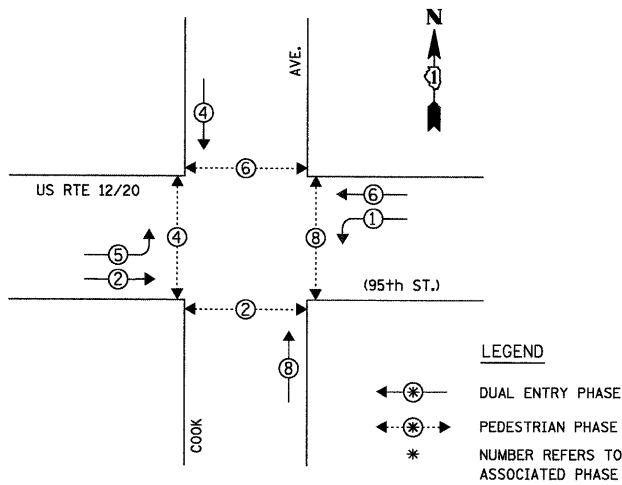


CONTROLLER SEQUENCE

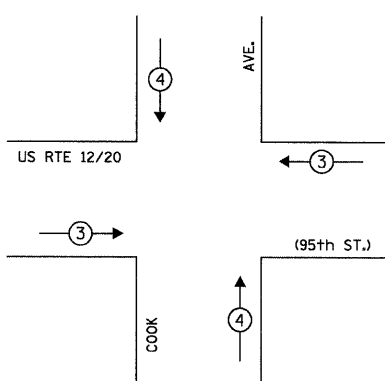


LEGEND

- ← ⊙ → DUAL ENTRY PHASE
- ← ⊙ → PEDESTRIAN PHASE
- * NUMBER REFERS TO ASSOCIATED PHASE

PHASE DESIGNATION DIAGRAM

EMERGENCY VEHICLE PREEMPTION SEQUENCE



PROPOSED EMERGENCY VEHICLE PREEMPTORS			
EMERGENCY VEHICLE PREEMPTOR	3	4	5
MOVEMENT	↔	↕	↗

PREEMPTOR 5 IS THE FIRE STATION PUSHBUTTON

NOTE:
THE FIRE STATION PREEMPTION SEQUENCE SHALL DISPLAY AN ALL RED INTERVAL PRIOR TO SERVICING THE FIRE LANE INTERVAL.

THE EMERGENCY VEHICLE PREEMPTION EQUIPMENT FOR THIS PROJECT SHALL BE "3M OPTICOM" TO MATCH THE EXISTING SYSTEM AND MUNICIPAL REQUIREMENTS

SCHEDULE OF QUANTITIES

ITEM	UNIT	TOTAL
MAINTENANCE OF EXISTING TRAFFIC SIGNAL INSTALLATION	EACH	1
ELECTRIC CABLE IN CONDUIT, SIGNAL NO. 14 3C	FOOT	255
LIGHT DETECTOR	EACH	2
LIGHT DETECTOR AMPLIFIER	EACH	1
MODIFY EXISTING CONTROLLER CABINET	EACH	1
ELECTRIC CABLE IN CONDUIT NO. 20 3/C, TWISTED, SHIELDED	FOOT	255
TRAFFIC CONTROL AND PROTECTION, STANDARD 701701	EACH	1

FOUNDATION (DEPTH)	FT. (m)	CABLE SLACK	FT. (m)	VERTICAL	FT. (m)
TYPE A - POST	4 (1.2)	HANDHOLE	6.5 (2.0)	ALL FOUNDATIONS	3.5 (1.0)
D - CONTROLLER	4 (1.2)	DOUBLE HANDHOLE	13 (4.0)	MAST ARM (L) POLE	20'+L-2'
E - M. ARM POLE		SIGNAL POST	2 (1.0)		(6m+L-0.6m)
		24" (600mm)	10 (3.0)	BRACKET MOUNTED	13 (4.0)
		30" (750mm)	15 (4.6)	PED. PUSHBUTTON	4 (1.2)
		36" (900mm)	15 (4.6)	ELECTRIC SERVICE	13.5 (4.1)
				SERVICE TO GROUND	13.5 (4.1)
				POST MOUNTED	6 (1.8)

I.D.O.T. TRAFFIC SIGNAL INSTALLATION ELECTRICAL SERVICE REQUIREMENTS				TOTAL WATTAGE
TYPE	NO. OF LAMPS	WATTAGE (INCAND.)	LED x % OPERATION	
SIGNAL (RED)	14	135	0.50	945.00
(YELLOW)	14	135	0.25	472.50
(GREEN)	14	135	0.25	472.50
ARROW	8	135	0.10	108.00
PED. SIGNAL	8	90	1.00	720.00
CONTROLLER	1	100	1.00	100.00
ILLUM. SIGN				

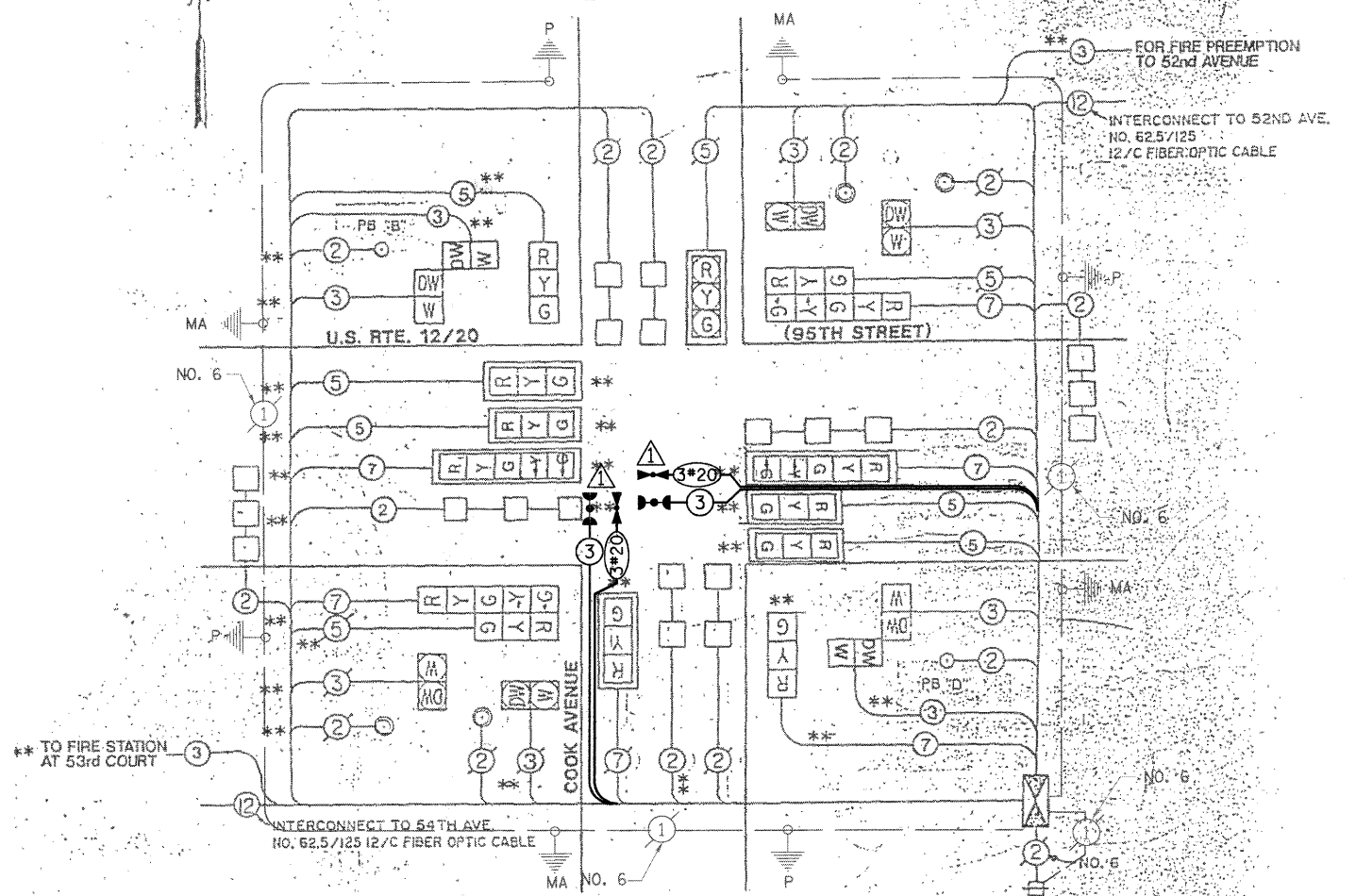
ENERGY COSTS TO: TOTAL = 2818.00

ILLINOIS DEPARTMENT OF TRANSPORTATION
DIVISION OF HIGHWAY/DISTRICT 1
201 WEST CENTER COURT/SCHAUMBURG, ILLINOIS 60196-1096

ENERGY SUPPLY: CONTACT: MILTON RAY
PHONE: (708) 235-2315
COMPANY: COMED

RESTORATION OF WORK AREA. RESTORATION OF THE TRAFFIC SIGNAL WORK AREA SHALL BE INCIDENTAL TO THE RELATED PAY ITEM SUCH AS FOUNDATION, CONDUIT, HANDHOLE, TRENCH AND BACKFILL, ETC., AND NO EXTRA COMPENSATION SHALL BE ALLOWED. ALL ROADWAY SURFACES SUCH AS SHOULDERS, MEDIANS, SIDEWALKS, PAVEMENT, ETC. SHALL BE REPLACED IN KIND. ALL DAMAGE TO MOWED LAWNS SHALL BE REPLACED WITH AN APPROVED SOD, AND ALL DAMAGE TO UNMOWED FIELDS SHALL BE SEEDED IN ACCORDANCE WITH STANDARD SPECIFICATIONS 252 AND 250 RESPECTIVELY.

CABLE PLAN



- CABLE PLAN LEGEND**
- 8" TRAFFIC SIGNAL SECTION
 - 12" TRAFFIC SIGNAL SECTION
 - 12" PEDESTRIAN SIGNAL SECTION
 - CONTROLLER CABINET
 - SERVICE INSTALLATION
 - VEHICLE DETECTOR, INDUCTION LOOP
 - PUSHBUTTON DETECTOR
 - EXISTING PUSHBUTTON DETECTOR DENOTES NUMBER OF CONDUCTORS (IEH)
 - EMERGENCY VEHICLE LIGHT DETECTOR CONFIRMATION BEACON
 - INDICATES EXISTING CABLE
 - SIGNAL FACE WITH BACKPLATE
 - "P" INDICATES PROGRAMMED
 - "L" INDICATES LOUVERED
 - EXISTING SIGNAL SECTION
 - MAGNETIC DETECTOR
 - OPTICAL DETECTOR

PUSHBUTTON B SHALL PLACE CALLS IN PHASES 4 AND 6
PUSHBUTTON D SHALL PLACE CALLS IN PHASES 2 AND 8

INSTALLATION OF EMERGENCY VEHICLE PREEMPTION

CHRISTOPHER B. BURKE ENGINEERING LTD.
9575 West Higgins Road, Suite 600
Rosemont, Illinois 60018
(847) 823-0800

REVISIONS	
NAME	DATE
KSM	5-23-94
CBEL	5/20/08

DEPARTMENT OF TRANSPORTATION
U.S. RTE 12/20 (95TH ST.)
CONTROLLER SEQUENCE IV
FIRE LANE SEQUENCE
CABLE PLAN
SCHEDULE OF QUANTITIES
U.S. 12/20 @ COOK AVE.

DATE 11/29/93
DRAWN BY CJS
CHECKED BY RAJ