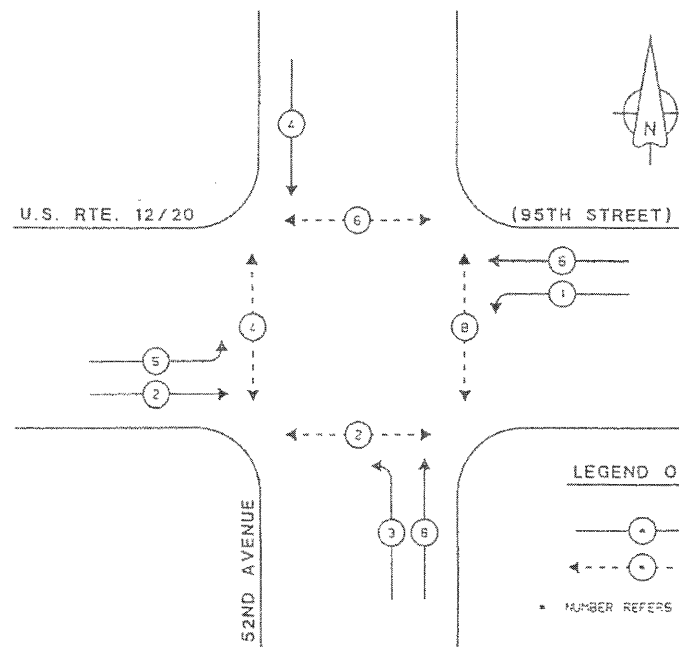


△ SCHEDULE OF QUANTITIES

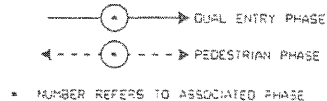
ITEM	UNIT	TOTAL
MAINTENANCE OF EXISTING TRAFFIC SIGNAL INSTALLATION	EACH	1
ELECTRIC CABLE IN CONDUIT, SIGNAL NO. 14 3C	FOOT	257
LIGHT DETECTOR	EACH	2
LIGHT DETECTOR AMPLIFIER	EACH	1
MODIFY EXISTING CONTROLLER CABINET	EACH	1
ELECTRIC CABLE IN CONDUIT NO. 20 3/C, TWISTED, SHIELDED	FOOT	257
TRAFFIC CONTROL AND PROTECTION, STANDARD 701701	EACH	1

CONTROLLER SEQUENCE



PHASE DESIGNATION DIAGRAM

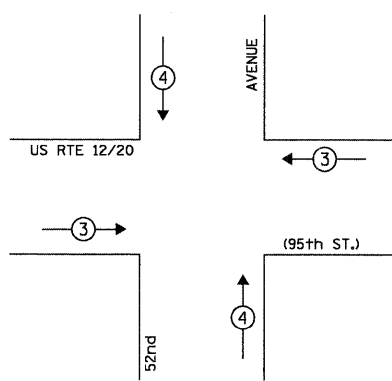
LEGEND OF SYMBOLS



△ THE EMERGENCY VEHICLE PREEMPTION EQUIPMENT FOR THIS PROJECT SHALL BE "3M OPTICOM" TO MATCH THE EXISTING SYSTEM AND MUNICIPAL REQUIREMENTS

△ RESTORATION OF WORK AREA. RESTORATION OF THE TRAFFIC SIGNAL WORK AREA SHALL BE INCIDENTAL TO THE RELATED PAY ITEM SUCH AS FOUNDATION, CONDUIT, HANDHOLE, TRENCH AND BACKFILL, ETC., AND NO EXTRA COMPENSATION SHALL BE ALLOWED. ALL ROADWAY SURFACES SUCH AS SHOULDERS, MEDIANS, SIDEWALKS, PAVEMENT, ETC. SHALL BE REPLACED IN KIND. ALL DAMAGE TO MOWED LAWNS SHALL BE REPLACED WITH AN APPROVED SOD, AND ALL DAMAGE TO UNMOWED FIELDS SHALL BE SEEDED IN ACCORDANCE WITH STANDARD SPECIFICATIONS 252 AND 250 RESPECTIVELY.

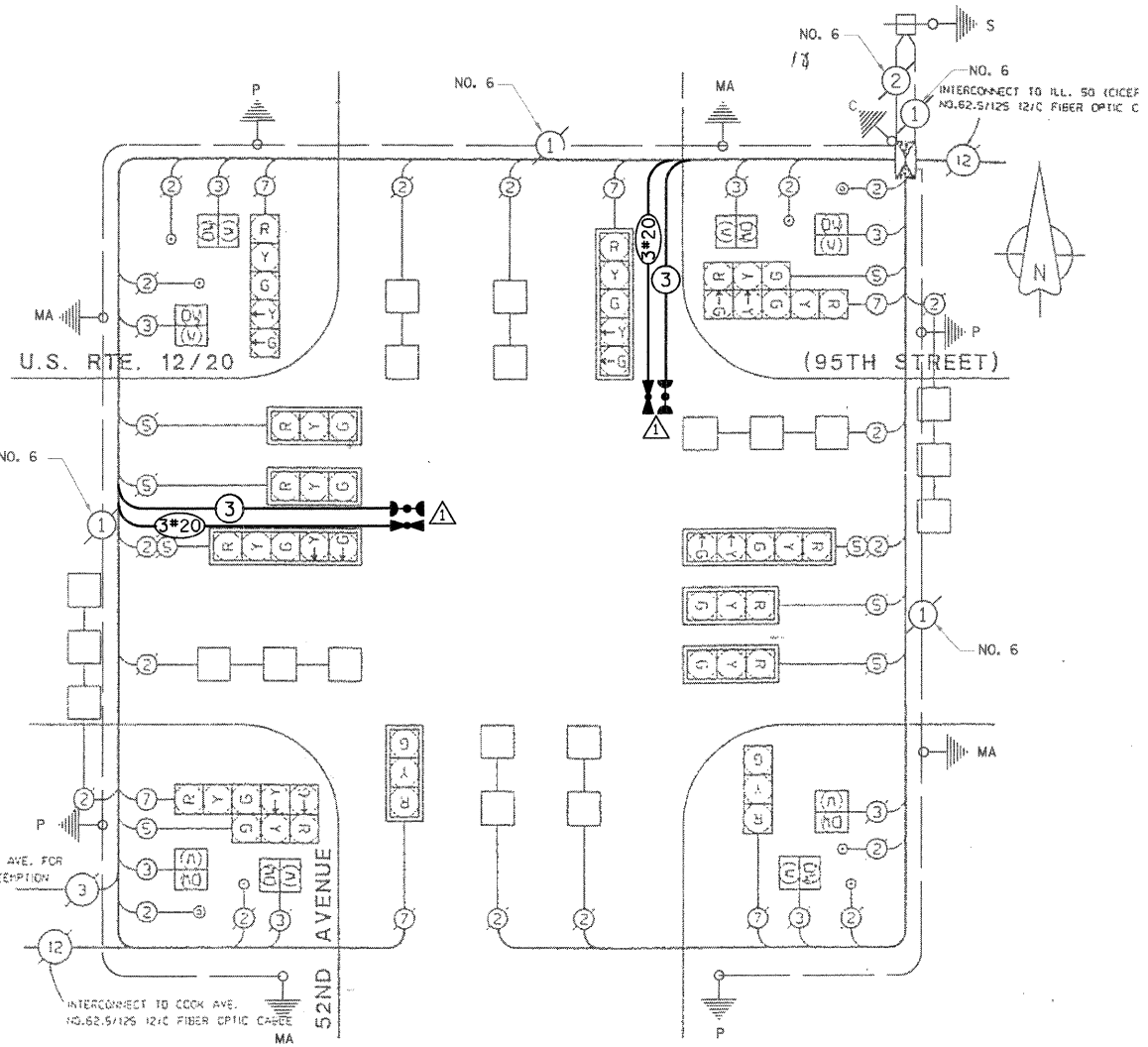
△ EMERGENCY VEHICLE PREEMPTION SEQUENCE



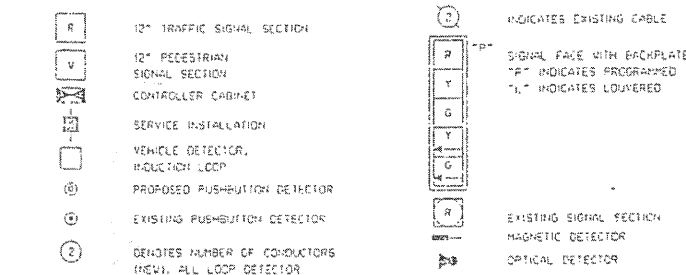
PROPOSED EMERGENCY VEHICLE PREEMPTORS			
EMERGENCY VEHICLE PREEMPTOR	3	4	5
MOVEMENT	←→	↑↓	↔

PREEMPTOR 5 IS THE FIRE STATION PUSHBUTTON

NOTE: THE FIRE PREEMPTION SEQUENCE SHALL DISPLAY AN ALL RED INTERVAL PRIOR TO SERVICING THE FIRE LANE INTERVAL.



CABLE PLAN LEGEND



I.D.O.T. TRAFFIC SIGNAL INSTALLATION ELECTRICAL SERVICE REQUIREMENTS					TOTAL WATTAGE
TYPE	NO. OF LAMPS	WATTAGE	LED	% OPERATION	
SIGNAL (RED)	14	135		0.50	945.00
(YELLOW)	14	135		0.25	472.50
(GREEN)	14	135		0.25	472.50
ARROW	12	135		0.10	162.00
PED. SIGNAL	8	90		1.00	720.00
CONTROLLER	1	100		1.00	100.00
ILLUM. SIGN		252			
FLASHER				0.50	
TOTAL =					2872.00

ENERGY COSTS TO: TOTAL = 2872.00  
**ILLINOIS DEPARTMENT OF TRANSPORTATION**  
 DIVISION OF HIGHWAY/DISTRICT 1  
 201 WEST CENTER COURT/SCHAUMBURG, ILLINOIS 60196-1096  
 ENERGY SUPPLY: CONTACT: MILTON RAY  
 PHONE: (708) 235-2315  
 COMPANY: COMED

FOUNDATION (DEPTH)	FT. (m)	CABLE SLACK	FT. (m)	VERTICAL	FT. (m)
TYPE A - POST	4 (1.2)	HANDHOLE	6.5 (2.0)	ALL FOUNDATIONS	3.5 (1.0)
D - CONTROLLER	4 (1.2)	DOUBLE HANDHOLE	13 (4.0)	MAST ARM (L) POLE	20'±L-2'
E - M. ARM POLE	2 (1.0)	SIGNAL POST	2 (1.0)	(6m±L-0.6m)	
24" (600mm)	10 (3.0)	CONTROLLER CAB.	1 (0.5)	BRACKET MOUNTED	13 (4.0)
30" (750mm)	15 (4.6)	FIBER OPTIC	13 (4.0)	PED. PUSHBUTTON	4 (1.2)
36" (900mm)	15 (4.6)	ELECTRIC SERVICE	1 (0.5)	ELECTRIC SERVICE	13.5 (4.1)
		GROUND CABLE	1 (0.5)	SERVICE TO GROUND	13.5 (4.1)
				POST MOUNTED	6 (1.8)

△ INSTALLATION OF EMERGENCY VEHICLE PREEMPTION  
**CHRISTOPHER B. BURKE ENGINEERING LTD.**  
 9515 West Higgins Road, Suite 600  
 Rosemont, Illinois 60018  
 (847) 823-0500

**EDWIN HANCOCK ENGINEERING COMPANY**  
 CONSULTING ENGINEERS  
 9933 ROOSEVELT ROAD WESTCHESTER, ILLINOIS 60154-2700  
 (708) 985-0300 ESTABLISHED 1911

95TH STREET PAVING AND DEGRATIVE LIGHTING PROJECT  
 M.F.T. SECTION NO. 97-00147-00-RS  
 VILLAGE OF OAK LAWN, ILLINOIS

TRAFFIC SIGNAL PLAN - 95TH STREET & 52ND AVENUE  
 SCALE: DRAWN BY: D.C. BOOK NO.: DATE: 8-13-97  
 9/05/97 D.C. DATE: 8-13-97  
 CBEL 3/20/08