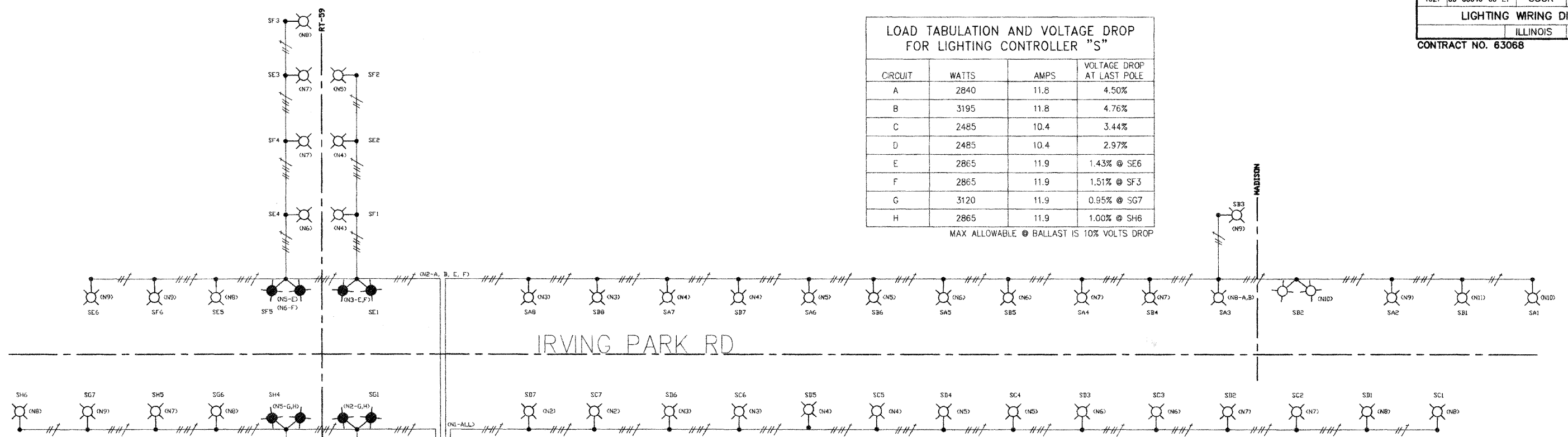


CONTRACT NO. 63068

**LOAD TABULATION AND VOLTAGE DROP FOR LIGHTING CONTROLLER "S"**

CIRCUIT	WATTS	AMPS	VOLTAGE DROP AT LAST POLE
A	2840	11.8	4.50%
B	3195	11.8	4.76%
C	2485	10.4	3.44%
D	2485	10.4	2.97%
E	2865	11.9	1.43% @ SE6
F	2865	11.9	1.51% @ SF3
G	3120	11.9	0.95% @ SG7
H	2865	11.9	1.00% @ SH6

MAX ALLOWABLE @ BALLAST IS 10% VOLTS DROP



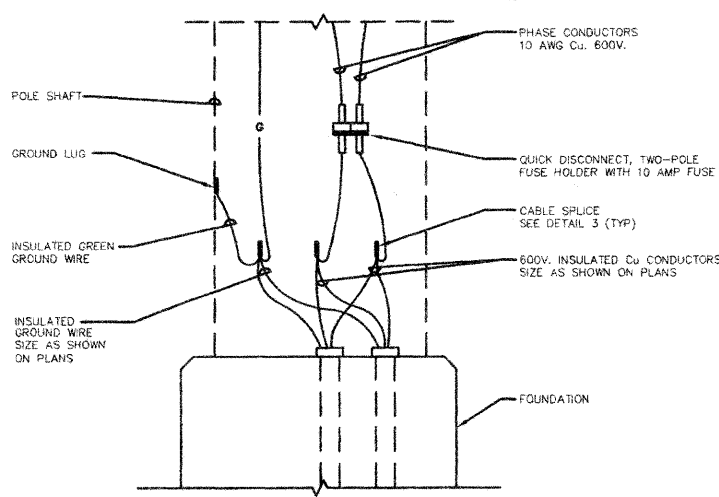
**LEGEND**

- SINGLE 250W H.P.S. LUMINAIRE, 240V, 1 PHASE, 2 WIRE
- DUAL 250W H.P.S. LUMINAIRE, 240V, 1 PHASE, 2 WIRE
- DUAL 400W H.P.S. LUMINAIRE, 240V, 1 PHASE, 2 WIRE
- 2# AWG & 1# AWG GROUND, 600V. (XLP-TYPE USE) ROUTED IN 2" RIGID GALVANIZED STEEL CONDUIT.
- 4# AWG & 1# AWG GROUND, 600V. (XLP-TYPE USE) ROUTED IN 2" RIGID GALVANIZED STEEL CONDUIT.
- PROPOSED LIGHTING CONTROLLER
- CIRCUITING DESIGNATION SCHEME
  - # - DENOTES POLE NO. ON GIVEN CIRCUIT
  - LETTER - DENOTES CIRCUIT DESIGNATION (A THROUGH H)
  - S - DENOTES CONTROLLER CABINET LABEL
- IDENTIFIES NODE POINT USED IN VOLTAGE DROP CALCS.

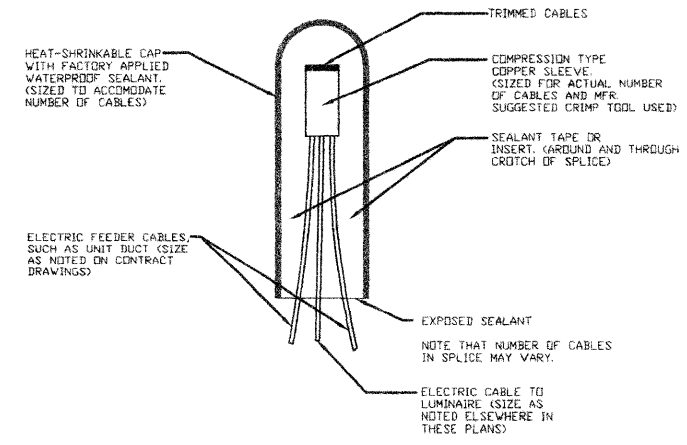
**1 WIRING DIAGRAM**  
NO SCALE

LIGHTING CONTROLLER "S" REFER TO DETAILS 1-3 ON SHEET 7.

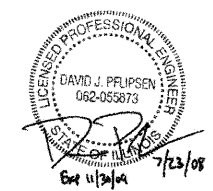
200A/2P, 240/120 VOLT, SINGLE PHASE SERVICE FROM EXISTING COMED SERVICE. INSTALLATION FOR INTERSECTION TRAFFIC SIGNALS. 3/32" ID 1/2" RIGID GALVANIZED STEEL C. BOND TO GROUNDING ELECTRODE WITH #2 AWG COPPER CONDUCTOR. REFER TO FOUNDATION TYPE 3 PER STATE STANDARD 078001 - CONCRETE FOUNDATION DETAILS FOR ELECTRODE LOCATION.



**2 POLE BASE WIRING DIAGRAM**  
NO SCALE



**3 SPLICING ELECTRIC CABLES BASIC MATERIALS AND METHODS**  
NO SCALE



**ENGINEERING CONSULTANTS**  
1721 W. BIEHL ROAD, SUITE 000  
NAPERVILLE, IL 60563  
630.527.2528 FAX: 630.527.2382  
www.jhw.com  
PROJECT: 054151

EXPERIENCE YOU CAN BUILD ON™

KJWW ENGINEERING RESERVES PROPRIETARY RIGHTS, INCLUDING COPYRIGHTS, TO THIS DRAWING AND THE DATA SHOWN THEREON. SAID DRAWING AND/OR DATA ARE THE EXCLUSIVE PROPERTY OF KJWW ENGINEERING AND SHALL NOT BE USED OR REPRODUCED FOR ANY OTHER PROJECT WITHOUT THE EXPRESS WRITTEN APPROVAL AND PARTICIPATION OF KJWW ENGINEERING. © 2005 KJWW, P.C.

REFERENCE SCALE IN INCHES  
0 1 2 3

PLANS PREPARED BY:  
**GEWALT HAMILTON ASSOCIATES, INC.**  
Consulting Engineers & Surveyors  
650 Forest Ridge Drive  
Verona Hills, IL 60061  
(847) 478-9700  
(847) 478-9701 Fax

REVISIONS	
NAME	DATE

ILLINOIS DEPARTMENT OF TRANSPORTATION  
**LIGHTING WIRING DIAGRAM**

IRVING PARK ROAD LIGHTING  
STREAMWOOD, ILLINOIS

SCALE: N.T.S.  
DATE: 6-16-08

DRAWN BY: DRS  
DESIGNED BY: AJP  
CHECKED BY: BLS