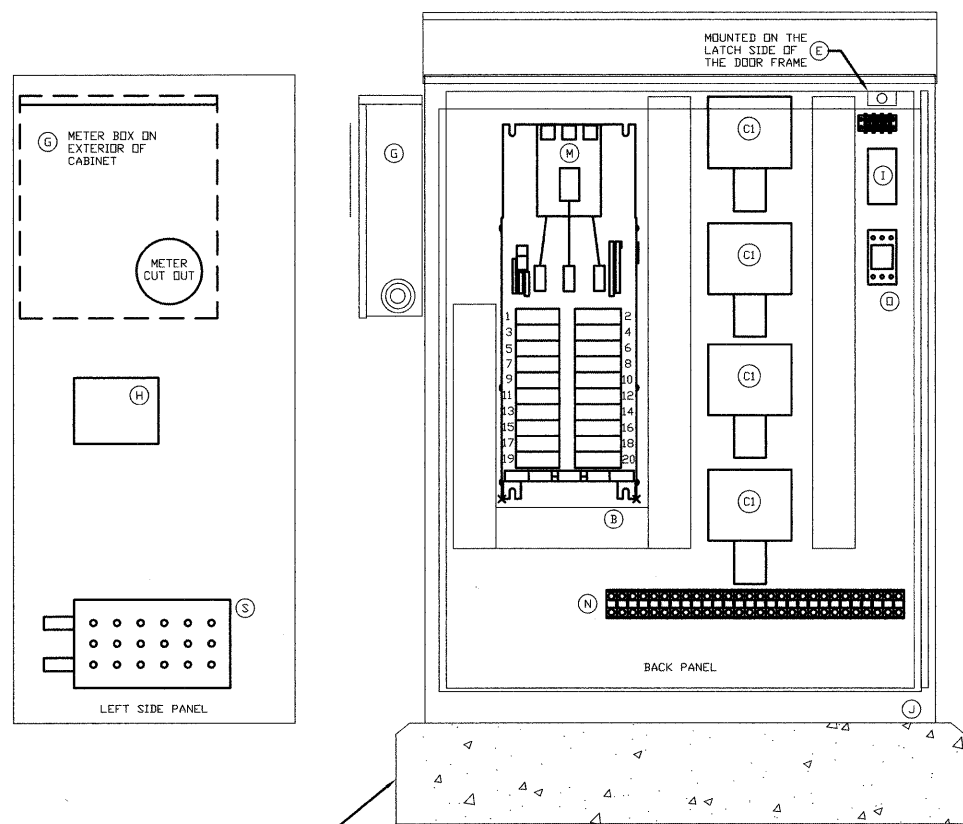


CONTRACT NO. 63068

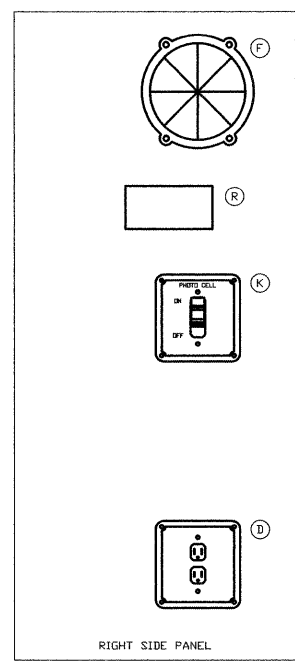


FOUNDATION SIZED TO FIT CABINET. REFER TO FOUNDATION TYPE D PER STATE STANDARD 878001 - CONCRETE FOUNDATION DETAILS.

1 LIGHTING CONTROL CABINET

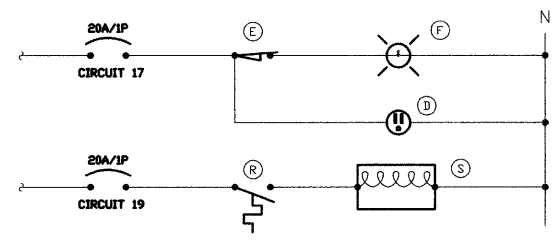
NO SCALE

NOTES:
1. LIGHTING CONTROLLER DOOR SHALL OPEN TO ALLOW MAINTAINER TO SEE/FACE ONCOMING TRAFFIC.

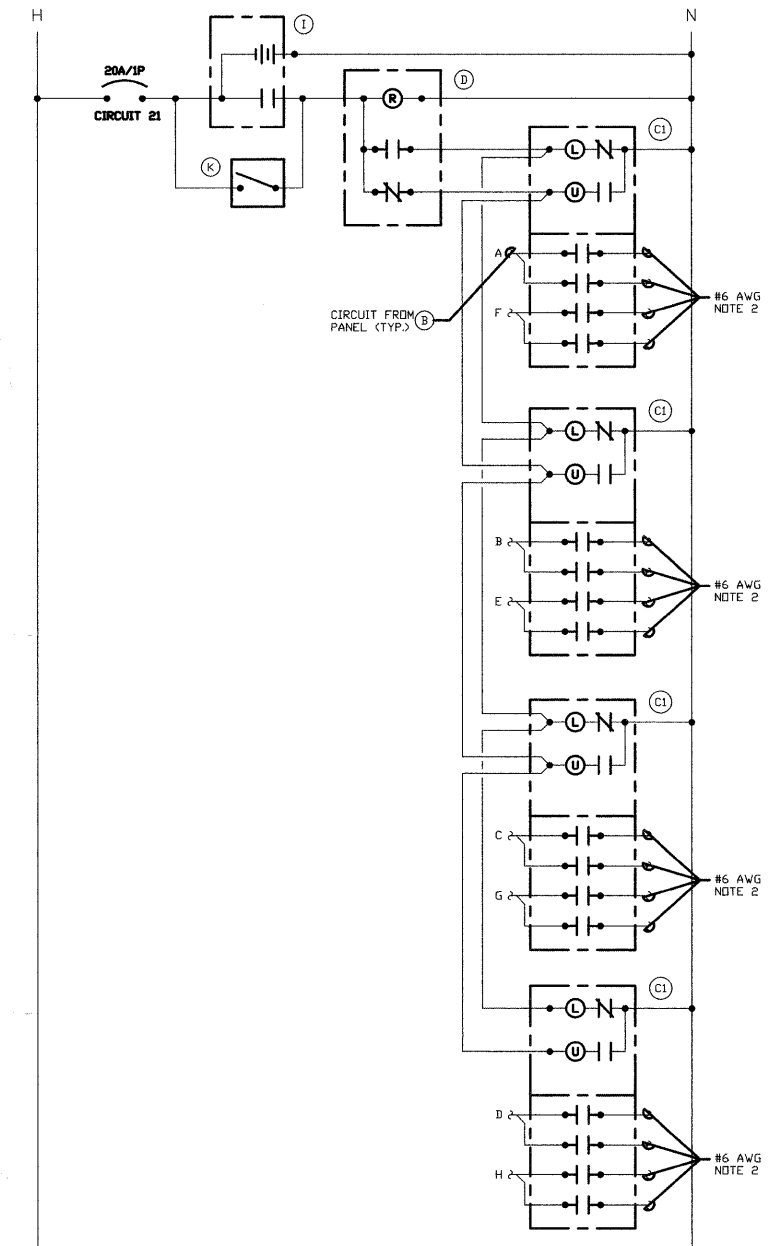


2 CABINET ELEMENTARY DIAGRAM

NO SCALE



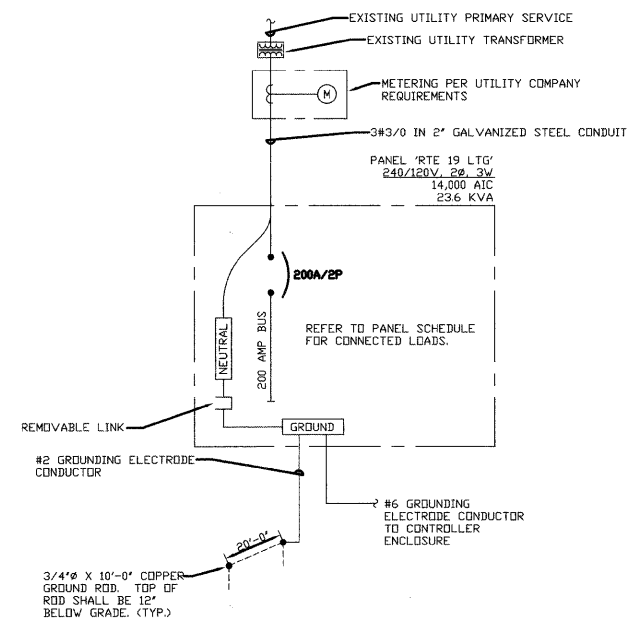
BILL OF MATERIALS FOR LIGHTING CONTROLLER "S"		
ITEM #	QUANTITY	DESCRIPTION
B	1	BRANCH CIRCUIT PANEL INTERIOR, 200A COPPER BUS, 240/120VOLT, MOLDED CASE THERMAL MAGNETIC CIRCUIT BREAKERS, BOLT ON TYPE, AIC RATING OF 14,000 AMPS AT 240 VOLTS, SQUARE D 1630-N00020L 100C4 OR APPROVED EQUAL.
C1	4	MECHANICAL CONTACTOR 4 POLE 30 AMP 120V COIL, SQUARE D 8903-LG40V02 OR APPROVED EQUAL.
D	1	GFI RECEPTACLE 120V 20A PREMIUM SPEC. GRADE, NEMA REFERENCE 5-20R IN WEATHER-PROOF BOX WITH FLAP-TYPE COVER, HUBBELL GF5362A, WP26 COVER, OR APPROVED EQUAL.
E	1	20A SPDT MICRO SWITCH (MOUNT WITH ACTUATOR TO SWITCH WHEN DOOR OPENED), 120 VOLT, 15 AMP CONTACTS, SQUARE D XCKL110, OR APPROVED EQUAL.
F	1	60 WATT LIGHT FIXTURE, VAPOR TIGHT WITH GLOBE AND GUARD AND MOUNTING BOX.
G	1	METER FITTING, 1 PHASE, 3 WIRE, 200 AMP.
H	1	SURGE ARRESTOR, BRACKET MOUNTED, 120/240 VOLT SERVICE, G.E. TRANQUELL SLISEBOOL OR APPROVED EQUAL.
I	1	PHOTOCELL, 120/277V, 1800 VA RATED, SINGLE POLE, SINGLE THROW CONTACT, WEATHERPROOF AND CORROSION PROOF ENCLOSURE, U.L. LISTED, TORK 2107 OR APPROVED EQUAL.
J	1	ENCLOSURE PAD MOUNTED, STAINLESS STEEL, N.E.M.A. 4X CONSTRUCTION WITH KEY LOCKING DOOR, KEY CYLINDER SHALL MATCH EXISTING VILLAGE LIGHTING CONTROLLER LOCKS, HOFFMAN, OR APPROVED EQUAL.
K	1	TOGGLE SWITCH, SPDT, 20 AMP, 240 VOLT, SPECIFICATION GRADE MOUNTED IN SURFACE BOX, HUBBELL HBL1221 OR APPROVED EQUAL.
M	1	MAIN CIRCUIT BREAKER, MOLDED CASE THERMAL MAGNETIC, SERVICE ENTRANCE DUTY RATED 240 VOLT, 200 AMP, 2 POLE, AIC RATING OF 14,000 AMPS AT 240 VOLTS, INTEGRAL TO BRANCH PANEL.
N	1	COPPER LOAD TERMINAL BLOCK FOR AWG#6 AND AWG#12.
O	1	FORM TYPE C RELAY, ELECTRICALLY HELD, ONE NORMALLY OPEN (N.O.) AND ONE NORMALLY CLOSED (N.C.) CONTACTS, 600V CONTINUOUS DUTY COIL, 30 AMP CONTACT RATING, SQUARE D CLASS 8501 OR APPROVED EQUAL.
R	1	THERMOSTAT, 40-80 DEGREE RANGE, CHROMALUX WR80 OR APPROVED EQUAL.
S	1	HEATER, 120 VOLT, 375 WATT, 40-80 DEGREE THERMOSTAT, CHROMALUX 276-10 OR APPROVED EQUAL.



3 LIGHTING CONTROL ELEMENTARY DIAGRAM

NO SCALE

NOTES:
1. ALL CABINET INTERIOR WIRING SHALL BE STRANDED COPPER #12 AWG THWN UNLESS NOTED OTHERWISE.
2. ROUTE TO STREET LIGHTING LUMINAIRES VIA TERMINAL BLOCK.



4 ONE LINE DIAGRAM

NO SCALE

TYPE: BOLT-ON MOUNTING SURFACE - INTERIOR ONLY		PANEL NAME: RTE 19 LTG		CONNECTED 23.6 KVA					
FED FROM UTILITY		SOLID NEUTRAL GROUND BUS		MAIN: 200A/2P CB (H)					
AIC RATING: 14,000				VOLTS: 240/120					
				PHASE: 1					
				WIRE: 3					
CKT NO.	LOAD DESCRIPTION	WIRE SIZE	LOAD KVA	BREAKER AMP	BREAKER P	LOAD KVA	WIRE SIZE	LOAD DESCRIPTION	CKT NO.
1	CIRCUIT A 8-250W	6	2.6	20	2	2.6	6	CIRCUIT E 2-400W, 5-250W	2
3									4
5	CIRCUIT B 9-250W	6	3.2	20	2	2.9	6	CIRCUIT F 2-400W, 5-250W	6
7									8
9	CIRCUIT C 7-250W	6	2.5	20	2	2.9	6	CIRCUIT G 2-400W, 5-250W	10
11									12
13	CIRCUIT D 7-250W	6	2.5	20	2	3.1	6	CIRCUIT H 2-400W, 5-250W	14
15									16
17	LIGHT, RECEPT	12	0.3	20	1	20	2	SPARE	18
19	HEATER	12	0.4	20	1				20
21	LIGHTING CONTROL, PHOTOCCELL	12	0.1	20	1	20	2	SPARE	22
23	SPARE			20	1				24

PLANS PREPARED BY:
GEWALT HAMILTON ASSOCIATES, INC.
Consulting Engineers & Surveyors
850 Forest Ridge Drive
Vernon Hills, IL 60061
(847) 478-9700
(847) 478-9701 Fax

REVISIONS	
NAME	DATE

KJV ENGINEERING CONSULTANTS
1771 W. DIEHL ROAD, SUITE 300
WAPERVILLE, IL 60563
630.527.2300 FAX 630.527.2321
www.kjv.com PROJECT #04151
Experience you can build on.

ILLINOIS DEPARTMENT OF TRANSPORTATION
LIGHTING CONTROL CABINET
IRVING PARK ROAD LIGHTING
STREAMWOOD, ILLINOIS

SCALE: N.T.S.
DATE: 6-16-08
DRAWN BY: DRS
DESIGNED BY: AJP
CHECKED BY: BLS