

STATE OF ILLINOIS
DEPARTMENT OF TRANSPORTATION
DIVISION OF HIGHWAYS
**PLANS FOR PROPOSED
FEDERAL AID HIGHWAY**

59TH STREET
(ARCHER ROAD to 74th AVENUE)
DOUGLAS AVENUE
(CENTER AVENUE to HUNT AVENUE)
SECTION NO. 08-00062-00-RS
LAPP RESURFACING
FEDERAL PROJECT HPP-3464(002)
VILLAGE OF SUMMIT
COOK COUNTY
JOB NO. C-91-419-08

INDEX OF SHEETS

- COVER SHEET, INDEX OF SHEETS, LOCATION MAP, INDEX OF STATE STANDARDS
- GENERAL NOTES AND SUMMARY OF QUANTITIES
- TYPICAL CROSS SECTIONS, BITUMINOUS MIXTURES REQUIREMENT
- PLAN: 59TH ST. - ARCHER RD. to 74th AVE.
DOUGLAS AVE. - CENTER AVE. to HUNT AVE.
- PLAN: PAVEMENT MARKING
- DISTRICT ONE TYPICAL PAVEMENT MARKINGS
- TRAFFIC CONTROL AND PROTECTION FOR SIDEROADS, INTERSECTIONS, AND DRIVEWAYS
- CURB OR CURB AND GUTTER REMOVAL AND REPLACEMENT
- FRAMES AND LIDS ADJUSTMENTS WITH MILLING
- BUTT JOINT AND HOT-MIX ASPHALT TAPER DETAILS

STATE STANDARDS

- 000001-05 STANDARDS SYMBOLS, ABBREVIATIONS, AND PATTERNS
442201-03 CLASS C AND D PATCHES
604001-02 FRAME & LIDS, TYPE 1
606001-03 CONCRETE CURB AND COMBINATION CONCRETE CURB & GUTTER
701501-04 URBAN LANE CLOSURE, 2 L, 2 W UNDIVIDED
701901 TRAFFIC CONTROL DEVICES
780001-01 TYPICAL PAVEMENT MARKINGS

LENGTH OF PROJECT

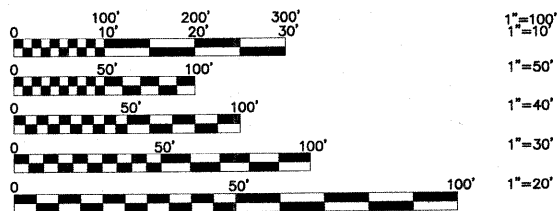
59TH STREET

GROSS LENGTH = 1455 FT. (0.2756 miles)
NET LENGTH = 1455 FT. (0.2756 miles)

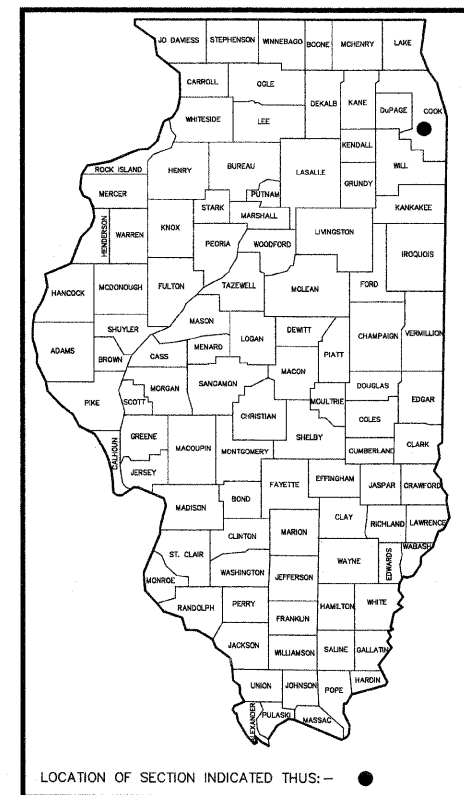
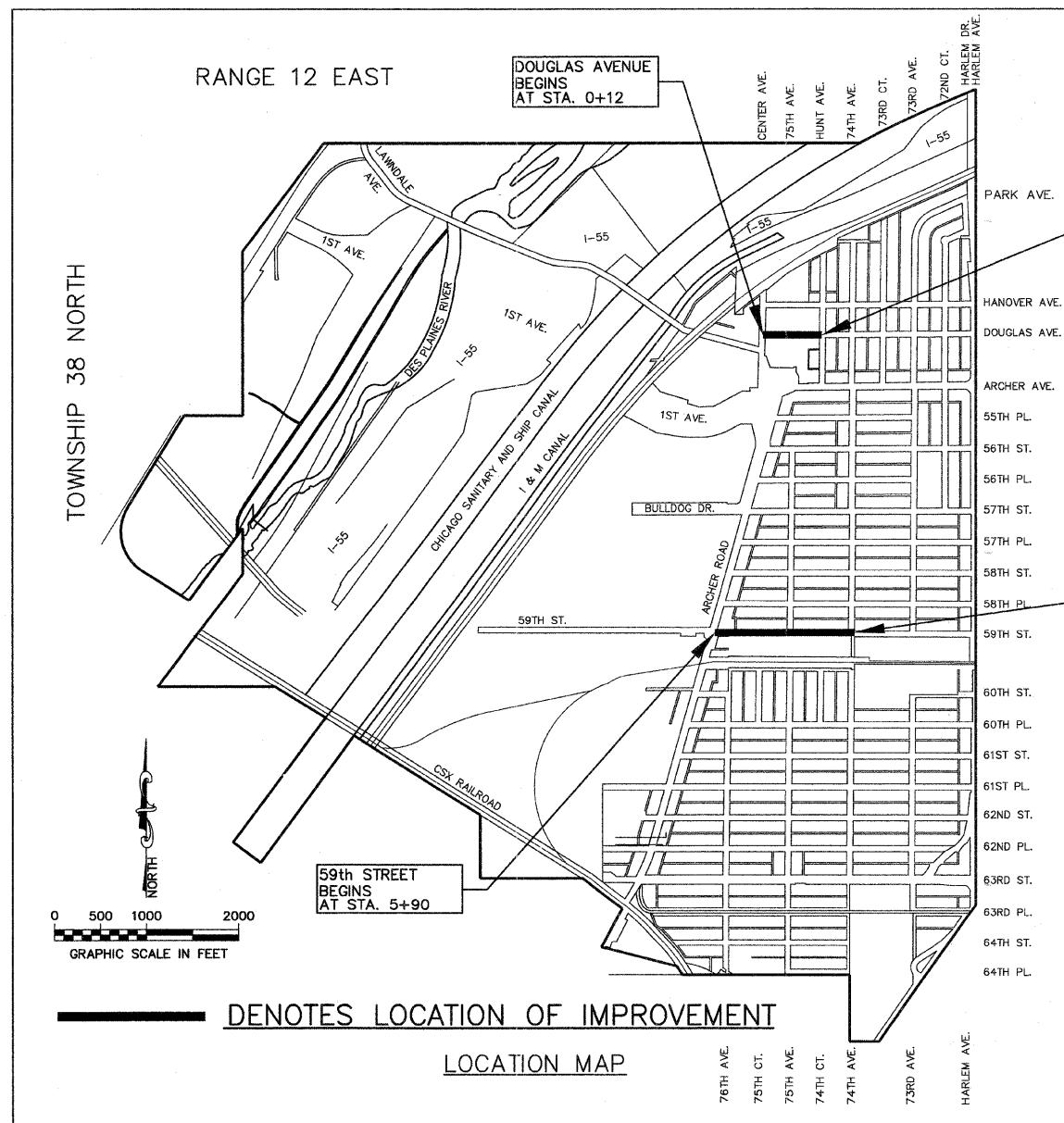
DOUGLAS AVENUE

GROSS LENGTH = 604 FT. (0.1144 miles)
NET LENGTH = 604 FT. (0.1144 miles)

TOTAL GROSS LENGTH = 2059 FT. (0.3900 miles)
TOTAL NET LENGTH = 2059 FT. (0.3900 miles)



FULL SIZE PLANS HAVE BEEN PREPARED USING STANDARD ENGINEERING SCALES. REDUCED SIZED PLANS WILL NOT CONFORM TO STANDARD SCALES. IN MAKING MEASUREMENTS ON REDUCED PLANS, THE ABOVE SCALES MAY BE USED.



STATE OF ILLINOIS
DEPARTMENT OF TRANSPORTATION
DIVISION OF HIGHWAYS

APPROVED _____ JULY 22 _____ 20_08

VILLAGE PRESIDENT _____

PASSED July 23, 2008

DISTRICT #1 ENGINEER OF LOCAL ROADS & STREETS

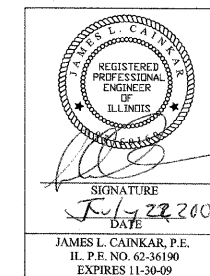
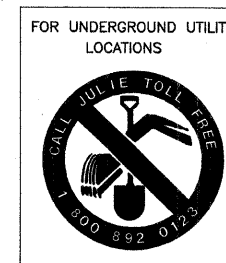
RELEASING FOR BID
BASED ON LIMITED
REVIEW July 23, 2008

DEPUTY DIRECTOR OF HIGHWAYS, REGION #1 ENGINEER

PROJECT LOCATED IN THE
VILLAGE OF SUMMIT

TOWNSHIP 38 NORTH
RANGE 12 EAST
LYONS TOWNSHIP

SEE PAGE 3 FOR
DESIGN DETAILS



TRAFFIC DATA:
ADT (2007): 400
POSTED SPEED LIMIT = 25 MPH
DESIGN SPEED LIMIT = 25 MPH

PRINTED BY THE AUTHORITY OF THE
STATE OF ILLINOIS

FNA JOB # 07371

CONTRACT NO. 63071

REVISIONS			
NO.	BY	DATE	DESCRIPTION
1	JLC	6-11-08	UPDATE PER I.D.O.T
2	JLC	7-16-08	UPDATE PER I.D.O.T
3	JLC	7-21-08	UPDATE PER I.D.O.T

FIELD ENGINEER: MARILIN SOLOMON (847)705-4407
CONSULTANT: FRANK NOVOTNY AND ASSOCIATES, INC. (630)887-8640