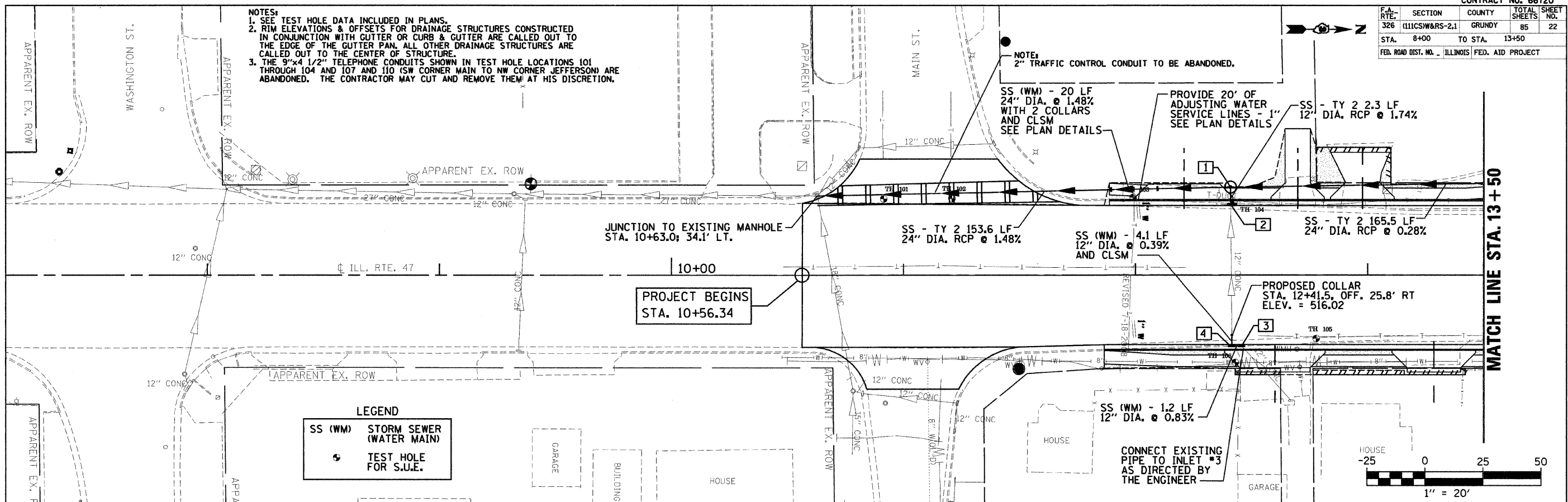


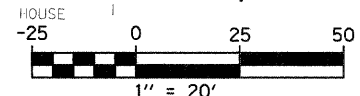
F.A. RTE.	SECTION	COUNTY	TOTAL SHEETS	SHEET NO.
326	(111CS)W&RS-2.1	GRUNDY	85	22
STA. 8+00	TO STA. 13+50			
FED. ROAD DIST. NO. - ILLINOIS FED. AID PROJECT				

**NOTES:**  
 1. SEE TEST HOLE DATA INCLUDED IN PLANS.  
 2. RIM ELEVATIONS & OFFSETS FOR DRAINAGE STRUCTURES CONSTRUCTED IN CONJUNCTION WITH GUTTER OR CURB & GUTTER ARE CALLED OUT TO THE EDGE OF THE GUTTER PAN. ALL OTHER DRAINAGE STRUCTURES ARE CALLED OUT TO THE CENTER OF STRUCTURE.  
 3. THE 9"x4 1/2" TELEPHONE CONDUITS SHOWN IN TEST HOLE LOCATIONS 101 THROUGH 104 AND 107 AND 110 (SW CORNER MAIN TO NW CORNER JEFFERSON) ARE ABANDONED. THE CONTRACTOR MAY CUT AND REMOVE THEM AT HIS DISCRETION.

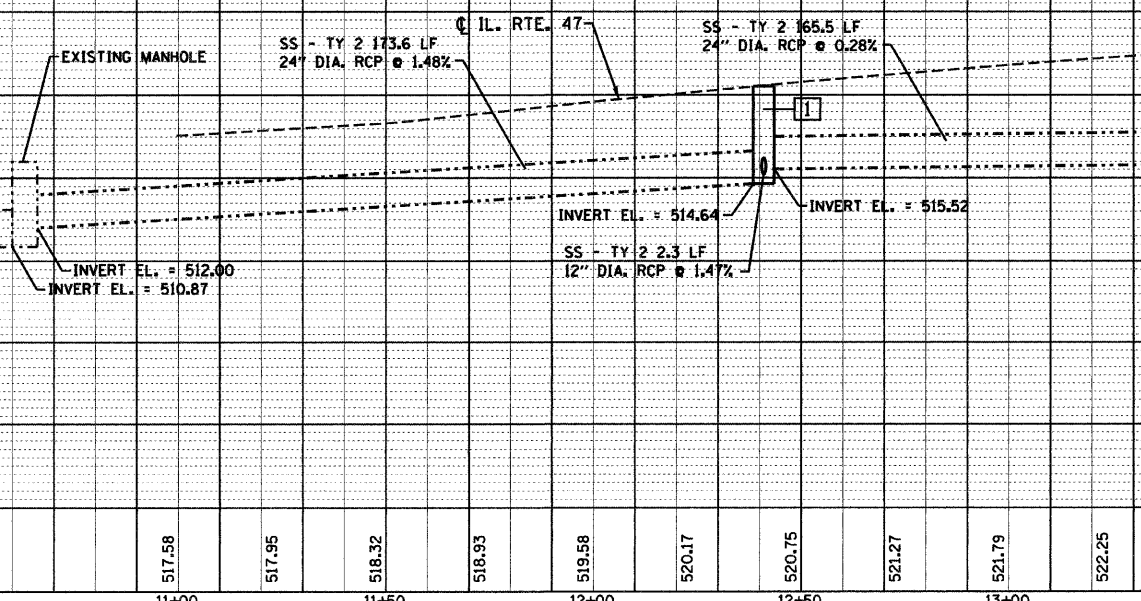
**NOTES:**  
 2" TRAFFIC CONTROL CONDUIT TO BE ABANDONED.



**LEGEND**  
 SS (WM) STORM SEWER (WATER MAIN)  
 TEST HOLE FOR S.U.E.



STRUCT NUMBER	STATION	OFFSET	RIM ELEV.	INVERT ELEV.	STRUCTURE TYPE	
535	1	12+41.0	37.9' LT.	520.50	515.52 N; 514.64 S; 515.20 E	MANHOLE TYPE A 5' DIA. W/ TYPE 1 FRAME CL
	2	12+41.0	30.1' LT.	520.21	515.80 E; 515.24 W	INLET TYPE B W/ TYPE 3 FRAME & GRATE
	3	12+45.7	29.9' RT.	520.32	516.06 S; 516.07 NE	INLET TYPE B W/ TYPE 20 FRAME & GRATE
	4	12+41.5	29.9' RT.	520.23	516.04 W; 516.05 N	INLET TYPE B W/ TYPE 20 FRAME & GRATE
530						
525						
520						
515						
510						
505						
500						
495						



DATE - TIME: 01:00:00 10/10/2008