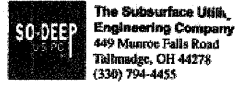


F.A.P. SECTION COUNTY TOTAL SHEETS SHEET NO.
326 (111CS) W&RS-21 GRUNDY 85 85-A
STA. TO STA.
FED. ROAD DIST. NO. ILLINOIS FED. AID PROJECT



So-Deep Test Hole Certification Form

So-Deep, Corporate Office
8397 Euclid Avenue
Manassas Park, VA 20111
(703)361-6005

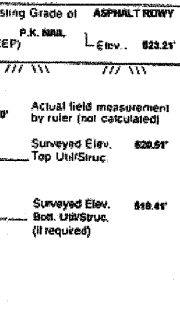
City, County, State CITY OF MORRIS, IL
Gen. Loc. NW CORNER DIVISION ST. & JEFFERSON ST.
Recorded Size/Type of Utility 18" DIA. 4" DEPT. (AT&T) F.O. TELE. DUCT
Foreman/Truck/By J. CLINE / 219 / P. REYNOLDS

Control # DLD433
Test Hole # 1
Plan Scale 1"=30"
Sheet # 2
Proposed STORM X-ING
Date MAY 6, 2008

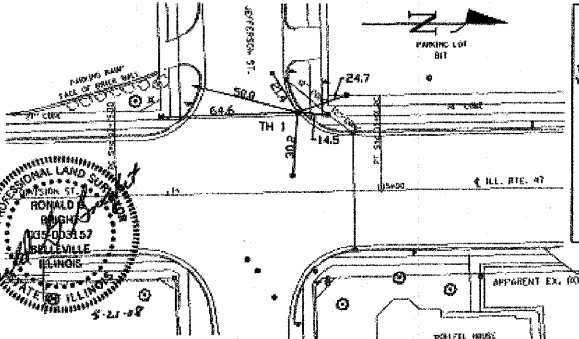
B.M. 1 Elev. = 524.81' Description: (BM #102) TOP OF RR SPIKE FOUND, IN L.P., 37'± LT OF CL STA 13+87.2, ILL. RTE. 47
B.M. 2 Elev. = 528.18' Description: (BM #103) TOP OF NAIL FOUND, IN L.P., 43'± LT OF CL STA 18+00.2, ILL. RTE. 47
Benchmarks check BY 0.01'
Elevations are referenced to B.M.#1

SO-DEEP will attempt to use the B.M.#s most applicable to your design. If however, B.M. differ by more than .02', existing differences could cause design conflicts.

Recorded Size/Type of Utility WAS FOUND
There WERE NOT additional utilities in the test hole.
The utility WAS in good condition.
Paving Thickness and type 4 1/2" ASPHALT
Color of ribbon installed ORANGE
Soil Type MOIST SAND
Field Condition LIGHT ROAD TRAFFIC
T.H. tied to P.K. NAIL
1.1/4" PRECAST CEMENT (AT&T) F.O. TELE. DUCT
Size/Type of Utility 18" DIA. 4" DEPT. (AT&T) F.O. TELE. DUCT
Portion of pipe exposed for O.D. measurement
NONE
Remarks: NOTE: R.R. TOP #2 WAS TAKEN ON TOP OF A 2 1/2" X 3" WOOD BOARD LYING ON TOP OF THE PRECAST CEMENT TELE. DUCT.

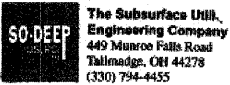


PREPARED WITHOUT AT&T RECORDS. WE ACCEPT NO LIABILITY FOR FACILITIES OTHER THAN THOSE DEPICTED ON THIS CERTIFICATION FORM.



- R/W = Right of Way
- NTS = Not to Scale
- PCC = Precast Concrete
- CONC. = Concrete
- CONC. = Concrete
- O.D. = Outside Diameter
- CL = Cast Iron
- D.I. = Ductile Iron
- R/PVC = Rough Pvc Concrete
- CL = Concrete
- T.C. = Trench Cable
- PLAS. = Plastic
- BL = Base Line
- ELEC. = Electric
- TELE. = Telephone
- T.H. = Test Hole
- SW = Sewer
- DW = Downspout
- BM = Benchmark
- C.B. = Catch Basin
- GV = Gas Valve
- Sewer Manhole
- Test Hole
- Fire Hydrant
- Pole
- Electric Manhole
- T.S. = Traverse Station
- Valve
- Water Meter
- Telephone Manhole
- Telephone Pedestal

Performing out-of-sight work...with vision!SM
Note: To Eliminate mistakes and check this work, So-Deep suggests you walk and plot all dimensions onto the plans and review all elevations carefully. So-Deep is responsible only for information shown on our forms.



So-Deep Test Hole Certification Form

So-Deep, Corporate Office
8397 Euclid Avenue
Manassas Park, VA 20111
(703)361-6005

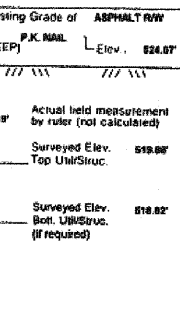
City, County, State CITY OF MORRIS, IL
Gen. Loc. DIVISION ST., JUST N OF JEFFERSON ST.
Recorded Size/Type of Utility 8" DIA. 4" DEPT. (AT&T) F.O. TELE. DUCT
Foreman/Truck/By J. CLINE / 219 / P. REYNOLDS

Control # DLD433
Test Hole # 2
Plan Scale 1"=30"
Sheet # 2
Proposed STORM X-ING
Date MAY 6, 2008

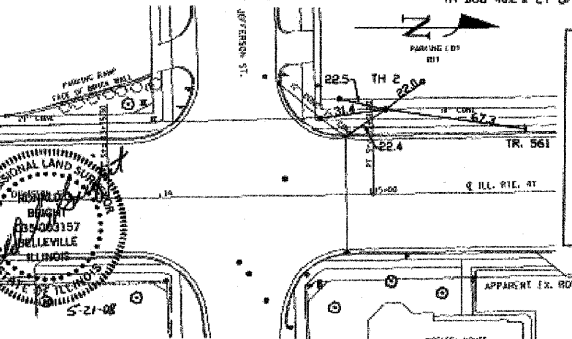
B.M. 1 Elev. = 524.81' Description: (BM #102) TOP OF RR SPIKE FOUND, IN L.P., 37'± LT OF CL STA 13+87.2, ILL. RTE. 47
B.M. 2 Elev. = 528.18' Description: (BM #103) TOP OF NAIL FOUND, IN L.P., 43'± LT OF CL STA 18+00.2, ILL. RTE. 47
Benchmarks check BY 0.01'
Elevations are referenced to B.M.#1

SO-DEEP will attempt to use the B.M.#s most applicable to your design. If however, B.M. differ by more than .02', existing differences could cause design conflicts.

Recorded Size/Type of Utility WAS FOUND
There WERE NOT additional utilities in the test hole.
The utility WAS in good condition.
Paving Thickness and type 3 1/2" ASPHALT
Color of ribbon installed ORANGE
Soil Type MOIST SAND
Field Condition ASPHALT R/W
T.H. tied to P.K. NAIL
1.1/4" PRECAST CEMENT (AT&T) F.O. TELE. CONDUITS
Size/Type of Utility 8" DIA. 4" DEPT. (AT&T) F.O. TELE. CONDUITS
Portion of pipe exposed for O.D. measurement
FULL
Remarks: NONE



PREPARED WITHOUT AT&T RECORDS. WE ACCEPT NO LIABILITY FOR FACILITIES OTHER THAN THOSE DEPICTED ON THIS CERTIFICATION FORM.



- R/W = Right of Way
- NTS = Not to Scale
- PCC = Precast Concrete
- CONC. = Concrete
- CONC. = Concrete
- O.D. = Outside Diameter
- CL = Cast Iron
- D.I. = Ductile Iron
- R/PVC = Rough Pvc Concrete
- CL = Concrete
- T.C. = Trench Cable
- PLAS. = Plastic
- BL = Base Line
- ELEC. = Electric
- TELE. = Telephone
- T.H. = Test Hole
- SW = Sewer
- DW = Downspout
- BM = Benchmark
- C.B. = Catch Basin
- GV = Gas Valve
- Sewer Manhole
- Test Hole
- Fire Hydrant
- Pole
- Electric Manhole
- T.S. = Traverse Station
- Valve
- Water Meter
- Telephone Manhole
- Telephone Pedestal

Performing out-of-sight work...with vision!SM
Note: To Eliminate mistakes and check this work, So-Deep suggests you walk and plot all dimensions onto the plans and review all elevations carefully. So-Deep is responsible only for information shown on our forms.



So-Deep Test Hole Certification Form

So-Deep, Corporate Office
8397 Euclid Avenue
Manassas Park, VA 20111
(703)361-6005

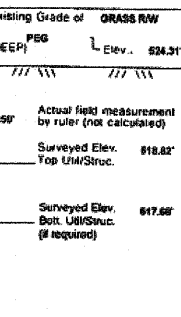
City, County, State CITY OF MORRIS, IL
Gen. Loc. DIVISION ST., JUST N OF JEFFERSON ST.
Recorded Size/Type of Utility 18" DIA. 4" DEPT. (AT&T) F.O. TELE. DUCT
Foreman/Truck/By J. CLINE / 219 / P. REYNOLDS

Control # DLD433
Test Hole # 3
Plan Scale 1"=30"
Sheet # 2
Proposed STORM X-ING
Date MAY 6, 2008

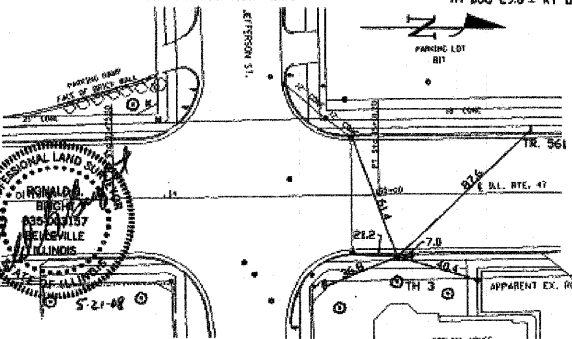
B.M. 1 Elev. = 524.81' Description: (BM #102) TOP OF RR SPIKE FOUND, IN L.P., 37'± LT OF CL STA 13+87.2, ILL. RTE. 47
B.M. 2 Elev. = 528.18' Description: (BM #103) TOP OF NAIL FOUND, IN L.P., 43'± LT OF CL STA 18+00.2, ILL. RTE. 47
Benchmarks check BY 0.01'
Elevations are referenced to B.M.#1

SO-DEEP will attempt to use the B.M.#s most applicable to your design. If however, B.M. differ by more than .02', existing differences could cause design conflicts.

Recorded Size/Type of Utility WAS FOUND
There WERE NOT additional utilities in the test hole.
The utility WAS in good condition.
Paving Thickness and type NO PAVING
Color of ribbon installed ORANGE
Soil Type MOIST SAND
Field Condition GRASS R/W
T.H. tied to PEG
1.1/4" PRECAST CEMENT (AT&T) F.O. TELE. DUCT
Size/Type of Utility 18" DIA. 4" DEPT. (AT&T) F.O. TELE. DUCT
Portion of pipe exposed for O.D. measurement
NONE
Remarks: NONE



PREPARED WITHOUT AT&T RECORDS. WE ACCEPT NO LIABILITY FOR FACILITIES OTHER THAN THOSE DEPICTED ON THIS CERTIFICATION FORM.



- R/W = Right of Way
- NTS = Not to Scale
- PCC = Precast Concrete
- CONC. = Concrete
- CONC. = Concrete
- O.D. = Outside Diameter
- CL = Cast Iron
- D.I. = Ductile Iron
- R/PVC = Rough Pvc Concrete
- CL = Concrete
- T.C. = Trench Cable
- PLAS. = Plastic
- BL = Base Line
- ELEC. = Electric
- TELE. = Telephone
- T.H. = Test Hole
- SW = Sewer
- DW = Downspout
- BM = Benchmark
- C.B. = Catch Basin
- GV = Gas Valve
- Sewer Manhole
- Test Hole
- Fire Hydrant
- Pole
- Electric Manhole
- T.S. = Traverse Station
- Valve
- Water Meter
- Telephone Manhole
- Telephone Pedestal

Performing out-of-sight work...with vision!SM
Note: To Eliminate mistakes and check this work, So-Deep suggests you walk and plot all dimensions onto the plans and review all elevations carefully. So-Deep is responsible only for information shown on our forms.

REVISIONS	
NAME	DATE

ILLINOIS DEPARTMENT OF TRANSPORTATION
SUBSURFACE UTILITY
ENGINEERING
TEST HOLES
SCALE: NONE
DATE: 09/2007
DRAWN BY: KHM
CHECKED BY: FML