

F.A.P. RTE.	SECTION	COUNTY	TOTAL SHEETS	SHEET NO.
326	(111CS) W&RS-21	GRUNDY	85	85-K
STA. TO STA.		FED. ROAD DIST. NO. ILLINOIS FED. AID PROJECT		

SO-DEEP
The Subsurface Utility Engineering Company
449 Munroe Falls Road
Tallmadge, OH 44278
(330) 794-4455

So-Deep Test Hole Certification Form
© So-Deep 1988, 1991

So-Deep, Corporate Office
8397 Euclid Avenue
Manassas Park, VA 20111
(703)361-6005

City, County, State CITY OF MORRIS, IL
Gen. Loc. SW CORNER JACKSON ST & DIVISION ST
Recorded Size/Material/Type 8-WAY LINK, TYPE (AT&T) TELE DUCT
Foreman/Truck/Form By J. CLINE / 219 / P. REYNOLDS

Condition of paving prior to work ASPHALT PARKING LOT

B.M. 1 Elev. = 528.87
is GIVEN

Description: (BM #102) TOP OF RR SPIKE FOUND IN L.P., 37'± LT OF STA. 13+52.3, DIVISION ST.

B.M. 2 Elev. = 528.59
is GIVEN

Description: (BM #104) CHIS "X" FOUND NE CAP BOLT OF P.H., 40'± RT OF STA. 21+33.2, DIVISION ST.

Benchmarks check BY 6/87
Elevations are referenced to B.M.#1

SO-DEEP will attempt to use the BMM most applicable to your design. If however, BMM differ by more than .05, resulting differences could cause design conflicts.

Recorded Size/Type of utility WAS FOUND

There WERE NOT additional utilities in the test hole

The utility WAS in good condition

Paving Thickness and type 3" ASPHALT

Color of ribbon installed ORANGE

Soil Type MORTY SAND

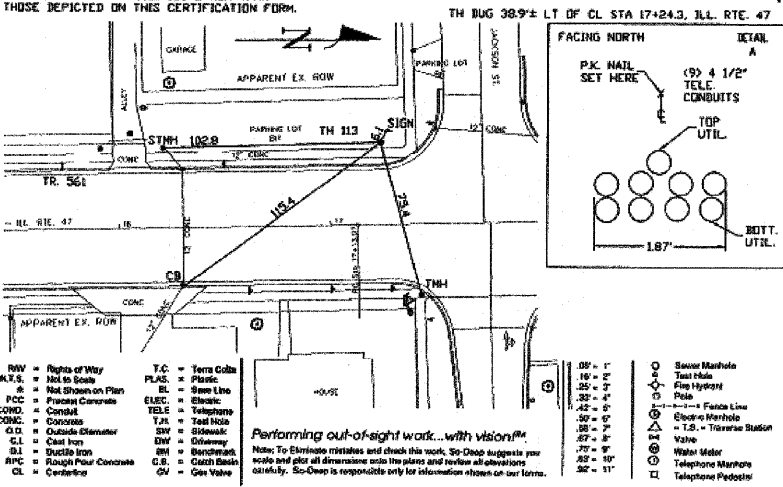
Field Condition ASPHALT P-LOT

T.H. tied to P.K. NAIL

(9) 4 1/2" PLA. (AT&T) TELE CONDUITS 0.6W 1" M"
Size/Material/Type
Portion of pipe exposed for C.D. measurement:
N/A

Remarks: TELE DUCT CONTAINS FIBER OPTICS AT THIS LOCATION.

PREPARED WITHOUT AT&T RECORDS. WE ACCEPT NO LIABILITY FOR FACILITIES OTHER THAN THOSE DEPICTED ON THIS CERTIFICATION FORM.



SO-DEEP
The Subsurface Utility Engineering Company
449 Munroe Falls Road
Tallmadge, OH 44278
(330) 794-4455

So-Deep Test Hole Certification Form
© So-Deep 1988, 1991

So-Deep, Corporate Office
8397 Euclid Avenue
Manassas Park, VA 20111
(703)361-6005

City, County, State CITY OF MORRIS, IL
Gen. Loc. NE CORNER JACKSON ST & DIVISION ST
Recorded Size/Material/Type 8" LINK TYPE (C.D.M.) WATER LINE
Foreman/Truck/Form By J. CLINE / 219 / P. REYNOLDS

Condition of paving prior to work CONC CURBS IN GOOD CONDITION

B.M. 1 Elev. = 528.87
is GIVEN

Description: (BM #102) TOP OF RR SPIKE FOUND IN L.P., 37'± LT OF STA. 13+52.3, DIVISION ST.

B.M. 2 Elev. = 528.69
is GIVEN

Description: (BM #104) CHIS "X" FOUND NE CAP BOLT OF P.H., 40'± RT OF STA. 21+33.2, DIVISION ST.

Benchmarks check BY 6/87
Elevations are referenced to B.M.#1

SO-DEEP will attempt to use the BMM most applicable to your design. If however, BMM differ by more than .05, resulting differences could cause design conflicts.

Recorded Size/Type of utility WAS FOUND

There WERE NOT additional utilities in the test hole

The utility WAS in good condition

Paving Thickness and type 12" CONCRETE

Color of ribbon installed BLUE

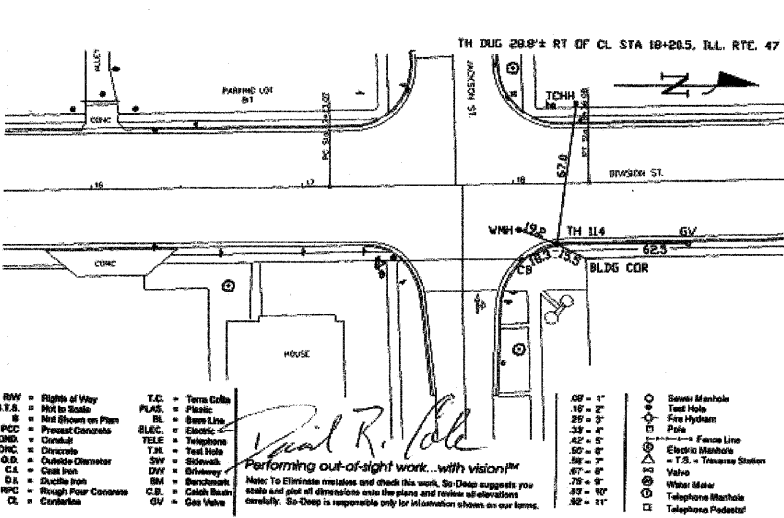
Soil Type MORTY SAND

Field Condition CONCRETE CURB

T.H. tied to CHIS "X"

8" D.I. WATER LINE
Size/Material/Type
Portion of pipe exposed for O.D. measurement:
FULL

Remarks: NONE



SO-DEEP
The Subsurface Utility Engineering Company
449 Munroe Falls Road
Tallmadge, OH 44278
(330) 794-4455

So-Deep Test Hole Certification Form
© So-Deep 1988, 1991

So-Deep, Corporate Office
8397 Euclid Avenue
Manassas Park, VA 20111
(703)361-6005

City, County, State CITY OF MORRIS, IL
Gen. Loc. DIVISION ST JUST NORTH OF JACKSON ST
Recorded Size/Material/Type 8-WAY LINK, TYPE (AT&T) TELE DUCT
Foreman/Truck/Form By J. CLINE / 219 / P. REYNOLDS

Condition of paving prior to work NO PAVING

B.M. 1 Elev. = 528.87
is GIVEN

Description: (BM #102) TOP OF RR SPIKE FOUND IN L.P., 37'± LT OF STA. 13+52.3, DIVISION ST.

B.M. 2 Elev. = 528.89
is GIVEN

Description: (BM #104) CHIS "X" FOUND NE CAP BOLT OF P.H., 40'± RT OF STA. 21+33.2, DIVISION ST.

Benchmarks check BY 6/87
Elevations are referenced to B.M.#1

SO-DEEP will attempt to use the BMM most applicable to your design. If however, BMM differ by more than .05, resulting differences could cause design conflicts.

Recorded Size/Type of utility WAS FOUND

There WERE additional utilities in the test hole

The utility WAS in good condition

Paving Thickness and type NO PAVING

Color of ribbon installed ORANGE

Soil Type MORTY SAND

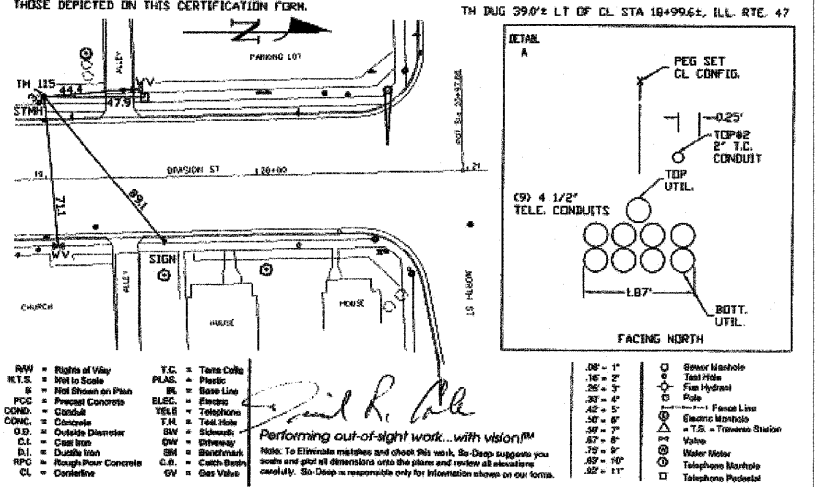
Field Condition GRASS RW

T.H. tied to PEG

(9) 4 1/2" PLA. (AT&T) TELE CONDUITS 1.11" M"
Size/Material/Type
Portion of pipe exposed for O.D. measurement:
N/A

Remarks: ALSO FOUND IN TEST HOLE A 2" STEEL (DOT) TRAFFIC CONTROL CONDUIT RUNNING ABOVE & PARALLEL TO THE 9 TELE CONDUITS.
TELE DUCT CONTAINS FIBER OPTICS AT THIS LOCATION.

PREPARED WITHOUT AT&T RECORDS. WE ACCEPT NO LIABILITY FOR FACILITIES OTHER THAN THOSE DEPICTED ON THIS CERTIFICATION FORM.



REVISIONS	
NAME	DATE

ILLINOIS DEPARTMENT OF TRANSPORTATION
SUBSURFACE UTILITY ENGINEERING TEST HOLES
SCALE: NONE
DATE: 09/2007
DRAWN BY: KHH
CHECKED BY: FML