

F.A.P. RTE.	SECTION	COUNTY	TOTAL SHEETS	SHEET NO.
326	(111CS) W&RS-21	GRUNDY	85	85-L
STA.		TO STA.		
FED. ROAD DIST. NO. ILLINOIS FED. AID PROJECT				



So-Deep Test Hole Certification Form

So-Deep, Corporate Office
8397 Euclid Avenue
Manassas Park, VA 20111
(703)361-6005
Control # SB.B433
Test Hole # 118
Plan Scale 1"=20'
Sheet # 3
Proposed CURB & GUTTER
Date JULY 12, 2008

City, County, State CITY OF MORRIS, IL
Gen. Loc. DIVISION ST JUST NORTH OF JACKSON ST
Recorded Size/Material/Type 4" LINE, TYPE (C.O.M.) WATER LINE
Foreman/Truck/Form By J. CLINE / 218 / P. REYNOLDS

Condition of paving prior to work NO PAVING

B.M. 1 Elev. = 624.81'
is GIVEN Description: (BM #102) TOP OF RR SPIKE FOUND IN L.P., 37s
LT OF STA. 19+87.2, DIVISION ST.
B.M. 2 Elev. = 628.59'
is GIVEN Description: (BM #104) CHS "X" FOUND NE CAP BOLT OF
P.H., 40s RT OF STA. 21+33.2, DIVISION ST.
Benchmarks check BY 60"
Elevations are referenced to S.M.81

SO-DEEP will attempt to use the
SMH most applicable to your
design. If however, this differs by
more than .05, resulting differences
could cause design conflicts.

Recorded Size/Type of utility WAS FOUND

There WERE NOT additional utilities in the test hole

The utility WAS in good condition.

Paving Thickness and type NO PAVING

Color of ribbon installed BLUE

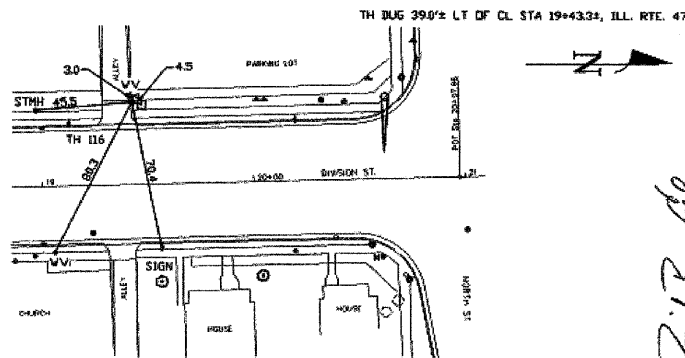
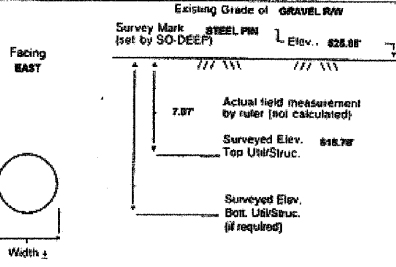
Soil Type WET SAND & ROCK

Field Condition GRAVEL SHOULDER

T.H. tied to STEEL PIN

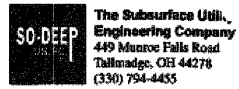
2" CORRUGATED METALLIC WATER LINE
Size/Material/Type
Portion of pipe exposed
for O.D. measurement.

Remarks: THE CREW COULD NOT OBTAIN AN ACCURATE O.D.
MEASUREMENT DUE TO COPOLUS AMOUNTS OF WATER UNSTABLE
GROUND CONDITIONS IN THE TEST HOLE. TOP SIDE SURVEY, UTILITY
RECORDS RESEARCH & ELECTRONIC DESIGNATING ALL INDICATE
THE T.H. WAS DUG ON THE CORRECT UTILITY.



- | | | | |
|------------------------------|--------------------|-----------|---------------------------|
| NW = Right of Way | T.C. = Terra Cotta | 38" - 1" | ○ Sewer Manhole |
| N.T.S. = Not to Scale | PLAS = Plastic | 36" - 2" | ○ Test Hole |
| W = Not Shown on Plan | BL = Base Line | 30" - 3" | ○ Fire Hydrant |
| POC = Precast Concrete | ELEC = Electric | 28" - 4" | ○ Pole |
| COND. = Conduit | TELE = Telephone | 24" - 5" | ○ Fence Line |
| CONC. = Concrete | T.H. = Test Hole | 20" - 6" | ○ Electric Manhole |
| O.D. = Outside Diameter | DIV = Ditchmark | 18" - 7" | ○ T.S. = Transfer Station |
| C.I. = Cast Iron | DIV = Ditchmark | 16" - 8" | ○ Valve |
| D.I. = Ductile Iron | BM = Benchmark | 14" - 9" | ○ Water Meter |
| RPC = Rough/Precast Concrete | C.B. = Catch Basin | 12" - 10" | ○ Telephone Manhole |
| CL = Centerline | GV = Gas Valve | 10" - 11" | □ Telephone Pedestal |

Performing out-of-sight work...with vision!SM
Note: To Eliminate mistakes and check this work, So-Deep suggests you
look and put all dimensions over the plans and review all situations
carefully. So-Deep is responsible only for information shown on our forms.



So-Deep Test Hole Certification Form

So-Deep, Corporate Office
8397 Euclid Avenue
Manassas Park, VA 20111
(703)361-6005
Control # SB.B433
Test Hole # 117
Plan Scale 1"=20'
Sheet # 3
Proposed GRADE CHANGE
Date JULY 11, 2008

City, County, State CITY OF MORRIS, IL
Gen. Loc. NW CORNER OF NORTH ST & DIVISION ST
Recorded Size/Material/Type 4" LINE, TYPE (C.O.M.) WATER LINE
Foreman/Truck/Form By J. CLINE / 218 / P. REYNOLDS

Condition of paving prior to work ASPHALT ROWY IN GOOD CONDITION

B.M. 1 Elev. = 628.89'
is GIVEN Description: (BM #104) CHS "X" FOUND NE CAP BOLT OF P.H.,
40s RT OF STA. 21+33.2, DIVISION ST.
B.M. 2 Elev. = 628.19'
is GIVEN Description: (BM #103) TOP OF NAIL FOUND IN L.P., 40s LT OF
STA. 24+79.2, DIVISION ST.
Benchmarks check BY 60"
Elevations are referenced to S.M.81

SO-DEEP will attempt to use the
SMH most applicable to your
design. If however, this differs by
more than .05, resulting differences
could cause design conflicts.

Recorded Size/Type of utility WAS FOUND

There WERE NOT additional utilities in the test hole

The utility WAS in good condition.

Paving Thickness and type 18" ASPHALT

Color of ribbon installed BLUE

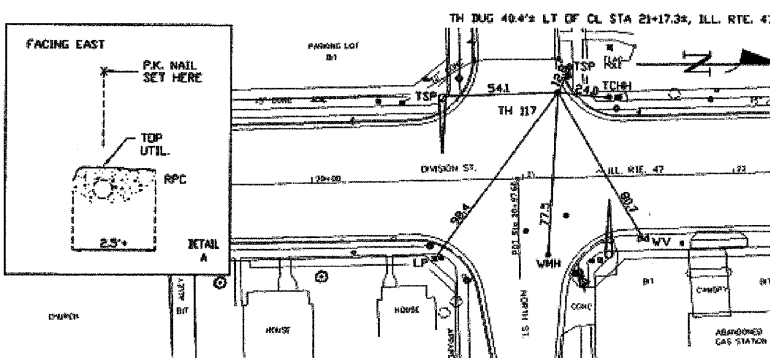
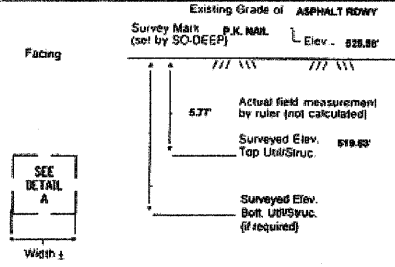
Soil Type WET SAND & DEBRIS

Field Condition MODERATE RD TRAFFIC

T.H. tied to P.K. NAIL

2.5" RPC
Size/Material/Type
Portion of pipe exposed
for O.D. measurement.

Remarks: THE CREW COULD NOT OBTAIN AN ACCURATE OR OR O.D.
MEASUREMENT DUE TO THE 4" WATER LINE BEING EMBEDDED ON
LYING DIRECTLY BENEATH THE 2.5" RPC.



- | | | | |
|------------------------------|--------------------|-----------|---------------------------|
| NW = Right of Way | T.C. = Terra Cotta | 38" - 1" | ○ Sewer Manhole |
| N.T.S. = Not to Scale | PLAS = Plastic | 36" - 2" | ○ Test Hole |
| W = Not Shown on Plan | BL = Base Line | 30" - 3" | ○ Fire Hydrant |
| POC = Precast Concrete | ELEC = Electric | 28" - 4" | ○ Pole |
| COND. = Conduit | TELE = Telephone | 24" - 5" | ○ Fence Line |
| CONC. = Concrete | T.H. = Test Hole | 20" - 6" | ○ Electric Manhole |
| O.D. = Outside Diameter | DIV = Ditchmark | 18" - 7" | ○ T.S. = Transfer Station |
| C.I. = Cast Iron | DIV = Ditchmark | 16" - 8" | ○ Valve |
| D.I. = Ductile Iron | BM = Benchmark | 14" - 9" | ○ Water Meter |
| RPC = Rough/Precast Concrete | C.B. = Catch Basin | 12" - 10" | ○ Telephone Manhole |
| CL = Centerline | GV = Gas Valve | 10" - 11" | □ Telephone Pedestal |

Performing out-of-sight work...with vision!SM
Note: To Eliminate mistakes and check this work, So-Deep suggests you
look and put all dimensions over the plans and review all situations
carefully. So-Deep is responsible only for information shown on our forms.



So-Deep Test Hole Certification Form

So-Deep, Corporate Office
8397 Euclid Avenue
Manassas Park, VA 20111
(703)361-6005
Control # SB.B433
Test Hole # 118
Plan Scale 1"=20'
Sheet # 3
Proposed CURB & GUTTER
Date JULY 11, 2008

City, County, State CITY OF MORRIS, IL
Gen. Loc. NW CORNER OF NORTH ST & DIVISION ST
Recorded Size/Material/Type 2" PLASTIC (NORC) GAS LINE
Foreman/Truck/Form By J. CLINE / 218 / P. REYNOLDS

Condition of paving prior to work ASPHALT ROWY IN GOOD CONDITION

B.M. 1 Elev. = 628.89'
is GIVEN Description: (BM #104) CHS "X" FOUND NE CAP BOLT OF P.H.,
40s RT OF STA. 21+33.2, DIVISION ST.
B.M. 2 Elev. = 628.19'
is GIVEN Description: (BM #103) TOP OF NAIL FOUND IN L.P., 40s LT OF
STA. 24+79.2, DIVISION ST.
Benchmarks check BY 60"
Elevations are referenced to S.M.81

SO-DEEP will attempt to use the
SMH most applicable to your
design. If however, this differs by
more than .05, resulting differences
could cause design conflicts.

Recorded Size/Type of utility WAS FOUND

There WERE NOT additional utilities in the test hole

The utility WAS in good condition.

Paving Thickness and type 18" ASPHALT

Color of ribbon installed YELLOW

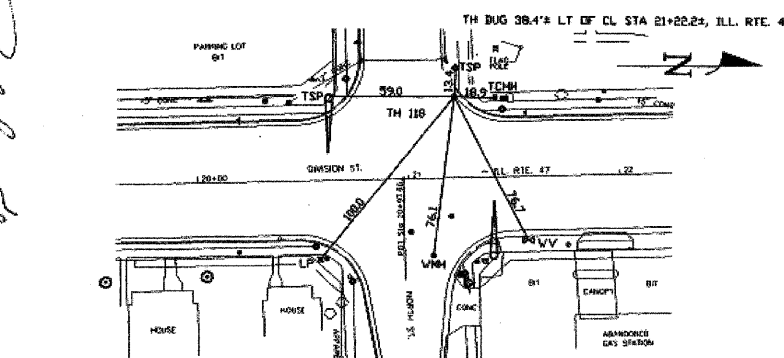
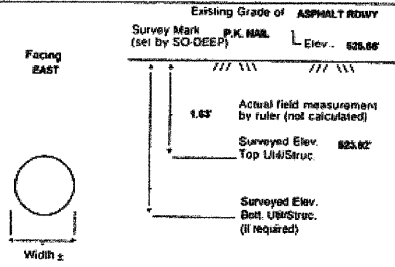
Soil Type MOST BROWN

Field Condition MODERATE RD TRAFFIC

T.H. tied to P.K. NAIL

2 1/2" PLASTIC (NORC) GAS LINE
Size/Material/Type
Portion of pipe exposed
for O.D. measurement.

Remarks: NONE



- | | | | |
|------------------------------|--------------------|-----------|---------------------------|
| NW = Right of Way | T.C. = Terra Cotta | 38" - 1" | ○ Sewer Manhole |
| N.T.S. = Not to Scale | PLAS = Plastic | 36" - 2" | ○ Test Hole |
| W = Not Shown on Plan | BL = Base Line | 30" - 3" | ○ Fire Hydrant |
| POC = Precast Concrete | ELEC = Electric | 28" - 4" | ○ Pole |
| COND. = Conduit | TELE = Telephone | 24" - 5" | ○ Fence Line |
| CONC. = Concrete | T.H. = Test Hole | 20" - 6" | ○ Electric Manhole |
| O.D. = Outside Diameter | DIV = Ditchmark | 18" - 7" | ○ T.S. = Transfer Station |
| C.I. = Cast Iron | DIV = Ditchmark | 16" - 8" | ○ Valve |
| D.I. = Ductile Iron | BM = Benchmark | 14" - 9" | ○ Water Meter |
| RPC = Rough/Precast Concrete | C.B. = Catch Basin | 12" - 10" | ○ Telephone Manhole |
| CL = Centerline | GV = Gas Valve | 10" - 11" | □ Telephone Pedestal |

Performing out-of-sight work...with vision!SM
Note: To Eliminate mistakes and check this work, So-Deep suggests you
look and put all dimensions over the plans and review all situations
carefully. So-Deep is responsible only for information shown on our forms.

REVISIONS	
NAME	DATE

ILLINOIS DEPARTMENT OF TRANSPORTATION
**SUBSURFACE UTILITY
ENGINEERING
TEST HOLES**
SCALE: NONE
DATE: 09/2007
DRAWN BY: KHH
CHECKED BY: FML