

F.A.P. RTE.	SECTION	COUNTY	TOTAL SHEETS	SHEET NO.
326	(111CS) W&RS-21	GRUNDY	85	85-M
STA.		TO STA.		
FED. ROAD DIST. NO. ILLINOIS FED. AID PROJECT				

SO-DEEP
The Subsurface Utility Engineering Company
449 Monroe Falls Road
Tallmadge, OH 44278
(330) 794-4455

So-Deep Test Hole Certification Form
© So-Deep 1988, 1991

So-Deep, Corporate Office
8397 Euclid Avenue
Manassas Park, VA 20111
(703)361-6005
Control # 818433
Test Hole # 113
Plan Scale 1"=30'
Sheet # 3
Proposed Date GRADE CHANGE
JULY 17, 2008

City, County, State CITY OF MORRIS, IL
Gen. Loc. DIVISION ST @ ALLEY BTWN NORTH & CHAPIN
Recorded Size/Material/Type 8-WAY UNK. TYPE (AT&T) TELE DUCT
Foreman/Truck/Form By J. CLINE / 219 / P. REYNOLDS

Condition of paving prior to work ASPHALT RDWAY IN GOOD CONDITION

B.M. 1 Elev. = 828.70
is GIVEN

Description: (BM #108) TOP OF SURVEY NAIL FOUND, @ STA. 28+18.2, DIVISION ST.

B.M. 2 Elev. = 828.55
is GIVEN

Description: (BM #104) CHIS "X" FOUND NE CAP BOLT OF P.H., 40 1/2 RT OF STA. 21+33.2, DIVISION ST.

SO-DEEP will attempt to use the SMH most applicable to your design. If however, SMH differ by more than .05, resulting differences could cause design conflicts.

Benchmarks check BY GDT
Elevations are referenced to B.M.#2

Recorded Size/Type of utility WAS FOUND

There WERE additional utilities in the test hole

The utility WAS in good condition.

Paving Thickness and type 18 1/2" ASPHALT

Color of ribbon installed ORANGE

Soil Type MOIST SAND

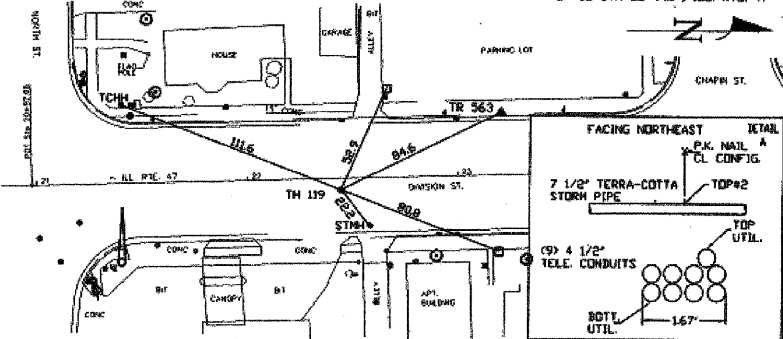
Field Condition HEAVY RD. TRAFFIC

T.H. tied to P.K. NAIL

18 1/2" P.L.A. (AT&T) TELE. CONDUITS 0.947"
Size/Material/Type
Portion of pipe exposed for O.D. measurement.
OTHER, (SEE REMARKS)

Remarks: ALSO FOUND IN TEST HOLE A 1 1/2" TERRA-COTTA (LDOT) STORM PIPE RUNNING ABOVE & PERPENDICULAR TO THE (8) TELE CONDUITS. TELE DUCT CONTAINS FIBER OPTICS AT THIS LOCATION.

PREPARED WITHOUT AT&T RECORDS. WE ACCEPT NO LIABILITY FOR FACILITIES OTHER THAN THOSE DEPICTED ON THIS CERTIFICATION FORM.



- | | | | |
|---------------------------|--------------------|----------|-------------------------------|
| R/W = Right of Way | E.C. = Terra Cotta | OP - 1" | ○ = Sewer Manhole |
| N.T.S. = Not to Scale | PLAS. = Plastic | OP - 2" | ○ = Test Hole |
| # = Not Shown on Plan | BL. = Base Line | OP - 3" | ○ = Fire Hydrant |
| PCC = Precast Concrete | ELSC. = Electric | OP - 4" | ○ = Pole |
| CONC. = Concrete | TELE. = Telephone | OP - 6" | ○ = Fence Line |
| CONC. = Concrete | T.H. = Test Hole | OP - 8" | ○ = Electric Manhole |
| O.D. = Outside Diameter | SW = Sewer | OP - 10" | ○ = T.S. = Transverse Station |
| C.I. = Cast Iron | DW = Driveway | OP - 12" | ○ = Valve |
| D.I. = Ductile Iron | SW = Sewer | OP - 14" | ○ = Water Meter |
| RPC = Rough-Pour Concrete | SW = Sewer | OP - 16" | ○ = Telephone Manhole |
| CL = Cement | SW = Sewer | OP - 18" | ○ = Telephone Pedestal |

Performing out-of-sight work...with vision!
Note: To eliminate mistakes and check this work, So-Deep suggests you make and plot all dimensions onto the plans and review all elevations carefully. So-Deep is responsible only for information shown on our forms.

SO-DEEP
The Subsurface Utility Engineering Company
449 Monroe Falls Road
Tallmadge, OH 44278
(330) 794-4455

So-Deep Test Hole Certification Form
© So-Deep 1988, 1991

So-Deep, Corporate Office
8397 Euclid Avenue
Manassas Park, VA 20111
(703)361-6005
Control # 818433
Test Hole # 120
Plan Scale 1"=30'
Sheet # 3
Proposed Date CURB & GUTTER
JULY 17, 2008

City, County, State CITY OF MORRIS, IL
Gen. Loc. DIVISION ST @ ALLEY BTWN NORTH & CHAPIN
Recorded Size/Material/Type UNK. SIZE & TYPE (C.O.M.) WATER LINE
Foreman/Truck/Form By J. CLINE / 219 / P. REYNOLDS

Condition of paving prior to work CONC. APRON IN GOOD CONDITION

B.M. 1 Elev. = 828.50
is GIVEN

Description: (BM #104) CHIS "X" FOUND NE CAP BOLT OF P.H., 40 1/2 RT OF STA. 21+33.2, DIVISION ST.

B.M. 2 Elev. = 826.15
is GIVEN

Description: (BM #103) TOP OF NAIL FOUND IN L.P., 40 1/2 LT OF STA. 21+78.2, DIVISION ST.

SO-DEEP will attempt to use the SMH most applicable to your design. If however, SMH differ by more than .05, resulting differences could cause design conflicts.

Benchmarks check BY GDT
Elevations are referenced to B.M.#1

Recorded Size/Type of utility WAS FOUND

There WERE NOT additional utilities in the test hole.

The utility WAS in good condition.

Paving Thickness and type 1" CONCRETE

Color of ribbon installed BLUE

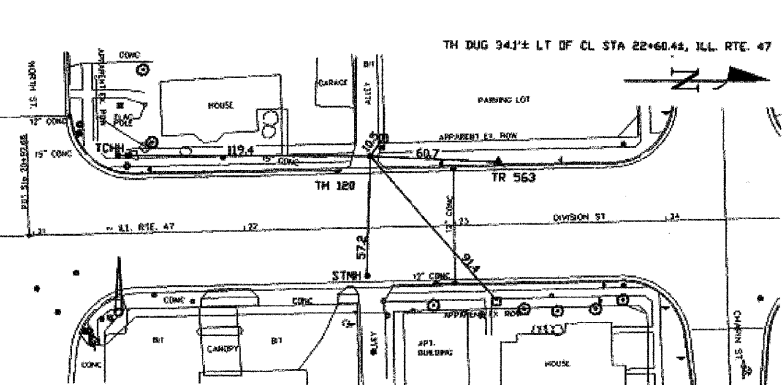
Soil Type WET SAND & ROCK

Field Condition CONC. APRON

T.H. tied to CHIS "X"

2 1/2" CORRODED METALLIC WATER LINE
Size/Material/Type
Portion of pipe exposed for O.D. measurement.
FULL

Remarks: NOTE: THIS 2 1/2" WATER LINE WAS FOUND CORRODED AT THIS LOCATION.



- | | | | |
|---------------------------|--------------------|----------|-------------------------------|
| R/W = Right of Way | T.C. = Terra Cotta | OP - 1" | ○ = Sewer Manhole |
| N.T.S. = Not to Scale | PLAS. = Plastic | OP - 2" | ○ = Test Hole |
| # = Not Shown on Plan | BL. = Base Line | OP - 3" | ○ = Fire Hydrant |
| PCC = Precast Concrete | ELEC. = Electric | OP - 4" | ○ = Pole |
| CONC. = Concrete | TELE. = Telephone | OP - 6" | ○ = Fence Line |
| CONC. = Concrete | T.H. = Test Hole | OP - 8" | ○ = Electric Manhole |
| O.D. = Outside Diameter | SW = Sewer | OP - 10" | ○ = T.S. = Transverse Station |
| C.I. = Cast Iron | DW = Driveway | OP - 12" | ○ = Valve |
| D.I. = Ductile Iron | SW = Sewer | OP - 14" | ○ = Water Meter |
| RPC = Rough-Pour Concrete | SW = Sewer | OP - 16" | ○ = Telephone Manhole |
| CL = Cement | SW = Sewer | OP - 18" | ○ = Telephone Pedestal |

Performing out-of-sight work...with vision!
Note: To eliminate mistakes and check this work, So-Deep suggests you make and plot all dimensions onto the plans and review all elevations carefully. So-Deep is responsible only for information shown on our forms.

SO-DEEP
The Subsurface Utility Engineering Company
449 Monroe Falls Road
Tallmadge, OH 44278
(330) 794-4455

So-Deep Test Hole Certification Form
© So-Deep 1988, 1991

So-Deep, Corporate Office
8397 Euclid Avenue
Manassas Park, VA 20111
(703)361-6005
Control # 818433
Test Hole # 123
Plan Scale 1"=30'
Sheet # 3
Proposed Date GRADE CHANGE
JULY 16, 2008

City, County, State CITY OF MORRIS, IL
Gen. Loc. DIVISION ST SOUTH OF CHAPIN ST
Recorded Size/Material/Type 8" UNK. TYPE (C.O.M.) WATER LINE
Foreman/Truck/Form By J. CLINE / 219 / P. REYNOLDS

Condition of paving prior to work ASPHALT RDWAY IN GOOD CONDITION

B.M. 1 Elev. = 828.70
is GIVEN

Description: (BM #108) TOP OF SURVEY NAIL FOUND, @ STA. 28+18.2, DIVISION ST.

B.M. 2 Elev. = 828.55
is GIVEN

Description: (BM #104) CHIS "X" FOUND NE CAP BOLT OF P.H., 40 1/2 RT OF STA. 21+33.2, DIVISION ST.

SO-DEEP will attempt to use the SMH most applicable to your design. If however, SMH differ by more than .05, resulting differences could cause design conflicts.

Benchmarks check BY GDT
Elevations are referenced to B.M.#2

Recorded Size/Type of utility WAS FOUND

There WERE NOT additional utilities in the test hole.

The utility WAS in good condition.

Paving Thickness and type 24" ASPHALT

Color of ribbon installed BLUE

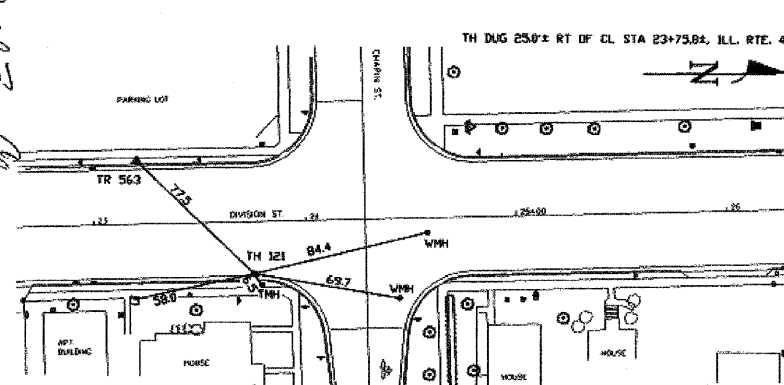
Soil Type MOIST SAND

Field Condition HEAVY RD. TRAFFIC

T.H. tied to P.K. NAIL

8 3/4" D.I. (C.O.M.) WATER LINE
Size/Material/Type
Portion of pipe exposed for O.D. measurement.
FULL

Remarks: NONE



- | | | | |
|---------------------------|--------------------|----------|-------------------------------|
| R/W = Right of Way | T.C. = Terra Cotta | OP - 1" | ○ = Sewer Manhole |
| N.T.S. = Not to Scale | PLAS. = Plastic | OP - 2" | ○ = Test Hole |
| # = Not Shown on Plan | BL. = Base Line | OP - 3" | ○ = Fire Hydrant |
| PCC = Precast Concrete | ELEC. = Electric | OP - 4" | ○ = Pole |
| CONC. = Concrete | TELE. = Telephone | OP - 6" | ○ = Fence Line |
| CONC. = Concrete | T.H. = Test Hole | OP - 8" | ○ = Electric Manhole |
| O.D. = Outside Diameter | SW = Sewer | OP - 10" | ○ = T.S. = Transverse Station |
| C.I. = Cast Iron | DW = Driveway | OP - 12" | ○ = Valve |
| D.I. = Ductile Iron | SW = Sewer | OP - 14" | ○ = Water Meter |
| RPC = Rough-Pour Concrete | SW = Sewer | OP - 16" | ○ = Telephone Manhole |
| CL = Cement | SW = Sewer | OP - 18" | ○ = Telephone Pedestal |

Performing out-of-sight work...with vision!
Note: To eliminate mistakes and check this work, So-Deep suggests you make and plot all dimensions onto the plans and review all elevations carefully. So-Deep is responsible only for information shown on our forms.

REVISIONS	
NAME	DATE

ILLINOIS DEPARTMENT OF TRANSPORTATION
SUBSURFACE UTILITY ENGINEERING TEST HOLES
SCALE: NONE
DATE: 09/2007
DRAWN BY: KHH
CHECKED BY: FML