

F.A.P. NO.	SECTION	COUNTY	TOTAL SHEETS	SHEET NO.
326	(111CS) W&RS-21	GRUNDY	85	85-N
STA. TO STA.		FED. AID PROJECT		
FED. ROAD DIST. NO.		ILLINOIS		

SO-DEEP
The Subsurface Utility Engineering Company
449 Monroe Falls Road
Tallmadge, OH 44278
(330) 794-4455

So-Deep Test Hole Certification Form

© So-Deep 1988, 1991

So-Deep, Corporate Office
8397 Euclid Avenue
Manassas Park, VA 20111
(703)361-6005
Control # 818433
Test Hole # 123
Plan Scale 1"=20'
Sheet # 3
Processed Date GRADE CHANGE JULY 16, 2008

City, County, State CITY OF MORRIS, IL
Gen. Loc. DIVISION ST SOUTH OF CHAPIN ST
Recorded Size/Material/Type 12" X 6" PRECAST CEMENT TILE VAULT
Foreman/Truck/Form By J. CLINE / 219 / P. REYNOLDS

Condition of paving prior to work NO PAVING

B.M. 1 Elev. = 628.70
is GIVEN Description: (BM #103) TOP OF SURVEY NAIL FOUND, @ STA. 28+19.6, DIVISION ST.
B.M. 2 Elev. = 628.87
is GIVEN Description: (BM #104) CHIS "X" FOUND NE CAP BOLT OF F.H., 40' RT OF STA. 21+332, DIVISION ST.

SO-DEEP will attempt to use the B.M. most applicable to your design. If however, B.M.s differ by more than .25', resulting differences could cause design conflicts.

Benchmarks check BY G&P
Elevations are referenced to B.M.#2

Recorded Size/Type of utility WAS FOUND

There WERE NOT additional utilities in the test hole.

The utility WAS in good condition.

Paving Thickness and type NO PAVING

Color of ribbon installed ORANGE

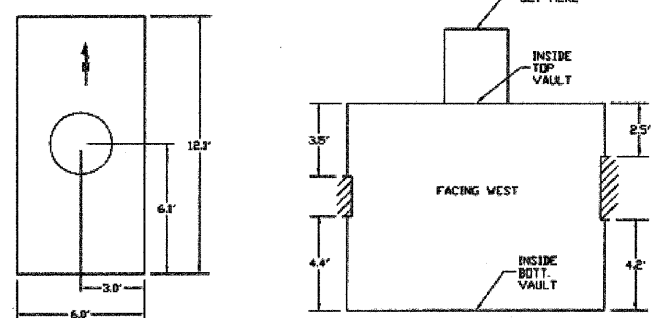
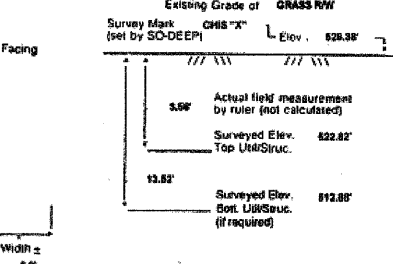
Soil Type NA

Field Condition GRASS RW

T.H. tied to CHIS "X" ON RIM

12" X 6" PRECAST CEMENT TILE VAULT
Size/Material/Type
Position of pipe exposed for O.D. measurement
OTHER: (SEE REMARKS)

Remarks: NONE



- | | | |
|---------------------------|-----------------------|---------------------------|
| RTW = Right of Way | T.C. = Trench Cuts | SW = Sewer Manhole |
| N.T.S. = Not to Scale | PLAS. = Plastics | TH = Test Hole |
| EL = Not Shown on Plan | EL = Base Line | FLH = Fire Hydrant |
| CC = Precast Concrete | ELEC. = Electric | FL = Fence Line |
| CONC. = Concrete | TELE = Telephone | EM = Electric Manhole |
| CONC. = Concrete | T.H. = Test Hole | T.S. = Traverse Station |
| C.D. = Outside Diameter | SW = Sewer | VALV = Valve |
| CL = Cast Iron | DW = Driveway | WATER METER = Water Meter |
| CL = Cast Iron | SM = Sanitary Manhole | TM = Telephone Manhole |
| APC = Rough Pour Concrete | C.B. = Catch Basin | TP = Telephone Pedestal |
| CL = Cast Iron | GV = Gas Valve | |

Performing out-of-sight work...with vision!SM
Note: To eliminate mistakes and check this work, So-Deep suggests you make and plot all dimensions onto the plans and review all elevations carefully. So-Deep is responsible only for information shown on our forms.

SO-DEEP
The Subsurface Utility Engineering Company
449 Monroe Falls Road
Tallmadge, OH 44278
(330) 794-4455

So-Deep Test Hole Certification Form

© So-Deep 1988, 1991

So-Deep, Corporate Office
8397 Euclid Avenue
Manassas Park, VA 20111
(703)361-6005
Control # 818433
Test Hole # 123
Plan Scale 1"=20'
Sheet # 3
Processed Date CURB & GUTTER JULY 16, 2008

City, County, State CITY OF MORRIS, IL
Gen. Loc. NE CORNER OF CHAPIN ST & DIVISION ST
Recorded Size/Material/Type 6" STEEL (NICOR) GAS LINE
Foreman/Truck/Form By J. CLINE / 219 / P. REYNOLDS

Condition of paving prior to work NO PAVING

B.M. 1 Elev. = 628.70
is GIVEN Description: (BM #103) TOP OF SURVEY NAIL FOUND, @ STA. 28+19.6, DIVISION ST.
B.M. 2 Elev. = 628.87
is GIVEN Description: (BM #104) CHIS "X" FOUND NE CAP BOLT OF F.H., 40' RT OF STA. 21+332, DIVISION ST.

SO-DEEP will attempt to use the B.M. most applicable to your design. If however, B.M.s differ by more than .25', resulting differences could cause design conflicts.

Benchmarks check BY G&P
Elevations are referenced to B.M.#2

Recorded Size/Type of utility WAS FOUND

There WERE NOT additional utilities in the test hole.

The utility WAS in good condition.

Paving Thickness and type NO PAVING

Color of ribbon installed YELLOW

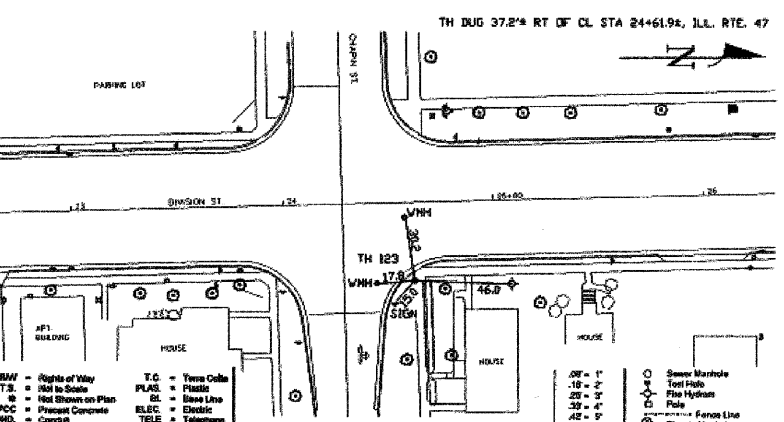
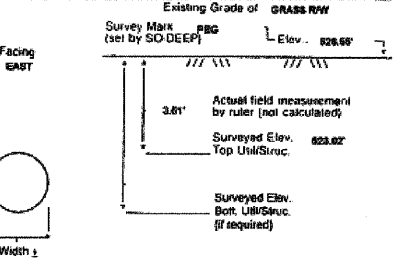
Soil Type MOIST SAND

Field Condition GRASS RW

T.H. tied to PEG

6" 1/2" COATED STEEL (NICOR) GAS LINE
Size/Material/Type
Position of pipe exposed for O.D. measurement
FULL

Remarks: NONE



- | | | |
|---------------------------|-----------------------|---------------------------|
| RTW = Right of Way | T.C. = Trench Cuts | SW = Sewer Manhole |
| N.T.S. = Not to Scale | PLAS. = Plastics | TH = Test Hole |
| EL = Not Shown on Plan | EL = Base Line | FLH = Fire Hydrant |
| CC = Precast Concrete | ELEC. = Electric | FL = Fence Line |
| CONC. = Concrete | TELE = Telephone | EM = Electric Manhole |
| CONC. = Concrete | T.H. = Test Hole | T.S. = Traverse Station |
| C.D. = Outside Diameter | SW = Sewer | VALV = Valve |
| CL = Cast Iron | DW = Driveway | WATER METER = Water Meter |
| CL = Cast Iron | SM = Sanitary Manhole | TM = Telephone Manhole |
| APC = Rough Pour Concrete | C.B. = Catch Basin | TP = Telephone Pedestal |
| CL = Cast Iron | GV = Gas Valve | |

Performing out-of-sight work...with vision!SM
Note: To eliminate mistakes and check this work, So-Deep suggests you make and plot all dimensions onto the plans and review all elevations carefully. So-Deep is responsible only for information shown on our forms.

SO-DEEP
The Subsurface Utility Engineering Company
449 Monroe Falls Road
Tallmadge, OH 44278
(330) 794-4455

So-Deep Test Hole Certification Form

© So-Deep 1988, 1991

So-Deep, Corporate Office
8397 Euclid Avenue
Manassas Park, VA 20111
(703)361-6005
Control # 818433
Test Hole # 124
Plan Scale 1"=20'
Sheet # 4
Processed Date CURB & GUTTER JULY 16, 2008

City, County, State CITY OF MORRIS, IL
Gen. Loc. DIVISION ST SOUTH OF BERTHOFF ST
Recorded Size/Material/Type 2" 1/2" COPPER (C.O.M.) WATER LINE
Foreman/Truck/Form By J. CLINE / 219 / P. REYNOLDS

Condition of paving prior to work NO PAVING

B.M. 1 Elev. = 628.70
is GIVEN Description: (BM #103) TOP OF SURVEY NAIL FOUND, @ STA. 28+19.6, DIVISION ST.
B.M. 2 Elev. = 628.87
is GIVEN Description: (BM #104) CHIS "X" FOUND NE CAP BOLT OF F.H., 40' RT OF STA. 21+332, DIVISION ST.

SO-DEEP will attempt to use the B.M. most applicable to your design. If however, B.M.s differ by more than .25', resulting differences could cause design conflicts.

Benchmarks check BY G&P
Elevations are referenced to B.M.#1

Recorded Size/Type of utility WAS FOUND

There WERE NOT additional utilities in the test hole.

The utility WAS in good condition.

Paving Thickness and type NO PAVING

Color of ribbon installed BLUE

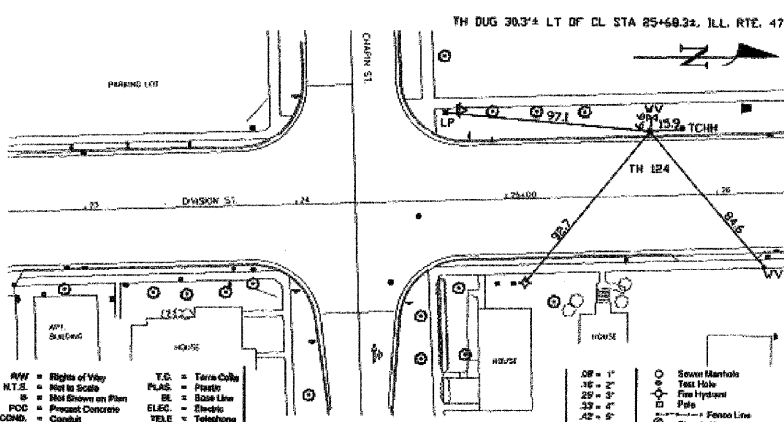
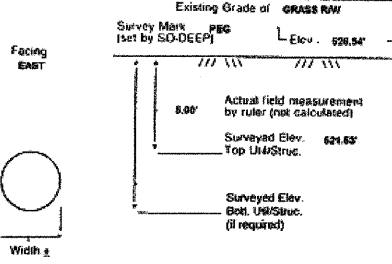
Soil Type MOIST SAND

Field Condition GRASS RW

T.H. tied to PEG

2" 1/2" COPPER (C.O.M.) WATER LINE
Size/Material/Type
Position of pipe exposed for O.D. measurement
FULL

Remarks: NONE



- | | | |
|---------------------------|-----------------------|---------------------------|
| RTW = Right of Way | T.C. = Trench Cuts | SW = Sewer Manhole |
| N.T.S. = Not to Scale | PLAS. = Plastics | TH = Test Hole |
| EL = Not Shown on Plan | EL = Base Line | FLH = Fire Hydrant |
| CC = Precast Concrete | ELEC. = Electric | FL = Fence Line |
| CONC. = Concrete | TELE = Telephone | EM = Electric Manhole |
| CONC. = Concrete | T.H. = Test Hole | T.S. = Traverse Station |
| C.D. = Outside Diameter | SW = Sewer | VALV = Valve |
| CL = Cast Iron | DW = Driveway | WATER METER = Water Meter |
| CL = Cast Iron | SM = Sanitary Manhole | TM = Telephone Manhole |
| APC = Rough Pour Concrete | C.B. = Catch Basin | TP = Telephone Pedestal |
| CL = Cast Iron | GV = Gas Valve | |

Performing out-of-sight work...with vision!SM
Note: To eliminate mistakes and check this work, So-Deep suggests you make and plot all dimensions onto the plans and review all elevations carefully. So-Deep is responsible only for information shown on our forms.

REVISIONS	
NAME	DATE

ILLINOIS DEPARTMENT OF TRANSPORTATION
SUBSURFACE UTILITY
ENGINEERING
TEST HOLES

SCALE: NONE
DATE: 09/2007
DRAWN BY: KHH
CHECKED BY: FML

ADDED SHEET 9-02-08, MJ