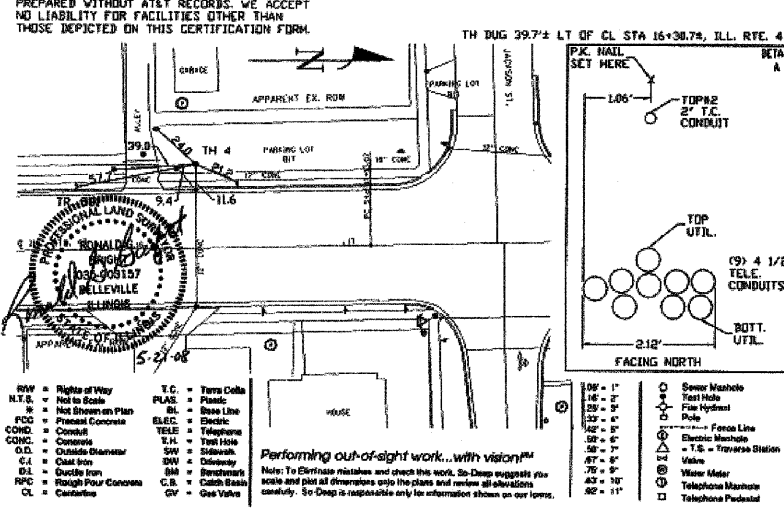
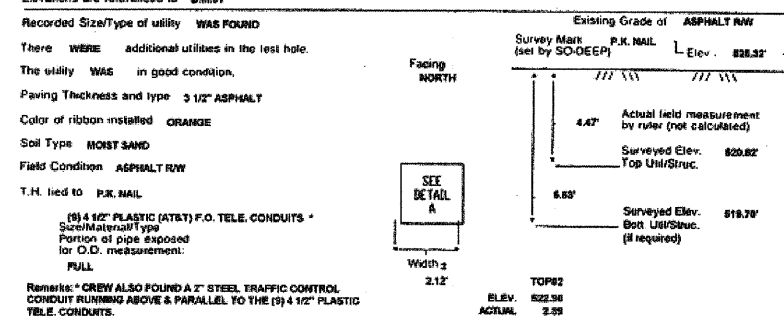


CONTRACT #66720				
F.A.P. RTE.	SECTION	COUNTY	TOTAL SHEETS	SHEET NO.
326	(111CS) W&RS-2I	GRUNDY	85	85-B
STA.		TO STA.		
FED. ROAD DIST. NO. ILLINOIS FED. AID PROJECT				

So-Deep Test Hole Certification Form
 © So-Deep 1988, 1991
 The Subsurface Utility Engineering Company
 449 Munroe Falls Road
 Tallmadge, OH 44278
 (330) 794-4455

City, County, State: CITY OF MORRIS, IL
 Gen. Loc.: DIVISION ST., 300' N OF JEFFERSON ST.
 Recorded Size/Material/Type: 8-WAY UNK. TYPE (AT&T) F.O. TELE. DUCT
 Foreman/Truck#/Form By: J. CLINE/219/P. REYNOLDS

Condition of paving prior to work: ASP. RWY IN GOOD CONDITION
 Description: (BM #102) TOP OF RR SPIKE FOUND, IN L.P., 37.2' LT OF CL STA 13+97.1, ILL. RTE. 47
 B.M. 1 Elev. = 524.87' IS GIVEN
 B.M. 2 Elev. = 526.16' IS GIVEN
 Benchmarks check BY 603' Elevations are referenced to B.M.#2

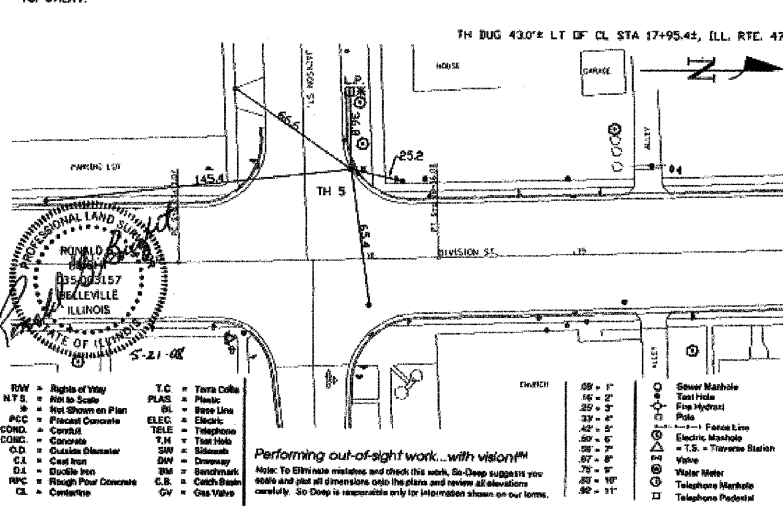
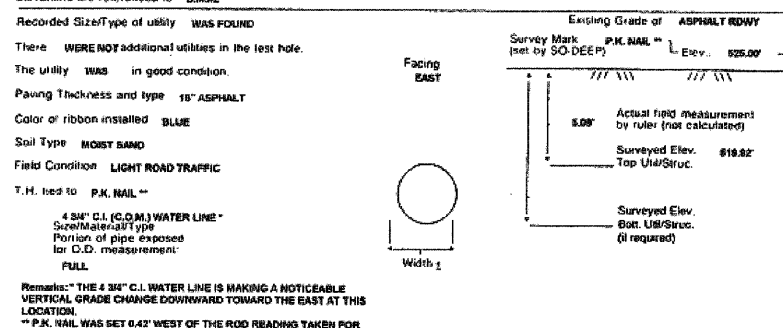


- R/W = Right of Way
- N.T.S. = Not to Scale
- PC = Precast Concrete
- CONC. = Concrete
- O.D. = Outside Diameter
- C.I. = Cast Iron
- D.I. = Ductile Iron
- RFC = Rough Pave Concrete
- CL = Cast Iron
- T.C. = Terra Cotta
- PLAS. = Plastic
- BL. = Base Line
- ELEC. = Electric
- TELE. = Telephone
- T.H. = Test Hole
- SW = Sewer
- DW = Driveway
- BM = Benchmark
- C.B. = Catch Basin
- GV = Gas Valve
- Survey Mark (set by SO-DEEP)
- P.K. NAIL
- TOP2
- ACTUAL
- TOP2 ELEV. 522.96
- ACTUAL 2.99
- SEE DETAIL A
- Width: 2.12'
- Facing NORTH

So-Deep Test Hole Certification Form
 © So-Deep 1988, 1991
 The Subsurface Utility Engineering Company
 449 Munroe Falls Road
 Tallmadge, OH 44278
 (330) 794-4455

City, County, State: CITY OF MORRIS, IL
 Gen. Loc.: NW CORNER JACKSON ST. & DIVISION ST.
 Recorded Size/Material/Type: 4" UNK. TYPE (C.D.M.) WATER LINE
 Foreman/Truck#/Form By: J. CLINE/219/P. REYNOLDS

Condition of paving prior to work: ASP. RWY IN GOOD CONDITION
 Description: (BM #104) CHS "X" FOUND, NE CAP BOLT OF P.H., 40.2' RT OF CL STA 21+356, ILL. RTE. 47
 B.M. 1 Elev. = 528.68' IS GIVEN
 B.M. 2 Elev. = 526.16' IS GIVEN
 Benchmarks check BY 603' Elevations are referenced to B.M.#2

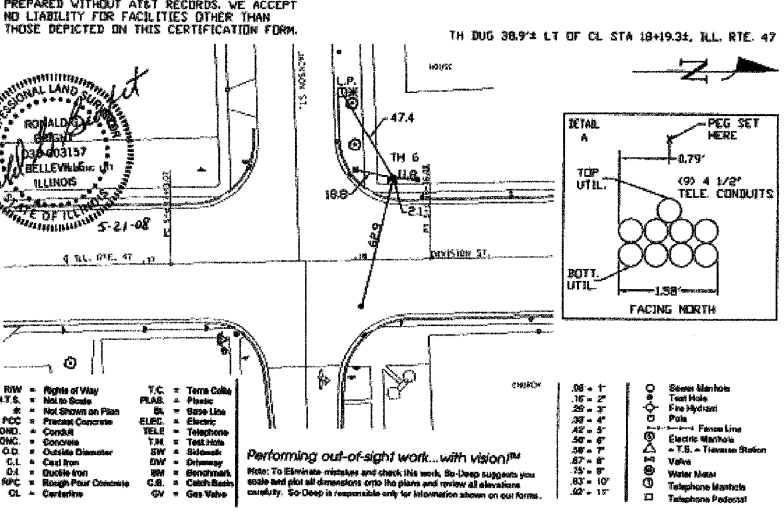
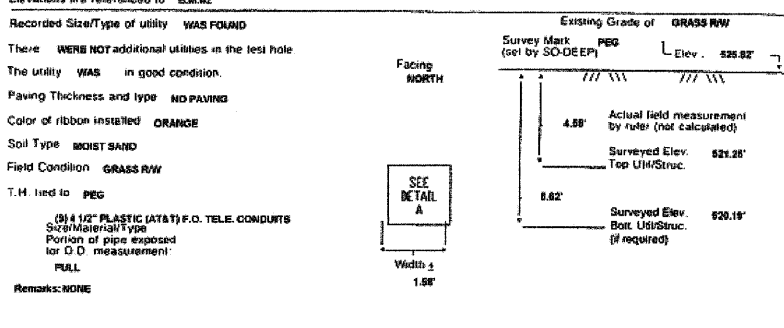


- R/W = Right of Way
- N.T.S. = Not to Scale
- PC = Precast Concrete
- CONC. = Concrete
- O.D. = Outside Diameter
- C.I. = Cast Iron
- D.I. = Ductile Iron
- RFC = Rough Pave Concrete
- CL = Cast Iron
- T.C. = Terra Cotta
- PLAS. = Plastic
- BL. = Base Line
- ELEC. = Electric
- TELE. = Telephone
- T.H. = Test Hole
- SW = Sewer
- DW = Driveway
- BM = Benchmark
- C.B. = Catch Basin
- GV = Gas Valve
- Survey Mark (set by SO-DEEP)
- P.K. NAIL
- TOP2
- ACTUAL
- TOP2 ELEV. 525.00'
- ACTUAL 2.99
- SEE DETAIL A
- Width: 1.58'
- Facing EAST

So-Deep Test Hole Certification Form
 © So-Deep 1988, 1991
 The Subsurface Utility Engineering Company
 449 Munroe Falls Road
 Tallmadge, OH 44278
 (330) 794-4455

City, County, State: CITY OF MORRIS, IL
 Gen. Loc.: NW CORNER JACKSON ST. & DIVISION ST.
 Recorded Size/Material/Type: 8-WAY UNK. TYPE (AT&T) F.O. TELE. DUCT
 Foreman/Truck#/Form By: J. CLINE/219/P. REYNOLDS

Condition of paving prior to work: NO PAVING
 Description: (BM #102) TOP OF NAIL FOUND, IN L.P., 43.2' LT OF CL STA 19+002, ILL. RTE. 47
 B.M. 1 Elev. = 528.68' IS GIVEN
 B.M. 2 Elev. = 526.16' IS GIVEN
 Benchmarks check BY 603' Elevations are referenced to B.M.#2



- R/W = Right of Way
- N.T.S. = Not to Scale
- PC = Precast Concrete
- CONC. = Concrete
- O.D. = Outside Diameter
- C.I. = Cast Iron
- D.I. = Ductile Iron
- RFC = Rough Pave Concrete
- CL = Cast Iron
- T.C. = Terra Cotta
- PLAS. = Plastic
- BL. = Base Line
- ELEC. = Electric
- TELE. = Telephone
- T.H. = Test Hole
- SW = Sewer
- DW = Driveway
- BM = Benchmark
- C.B. = Catch Basin
- GV = Gas Valve
- Survey Mark (set by SO-DEEP)
- PEG
- TOP UTILITY
- ACTUAL
- TOP UTILITY ELEV. 521.28'
- ACTUAL 1.58'
- SEE DETAIL A
- Width: 1.58'
- Facing NORTH

REVISIONS		ILLINOIS DEPARTMENT OF TRANSPORTATION
NAME	DATE	
		SUBSURFACE UTILITY ENGINEERING TEST HOLES SCALE: NONE DATE: 09/2007 DRAWN BY: KKH CHECKED BY: FML

ADDED SHEET 9-02-08, MJ