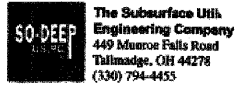


F.A.P. SECTION COUNTY TOTAL SHEET
326 (111CS) W&RS-21 GRUNDY 85 85-C
STA. TO STA.
FED. ROAD DIST. NO. ILLINOIS FED. AID PROJECT



The Subsurface Util. Engineering Company  
449 Monroe Falls Road  
Tallmadge, OH 44278  
(330) 794-4455

### So-Deep Test Hole Certification Form

© So-Deep 1988, 1991

So-Deep, Corporate Office  
8397 Euclid Avenue  
Manassas Park, VA 20111  
(703)361-6005

### So-Deep Test Hole Certification Form

© So-Deep 1988, 1991

So-Deep, Corporate Office  
8397 Euclid Avenue  
Manassas Park, VA 20111  
(703)361-6005



The Subsurface Util. Engineering Company  
449 Monroe Falls Road  
Tallmadge, OH 44278  
(330) 794-4455

### So-Deep Test Hole Certification Form

© So-Deep 1988, 1991

So-Deep, Corporate Office  
8397 Euclid Avenue  
Manassas Park, VA 20111  
(703)361-6005

City, County, State: CITY OF MORRIS, IL  
Gen. Loc.: DIVISION ST. JUST S OF NORTH ST.  
Recorded Size/Material/Type: 8" UNK. TYPE (A/T&T) TELE. DUCT  
Foreman/Trucker/Form By: J. CLINE / 218 / P. REYNOLDS

Condition of paving prior to work: CONC. SIDEWALK POOR CONDITION  
Control # 818433  
Test Hole # 7  
Plan Scale 1"=20'  
Sheet # 3  
Proposed STORM X-ING  
Date MAY 12, 2008

B.M. 1 Elev. = 528.58'  
is GIVEN  
Description: (BM #104) CHIS "X" FOUND, NE CAP BOLT OF F.H., 40" RT OF CL STA 21+386, ILL. RTE. 47

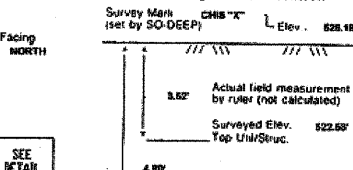
B.M. 2 Elev. = 527.41'  
is GIVEN  
Description: (BM #105) TOP OF NAIL FOUND, IN L.P., 43" LT OF CL STA 19+992, ILL. RTE. 47

SO-DEEP will attempt to use the B.M. #1 most applicable to your design. If however, B.M. #1 is more than 25' bearing differences exist, please design controls.

Benchmarks check BY GUY  
Elevations are referenced to B.M.#1

Benchmarks check BY GUY  
Elevations are referenced to B.M.#1

Recorded Size/Type of utility WAS FOUND  
There WERE additional utilities in the test hole  
The utility WAS in good condition.  
Paving Thickness and type 4" CONCRETE  
Color of ribbon installed ORANGE  
Soil Type MOIST SAND  
Field Condition CONC. SIDEWALK  
T.H. led to CHIS "X"



(3) 4 1/2" PLASTIC (A/T&T) P.O. TELE. CONDUITS +  
Size/Material/Type  
Portion of pipe exposed for O.D. measurement  
FULL

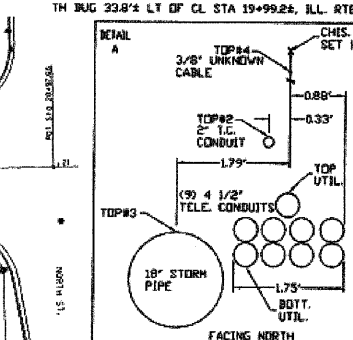
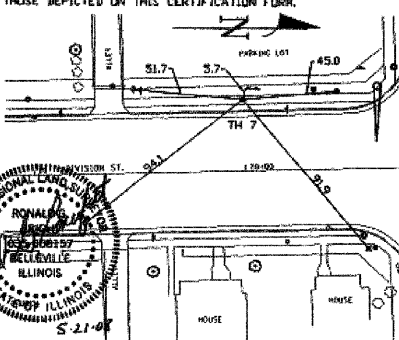
Actual field measurement by ruler (not calculated)  
Surveyed Elev. 522.58'  
Top Util/Struc.  
Surveyed Elev. 521.37'  
Bot. Util/Struc. (if required)

Remarks: CREW ALSO FOUND A 3/8" UNK. FUNCTION CABLE, 2" STEEL TRAFFIC CONTROL CONDUIT AND AN 18" CONCRETE STORM PIPE RUNNING PARALLEL TO THE (3) 4 1/2" PLASTIC (A/T&T) P.O. TELE. CONDUITS.

TOP#1	TOP#3	TOP#4
ELEV. 528.41	521.89	528.91
ACTUAL 2.74	4.32	0.25

PREPARED WITHOUT A/T&T RECORDS. WE ACCEPT NO LIABILITY FOR FACILITIES OTHER THAN THOSE DEPICTED ON THIS CERTIFICATION FORM.

PREPARED WITHOUT A/T&T RECORDS. WE ACCEPT NO LIABILITY FOR FACILITIES OTHER THAN THOSE DEPICTED ON THIS CERTIFICATION FORM.



- R/W = Right of Way
- N.T.S. = Not to Scale
- POC = Precast Concrete
- COND. = Conduit
- CONC. = Concrete
- O.D. = Outside Diameter
- C.I. = Cast Iron
- D.I. = Ductile Iron
- RPC = Rough Pore Concrete
- CL = Cast Stone
- T.C. = Trench Cable
- PLAS. = Plastic
- BL. = Base Line
- ELCC. = Electric
- TELE. = Telephone
- T.H. = Test Hole
- SW = Storm
- DW = Driveway
- BM = Benchmark
- C.B. = Catch Basin
- GV = Gas Valve
- Storm Manhole
- Test Hole
- Fire Hydrant
- Pipe
- Fence Line
- Electric Meters
- T.S. = Tension Station
- Valve
- Water Meter
- Telephone Manhole
- Telephone Pedestal

- 8" = 1"
- 16" = 2"
- 24" = 3"
- 36" = 4"
- 48" = 6"
- 60" = 8"
- 72" = 9"
- 84" = 10"
- 96" = 11"
- 108" = 12"
- 120" = 13"
- 132" = 14"
- 144" = 15"
- 156" = 16"
- 168" = 17"
- 180" = 18"
- 192" = 19"
- 204" = 20"
- 216" = 21"
- 228" = 22"
- 240" = 23"
- 252" = 24"
- 264" = 25"
- 276" = 26"
- 288" = 27"
- 300" = 28"
- 312" = 29"
- 324" = 30"
- 336" = 31"
- 348" = 32"
- 360" = 33"
- 372" = 34"
- 384" = 35"
- 396" = 36"
- 408" = 37"
- 420" = 38"
- 432" = 39"
- 444" = 40"
- 456" = 41"
- 468" = 42"
- 480" = 43"
- 492" = 44"
- 504" = 45"
- 516" = 46"
- 528" = 48"
- 540" = 49"
- 552" = 50"
- 564" = 51"
- 576" = 52"
- 588" = 53"
- 600" = 54"
- 612" = 55"
- 624" = 56"
- 636" = 57"
- 648" = 58"
- 660" = 59"
- 672" = 60"
- 684" = 61"
- 696" = 62"
- 708" = 63"
- 720" = 64"
- 732" = 65"
- 744" = 66"
- 756" = 67"
- 768" = 68"
- 780" = 69"
- 792" = 70"
- 804" = 71"
- 816" = 72"
- 828" = 73"
- 840" = 74"
- 852" = 75"
- 864" = 76"
- 876" = 77"
- 888" = 78"
- 900" = 79"
- 912" = 80"
- 924" = 81"
- 936" = 82"
- 948" = 83"
- 960" = 84"
- 972" = 85"
- 984" = 86"
- 996" = 87"
- 1008" = 88"
- 1020" = 89"
- 1032" = 90"
- 1044" = 91"
- 1056" = 92"
- 1068" = 93"
- 1080" = 94"
- 1092" = 95"
- 1104" = 96"
- 1116" = 97"
- 1128" = 98"
- 1140" = 99"
- 1152" = 100"



The Subsurface Util. Engineering Company  
449 Monroe Falls Road  
Tallmadge, OH 44278  
(330) 794-4455

### So-Deep Test Hole Certification Form

© So-Deep 1988, 1991

So-Deep, Corporate Office  
8397 Euclid Avenue  
Manassas Park, VA 20111  
(703)361-6005

City, County, State: CITY OF MORRIS, IL  
Gen. Loc.: DIVISION ST. JUST S OF NORTH ST.  
Recorded Size/Material/Type: 8" UNK. TYPE (C.O.M.) WATER LINE  
Foreman/Trucker/Form By: J. CLINE / 218 / P. REYNOLDS

Condition of paving prior to work: CONC. CURB IN GOOD CONDITION  
Control # 818433  
Test Hole # 8  
Plan Scale 1"=20'  
Sheet # 3  
Proposed STORM X-ING  
Date MAY 12, 2008

B.M. 1 Elev. = 528.58'  
is GIVEN  
Description: (BM #104) CHIS "X" FOUND, NE CAP BOLT OF F.H., 40" RT OF CL STA 21+386, ILL. RTE. 47

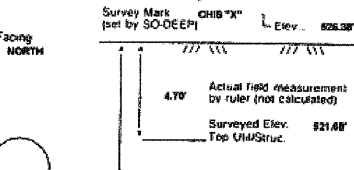
B.M. 2 Elev. = 527.41'  
is GIVEN  
Description: (BM #105) TOP OF NAIL FOUND, IN L.P., 43" LT OF CL STA 19+992, ILL. RTE. 47

SO-DEEP will attempt to use the B.M. #1 most applicable to your design. If however, B.M. #1 is more than 25' bearing differences exist, please design controls.

Benchmarks check BY GUY  
Elevations are referenced to B.M.#1

Benchmarks check BY GUY  
Elevations are referenced to B.M.#1

Recorded Size/Type of utility WAS FOUND  
There WERE NOT additional utilities in the test hole  
The utility WAS in good condition.  
Paving Thickness and type 14" CONCRETE  
Color of ribbon installed BLUE  
Soil Type MOIST SAND  
Field Condition CONCRETE CURB  
T.H. led to CHIS "X"



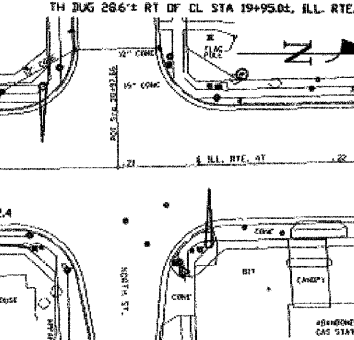
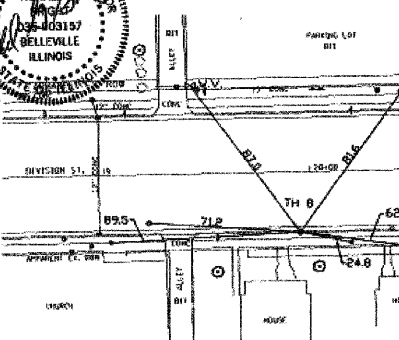
Actual field measurement by ruler (not calculated)  
Surveyed Elev. 521.48'  
Top Util/Struc.  
Surveyed Elev. 521.48'  
Bot. Util/Struc. (if required)

Remarks: NOTE: ADDITIONAL UTILITIES LIE IN CLOSE PROXIMITY TO THIS TEST HOLE. REFER TO 518433, T.H. #5.

Remarks: NOTE: ADDITIONAL UTILITIES LIE IN CLOSE PROXIMITY TO THIS TEST HOLE. REFER TO 518433, T.H. #5.

PREPARED WITHOUT A/T&T RECORDS. WE ACCEPT NO LIABILITY FOR FACILITIES OTHER THAN THOSE DEPICTED ON THIS CERTIFICATION FORM.

PREPARED WITHOUT A/T&T RECORDS. WE ACCEPT NO LIABILITY FOR FACILITIES OTHER THAN THOSE DEPICTED ON THIS CERTIFICATION FORM.



- R/W = Right of Way
- N.T.S. = Not to Scale
- POC = Precast Concrete
- COND. = Conduit
- CONC. = Concrete
- O.D. = Outside Diameter
- C.I. = Cast Iron
- D.I. = Ductile Iron
- RPC = Rough Pore Concrete
- CL = Cast Stone
- T.C. = Trench Cable
- PLAS. = Plastic
- BL. = Base Line
- ELCC. = Electric
- TELE. = Telephone
- T.H. = Test Hole
- SW = Storm
- DW = Driveway
- BM = Benchmark
- C.B. = Catch Basin
- GV = Gas Valve
- Storm Manhole
- Test Hole
- Fire Hydrant
- Pipe
- Fence Line
- Electric Meters
- T.S. = Tension Station
- Valve
- Water Meter
- Telephone Manhole
- Telephone Pedestal

- 8" = 1"
- 16" = 2"
- 24" = 3"
- 36" = 4"
- 48" = 6"
- 60" = 8"
- 72" = 9"
- 84" = 10"
- 96" = 11"
- 108" = 12"
- 120" = 13"
- 132" = 14"
- 144" = 15"
- 156" = 16"
- 168" = 17"
- 180" = 18"
- 192" = 19"
- 204" = 20"
- 216" = 21"
- 228" = 22"
- 240" = 23"
- 252" = 24"
- 264" = 25"
- 276" = 26"
- 288" = 27"
- 300" = 28"
- 312" = 29"
- 324" = 30"
- 336" = 31"
- 348" = 32"
- 360" = 33"
- 372" = 34"
- 384" = 35"
- 396" = 36"
- 408" = 37"
- 420" = 38"
- 432" = 39"
- 444" = 40"
- 456" = 41"
- 468" = 42"
- 480" = 43"
- 492" = 44"
- 504" = 45"
- 516" = 46"
- 528" = 48"
- 540" = 49"
- 552" = 50"
- 564" = 51"
- 576" = 52"
- 588" = 53"
- 600" = 54"
- 612" = 55"
- 624" = 56"
- 636" = 57"
- 648" = 58"
- 660" = 59"
- 672" = 60"
- 684" = 61"
- 696" = 62"
- 708" = 63"
- 720" = 64"
- 732" = 65"
- 744" = 66"
- 756" = 67"
- 768" = 68"
- 780" = 69"
- 792" = 70"
- 804" = 71"
- 816" = 72"
- 828" = 73"
- 840" = 74"
- 852" = 75"
- 864" = 76"
- 876" = 77"
- 888" = 78"
- 900" = 79"
- 912" = 80"
- 924" = 81"
- 936" = 82"
- 948" = 83"
- 960" = 84"
- 972" = 85"
- 984" = 86"
- 996" = 87"
- 1008" = 88"
- 1020" = 89"
- 1032" = 90"
- 1044" = 91"
- 1056" = 92"
- 1068" = 93"
- 1080" = 94"
- 1092" = 95"
- 1104" = 96"
- 1116" = 97"
- 1128" = 98"
- 1140" = 99"
- 1152" = 100"

City, County, State: CITY OF MORRIS, IL  
Gen. Loc.: DIVISION ST. JUST S OF NORTH ST.  
Recorded Size/Material/Type: 8" WAY UNK. TYPE (A/T&T) TELE. DUCT  
Foreman/Trucker/Form By: J. CLINE / 218 / P. REYNOLDS

Condition of paving prior to work: NO PAVING  
Control # 818433  
Test Hole # 9  
Plan Scale 1"=20'  
Sheet # 3  
Proposed STORM X-ING  
Date MAY 12, 2008

B.M. 1 Elev. = 528.58'  
is GIVEN  
Description: (BM #104) CHIS "X" FOUND, NE CAP BOLT OF F.H., 40" RT OF CL STA 21+386, ILL. RTE. 47

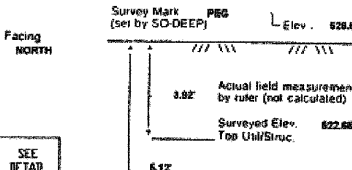
B.M. 2 Elev. = 527.41'  
is GIVEN  
Description: (BM #105) TOP OF NAIL FOUND, IN L.P., 43" LT OF CL STA 19+992, ILL. RTE. 47

SO-DEEP will attempt to use the B.M. #1 most applicable to your design. If however, B.M. #1 is more than 25' bearing differences exist, please design controls.

Benchmarks check BY GUY  
Elevations are referenced to B.M.#1

Benchmarks check BY GUY  
Elevations are referenced to B.M.#1

Recorded Size/Type of utility WAS FOUND  
There WERE NOT additional utilities in the test hole.  
The utility WAS in good condition.  
Paving Thickness and type NO PAVING  
Color of ribbon installed ORANGE  
Soil Type MOIST SAND  
Field Condition GRASS RW  
T.H. led to PEG



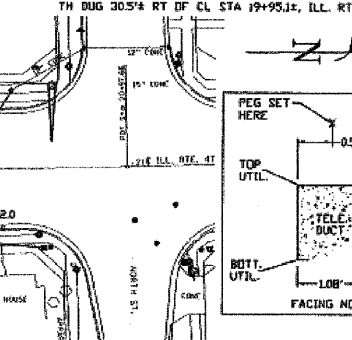
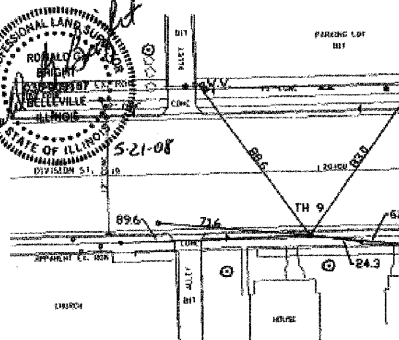
Actual field measurement by ruler (not calculated)  
Surveyed Elev. 522.58'  
Top Util/Struc.  
Surveyed Elev. 521.51'  
Bot. Util/Struc. (if required)

Remarks: NOTE: ADDITIONAL UTILITIES LIE IN CLOSE PROXIMITY TO THIS TEST HOLE. REFER TO 518433, T.H. #6.

Remarks: NOTE: ADDITIONAL UTILITIES LIE IN CLOSE PROXIMITY TO THIS TEST HOLE. REFER TO 518433, T.H. #6.

PREPARED WITHOUT A/T&T RECORDS. WE ACCEPT NO LIABILITY FOR FACILITIES OTHER THAN THOSE DEPICTED ON THIS CERTIFICATION FORM.

PREPARED WITHOUT A/T&T RECORDS. WE ACCEPT NO LIABILITY FOR FACILITIES OTHER THAN THOSE DEPICTED ON THIS CERTIFICATION FORM.



- R/W = Right of Way
- N.T.S. = Not to Scale
- POC = Precast Concrete
- COND. = Conduit
- CONC. = Concrete
- O.D. = Outside Diameter
- C.I. = Cast Iron
- D.I. = Ductile Iron
- RPC = Rough Pore Concrete
- CL = Cast Stone
- T.C. = Trench Cable
- PLAS. = Plastic
- BL. = Base Line
- ELCC. = Electric
- TELE. = Telephone
- T.H. = Test Hole
- SW = Storm
- DW = Driveway
- BM = Benchmark
- C.B. = Catch Basin
- GV = Gas Valve
- Storm Manhole
- Test Hole
- Fire Hydrant
- Pipe
- Fence Line
- Electric Meters
- T.S. = Tension Station
- Valve
- Water Meter
- Telephone Manhole
- Telephone Pedestal

- 8" = 1"
- 16" = 2"
- 24" = 3"
- 36" = 4"
- 48" = 6"
- 60" = 8"
- 72" = 9"
- 84" = 10"
- 96" = 11"
- 108" = 12"
- 120" = 13"
- 132" = 14"
- 144" = 15"
- 156" = 16"
- 168" = 17"
- 180" = 18"
- 192" = 19"
- 204" = 20"
- 216" = 21"
- 228" = 22"
- 240" = 23"
- 252" = 24"
- 264" = 25"
- 276" = 26"
- 288" = 27"
- 300" = 28"
- 312" = 29"
- 324" = 30"
- 336" = 31"
- 348" = 32"
- 360" = 33"
- 372" = 34"
- 384" = 35"
- 396" = 36"
- 408" = 37"
- 420" = 38"
- 432" = 39"
- 444" = 40"
- 456" = 41"
- 468" = 42"
- 480" = 43"
- 492" = 44"
- 504" = 45"
- 516" = 46"
- 528" = 48"
- 540" = 49"
- 552" = 50"
- 564" = 51"
- 576" = 52"
- 588" = 53"
- 600" = 54"
- 612" = 55"
- 624" = 56"
- 636" = 57"
- 648" = 58"
- 660" = 59"
- 672" = 60"
- 684" = 61"
- 696" = 62"
- 708" = 63"
- 720" = 64"
- 732" = 65"
- 744" = 66"
- 756" = 67"
- 768" = 68"
- 780" = 69"
- 792" = 70"
- 804" = 71"
- 816" = 72"
- 828" = 73"
- 840" = 74"
- 852" = 75"
- 864" = 76"
- 876" = 77"
- 888" = 78"
- 900" = 79"
- 912" = 80"
- 924" = 81"
- 936" = 82"
- 948" = 83"
- 960" = 84"
- 972" = 85"
- 984" = 86"
- 996" = 87"
- 1008" = 88"
- 1020" = 89"
- 1032" = 90"
- 1044" = 91"
- 1056" = 92"
- 1068" = 93"
- 1080" = 94"
- 1092" = 95"
- 1104" = 96"
- 1116" = 97"
- 1128" = 98"
- 1140" = 99"
- 1152" = 100"

REVISIONS	
NAME	DATE

ILLINOIS DEPARTMENT OF TRANSPORTATION  
SUBSURFACE UTILITY ENGINEERING TEST HOLES  
SCALE: NONE  
DATE: 09/2007  
DRAWN BY: KHH  
CHECKED BY: FML