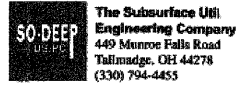


F.A.P. RTE.	SECTION	COUNTY	TOTAL SHEETS	SHEET NO.
326	(111CS) W&RS-21	GRUNDY	85	85-0
STA. TO STA.			FED. ROAD DIST. NO. ILLINOIS FED. AID PROJECT	



### So-Deep Test Hole Certification Form

So-Deep, Corporate Office  
8397 Euclid Avenue  
Manassas Park, VA 20111  
(703)361-6005  
Control # 818433  
Test Hole # 19  
Plan Scale 1"=20'  
Sheet # 3  
Proposed Date STORM X-RING  
MAY 8, 2008

City, County, State CITY OF MORRIS, IL  
Gen. Loc. DIVISION ST., JUST N OF NORTH ST.  
Recorded Size/Material/Type 8" C.I. (C.O.M.) WATER LINE  
Foreman/Truck#/Form By J. CLINE / 219 / P. REYNOLDS

Condition of paving prior to work  
ASP. RWY. IN GOOD CONDITION

B.M. 1 Elev. = 528.58'  
is GIVEN  
B.M. 2 Elev. = 527.41'  
is GIVEN

Description: (BM #104) CHS "X" FOUND, NE CAP BOLT OF F.H. 49 1/2 RT OF CL STA 21+95.2, ILL. RTE. 47  
Description: (BM #105) TOP OF NAL FOUND, IN L.P., 43 1/2 LT OF CL STA 24+75.2, ILL. RTE. 47

SO-DEEP will attempt to use the B.M.#1 most appropriate to your design. If however, B.M.#1 differ by more than .05, resulting differences could cause design conflicts.

Benchmarks check BY B.M.#1  
Elevations are referenced to B.M.#1

Recorded Size/Type of utility WAS FOUND

There WERE NOT additional utilities in the test hole.

The utility WAS in good condition.

Paving Thickness and type 4" ASPHALT

Color of ribbon installed BLUE

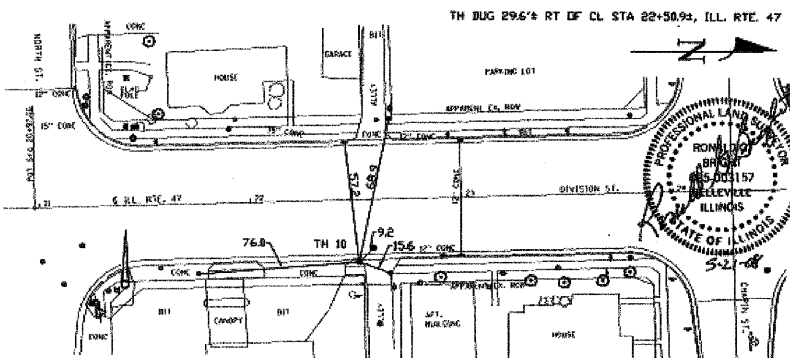
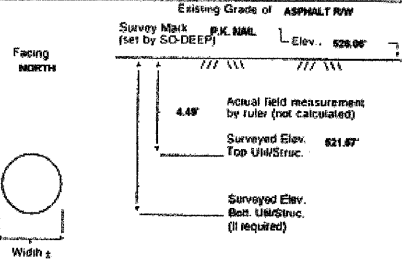
Soil Type MOIST SAND

Field Condition ASPHALT RWY

T.H. tied to P.K. NAIL

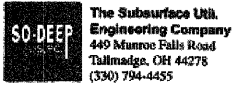
8" C.I. (C.O.M.) WATER LINE  
Size/Material/Type  
Portion of pipe exposed for O.D. measurement  
FULL

Remarks: NOTE: ADDITIONAL UTILITIES LIE IN CLOSE PROXIMITY TO THIS TEST HOLE. REFER TO SILB433, T.H. #11.



NW = Right of Way	T.C. = Test Collar	10" = 1"	SW = Sewer Manhole
N.T.S. = Not to Scale	PLAS. = Plastic	10" = 2"	TH = Test Hole
PC = Precast Concrete	BL. = Bare Line	20" = 3"	PH = Fire Hydrant
CONC. = Concrete	ELEC. = Electric	30" = 4"	P = Pole
C.I. = Cast Iron	TELE. = Telephone	42" = 6"	F.L. = Fence Line
O.D. = Outside Diameter	TR. = Test Hole	50" = 8"	E.M. = Electric Manhole
C.I. = Cast Iron	SW = Sidewalk	50" = 7"	T.S. = Transfer Station
D.L. = Double Line	DW = Driveway	57" = 9"	V = Valve
RFC = Rough Four Concrete	BM = Benchmark	75" = 9"	WM = Water Manhole
CL = Cast/Line	C.B. = Catch Basin	82" = 10"	TM = Telephone Manhole
	GV = Gas Valve	92" = 11"	TP = Telephone Padstand

Performing out-of-sight work...with vision!<sup>SM</sup>  
Note: To eliminate mistakes and check this work, So-Deep suggests you scale and plot all dimensions onto the plans and review all elevations carefully. So-Deep is responsible only for information shown on our forms.



### So-Deep Test Hole Certification Form

So-Deep, Corporate Office  
8397 Euclid Avenue  
Manassas Park, VA 20111  
(703)361-6005  
Control # 818433  
Test Hole # 11  
Plan Scale 1"=20'  
Sheet # 3  
Proposed Date STORM X-RING  
MAY 8, 2008

City, County, State CITY OF MORRIS, IL  
Gen. Loc. DIVISION ST., JUST N OF NORTH ST.  
Recorded Size/Material/Type 3" W&V UNK. TYPE (AT&T) TELE. DUCT  
Foreman/Truck#/Form By J. CLINE / 219 / P. REYNOLDS

Condition of paving prior to work  
CONC. SIDEWALK GOOD CONDITION

B.M. 1 Elev. = 528.58'  
is GIVEN  
B.M. 2 Elev. = 527.41'  
is GIVEN

Description: (BM #104) CHS "X" FOUND, NE CAP BOLT OF F.H. 49 1/2 RT OF CL STA 21+95.2, ILL. RTE. 47  
Description: (BM #105) TOP OF NAL FOUND, IN L.P., 43 1/2 LT OF CL STA 24+75.2, ILL. RTE. 47

SO-DEEP will attempt to use the B.M.#1 most appropriate to your design. If however, B.M.#1 differ by more than .05, resulting differences could cause design conflicts.

Benchmarks check BY B.M.#1  
Elevations are referenced to B.M.#1

Recorded Size/Type of utility WAS FOUND

There WERE NOT additional utilities in the test hole.

The utility WAS in good condition.

Paving Thickness and type 4" CONCRETE

Color of ribbon installed ORANGE

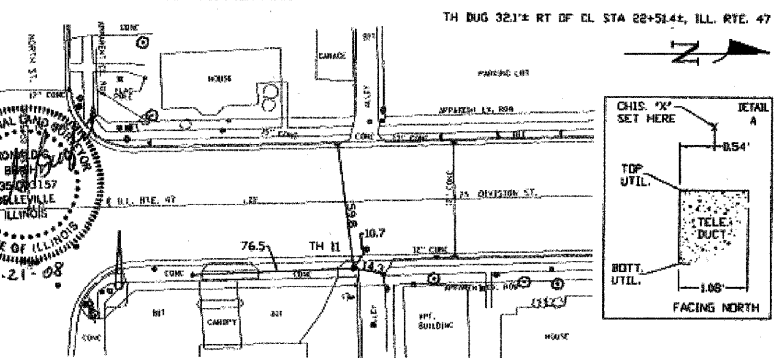
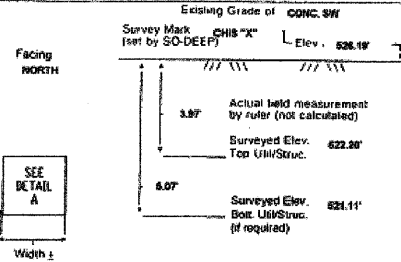
Soil Type MOIST SAND

Field Condition CONC. SIDEWALK

T.H. tied to CHS "X"

1.00" H. PRECAST CEMENT (AT&T) TELE. DUCT  
Size/Material/Type  
Portion of pipe exposed for O.D. measurement  
N/A

Remarks: NOTE: ADDITIONAL UTILITIES LIE IN CLOSE PROXIMITY TO THIS TEST HOLE. REFER TO SILB433, T.H. #11.



NW = Right of Way	T.C. = Test Collar	10" = 1"	SW = Sewer Manhole
N.T.S. = Not to Scale	PLAS. = Plastic	10" = 2"	TH = Test Hole
PC = Precast Concrete	BL. = Bare Line	20" = 3"	PH = Fire Hydrant
CONC. = Concrete	ELEC. = Electric	30" = 4"	P = Pole
C.I. = Cast Iron	TELE. = Telephone	42" = 6"	F.L. = Fence Line
O.D. = Outside Diameter	TR. = Test Hole	50" = 8"	E.M. = Electric Manhole
C.I. = Cast Iron	SW = Sidewalk	50" = 7"	T.S. = Transfer Station
D.L. = Double Line	DW = Driveway	57" = 9"	V = Valve
RFC = Rough Four Concrete	BM = Benchmark	75" = 9"	WM = Water Manhole
CL = Cast/Line	C.B. = Catch Basin	82" = 10"	TM = Telephone Manhole
	GV = Gas Valve	92" = 11"	TP = Telephone Padstand

Performing out-of-sight work...with vision!<sup>SM</sup>  
Note: To eliminate mistakes and check this work, So-Deep suggests you scale and plot all dimensions onto the plans and review all elevations carefully. So-Deep is responsible only for information shown on our forms.



### So-Deep Test Hole Certification Form

So-Deep, Corporate Office  
8397 Euclid Avenue  
Manassas Park, VA 20111  
(703)361-6005  
Control # 818433  
Test Hole # 12  
Plan Scale 1"=20'  
Sheet # 3  
Proposed Date STORM X-RING  
MAY 8, 2008

City, County, State CITY OF MORRIS, IL  
Gen. Loc. DIVISION ST., JUST S OF CHAPIN ST.  
Recorded Size/Material/Type 3" W&V UNK. TYPE (AT&T) F.O. TELE. DUCT  
Foreman/Truck#/Form By J. CLINE / 219 / P. REYNOLDS

Condition of paving prior to work  
NO PAVING

B.M. 1 Elev. = 528.58'  
is GIVEN  
B.M. 2 Elev. = 527.41'  
is GIVEN

Description: (BM #104) CHS "X" FOUND, NE CAP BOLT OF F.H. 49 1/2 RT OF CL STA 21+95.2, ILL. RTE. 47  
Description: (BM #105) TOP OF NAL FOUND, IN L.P., 43 1/2 LT OF CL STA 24+75.2, ILL. RTE. 47

SO-DEEP will attempt to use the B.M.#1 most appropriate to your design. If however, B.M.#1 differ by more than .05, resulting differences could cause design conflicts.

Benchmarks check BY B.M.#1  
Elevations are referenced to B.M.#1

Recorded Size/Type of utility WAS FOUND

There WERE additional utilities in the test hole.

The utility WAS in good condition.

Paving Thickness and type NO PAVING

Color of ribbon installed ORANGE

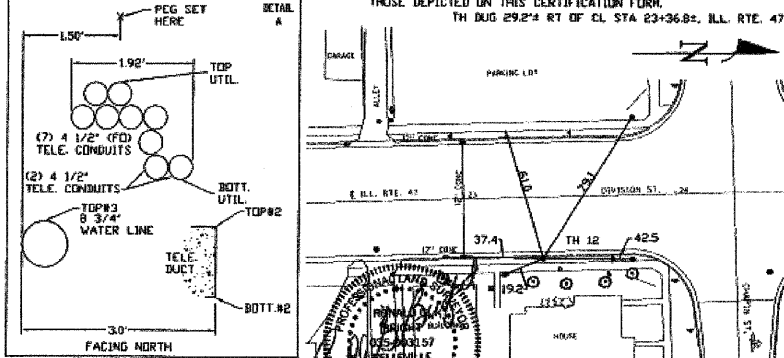
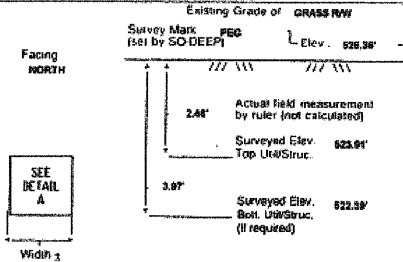
Soil Type MOIST SAND

Field Condition GRASS RWY

T.H. tied to PEG

(7) 4 1/2" PLASTIC (AT&T) F.O. TELE. CONDUITS  
Size/Material/Type  
Portion of pipe exposed for O.D. measurement  
N/A

Remarks: CREW FOUND A 1.1' H. PRECAST CEMENT (AT&T) TELE. DUCT, (2) 4 1/2" FRAGILE (AT&T) TELE. CONDUITS AND A 3" DIA. (C.O.M.) WATER LINE. ADDITIONAL PLASTIC TELE. CONDUITS MAY BE PRESENT BUT LIE HIDDEN FROM VIEW.



NW = Right of Way	T.C. = Test Collar	10" = 1"	SW = Sewer Manhole
N.T.S. = Not to Scale	PLAS. = Plastic	10" = 2"	TH = Test Hole
PC = Precast Concrete	BL. = Bare Line	20" = 3"	PH = Fire Hydrant
CONC. = Concrete	ELEC. = Electric	30" = 4"	P = Pole
C.I. = Cast Iron	TELE. = Telephone	42" = 6"	F.L. = Fence Line
O.D. = Outside Diameter	TR. = Test Hole	50" = 8"	E.M. = Electric Manhole
C.I. = Cast Iron	SW = Sidewalk	50" = 7"	T.S. = Transfer Station
D.L. = Double Line	DW = Driveway	57" = 9"	V = Valve
RFC = Rough Four Concrete	BM = Benchmark	75" = 9"	WM = Water Manhole
CL = Cast/Line	C.B. = Catch Basin	82" = 10"	TM = Telephone Manhole
	GV = Gas Valve	92" = 11"	TP = Telephone Padstand

Performing out-of-sight work...with vision!<sup>SM</sup>  
Note: To eliminate mistakes and check this work, So-Deep suggests you scale and plot all dimensions onto the plans and review all elevations carefully. So-Deep is responsible only for information shown on our forms.

REVISIONS	
NAME	DATE

ILLINOIS DEPARTMENT OF TRANSPORTATION  
SUBSURFACE UTILITY  
ENGINEERING  
TEST HOLES  
SCALE: NONE  
DATE: 09/2007  
DRAWN BY: KHH  
CHECKED BY: FML