

F.A.P. SECTION COUNTY TOTAL SHEET
326 (111CS) W&RS-21 GRUNDY 85 85-H
STA. TO STA.
FED. ROAD DIST. NO. ILLINOIS FED. AID PROJECT



So-Deep Test Hole Certification Form

© So-Deep 1988, 1991

So-Deep, Corporate Office
8397 Euclid Avenue
Manassas Park, VA 20111
(703)361-6005
Control # SRB433
Test Hole # 106
Plan Scale 1"=20'
Sheet # 2
Proposed STORM X-ING
Date JULY 14, 2008

City, County, State CITY OF MORRIS, IL
Gen. Loc. DIVISION ST NORTH OF MAIN ST
Recorded Size/Material/Type 8" UNK. TYPE (A/T) TELE. DUCT
Foreman/Truck/Form By J. CLINE / 219 / P. REYNOLDS

Condition of paving prior to work NO PAVING

B.M. 1 Elev = 624.81'
is GIVEN
Description: (BM #102) TOP OF RR SPIKE FOUND IN L.P., 37'4" LT OF STA. 13+97.5, DIVISION ST.
B.M. 2 Elev = 618.16'
is GIVEN
Description: (BM #101) CHIS "X" FOUND NE CAP BOLT OF F.H., 39'2" RT OF STA. 11+482, DIVISION ST.

SO-DEEP will attempt to use the BHPI most applicable to your design. If generic, BHPI data by more than .05, making differences would cause design conflicts.

Benchmarks check BY 6.00"
Elevations are referenced to B.M.#1

Recorded Size/Type of utility WAS FOUND

There WERE additional utilities in the test hole.

The utility WAS in good condition.

Paving Thickness and type NO PAVING

Color of ribbon installed ORANGE & RED

Soil Type MOIST SAND & GRAVEL

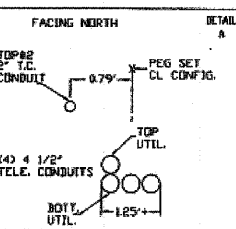
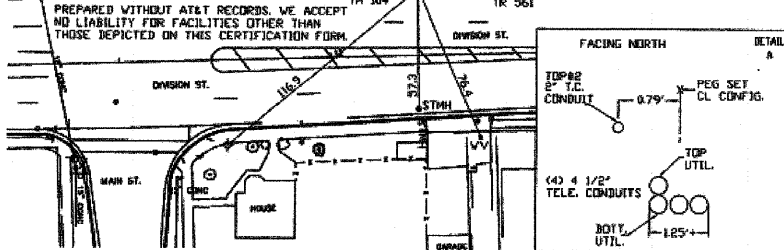
Field Condition GRASS RW

T.H. tied to PEG

(4) 4 1/2" PLA (A/T) TELE. CONDUITS 6.00" H"
Size/Material/Type
Portion of pipe exposed for O.D. measurement:
N/A

Remarks: ALSO FOUND IN TEST HOLE A 2" STEEL (80#) TRAFFIC CONTROL CONDUIT RUNNING ABOVE & PARALLEL TO THE (4) PLASTIC TELE. CONDUITS. NOTE: (2) OF THE (4) CONDUITS EXCAVATED WERE FOUND TO BE BROKEN OR CUT AT THIS LOCATION. THE CREW COULD NOT OBTAIN AN ACCURATE BOTTOM ELEVATION, WIDTH OR ACCURATE CONDUIT COUNT DUE TO UNSTABLE GROUND CONDITIONS IN THE TEST HOLE. TOP SIDE SURVEY, ELECTRONIC OBSERVATION AND UTILITY RECORDS RESEARCH ALL INDICATE THE TEST HOLE WAS DUG ON THE CORRECT UTILITY. TELE. DUCT CONTAINS FIBER OPTICS AT THIS LOCATION.

PREPARED WITHOUT A/T RECORDS. WE ACCEPT NO LIABILITY FOR FACILITIES OTHER THAN THOSE DEPICTED ON THIS CERTIFICATION FORM.



<p>R/W = Right of Way N.T.S. = Not To Scale P.C. = Precast Concrete CONC. = Concrete C.D. = Cast Iron D.I. = Ductile Iron R.P.C. = Rough Pave Concrete CL = Catch</p> <p>T.C. = Terra Cotta PLAS. = Plastic BL. = Brass Line ELCC. = Electric TELE. = Telephone T.H. = Test Hole SW = Sewer DW = Driveway BM = Benchmark C.B. = Catch Basin GV = Gas Valve</p> <p>6" = 1" 16" = 2" 20" = 2" 24" = 4" 36" = 6" 42" = 7" 48" = 8" 60" = 10" 72" = 12" 84" = 14" 96" = 16"</p> <p>Sewer Manhole Test Hole Fire Hydrant Pole Face Line Electric Manhole + T.S. = Tension Station Valve Water Meter Telephone Manhole Telephone Pedestal</p>	<p> </p> <p>Performing out-of-sight work... with vision! Note: To eliminate mistakes and check this work, So-Deep suggests you walk and plot all dimensions onto the plans and review all elevations carefully. So-Deep is responsible only for information shown on our forms.</p>
---	---



So-Deep Test Hole Certification Form

© So-Deep 1988, 1991

So-Deep, Corporate Office
8397 Euclid Avenue
Manassas Park, VA 20111
(703)361-6005
Control # SRB433
Test Hole # 106
Plan Scale 1"=20'
Sheet # 2
Proposed GRADE CHANGE
Date JULY 15, 2008

City, County, State CITY OF MORRIS, IL
Gen. Loc. DIVISION ST NORTH OF MAIN ST
Recorded Size/Material/Type UNK. SIZE & TYPE FUNCTION UTILITY
Foreman/Truck/Form By J. CLINE / 219 / P. REYNOLDS

Condition of paving prior to work CONC. GUTTER IN GOOD CONDITION

B.M. 1 Elev = 624.81'
is GIVEN
Description: (BM #102) TOP OF RR SPIKE FOUND IN L.P., 37'4" LT OF STA. 13+97.5, DIVISION ST.
B.M. 2 Elev = 618.16'
is GIVEN
Description: (BM #101) CHIS "X" FOUND NE CAP BOLT OF F.H., 39'2" RT OF STA. 11+482, DIVISION ST.

SO-DEEP will attempt to use the BHPI most applicable to your design. If generic, BHPI data by more than .05, making differences would cause design conflicts.

Benchmarks check BY 6.00"
Elevations are referenced to B.M.#1

Recorded Size/Type of utility WAS FOUND

There WERE NOT additional utilities in the test hole.

The utility WAS NOT in good condition. SEE REMARKS

Paving Thickness and type 8" CONCRETE

Color of ribbon installed BLUE

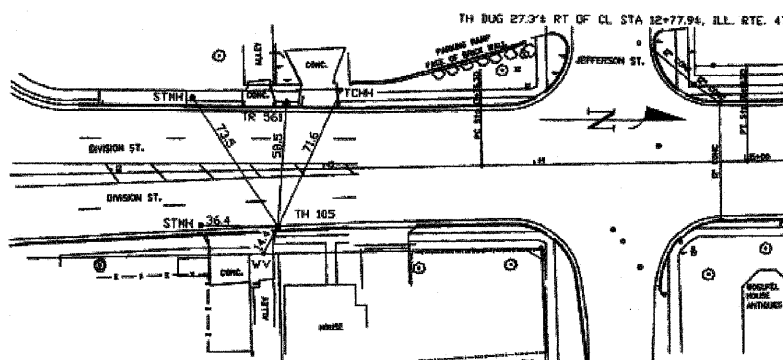
Soil Type CLAY & ROCK

Field Condition CONCRETE GUTTER

T.H. tied to CHIS "X"

6 1/2" CORRUGATED METALLIC UNK. FUNCTION PIPE
Size/Material/Type
Portion of pipe exposed for O.D. measurement:
FULL

Remarks: THE CREW COULD NOT DETERMINE THE FUNCTION OF THE 6 1/2" CORRUGATED METALLIC PIPE. THE CREW ALSO COULD NOT DETERMINE THE EXACT MATERIAL TYPE OF THE 6 1/2" PIPE DUE TO THE CORROSION.



<p>R/W = Right of Way N.T.S. = Not To Scale P.C. = Precast Concrete CONC. = Concrete C.D. = Cast Iron D.I. = Ductile Iron R.P.C. = Rough Pave Concrete CL = Catch</p> <p>T.C. = Terra Cotta PLAS. = Plastic BL. = Brass Line ELCC. = Electric TELE. = Telephone T.H. = Test Hole SW = Sewer DW = Driveway BM = Benchmark C.B. = Catch Basin GV = Gas Valve</p> <p>6" = 1" 16" = 2" 20" = 2" 24" = 4" 36" = 6" 42" = 7" 48" = 8" 60" = 10" 72" = 12" 84" = 14" 96" = 16"</p> <p>Sewer Manhole Test Hole Fire Hydrant Pole Face Line Electric Manhole + T.S. = Tension Station Valve Water Meter Telephone Manhole Telephone Pedestal</p>	<p>Performing out-of-sight work... with vision! Note: To eliminate mistakes and check this work, So-Deep suggests you walk and plot all dimensions onto the plans and review all elevations carefully. So-Deep is responsible only for information shown on our forms.</p>
---	--



So-Deep Test Hole Certification Form

© So-Deep 1988, 1991

So-Deep, Corporate Office
8397 Euclid Avenue
Manassas Park, VA 20111
(703)361-6005
Control # SRB433
Test Hole # 106
Plan Scale 1"=20'
Sheet # 2
Proposed STORM X-ING
Date JULY 15, 2008

City, County, State CITY OF MORRIS, IL
Gen. Loc. DIVISION ST NORTH OF MAIN ST
Recorded Size/Material/Type 8" UNK. TYPE (C.O.M.) WATER LINE
Foreman/Truck/Form By J. CLINE / 219 / P. REYNOLDS

Condition of paving prior to work NO PAVING

B.M. 1 Elev = 624.81'
is GIVEN
Description: (BM #102) TOP OF RR SPIKE FOUND IN L.P., 37'4" LT OF STA. 13+97.5, DIVISION ST.
B.M. 2 Elev = 618.16'
is GIVEN
Description: (BM #101) CHIS "X" FOUND NE CAP BOLT OF F.H., 39'2" RT OF STA. 11+482, DIVISION ST.

SO-DEEP will attempt to use the BHPI most applicable to your design. If generic, BHPI data by more than .05, making differences would cause design conflicts.

Benchmarks check BY 6.00"
Elevations are referenced to B.M.#1

Recorded Size/Type of utility WAS FOUND

There WERE NOT additional utilities in the test hole.

The utility WAS in good condition.

Paving Thickness and type NO PAVING

Color of ribbon installed BLUE

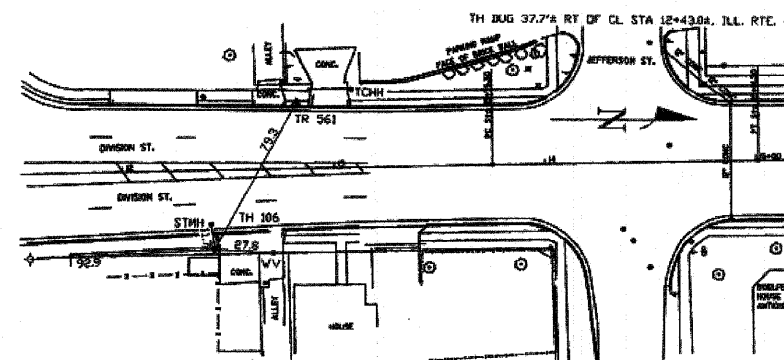
Soil Type CLAY & ROCK

Field Condition GRASS RW

T.H. tied to PEG

8 3/4" D.I. WATER LINE
Size/Material/Type
Portion of pipe exposed for O.D. measurement:
FULL

Remarks: NONE



<p>R/W = Right of Way N.T.S. = Not To Scale P.C. = Precast Concrete CONC. = Concrete C.D. = Cast Iron D.I. = Ductile Iron R.P.C. = Rough Pave Concrete CL = Catch</p> <p>T.C. = Terra Cotta PLAS. = Plastic BL. = Brass Line ELCC. = Electric TELE. = Telephone T.H. = Test Hole SW = Sewer DW = Driveway BM = Benchmark C.B. = Catch Basin GV = Gas Valve</p> <p>6" = 1" 16" = 2" 20" = 2" 24" = 4" 36" = 6" 42" = 7" 48" = 8" 60" = 10" 72" = 12" 84" = 14" 96" = 16"</p> <p>Sewer Manhole Test Hole Fire Hydrant Pole Face Line Electric Manhole + T.S. = Tension Station Valve Water Meter Telephone Manhole Telephone Pedestal</p>	<p>Performing out-of-sight work... with vision! Note: To eliminate mistakes and check this work, So-Deep suggests you walk and plot all dimensions onto the plans and review all elevations carefully. So-Deep is responsible only for information shown on our forms.</p>
---	--

REVISIONS	NAME	DATE

ILLINOIS DEPARTMENT OF TRANSPORTATION
SUBSURFACE UTILITY ENGINEERING TEST HOLES
SCALE: NONE
DATE: 09/2007
DRAWN BY: KHH
CHECKED BY: FML