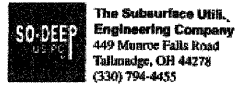


F.A.P. SECTION COUNTY TOTAL SHEET NO.
326 (111CS) W&RS-21 GRUNDY 85 85-1
STA. TO STA.
FED. ROAD DIST. NO. ILLINOIS FED. AID PROJECT



The Subsurface Utility Engineering Company
449 Monroe Falls Road
Tullahoma, OH 44278
(330) 794-4455

So-Deep Test Hole Certification Form

© So-Deep 1988, 1991

So-Deep, Corporate Office
8397 Euclid Avenue
Manassas Park, VA 20111
(703)361-6005
Control # SLB433
Test Hole # 109
Plan Scale 1"=20'
Sheet # 2
Proposed CURB & GUTTER
Date JULY 14, 2009

City, County, State CITY OF MORRIS, IL
Gen. Loc. SW CORNER DIVISION ST & JEFFERSON ST
Recorded Size/Material/Type 8-WAY UNK. TYPE (AT&T) TELE DUCT
Foreman/Truck/Form By J. CLINE / 219 / P. REYNOLDS

Condition of paving prior to work CONCR. SW IN GOOD CONDITION

B.M. 1 Elev. - 524.81' is GIVEN Description: (BM #102) TOP OF RR SPIKE FOUND IN L.P., ST# LT OF STA. 13+97.2, DIVISION ST.
B.M. 2 Elev. - 618.15' is GIVEN Description: (BM #101) CHS "X" FOUND NE CAP BOLT OF F.H., 39 1/2 FT OF STA. 11+48.2, DIVISION ST.

SO-DEEP will attempt to use the B.M. most applicable to your design. If however, B.M. differ by more than .05', resulting differences could cause design conflicts.

Benchmarks check BY GDT Elevations are referenced to B.M.#1

Recorded Size/Type of utility WAS FOUND

There WERE NOT additional utilities in the test hole.

The utility WAS in good condition.

Paving Thickness and type 4" CONCRETE

Color of ribbon installed ORANGE

Soil Type MOIST SAND

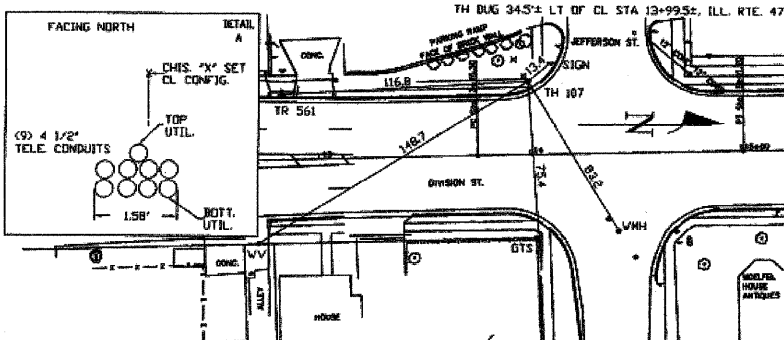
Field Condition CONCRETE SW

T.H. tied to CHS "X"

(8) 4 1/2" PLA. (AT&T) TELE. CONDUITS 0.58' H.
Size/Material/Type
Portion of pipe exposed for O.D. measurement:
N/A

Remarks: TELE. DUCT CONTAINS FIBER OPTICS AT THIS LOCATION.

PREPARED WITHOUT AT&T RECORDS, WE ACCEPT NO LIABILITY FOR FACILITIES OTHER THAN THOSE DEPICTED ON THIS CERTIFICATION FORM.



- R/W = Right of Way
- N.T.S. = Not to Scale
- PL = Not Shown on Plan
- PC = Precast Concrete
- COND = Conduit
- COND. = Concrete
- O.D. = Outside Diameter
- C.I. = Cast Iron
- D.I. = Ductile Iron
- RPC = Rough Pore Concrete
- CL = Caststone
- T.C. = Terra Cotta
- PLAS. = Plastic
- BL = Base Line
- ELEC. = Electric
- TELE. = Telephone
- T.A. = Test Hole
- ZM = Zoned
- DW = Ditchway
- SM = Sewer Manhole
- C.B. = Catch Basin
- GV = Gas Valve
- SM = Sewer Manhole
- F.H. = Fire Hydrant
- Pole
- Fence Line
- Electric Manhole
- T.S. = Transit Station
- Valve
- Water Meter
- Telephone Manhole
- Telephone Pedestal
- SM = Sewer Manhole
- T.H. = Test Hole
- F.H. = Fire Hydrant
- Pole
- Fence Line
- Electric Manhole
- T.S. = Transit Station
- Valve
- Water Meter
- Telephone Manhole
- Telephone Pedestal

Paul R. Cole
Performing out-of-sight work...with vision!SM
Note: To eliminate mistakes and check this work, So-Deep suggests you scale and plot all dimensions onto the plans and review all elevations carefully. So-Deep is responsible only for information shown on our forms.



The Subsurface Utility Engineering Company
449 Monroe Falls Road
Tullahoma, OH 44278
(330) 794-4455

So-Deep Test Hole Certification Form

© So-Deep 1988, 1991

So-Deep, Corporate Office
8397 Euclid Avenue
Manassas Park, VA 20111
(703)361-6005
Control # SLB433
Test Hole # 108
Plan Scale 1"=20'
Sheet # 2
Proposed CURB & GUTTER
Date JULY 14, 2009

City, County, State CITY OF MORRIS, IL
Gen. Loc. SW CORNER DIVISION ST & JEFFERSON ST
Recorded Size/Material/Type 6" STEEL (INCON) GAS LINE
Foreman/Truck/Form By J. CLINE / 219 / P. REYNOLDS

Condition of paving prior to work CONCR. SW IN GOOD CONDITION

B.M. 1 Elev. - 524.81' is GIVEN Description: (BM #102) TOP OF RR SPIKE FOUND IN L.P., ST# LT OF STA. 13+97.2, DIVISION ST.
B.M. 2 Elev. - 618.15' is GIVEN Description: (BM #101) CHS "X" FOUND NE CAP BOLT OF F.H., 39 1/2 FT OF STA. 11+48.2, DIVISION ST.

SO-DEEP will attempt to use the B.M. most applicable to your design. If however, B.M. differ by more than .05', resulting differences could cause design conflicts.

Benchmarks check BY GDT Elevations are referenced to B.M.#1

Recorded Size/Type of utility WAS FOUND

There WERE NOT additional utilities in the test hole.

The utility WAS in good condition.

Paving Thickness and type 4" CONCRETE

Color of ribbon installed YELLOW

Soil Type MOIST SAND

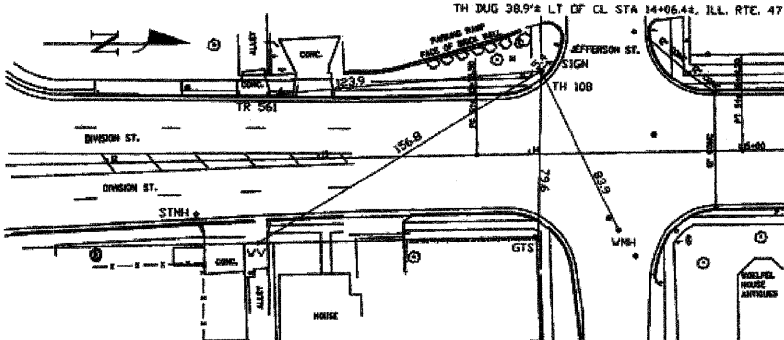
Field Condition CONCRETE SW

T.H. tied to CHS "X"

(6) 6" WRAPPED STEEL (INCON) GAS LINE
Size/Material/Type
Portion of pipe exposed for O.D. measurement:
FULL

Remarks: NONE

PREPARED WITHOUT AT&T RECORDS, WE ACCEPT NO LIABILITY FOR FACILITIES OTHER THAN THOSE DEPICTED ON THIS CERTIFICATION FORM.



- R/W = Right of Way
- N.T.S. = Not to Scale
- PL = Not Shown on Plan
- PC = Precast Concrete
- COND = Conduit
- COND. = Concrete
- O.D. = Outside Diameter
- C.I. = Cast Iron
- D.I. = Ductile Iron
- RPC = Rough Pore Concrete
- CL = Caststone
- T.C. = Terra Cotta
- PLAS. = Plastic
- BL = Base Line
- ELEC. = Electric
- TELE. = Telephone
- T.A. = Test Hole
- ZM = Zoned
- DW = Ditchway
- SM = Sewer Manhole
- C.B. = Catch Basin
- GV = Gas Valve
- SM = Sewer Manhole
- F.H. = Fire Hydrant
- Pole
- Fence Line
- Electric Manhole
- T.S. = Transit Station
- Valve
- Water Meter
- Telephone Manhole
- Telephone Pedestal
- SM = Sewer Manhole
- T.H. = Test Hole
- F.H. = Fire Hydrant
- Pole
- Fence Line
- Electric Manhole
- T.S. = Transit Station
- Valve
- Water Meter
- Telephone Manhole
- Telephone Pedestal

Paul R. Cole
Performing out-of-sight work...with vision!SM
Note: To eliminate mistakes and check this work, So-Deep suggests you scale and plot all dimensions onto the plans and review all elevations carefully. So-Deep is responsible only for information shown on our forms.



The Subsurface Utility Engineering Company
449 Monroe Falls Road
Tullahoma, OH 44278
(330) 794-4455

So-Deep Test Hole Certification Form

© So-Deep 1988, 1991

So-Deep, Corporate Office
8397 Euclid Avenue
Manassas Park, VA 20111
(703)361-6005
Control # SLB433
Test Hole # 108
Plan Scale 1"=20'
Sheet # 2
Proposed CURB & GUTTER
Date JULY 14, 2009

City, County, State CITY OF MORRIS, IL
Gen. Loc. SE CORNER JEFFERSON ST & DIVISION ST
Recorded Size/Material/Type UNK. SIZE & TYPE FUNCTION UTILITY
Foreman/Truck/Form By J. CLINE / 219 / P. REYNOLDS

Condition of paving prior to work ASPHALT RDWY IN GOOD CONDITION

B.M. 1 Elev. - 524.81' is GIVEN Description: (BM #102) TOP OF RR SPIKE FOUND IN L.P., ST# LT OF STA. 13+97.2, DIVISION ST.
B.M. 2 Elev. - 618.15' is GIVEN Description: (BM #101) CHS "X" FOUND NE CAP BOLT OF F.H., 39 1/2 FT OF STA. 11+48.2, DIVISION ST.

SO-DEEP will attempt to use the B.M. most applicable to your design. If however, B.M. differ by more than .05', resulting differences could cause design conflicts.

Benchmarks check BY GDT Elevations are referenced to B.M.#1

Recorded Size/Type of utility WAS FOUND

There WERE NOT additional utilities in the test hole.

The utility WAS NOT in good condition. SEE REMARKS

Paving Thickness and type 22" ASPHALT

Color of ribbon installed BLUE

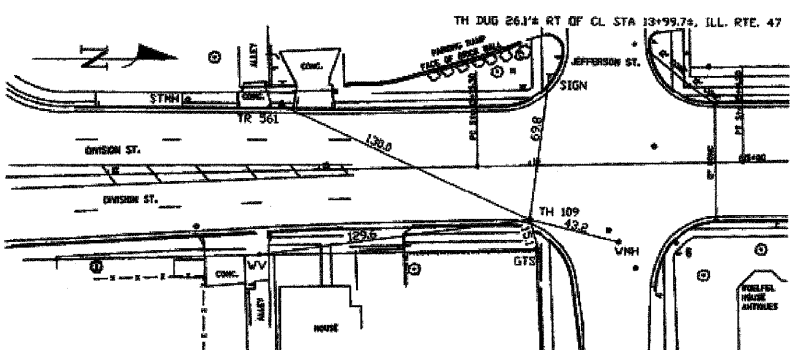
Soil Type CLAY & ROCK

Field Condition HEAVY RD. TRAFFIC

T.H. tied to P.K. MARK

(5) 1/2" CORRUGATED METALLIC UNK. FUNCTION PIPE
Size/Material/Type
Portion of pipe exposed for O.D. measurement:
FULL

Remarks: THE CREW COULD NOT DETERMINE THE FUNCTION OF THE 1/2" CORRUGATED METALLIC PIPE. THE CREW ALSO COULD NOT DETERMINE THE EXACT MATERIAL TYPE OF THE 5 1/2" PIPE DUE TO THE CORROSION.



- R/W = Right of Way
- N.T.S. = Not to Scale
- PL = Not Shown on Plan
- PC = Precast Concrete
- COND = Conduit
- COND. = Concrete
- O.D. = Outside Diameter
- C.I. = Cast Iron
- D.I. = Ductile Iron
- RPC = Rough Pore Concrete
- CL = Caststone
- T.C. = Terra Cotta
- PLAS. = Plastic
- BL = Base Line
- ELEC. = Electric
- TELE. = Telephone
- T.A. = Test Hole
- ZM = Zoned
- DW = Ditchway
- SM = Sewer Manhole
- C.B. = Catch Basin
- GV = Gas Valve
- SM = Sewer Manhole
- F.H. = Fire Hydrant
- Pole
- Fence Line
- Electric Manhole
- T.S. = Transit Station
- Valve
- Water Meter
- Telephone Manhole
- Telephone Pedestal
- SM = Sewer Manhole
- T.H. = Test Hole
- F.H. = Fire Hydrant
- Pole
- Fence Line
- Electric Manhole
- T.S. = Transit Station
- Valve
- Water Meter
- Telephone Manhole
- Telephone Pedestal

Paul R. Cole
Performing out-of-sight work...with vision!SM
Note: To eliminate mistakes and check this work, So-Deep suggests you scale and plot all dimensions onto the plans and review all elevations carefully. So-Deep is responsible only for information shown on our forms.

REVISIONS	
NAME	DATE

ILLINOIS DEPARTMENT OF TRANSPORTATION
SUBSURFACE UTILITY ENGINEERING TEST HOLES
SCALE: NONE
DATE: 09/2007
DRAWN BY: KHH
CHECKED BY: FML