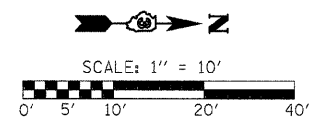
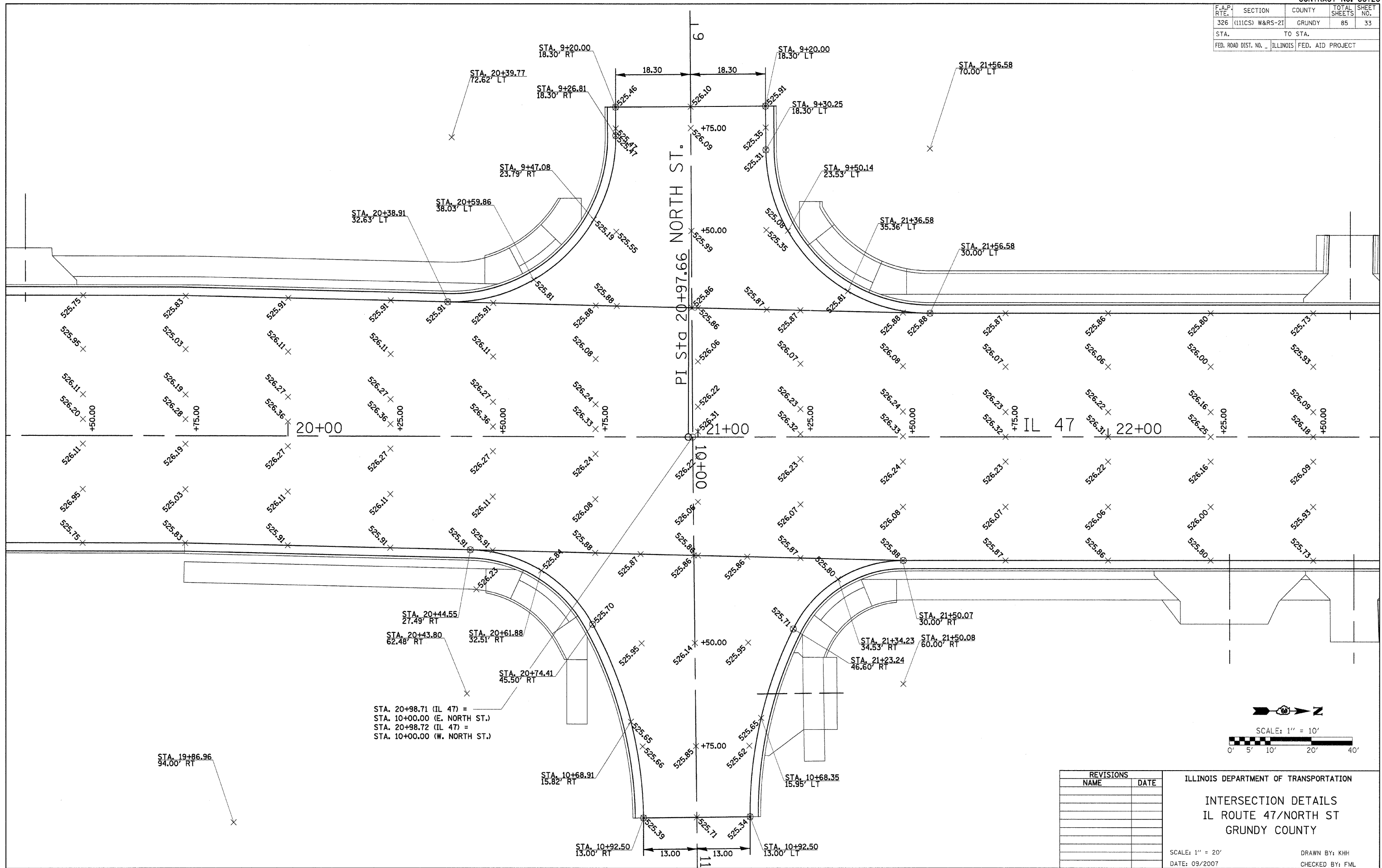


F.A.P. RTE.	SECTION	COUNTY	TOTAL SHEETS	SHEET NO.
326	(111CS) W&RS-2I	GRUNDY	85	33
STA.		TO STA.		
FED. ROAD DIST. NO. 1		ILLINOIS FED. AID PROJECT		



STA. 20+98.71 (IL 47) =
 STA. 10+00.00 (E. NORTH ST.)
 STA. 20+98.72 (IL 47) =
 STA. 10+00.00 (W. NORTH ST.)

REVISIONS	
NAME	DATE

ILLINOIS DEPARTMENT OF TRANSPORTATION
 INTERSECTION DETAILS
 IL ROUTE 47/NORTH ST
 GRUNDY COUNTY
 SCALE: 1" = 20'
 DATE: 09/2007
 DRAWN BY: KHH
 CHECKED BY: FML

INTERSECTION DETAILS - IL ROUTE 47 & NORTH ST.

PLOT DATE = #DATE\$
 FILE NAME = #FILEL\$
 PLOT SCALE = #SCALE\$
 USER NAME = #USER\$