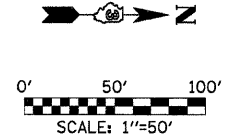
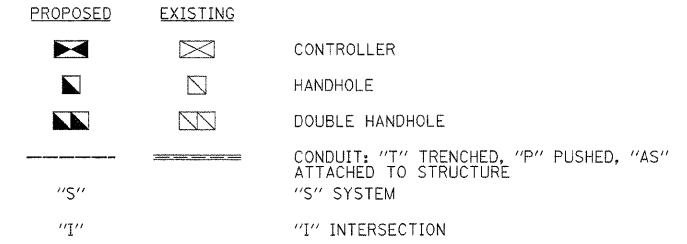


SCHEDULE OF QUANTITIES

DESCRIPTION	UNIT	QUANTITY
REMOVE EXISTING HANDHOLE	EACH	2
REMOVE EXISTING CONCRETE FOUNDATION	EACH	1
REMOVE EXISTING TRAFFIC SIGNAL EQUIPMENT	EACH	1
CONDUIT IN TRENCH, 2 INCH DIA., PVC	FT.	2738
CONDUIT IN TRENCH, 4 INCH DIA., PVC	FT.	10
CONDUIT PUSHED, 2 INCH DIA., PVC	FT.	1172
CONDUIT ATTACHED TO STRUCTURE, 2 INCH DIA., GALVANIZED STEEL	FT.	515
HANDHOLE, PORTLAND CEMENT CONCRETE	EACH	8
TRENCH AND BACKFILL FOR ELECTRICAL WORK	FT.	2748
JUNCTION BOX, STAINLESS STEEL, ATTACHED TO STRUCTURE, 24 IN. X 24 IN. X 10 IN.	EACH	8
MAINTENANCE OF EXISTING TRAFFIC SIGNAL INSTALLATION	EACH	5
RE-OPTIMIZE TRAFFIC SIGNAL SYSTEM	EACH	1
REMOVE ELECTRIC CABLE FROM CONDUIT	FT.	480
FULL-ACTUATED CONTROLLER, AND TYPE IV CABINET, SPECIAL	EACH	1
TRANSCIEVER - FIBER OPTIC	EACH	3
INDUCTIVE LOOP DETECTOR	EACH	8
LIGHTING CONTROLLER, SPECIAL	EACH	1
UNINTERRUPTABLE POWER SUPPLY	EACH	3
CONCRETE FOUNDATION, TYPE C	FOOT	6
FIBER OPTIC IN CONDUIT, NO. 62.5/125 MM12F SM12F	FT.	5220
SERVICE INSTALLATION TYPE B	EACH	1
ELECTRIC CABLE IN CONDUIT, SERVICE, NO.6, 2C	FT.	40
DRILL EXISTING HANDHOLE	EACH	12
TRACER CABLE NO. 14 1C	FT.	5220

INTERCONNECT PLAN LEGEND



REVISIONS	
NAME	DATE

ILLINOIS DEPARTMENT OF TRANSPORTATION

INTERCONNECT PLAN  
IL. RTE. 47 (DIVISION ST.)  
SHEET 1 OF 3

SCALE: 1"=50' DATE: JANUARY 2008

DRAWN BY: JVR  
CHECKED BY: FML