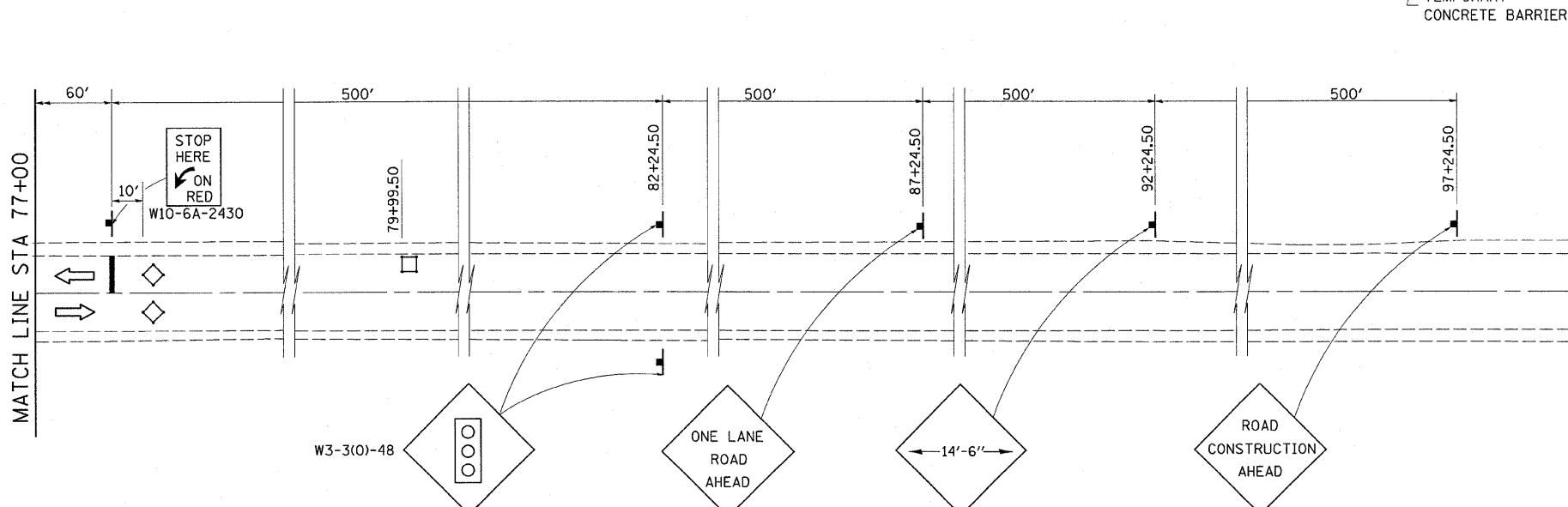
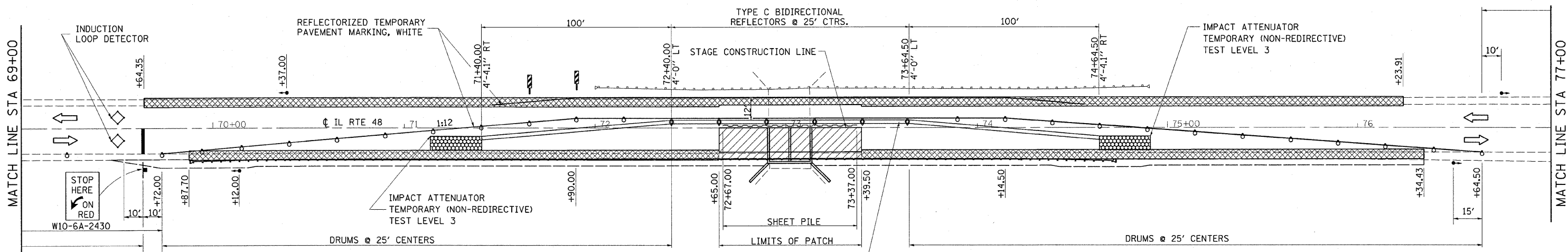
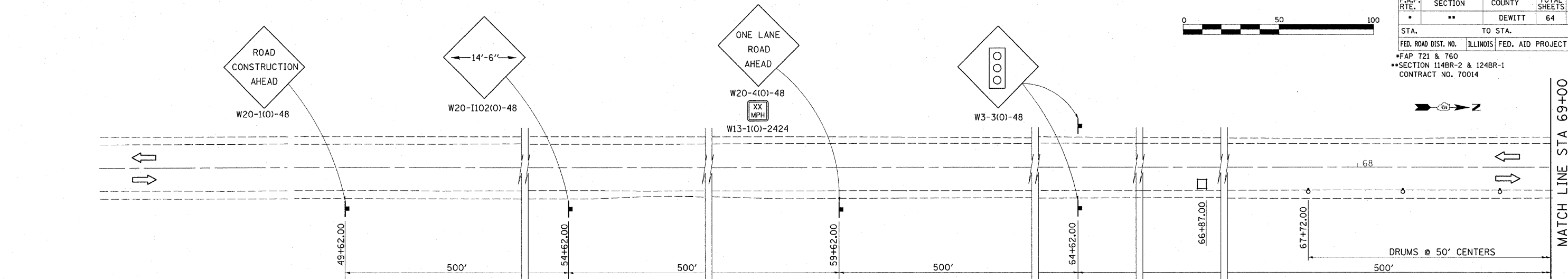
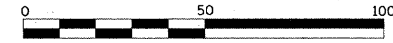
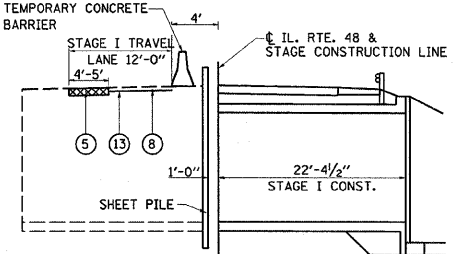


F.A.P. RTE.	SECTION	COUNTY	TOTAL SHEETS	SHEET NO.
	**	DEWITT	64	10
STA.	TO STA.			
FED. ROAD DIST. NO.	ILLINOIS FED. AID PROJECT			
*FAP 721 & 760				
**SECTION 114BR-2 & 124BR-1				
CONTRACT NO. 70014				



LEGEND

- WORK AREA
- BASE COURSE (OPTION) TO BE COMPLETED BEFORE STAGE I
- SIGN
- TRAFFIC SIGNAL
- INDUCTION LOOP DETECTOR
- DOUBLE VERTICAL PANEL
- TYPE II BARRICADES OR DRUMS WITH MONO-DIRECTIONAL STURDY BURNING LIGHTS
- TYPE C BIDIRECTIONAL REFLECTORS



TYPICAL SECTION STAGE CONSTRUCTION

NOTES

- (5) PROPOSED BASE COURSE (OPTION)
 - (8) PROPOSED HMA SURFACE COURSE, MIX "C", N 50, (168 LBS/SQ YD)
 - (13) PROPOSED HMA SURFACE REMOVAL, 1 1/2 "
- NOTE: PRIOR TO STAGE I MILL (1 1/2 ") AND RESURFACE STAGE I TRAVEL LANE STA 71+40.00 TO STA 74+64.50

NOTES:
 ALL SIGNAGE, SPACING, TRAFFIC CONTROL EQUIPMENT AND TEMPORARY PAVEMENT MARKINGS SHALL BE IN ACCORDANCE WITH THE LATEST VERSION OF HIGHWAY STANDARD 701321.
 ALL TEMPORARY BRIDGE TRAFFIC SIGNALS FOR STAGE I AND II WILL BE MEASURED AS 1 UNIT.
 RCA AND SIGNAL AHEAD SIGNS SHALL BE PLACED AT ANY SIDEROAD LOCATED WITHIN THE MAINLINE TRAFFIC CONTROL SIGNING LIMITS. THE LOCATIONS TO BE DETERMINED BY THE ENGINEER. THESE SIGNS WILL NOT BE MEASURED FOR PAYMENT, BUT WILL BE INCLUDED IN THE VARIOUS TRAFFIC CONTROL ITEMS.

REVISIONS	
NAME	DATE

ILLINOIS DEPARTMENT OF TRANSPORTATION
IL ROUTE 48
TRAFFIC CONTROL AND PROTECTION
STAGE I
 FAP 721 & 760
 SECTION 114BR-2 & 124BR-1
 DEWITT COUNTY

SCALE: _____
 DATE _____

DRAWN BY BANDY
 CHECKED BY STEUART