

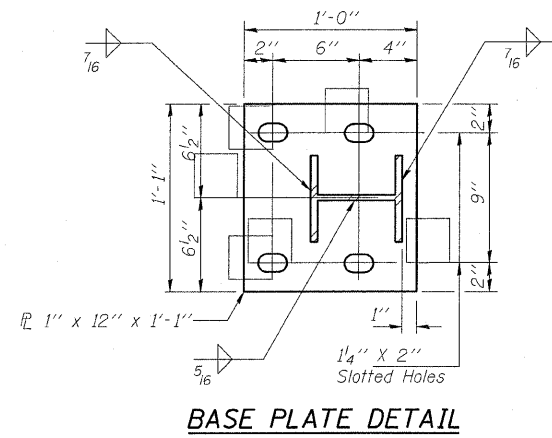
STATE OF ILLINOIS
DEPARTMENT OF TRANSPORTATION

ROUTE NO.	SECTION	COUNTY	TOTAL SHEETS	SHEET NO.
FAP 721	114BR-2	DEWITT	64	35
FED. ROAD DIST. NO. 6	ILLINOIS	FED. AID PROJECT-	CONTRACT NO. 70014	

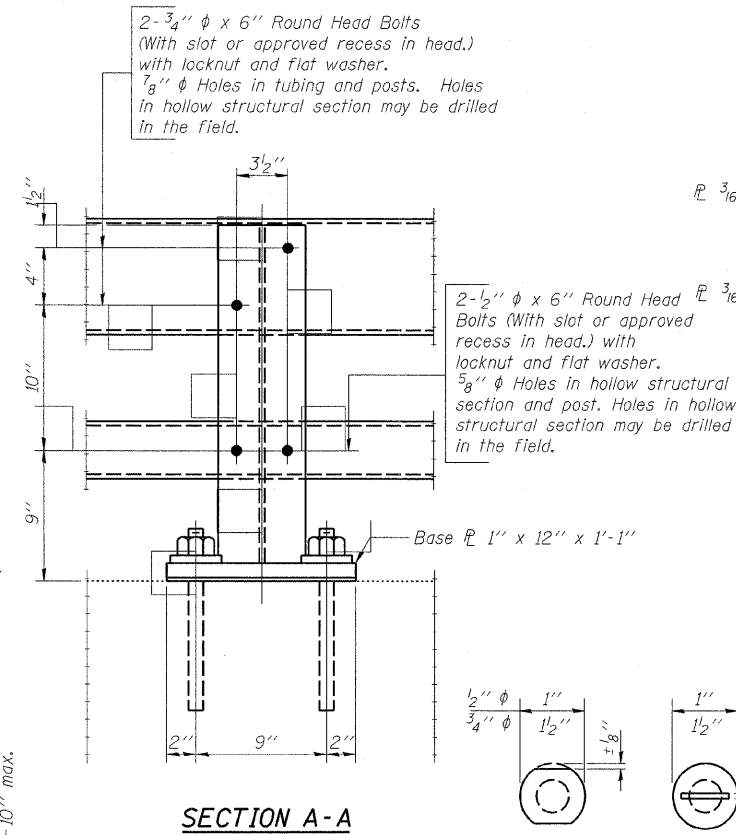
SHEET NO. 7 of
9 SHEETS

NOTES

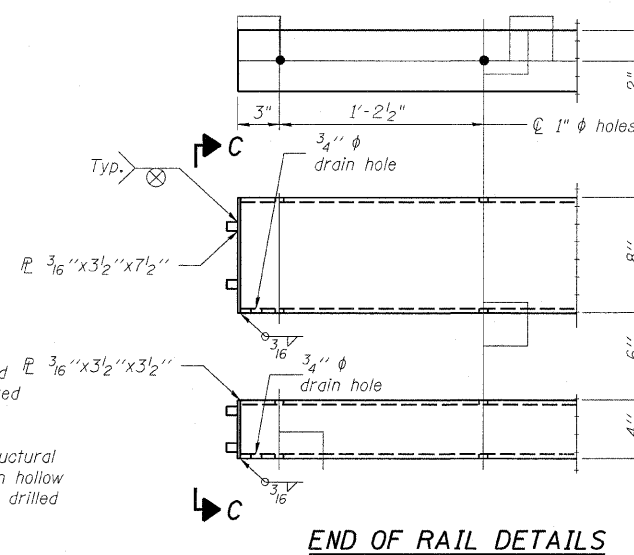
All field drilled holes shall be coated with an approved zinc rich paint before erection.
Posts shall not be located closer than 1'-3" to an existing bridge expansion joint or end of bridge.
Steel Bridge Rail expansion joint shall be provided between any two (2) posts which span a bridge expansion joint. Bolts located at expansion joint shall be provided with locknuts and shall be tightened only to a point that will allow railing movement.
Provide one 1/8" and two 1/16" steel shims for 25% of the posts. Shims shall be similar to base plates in size and holes.
All steel rail elements shall be galvanized according to Article 509.05 of the Standard Specifications.



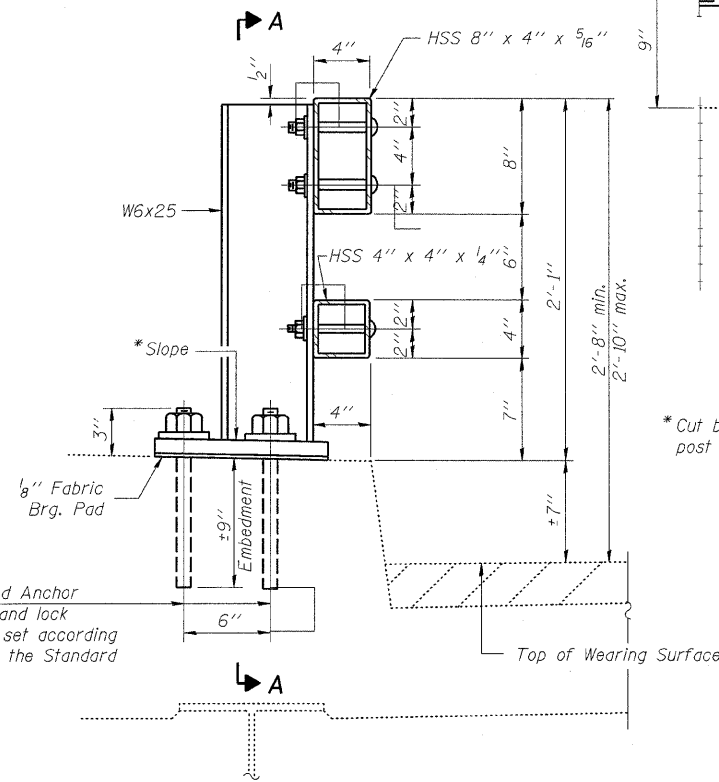
BASE PLATE DETAIL



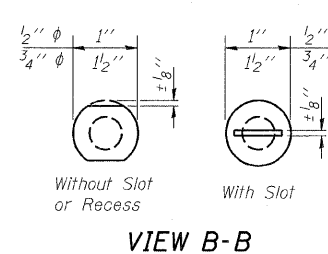
SECTION A-A



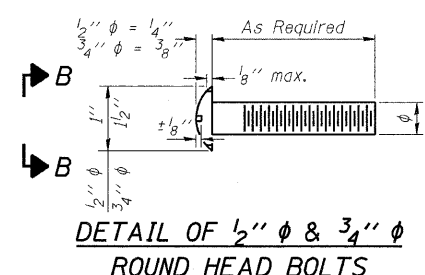
END OF RAIL DETAILS



SECTION AT RAIL POST

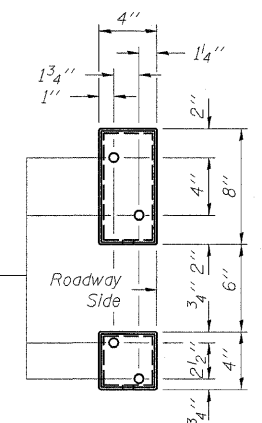


VIEW B-B

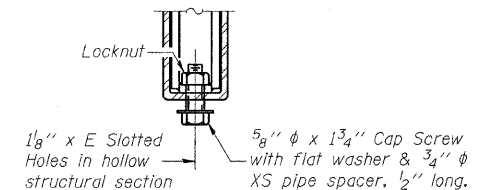


DETAIL OF 1/2" & 3/4" ROUND HEAD BOLTS

4 - 5/8" reduced base welded studs. Provide 4 - 5/8" washers and self-locking nuts or nuts and jam nuts for guardrail connection shown on Std. 631032



VIEW C-C



RAIL SPLICE CONNECTION AT EXPANSION JT.

4-1" φ H.S. Threaded Anchor Rods with hex nuts and lock washers, drilled and set according to Article 509.06 of the Standard Specifications.

BILL OF MATERIAL

Item	Unit	Quantity
Steel Railing, Type 2399	Foot	54

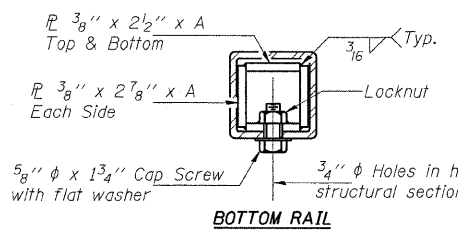
SPLICE DIMENSIONS

T	D	A	B	C	E
≤ 4"	2 1/2"	1'-8"	2"	4"	2 1/2"
> 4" ≤ 6 1/2"	3 3/4"	2'-0"	2 1/2"	5 1/2"	3 1/2"
> 6 1/2" ≤ 9"	5"	2'-4"	3 1/2"	6 1/2"	9"
> 9" ≤ 13"	7"	2'-10"	4 1/2"	8 1/2"	11"
Rail Splice	1 1/4"	1'-8"	2"	4"	—

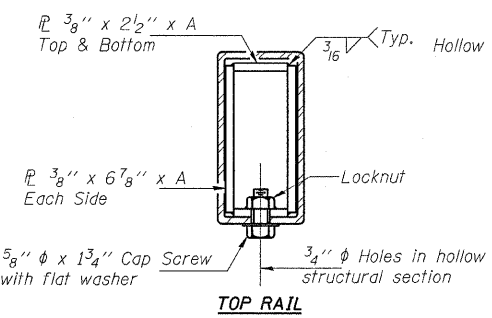
T = Total movement at expansion joint as shown on the design plans.

DESIGNED	BWB
CHECKED	MAA
DRAWN	PJP
CHECKED	BSC

R-31



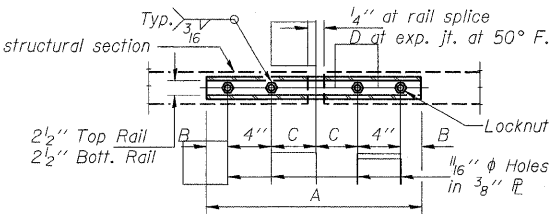
BOTTOM RAIL



TOP RAIL

SECTIONS AT RAIL SPLICE

(6'-3" Maximum Post Spacing)



PLANS PREPARED BY:

WOOLPERT
343 Fountains Parkway, Suite A
Fairview Heights, IL
62208-2044
618.632.7004
FAX: 618.632.0100

STATE OF ILLINOIS
DEPARTMENT OF TRANSPORTATION
IL ROUTE 10 OVER
FRIENDS CREEK DITCH
FAP 721 - SECTION 114BR-2
DEWITT COUNTY
STATION 673+93.40
STRUCTURE No. 020-2010
STEEL BRIDGE RAIL CURB MOUNTED (2399)