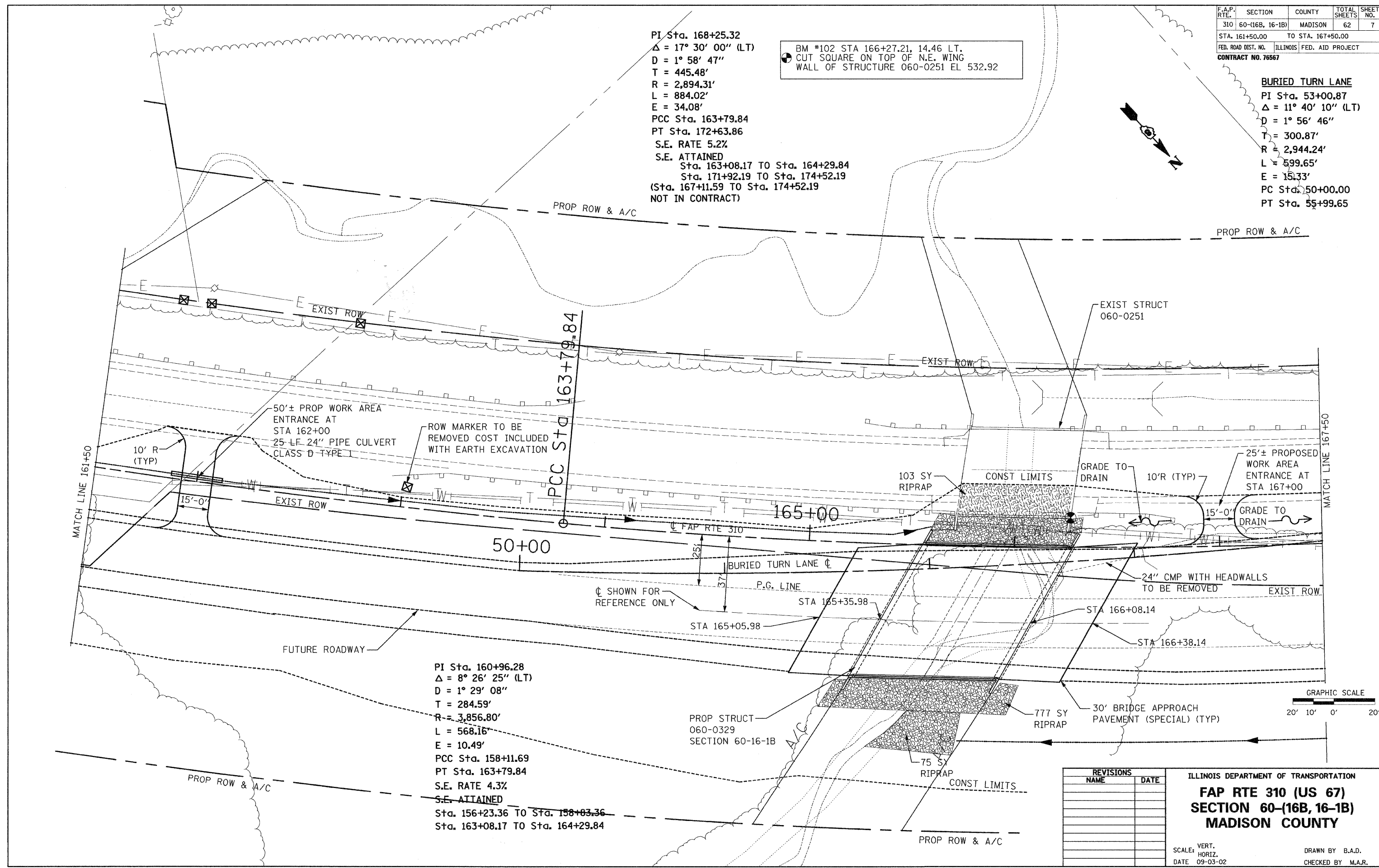


F.A.P. RTE.	SECTION	COUNTY	TOTAL SHEETS	SHEET NO.
310	60-(16B, 16-1B)	MADISON	62	7
STA. 161+50.00		TO STA. 167+50.00		
FED. ROAD DIST. NO.		ILLINOIS FED. AID PROJECT		
CONTRACT NO. 76567				

PI Sta. 168+25.32  
 $\Delta = 17^\circ 30' 00''$  (LT)  
 $D = 1^\circ 58' 47''$   
 $T = 445.48'$   
 $R = 2,894.31'$   
 $L = 884.02'$   
 $E = 34.08'$   
PCC Sta. 163+79.84  
PT Sta. 172+63.86  
S.E. RATE 5.2%  
S.E. ATTAINED  
Sta. 163+08.17 TO Sta. 164+29.84  
Sta. 171+92.19 TO Sta. 174+52.19  
(Sta. 167+11.59 TO Sta. 174+52.19  
NOT IN CONTRACT)

BM #102 STA 166+27.21, 14.46 LT.  
CUT SQUARE ON TOP OF N.E. WING  
WALL OF STRUCTURE 060-0251 EL 532.92

**BURIED TURN LANE**  
PI Sta. 53+00.87  
 $\Delta = 11^\circ 40' 10''$  (LT)  
 $D = 1^\circ 56' 46''$   
 $T = 300.87'$   
 $R = 2,944.24'$   
 $L = 599.65'$   
 $E = 15.33'$   
PC Sta. 50+00.00  
PT Sta. 55+99.65



PI Sta. 160+96.28  
 $\Delta = 8^\circ 26' 25''$  (LT)  
 $D = 1^\circ 29' 08''$   
 $T = 284.59'$   
 $R = 3,856.80'$   
 $L = 568.16'$   
 $E = 10.49'$   
PCC Sta. 158+11.69  
PT Sta. 163+79.84  
S.E. RATE 4.3%  
S.E. ATTAINED  
Sta. 156+23.36 TO Sta. 158+03.36  
Sta. 163+08.17 TO Sta. 164+29.84

REVISIONS	
NAME	DATE

ILLINOIS DEPARTMENT OF TRANSPORTATION  
**FAP RTE 310 (US 67)**  
**SECTION 60-(16B, 16-1B)**  
**MADISON COUNTY**

SCALE: VERT. \_\_\_\_\_  
HORIZ. \_\_\_\_\_  
DATE 09-03-02  
DRAWN BY B.A.D.  
CHECKED BY M.A.R.

