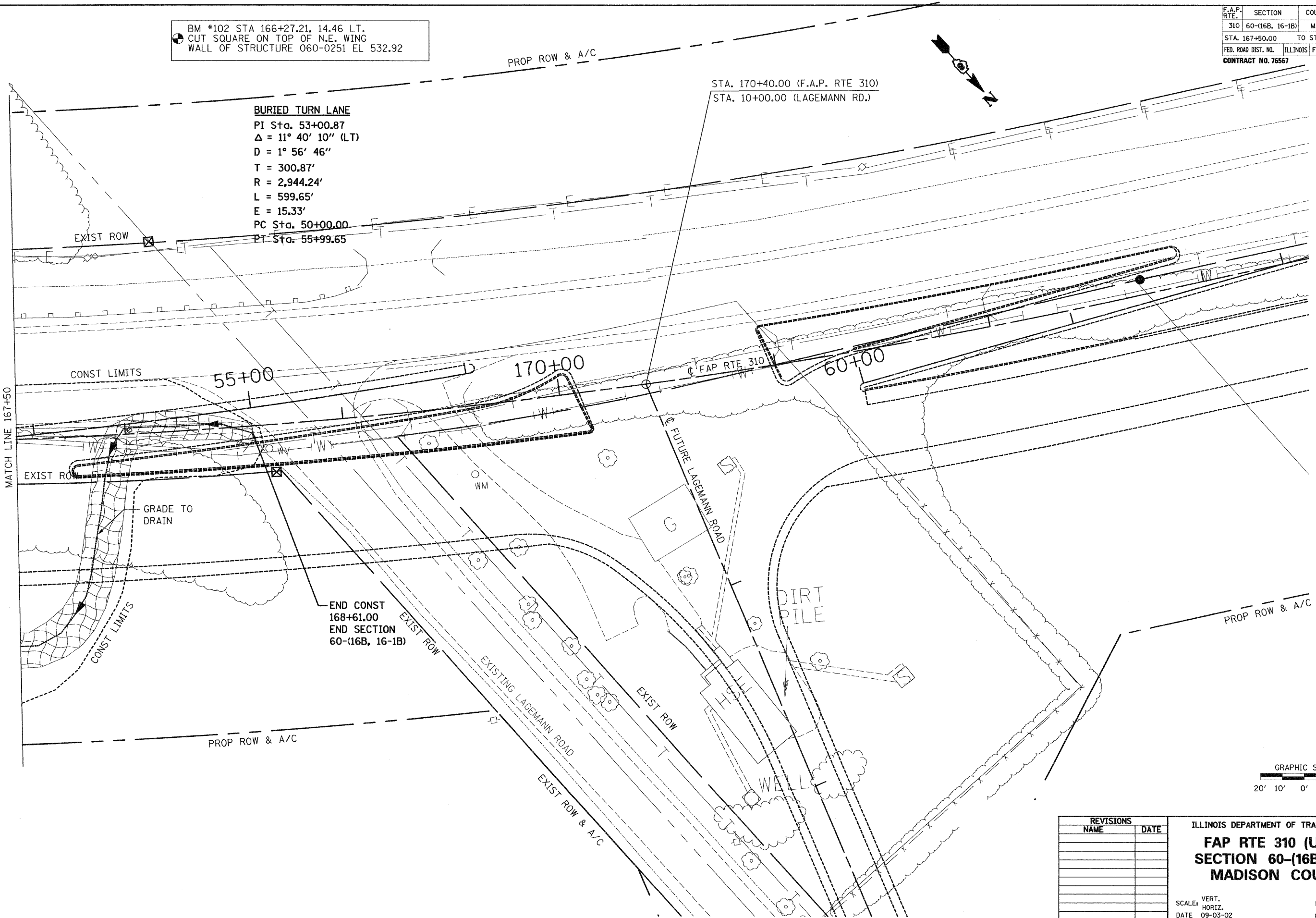


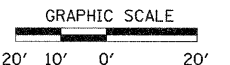
BM #102 STA 166+27.21, 14.46 LT.
 CUT SQUARE ON TOP OF N.E. WING
 WALL OF STRUCTURE 060-0251 EL 532.92

F.A.P. RTE.	SECTION	COUNTY	TOTAL SHEETS	SHEET NO.
310	60-(16B, 16-1B)	MADISON	62	8
STA. 167+50.00		TO STA. 168+61.00		
FED. ROAD DIST. NO.		ILLINOIS	FED. AID PROJECT	
CONTRACT NO. 76567				



BURIED TURN LANE
 PI Sta. 53+00.87
 $\Delta = 11^\circ 40' 10''$ (LT)
 $D = 1^\circ 56' 46''$
 $T = 300.87'$
 $R = 2,944.24'$
 $L = 599.65'$
 $E = 15.33'$
 PC Sta. 50+00.00
 PT Sta. 55+99.65

END CONST
 168+61.00
 END SECTION
 60-(16B, 16-1B)



REVISIONS	
NAME	DATE

ILLINOIS DEPARTMENT OF TRANSPORTATION
FAP RTE 310 (US 67)
SECTION 60-(16B, 16-1B)
MADISON COUNTY

SCALE: VERT. DRAWN BY B.A.D.
 HORIZ. CHECKED BY M.A.R.
 DATE 09-03-02