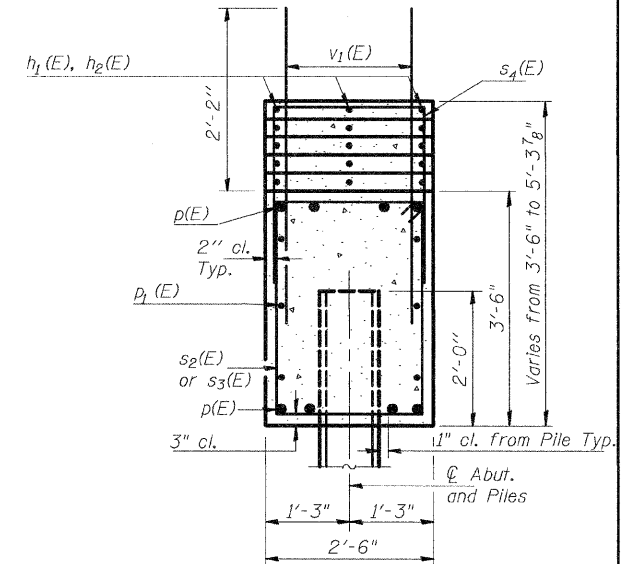
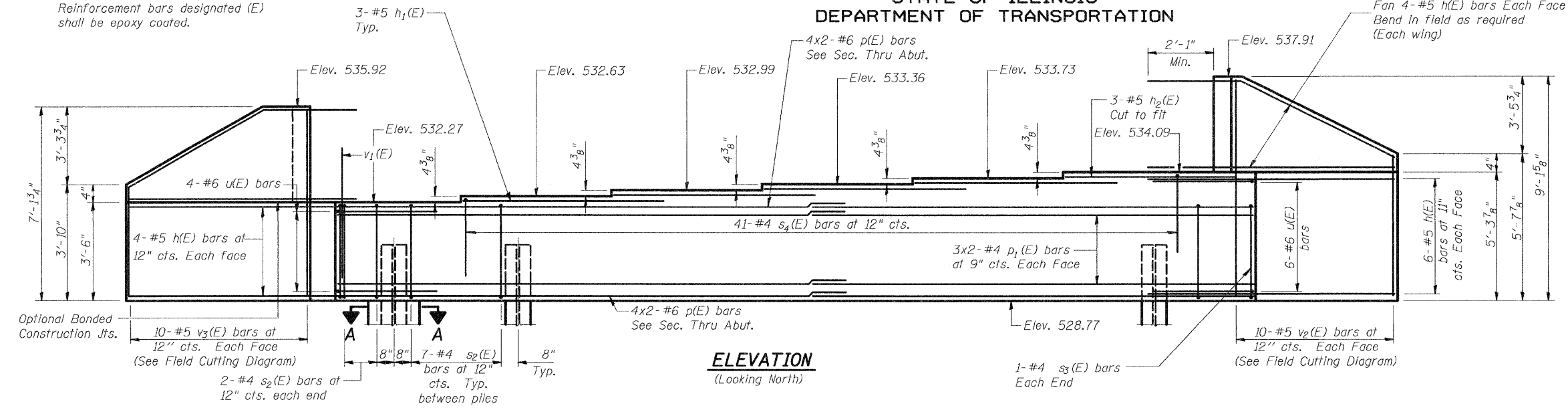


STATE OF ILLINOIS  
DEPARTMENT OF TRANSPORTATION

F.A.P. RTE.	SECTION	COUNTY	TOTAL SHEETS	SHEET NO.
310	60-(16B, 16-1B)	MADISON	62	28
STA. 160+24.00				
FED. ROAD DIST. NO.	ILLINOIS	FED. AID PROJECT		
CONTRACT NO. 76567				

Sheet No. 9  
12 Sheets

Notes: Pour steps monolithically with cap.  
Reinforcement bars designated (E)  
shall be epoxy coated.



**MIN. BAR LAP**

#4 BAR = 2'-5"  
#6 BAR = 3'-7"

Notes: Bars indicated thus 3x2-#6 etc. indicates  
3 lines of bars with 2 lengths per line.

**SEC. THRU ABUT.**

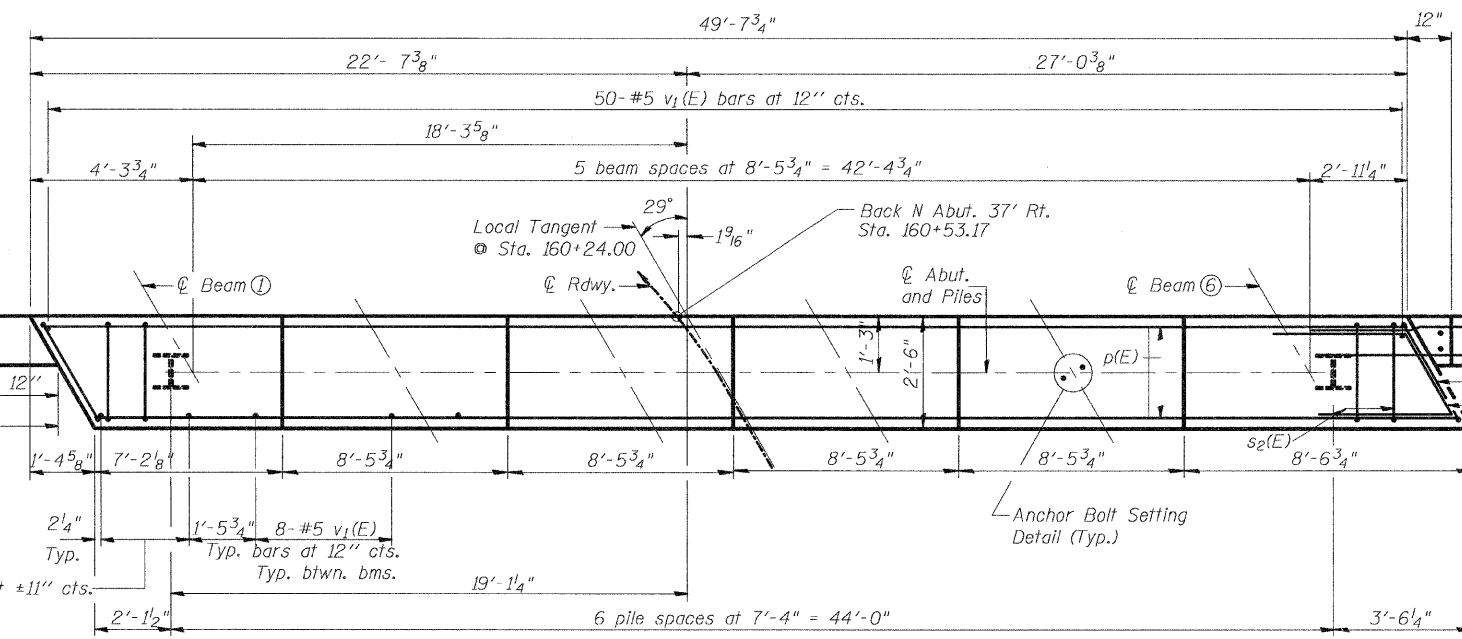
(Dimensions @ Right Angles)

**PILE DATA**

Type: HP12x53  
Nominal Required Bearing: 418 kips  
Allowable Resistance Available: 139 kips  
Est. Length: 36'  
No. Required: 7

The Steel H-Piles shall be according to  
AASHTO M270 Grade 50.

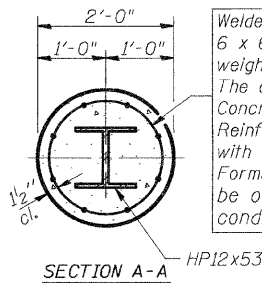
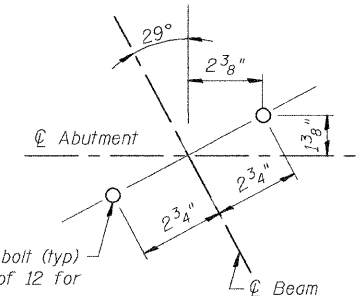
The test piles shall be driven to 110 percent of  
the Nominal Required Bearing indicated  
in the pile data information.



**PLAN**

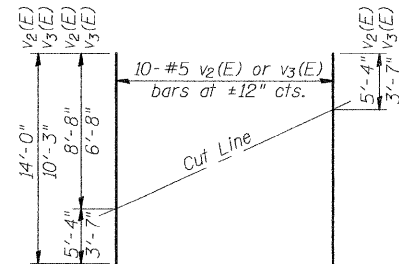
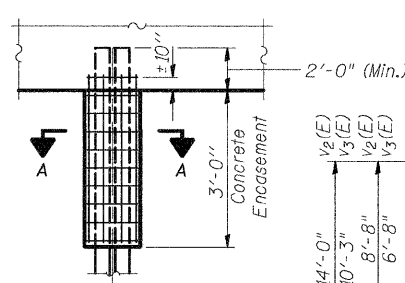
1"  $\phi$  Anchor bolt (typ)  
see sh. 10 of 12 for  
installation.

**ANCHOR BOLT SETTING DETAIL**



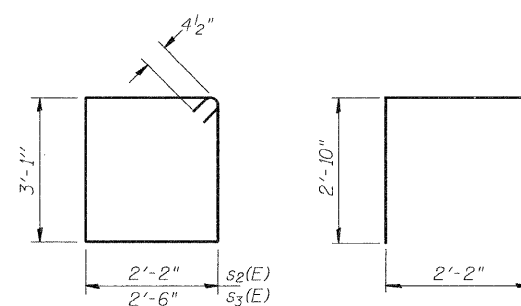
**PILE ENCASEMENT DETAIL**

Welded wire fabric  
6 x 6-W4.0 x W4.0  
weighing 58#/100 sq. ft.  
The cost of Excavation,  
Concrete Encasement and  
Reinforcement is included  
with Furnishing Piles.  
Forms for Encasement may  
be omitted when soil  
conditions permit.



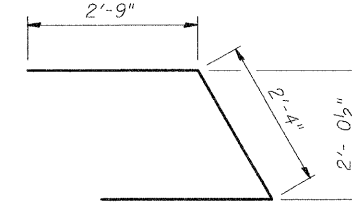
**FIELD CUTTING DIAGRAM**

Order v2(E) & v3(E) full length. Cut as shown  
and use remainder of bars in opposite face.



**BARS s2(E) & s3(E)**

**BAR s4(E)**



**BAR u(E)**

**BILL OF MATERIAL**

Bar	No.	Size	Length	Shape
h(E)	36	#5	12'-11"	—
h1(E)	12	#5	10'-0"	—
h2(E)	3	#5	8'-2"	—
p(E)	16	#6	26'-8"	—
p1(E)	12	#4	25'-11"	—
s2(E)	46	#4	11'-3"	□
s3(E)	2	#4	11'-11"	□
s4(E)	41	#4	7'-10"	□
u(E)	10	#6	7'-10"	—
v1(E)	98	#5	4'-4"	—
v2(E)	10	#5	14'-0"	—
v3(E)	10	#5	10'-3"	—
Concrete Structures		Cu. Yd.	25.0	
Reinforcement Bars		Pound	3080	
Epoxy Coated				
Structure Excavation		Cu. Yd.	24.9	
Furnishing Steel		Foot	252	
Piles HP12x53				
Driving Piles		Foot	252	

**NORTH ABUTMENT**  
FAP 310 (US 67) OVER TRIB  
SOUTH BRANCH OF PIASA CREEK  
SECTION 60-(16B, 16-1B)  
MADISON COUNTY STA 160+24.00  
SN 060-0328

DESIGNED	R.P.B.
CHECKED	M.R.E.
DRAWN	M.R.E.
CHECKED	R.P.B.

AI-L 12/21/00