

INDEX OF SHEETS

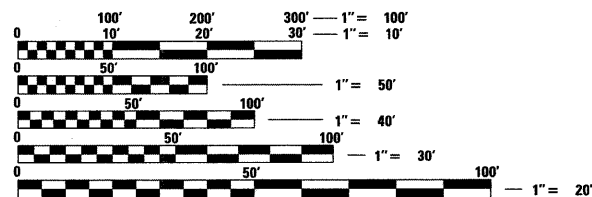
SHEET NUMBER	DESCRIPTION
1	COVER SHEET
2	GENERAL NOTES & COMMITMENTS
3A	SUMMARY OF QUANTITIES
4-5	TYPICAL SECTIONS - EXISTING
6-7	TYPICAL SECTIONS - PROPOSED
8-10	QUANTITY SCHEDULES
11	HORIZONTAL ALIGNMENT & LOCAL TIES
12	STAGES OF CONSTRUCTION
13-16	PLAN AND PROFILE SHEETS
17-18	EROSION CONTROL PLANS
19-20	RIGHT-OF-WAY PLANS
21-22	REMOVAL SHEETS
23	INTERSECTION GEOMETRIC DETAIL SHEET
24-27	SIGN RELOCATION DETAILS
28	MISCELLANEOUS DETAILS
29-30	PAVEMENT MARKING SHEETS
31-35	TRAFFIC SIGNAL DETAILS
36-49	CROSS SECTIONS

STANDARDS

STD. NO.		
000001-05	606001-03	720011
420001-07	606006-01	729001
420601-05	606301-03	780001-01
420701-02	701602-03	781001-02
482001-02	701701-05	814001-01
482006-03	701901	878001-06
542301-01	720006-01	

WESTBOUND UNIVERSITY PARK DRIVE
CONSTRUCTION BEGINS @ 304+26.19

EASTBOUND UNIVERSITY PARK DRIVE
CONSTRUCTION BEGINS @ 201+16.08



FULL SIZE PLANS HAVE BEEN PREPARED USING STANDARD ENGINEERING SCALES. REDUCED SIZED PLANS WILL NOT CONFORM TO STANDARD SCALES. IN MAKING MEASUREMENTS ON REDUCED PLANS, THE ABOVE SCALES MAY BE USED.

J.U.L.I.E.
JOINT UTILITY LOCATION INFORMATION FOR EXCAVATION
1-800-892-0123
OR 811

DESIGN DESIGNATION - 5,885(27) ARTERIAL 0.47 (FD-20)

MICROFILMED _____
REEL NUMBER _____
AWARDED _____
RESIDENT ENGINEER _____
AS BUILT CHANGES WERE MADE
ON THE FOLLOWING SHEETS _____

CONTRACT NO. 76B41

PROJECT ENGINEER: LEBEAU, PATTI (346-3179)
SQUAD LEADER: KEPLAR, CHERYL (346-3186)

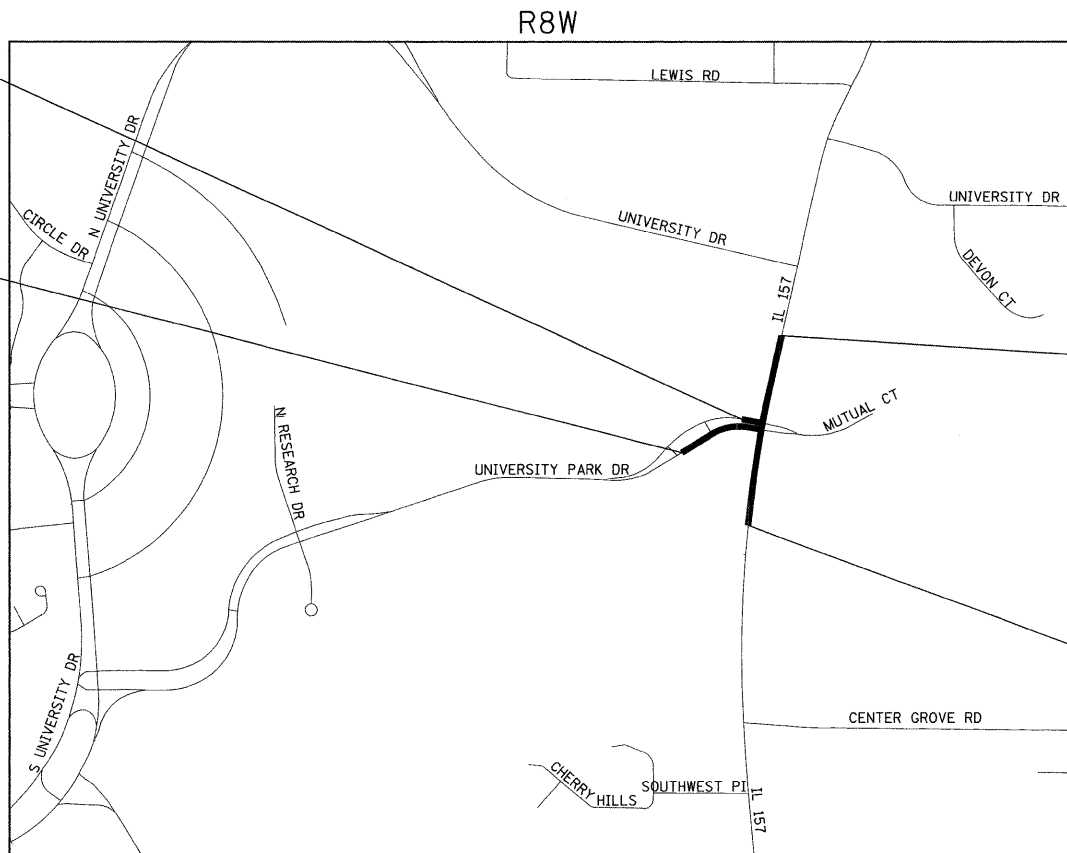
STATE OF ILLINOIS
DEPARTMENT OF TRANSPORTATION
DIVISION OF HIGHWAYS

PROPOSED
HIGHWAY PLANS

FAP ROUTE 592
SECTION 65I-TS-1

MADISON COUNTY

INTERSECTION IMPROVEMENTS AT IL ROUTE 157
AND UNIVERSITY PARK DRIVE
C-98-010-08



LOCATION MAP

SCALE: 1" = 600 FEET

NET LENGTH OF IL ROUTE 157 = 1225 FEET (0.232 MILE)
GROSS LENGTH OF PROJECT = 1225 FEET (0.232 MILE)

F.A.P. RTE.	SECTION	COUNTY	TOTAL SHEETS	SHEET NO.
592	65I-TS-1	MADISON	50	1
FED. ROAD DIST. NO. 8	ILLINOIS	CONTRACT NO. 76B41		

50
+1
51

D-98-018-08



LOCATION OF SECTION INDICATED THUS: -

IL ROUTE 157
CONSTRUCTION ENDS
@ 529+31.27

IL ROUTE 157
CONSTRUCTION BEGINS
@ 517+06.65

STATE OF ILLINOIS
DEPARTMENT OF TRANSPORTATION
DIVISION OF HIGHWAYS

SUBMITTED July 7, 2008
Marg C. Lurie
DEPUTY DIRECTOR OF HIGHWAYS, REGION ENGINEER

August 15, 2008
Eric E. Harn
Interim ENGINEER OF DESIGN AND ENVIRONMENT

August 15, 2008
Christine M. Reed
DIRECTOR OF HIGHWAYS, CHIEF ENGINEER

PRINTED BY THE AUTHORITY
OF THE STATE OF ILLINOIS



Brian F. Kulick 7/09/08
BRIAN F. KULICK, P.E. No. 49936 DATE

Expires 11-30-09

Juneau Associates, Inc. P.C.
CONSULTING ENGINEERS AND LAND SURVEYORS

2100 State Street, P.O. Box 1325
Granite City, Illinois 62040
Phone: (618) 877-1400 / (618) 452-5535
Fax: (618) 452-5541

100 North Research Drive
Edwardsville, Illinois 62025
Phone: (618) 659-0900 / (618) 659-0800
Fax: (618) 659-0941