

COORDINATES AND BEARINGS SHOWN HEREON ARE BASED ON SURVEY CONTROL DATA AS PROVIDED BY THE ILLINOIS DEPARTMENT OF TRANSPORTATION.



COORDINATE TABLE			
STATION	OFFSET	NORTH	EAST
(ILLINOIS ROUTE 157) Baseline (Construction)			
P.C. 500+00.00		771,861.8484	350,183.5578
P.L. 513+62.81		773,218.1625	350,050.6017
Begin 517+06.65		773,565.6730	350,186.8264
P.T. 527+02.97		774,548.7574	350,345.1906
End 529+31.27		774,771.6601	350,394.5405
UNIVERSITY PARK DRIVE (EXUDE-1)			
P.O.T. 200+00		773,990.1558	349,657.0687
P.C. 203+17.51		774,152.8979	349,929.7044
P.T. 205+45.64		774,194.4852	350,149.2745
P.O.T. 206+69.03		774,174.3667	350,271.0120
UNIVERSITY PARK DRIVE (EXUDW-1)			
P.O.T. 300+00		774,154.8948	349,742.8048
P.C. 300+62.58		774,187.8363	349,796.0179
P.T. 303+87.35		774,246.3087	350,108.0317
P.O.T. 305+60.40		774,214.6805	350,278.1691

WESTBOUND UNIVERSITY PARK DRIVE

PROP. CURVE EXUDW-1
 PI STA. = 302+32.77
 $\Delta = 42^\circ 17' 26''$ (RT)
 $D = 13^\circ 01' 18''$
 $R = 440.00'$
 $T = 170.18'$
 $L = 324.77'$
 $E = 31.76'$
 S.E. RUN = N/A
 P.C. STA. = 300+62.58
 P.T. STA. = 303+87.35

EASTBOUND UNIVERSITY PARK DRIVE

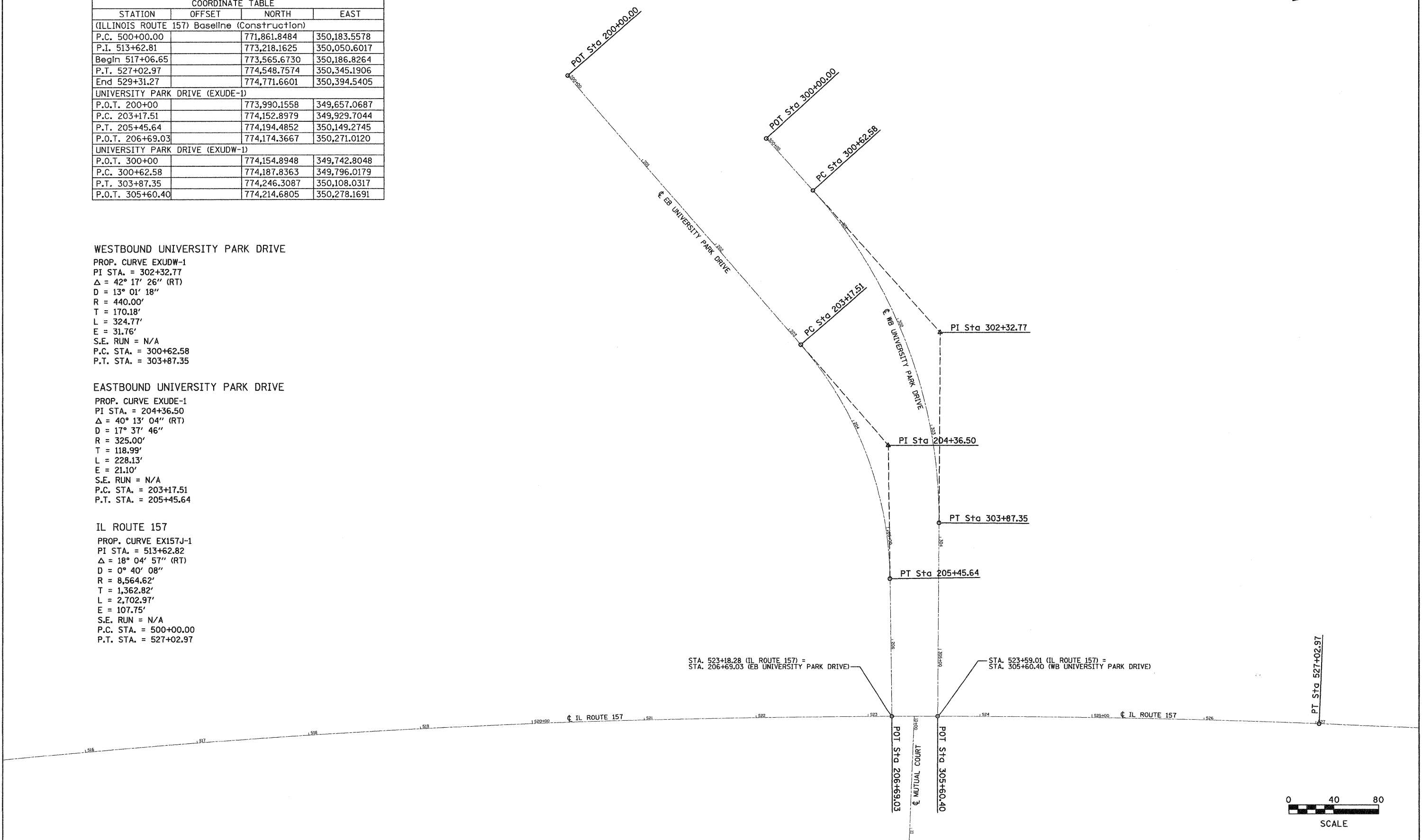
PROP. CURVE EXUDE-1
 PI STA. = 204+36.50
 $\Delta = 40^\circ 13' 04''$ (RT)
 $D = 17^\circ 37' 46''$
 $R = 325.00'$
 $T = 118.99'$
 $L = 228.13'$
 $E = 21.10'$
 S.E. RUN = N/A
 P.C. STA. = 203+17.51
 P.T. STA. = 205+45.64

IL ROUTE 157

PROP. CURVE EX157J-1
 PI STA. = 513+62.82
 $\Delta = 18^\circ 04' 57''$ (RT)
 $D = 0^\circ 40' 08''$
 $R = 8,564.62'$
 $T = 1,362.82'$
 $L = 2,702.97'$
 $E = 107.75'$
 S.E. RUN = N/A
 P.C. STA. = 500+00.00
 P.T. STA. = 527+02.97

DATE	
BY	
REVISIONS	
NO.	
DATE	
BY	
REVISIONS	
NO.	
DATE	
BY	
REVISIONS	
NO.	

DATE	
BY	
REVISIONS	
NO.	
DATE	
BY	
REVISIONS	
NO.	
DATE	
BY	
REVISIONS	
NO.	



FILE NAME =	USER NAME = jeremy	DESIGNED - BFK	REVISED	STATE OF ILLINOIS DEPARTMENT OF TRANSPORTATION	HORIZONTAL ALIGNMENT & LOCAL TIES			F.A.P. RTE. 592	SECTION 651-TS-1	COUNTY MADISON	TOTAL SHEETS 50	SHEET NO. 11
FILEL		DRAWN - JUB	REVISED		SCALE: 1" = 40'	SHEET NO. 1 OF 1 SHEETS	STA. 514+00.00 TO STA. 526+00.00	CONTRACT NO. 76B41				
		CHECKED - BFK	REVISED		FED. ROAD DIST. NO. 8 ILLINOIS FED. AID PROJECT							
		DATE - 6/18/08	REVISED									