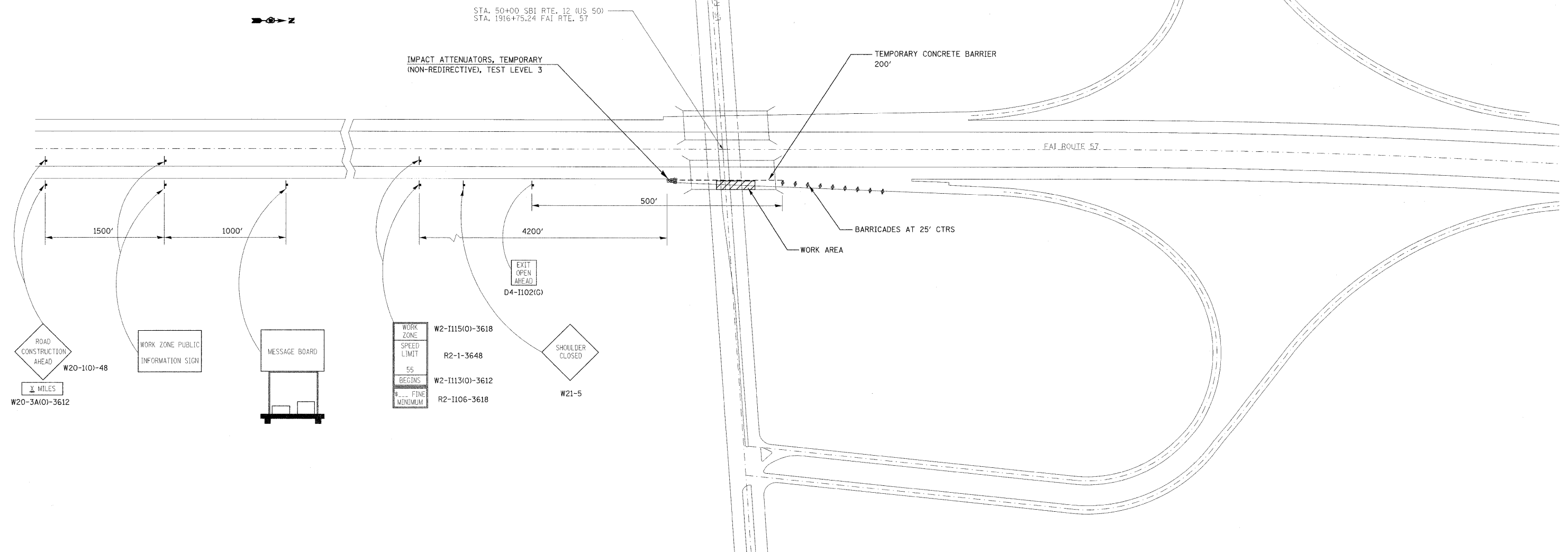


- CONCRETE REMOVAL

NOTES

1. THE ROAD CONSTRUCTION AHEAD SIGN SHALL BE LOCATED 3 TO 5 MILES IN ADVANCE OF THE PROJECT LIMITS.
2. THE MESSAGE AND SIZE OF THE WORK ZONE PUBLIC INFORMATION SIGN SHALL BE AS SPECIFIED BY THE DEPARTMENT.
3. THE COST OF ALL TRAFFIC CONTROL DEVICES AS HEREIN SPECIFIED SHALL BE INCLUDED IN THE CONTRACT LUMP SUM PRICE FOR TRAFFIC CONTROL AND PROTECTION (SPECIAL).



FILE NAME =	USER NAME = galinh	DESIGNED -	REVISED -
et:\projects\d876c17\design\d76c17-sht-4.dwg		DRAWN -	REVISED -
PLOT SCALE = 50.0000' / IN.		CHECKED -	REVISED -
PLOT DATE = 7/7/2008		DATE -	REVISED -

**STATE OF ILLINOIS
DEPARTMENT OF TRANSPORTATION**

TRAFFIC CONTROL (I-57)

SCALE: _____ SHEET NO. 4 OF 7 SHEETS STA. _____ TO STA. _____

F.A.I. RTE.	SECTION	COUNTY	TOTAL SHEETS	SHEET NO.
57	61-3HB-1HDF	MARION	7	4
CONTRACT NO. 76C17				
FED. ROAD DIST. NO. ILLINOIS FED. AID PROJECT				