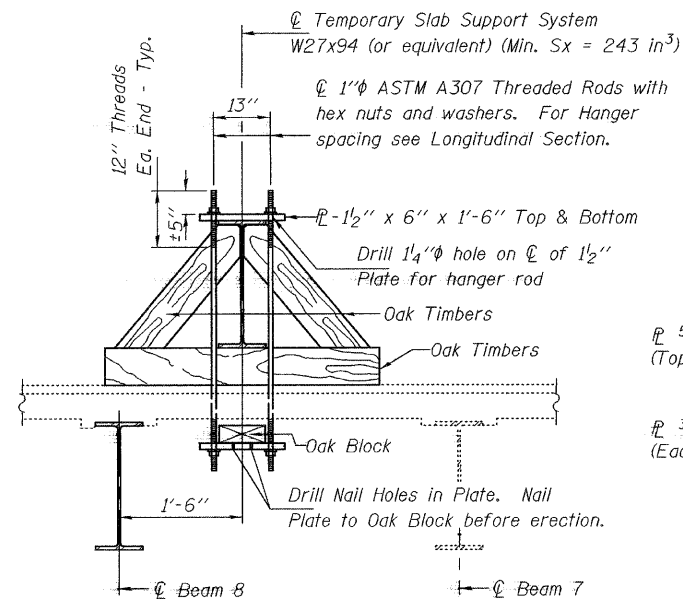


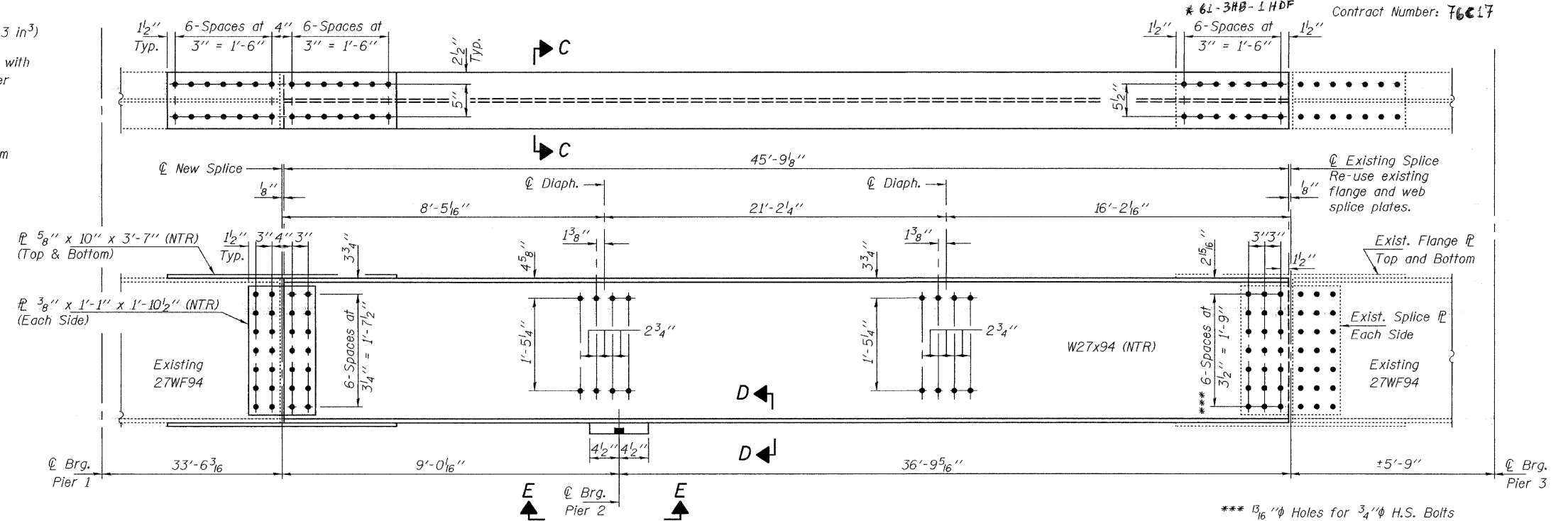
STATE OF ILLINOIS
DEPARTMENT OF TRANSPORTATION

ROUTE NO.	SECTION	COUNTY	SHEET	SHEET
FAI 57	*	MARION	7	7
FED. ROAD DIST. NO. 7	ILLINOIS	FED. AID PROJECT		

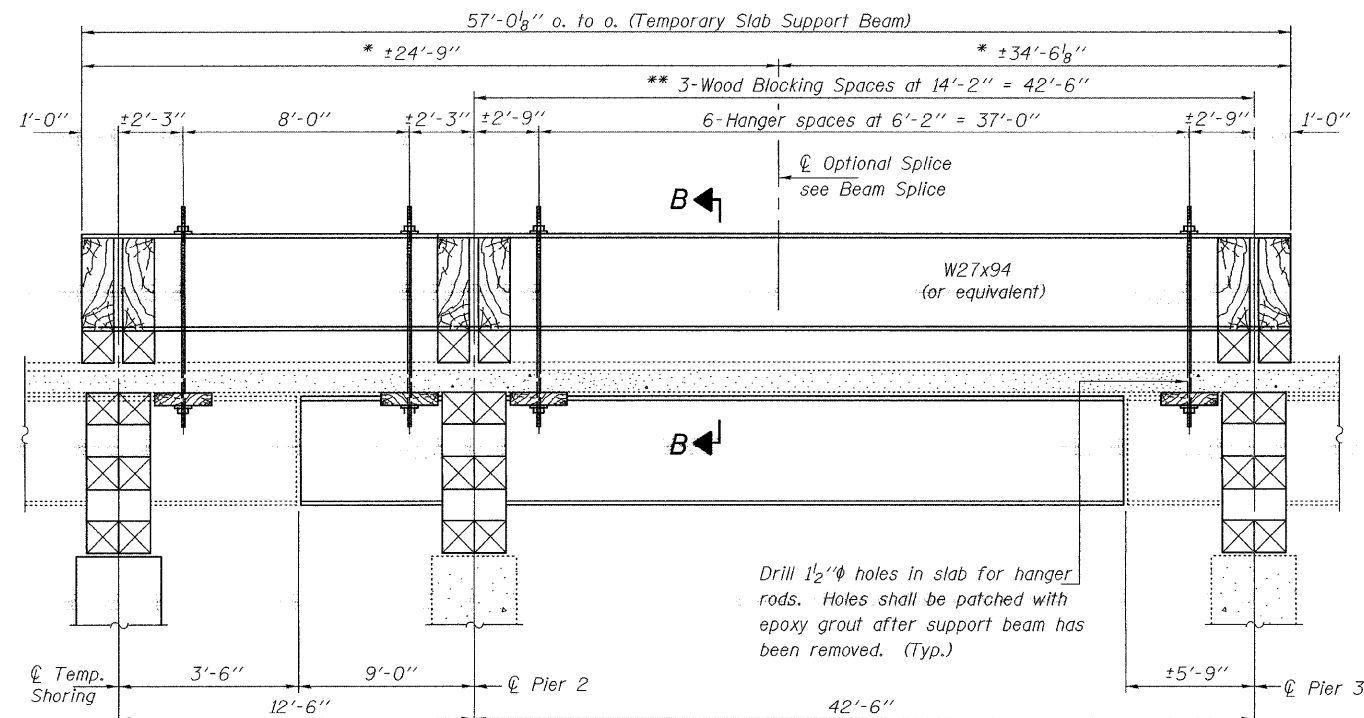
SHEET NO. 2
2 SHEETS



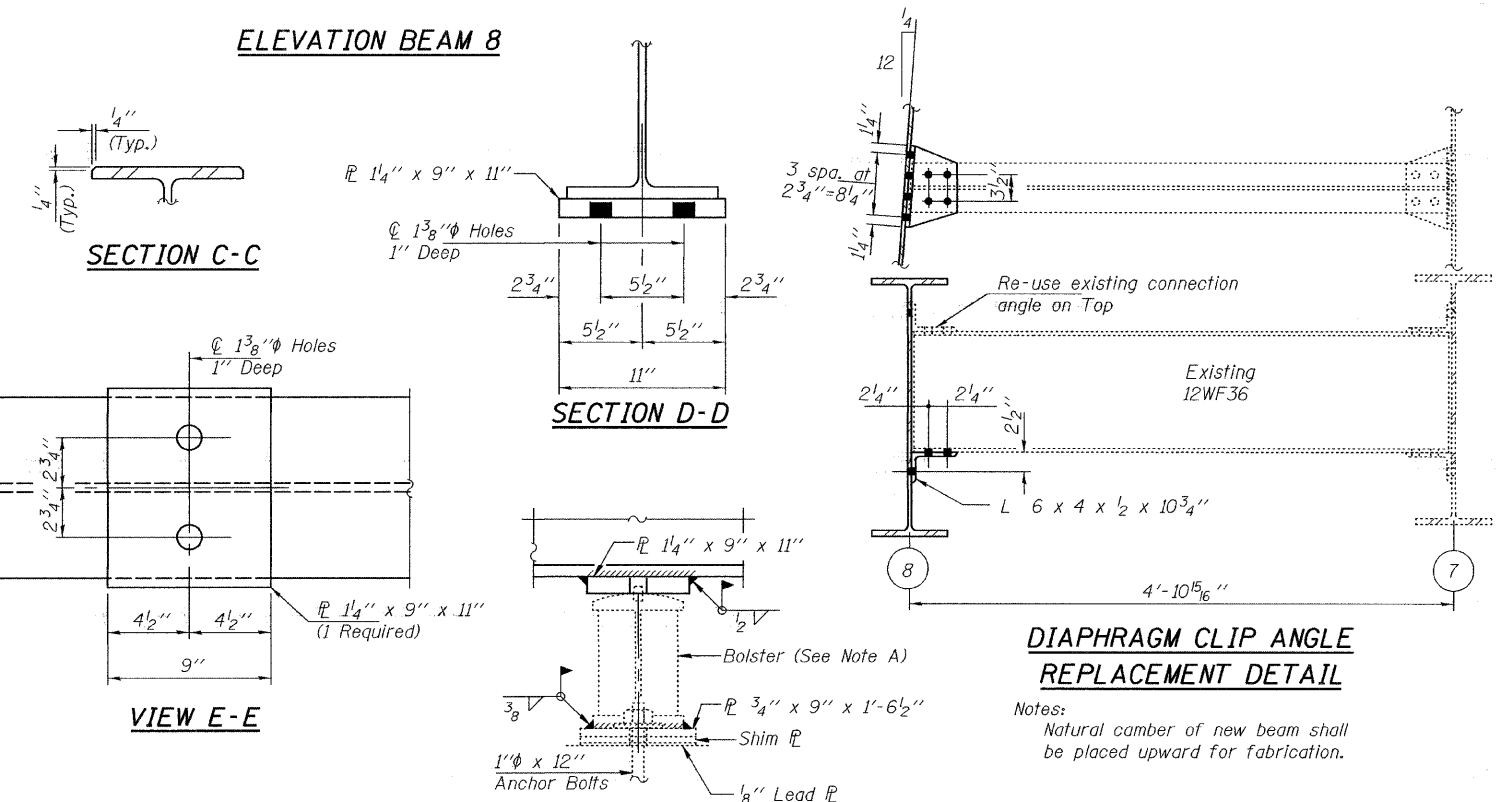
SECTION B-B



ELEVATION BEAM 8



LONGITUDINAL SECTION
SUGGESTED TEMPORARY SLAB SUPPORT SYSTEM



PIER 2 BEARING DETAILS

NOTE A:
Remove weld connecting bolster to Bottom Bearing \bar{r} using Air-Arc Method and grind smooth all weld material remaining on Bolster and Bottom Bearing \bar{r} .
After new beam is in place, install Bolster and Top \bar{r} and field weld Top \bar{r} and Bolster as shown.

DIAPHRAGM CLIP ANGLE
REPLACEMENT DETAIL
Notes:
Natural camber of new beam shall be placed upward for fabrication.

REPAIR DETAILS
FAI RT. 57
MARION COUNTY
SN 061-0053

* These dimensions may vary for available beams in stock.
** Wood Blocking between Piers to be placed after Support Beam deflects under its own weight.

DESIGNED	VHV
CHECKED	SJB
DRAWN	Steffen
CHECKED	VHV SJB

JULY 28, 2008
EXAMINED *Carl Pruey*
ENGINEER OF STRUCTURAL SERVICES
PASSED *Ralph E. Anderson*
ENGINEER OF BRIDGES AND STRUCTURES