

CONTRACT NO.: 83943

F.A.U. RTE.	SECTION	COUNTY	TOTAL SHEETS	SHEET NO.
3887	96-00159-00-CH	KANE	70	9
STA.		TO STA.		
FED. ROAD DIST. NO.		ILLINOIS FED. AID PROJECT		

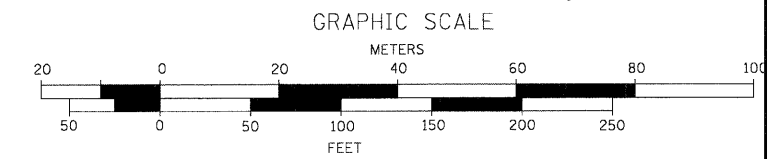
SITE CONTROL POINT BEYOND PROJECT LIMITS
 "4" CUT IN S/W (FOUND)
 N 10353.82
 E 9127.24
 ELEV 791.45
 Sta 1+01.34
 Off -28.07 FT

SITE CONTROL POINT BEYOND PROJECT LIMITS
 IR (FOUND)
 N 10244.04
 E 9251.93
 ELEV 783.49
 Sta 2+58.24
 Off 26.53 FT

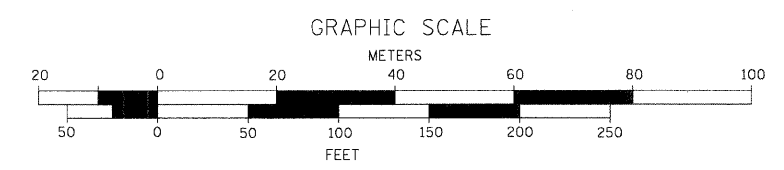
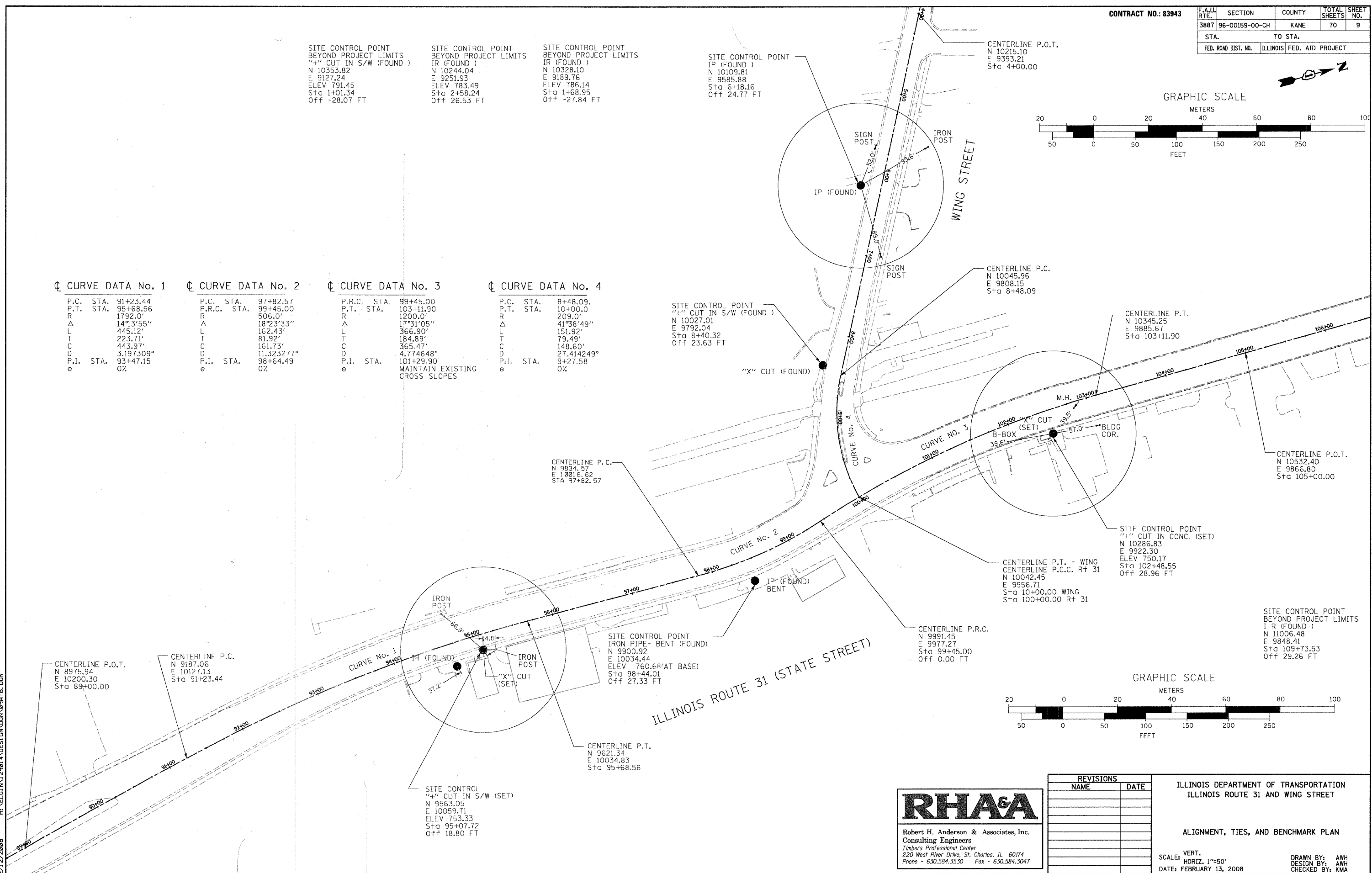
SITE CONTROL POINT BEYOND PROJECT LIMITS
 IR (FOUND)
 N 10328.10
 E 9189.76
 ELEV 786.14
 Sta 1+68.95
 Off -27.84 FT

SITE CONTROL POINT
 IP (FOUND)
 N 10109.81
 E 9585.88
 Sta 6+18.16
 Off 24.77 FT

CENTERLINE P.O.T.
 N 10215.10
 E 9393.21
 Sta 4+00.00



☉ CURVE DATA No. 1	☉ CURVE DATA No. 2	☉ CURVE DATA No. 3	☉ CURVE DATA No. 4
P.C. STA. 91+23.44	P.C. STA. 97+82.57	P.R.C. STA. 99+45.00	P.C. STA. 8+48.09
P.T. STA. 95+68.56	P.R.C. STA. 99+45.00	P.T. STA. 103+11.90	P.T. STA. 10+00.0
R Δ 14°13'55"	R Δ 18°23'33"	R Δ 17°31'05"	R Δ 41°38'49"
L 445.12'	L 162.43'	L 366.90'	L 151.92'
T 223.71'	T 81.92'	T 184.89'	T 79.49'
C 443.97'	C 161.73'	C 365.47'	C 148.60'
D 3.197309°	D 11.323277°	D 4.774648°	D 27.414249°
P.I. STA. 93+47.15	P.I. STA. 98+64.49	P.I. STA. 101+29.90	P.I. STA. 9+27.58
e 0%	e 0%	e MAINTAIN EXISTING CROSS SLOPES	e 0%



ILLINOIS ROUTE 31 (STATE STREET)

RHA&A
 Robert H. Anderson & Associates, Inc.
 Consulting Engineers
 Timbers Professional Center
 220 West River Drive, St. Charles, IL 60174
 Phone - 630.584.3530 Fax - 630.584.3047

REVISIONS	
NAME	DATE

ILLINOIS DEPARTMENT OF TRANSPORTATION
 ILLINOIS ROUTE 31 AND WING STREET

ALIGNMENT, TIES, AND BENCHMARK PLAN

SCALE: VERT. HORIZ. 1"=50'
 DATE: FEBRUARY 13, 2008

DRAWN BY: AWH
 DESIGN BY: AWH
 CHECKED BY: KMA

2/12/2008 H:\NELC\N12901\4\DESIGN\DWG\999999.DWG