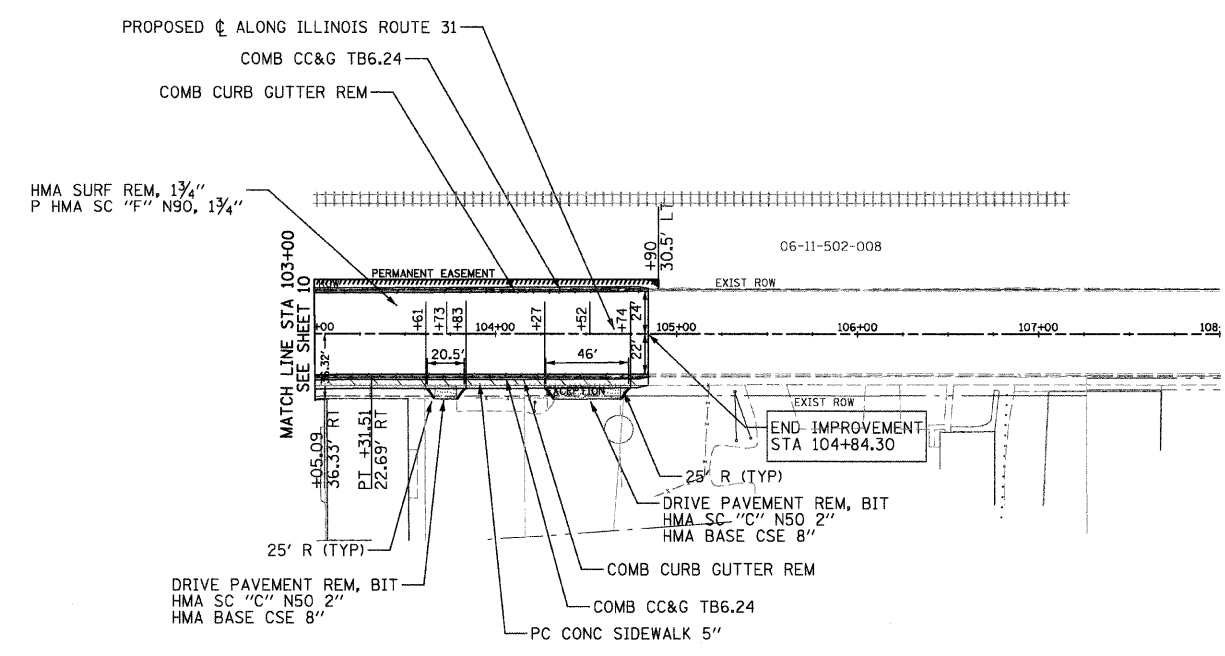
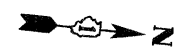
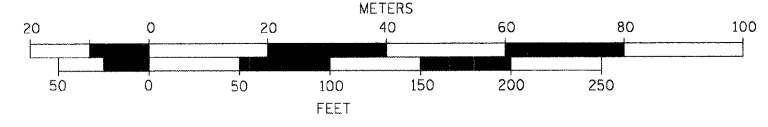


F.A.U. RTE.	SECTION	COUNTY	TOTAL SHEETS	SHEET NO.
3887	96-00159-00-CH	KANE	70	11
STA. 103+00.00		TO STA. 104+84.30		
FED. ROAD DIST. NO.	ILLINOIS FED. AID PROJECT			

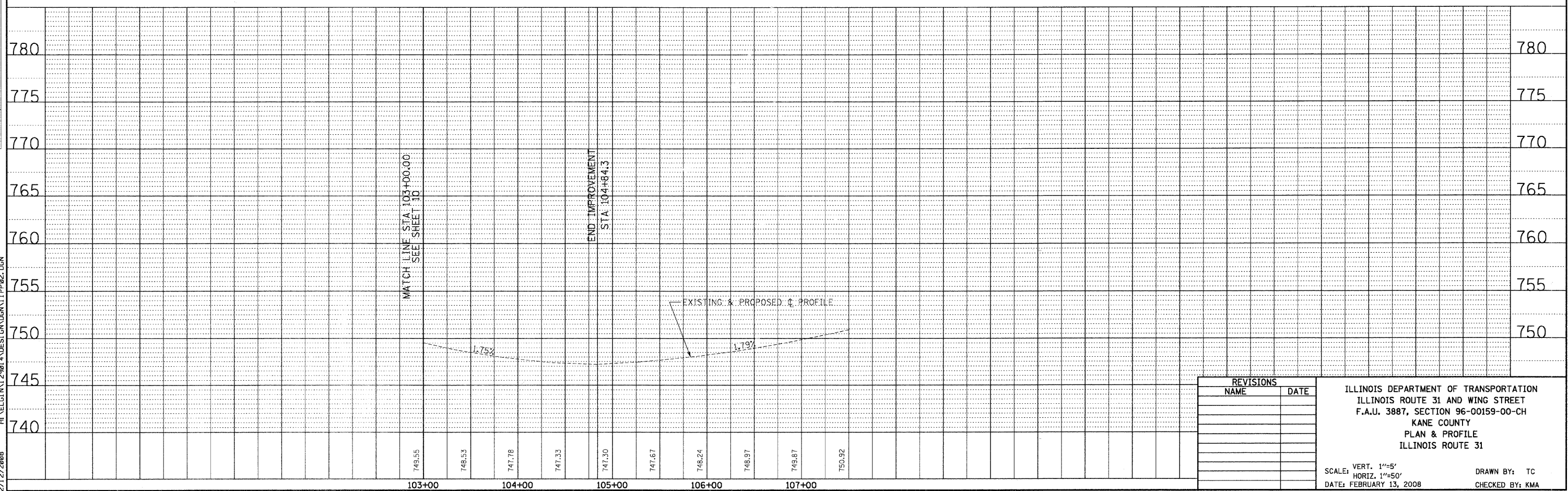
CONTRACT NO.: 83943

GRAPHIC SCALE



NOTES:

1. CONCRETE CURB, TYPE B WILL BE INSTALLED AT DRIVEWAY APPROACHES.
2. AGGREGATE SURFACE COURSE FOR TEMPORARY ACCESS, 8" WILL BE INSTALLED AT DRIVEWAY APPROACHES.



REVISIONS	
NAME	DATE

ILLINOIS DEPARTMENT OF TRANSPORTATION
 ILLINOIS ROUTE 31 AND WING STREET
 F.A.U. 3887, SECTION 96-00159-00-CH
 KANE COUNTY
 PLAN & PROFILE
 ILLINOIS ROUTE 31

SCALE: VERT. 1"=5'
 HORIZ. 1"=50'
 DATE: FEBRUARY 13, 2008

DRAWN BY: TC
 CHECKED BY: KMA

PLAN	DATE
BY	
DATE	
BY	
DATE	
BY	
DATE	
BY	
DATE	

PROFILE	DATE
BY	
DATE	
BY	
DATE	
BY	
DATE	
BY	
DATE	

2/12/2008 H:\ELGT\112501_4\DESIGN\GN\GN\11PP02.DGN