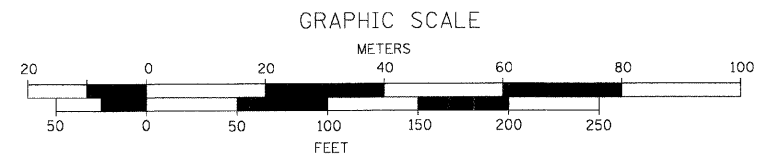


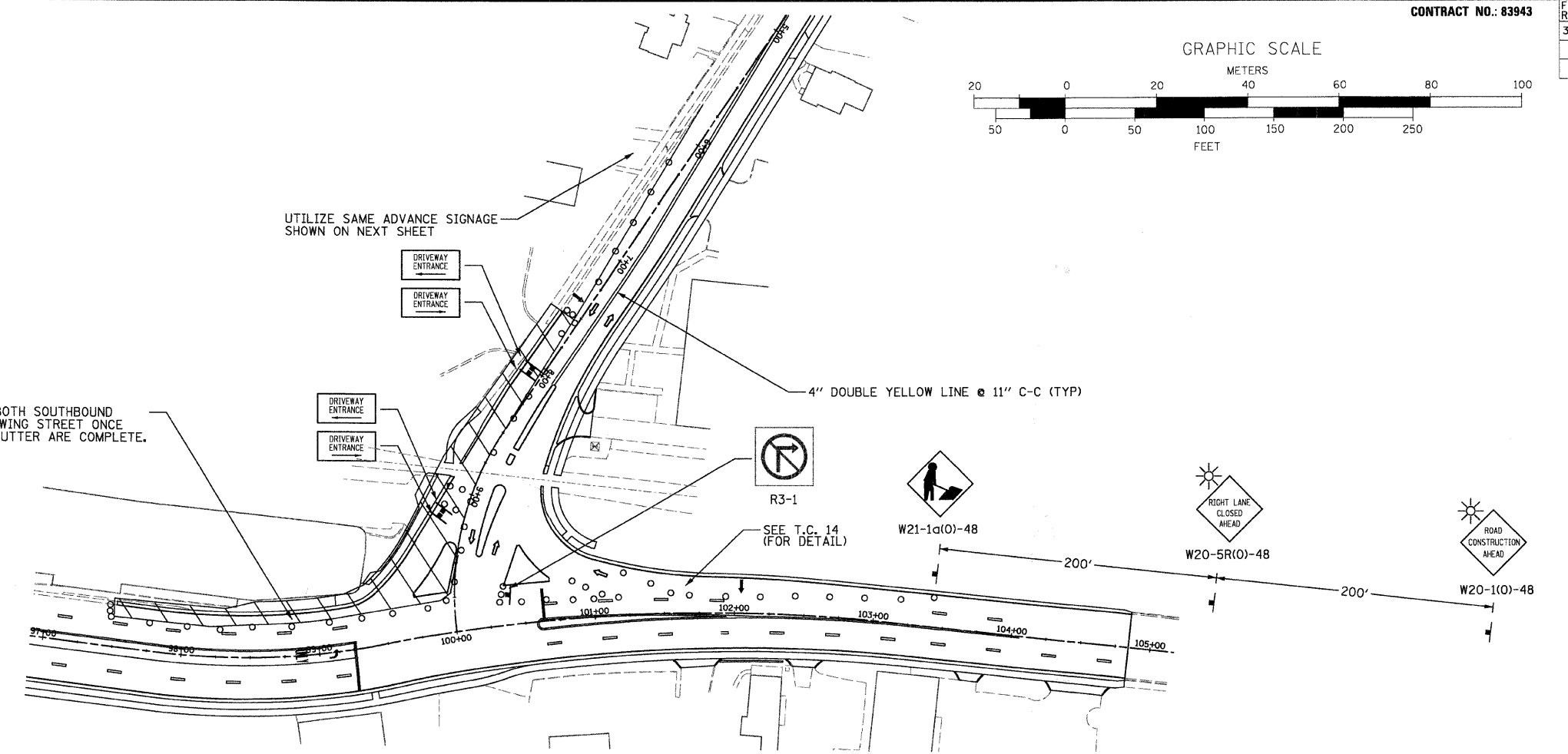
CONTRACT NO.: 83943

F.A.U. RTE.	SECTION	COUNTY	TOTAL SHEETS	SHEET NO.
3887	96-00159-00-CH	KANE	70	18
STA. 98+00.00		TO STA. 104+84.30		
FED. ROAD DIST. NO.	ILLINOIS	FED. AID PROJECT		

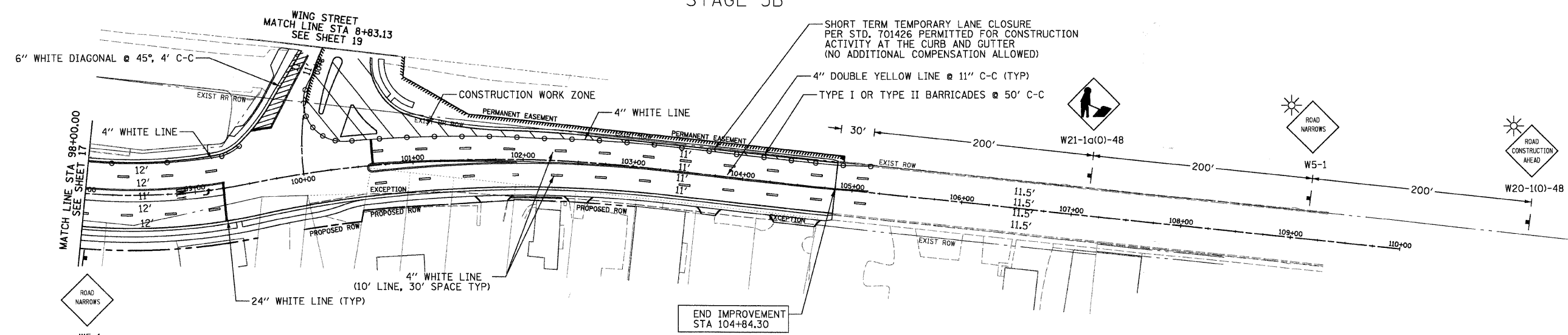


CONTRACTOR SHALL OPEN BOTH SOUTHBOUND LANES ON BOTH SIDES OF WING STREET ONCE THE ADJACENT CURB AND GUTTER ARE COMPLETE.

UTILIZE SAME ADVANCE SIGNAGE SHOWN ON NEXT SHEET



STAGE 3B



SYMBOLS

- TYPE I OR TYPE II BARRICADES AT 50' C-C TANGENTS; 25' C-C TAPERS; 12' C-C RADII (TYP)
- ⊥ SIGN ON PORTABLE OR PERMANENT SUPPORT
- ☀ MONO-DIRECTIONAL FLASHING BEACON
- ARROW BOARD
- ▭ WORK ZONE

NOTES:

1. ALL TEMPORARY PAVEMENT MARKINGS WILL BE PAINT.
2. EXISTING MEDIANS AND ISLANDS SHALL BE REMOVED PRIOR TO STAGE 3.
3. SOUTHWEST ISLAND TO BE CONSTRUCTED AFTER WIDENING IS COMPLETED AND PRIOR TO RESURFACING.

RHA&A
 Robert H. Anderson & Associates, Inc.
 Consulting Engineers
 Timbers Professional Center
 220 West River Drive, St. Charles, IL 60174
 Phone - 630.584.3530 Fax - 630.584.3047

REVISIONS	
NAME	DATE

ILLINOIS DEPARTMENT OF TRANSPORTATION
 ILLINOIS ROUTE 31 AND WING STREET

MAINTENANCE OF TRAFFIC
 STAGE 3
 STA 98+00.00 TO STA 104+84.30

SCALE: VERT. 1"=50'
 HORIZ. 1"=50'
 DATE: FEBRUARY 13, 2008

DRAWN BY: TC
 DESIGN BY: TC
 CHECKED BY: KMA

2/12/2008 H:\ELGIN\12981_4\DESIGN\DDON\1\BMA1\N06.DGN