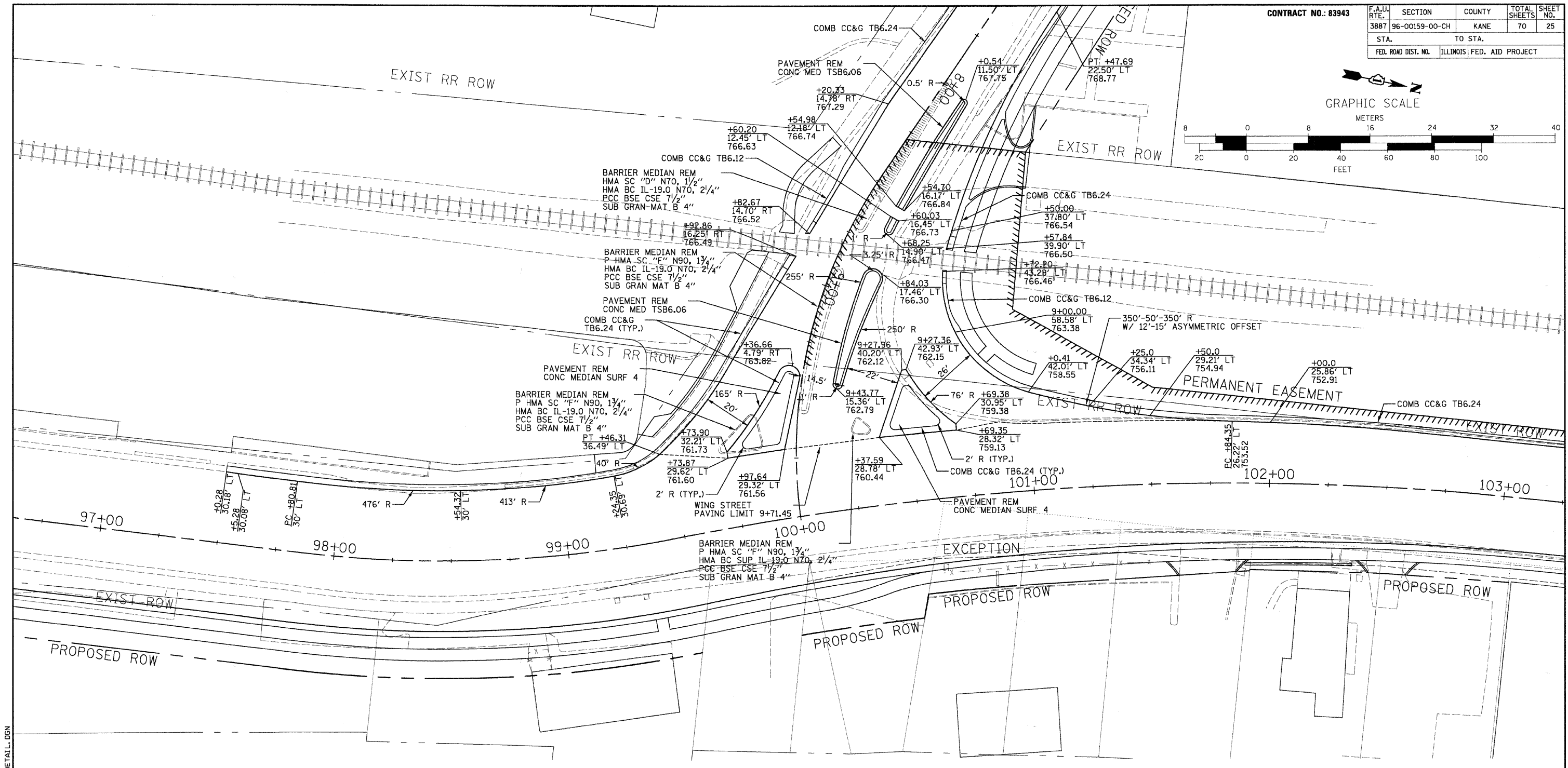


CONTRACT NO.: 83943

F.A.U. SECTION	COUNTY	TOTAL SHEETS	SHEET NO.
3887 96-00159-00-CH	KANE	70	25
STA. TO STA.			
FED. ROAD DIST. NO.		ILLINOIS FED. AID PROJECT	



- NOTES:
1. AGGREGATE FILL OF GRADATION CA 7, CA 6, CA 11, CA 13, CA 14, CA 15, OR CA 16 WILL BE PLACED UNDER THE PAVED MEDIAN.
 2. ALL SIDEWALKS AND CURBS AT CROSSWALKS SHOULD MEET ADA REQUIREMENTS AND CONFORM TO STANDARD 424001.
 3. TRANSITIONING FROM COMB CC&G TB6.24 TO COMB CC&G TB6.12 SHALL BE INCLUDED IN THE COST OF COMB CC&G TB6.12.

RHA&A
Robert H. Anderson & Associates, Inc.
Consulting Engineers
Timbers Professional Center
220 West River Drive, St. Charles, IL 60174
Phone - 630.584.3530 Fax - 630.584.3047

REVISIONS	
NAME	DATE

ILLINOIS DEPARTMENT OF TRANSPORTATION
ILLINOIS ROUTE 31 AND WING STREET

INTERSECTION DETAIL

SCALE: VERT. 1"=20'
HORIZ. 1"=20'
DATE: FEBRUARY 13, 2008

DRAWN BY: TC
DESIGN BY: TC
CHECKED BY: KMA

2/12/2008 H:\ELG\N12901\DESIGN\NDDN\251\INTERDETAIL.DGN