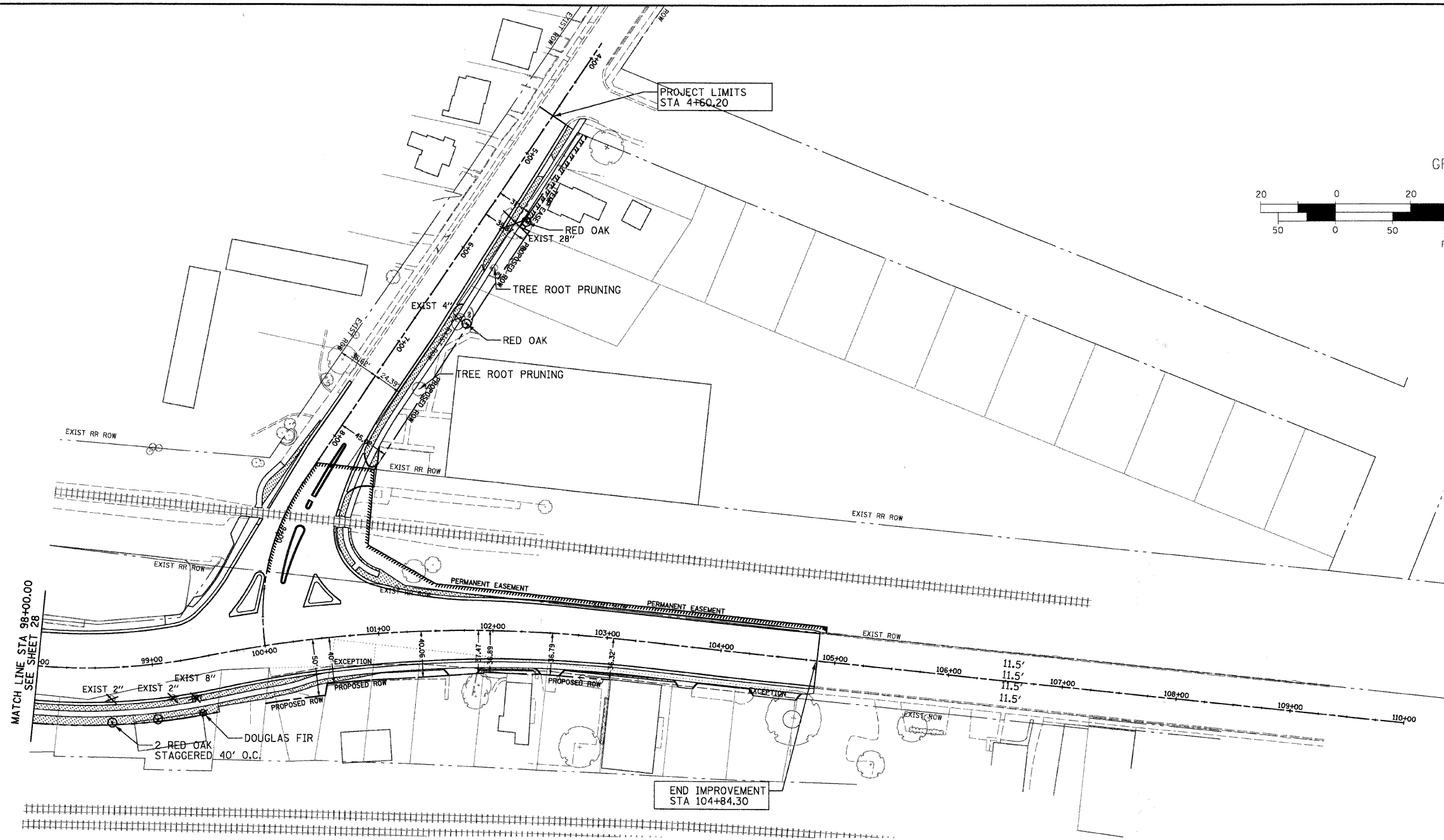
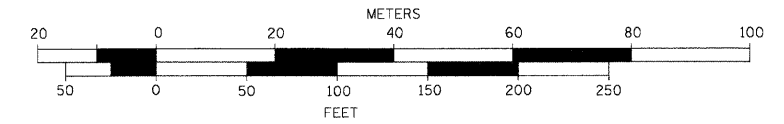


CONTRACT NO.: 83943

F.A.J. RTE.	SECTION	COUNTY	TOTAL SHEETS	SHEET NO.
3887	96-00159-00-CH	KANE	70	29
STA. 98+00.00		TO STA.104+84.30		
FED. ROAD DIST. NO.	ILLINOIS	FED. AID PROJECT		

GRAPHIC SCALE



LANDSCAPING LEGEND

- 4" TOPSOIL & SODDING
- TREE REMOVAL
- TREE

SCHEDULE OF TREES			
ITEM	COMMON NAME	UNIT	TOTAL
QUERCUS RUBRA	RED OAK	EACH	4
PSUEDOTSUGA MENZIESII	DOUGLAS FIR	EACH	1



Robert H. Anderson & Associates, Inc.
 Consulting Engineers
 Timbers Professional Center
 220 West River Drive, St. Charles, IL 60174
 Phone - 630.584.3530 Fax - 630.584.3047

REVISIONS	
NAME	DATE

ILLINOIS DEPARTMENT OF TRANSPORTATION
 ILLINOIS ROUTE 31 AND WING STREET

LANDSCAPING PLAN
 STA 98+00.00 TO STA 104+84.30

SCALE: VERT. 1"=50'
 HORIZ. 1"=50'
 DATE: FEBRUARY 13, 2008

DRAWN BY: TC
 DESIGN BY: TC
 CHECKED BY: KMA

2/12/2008 H:\ELGIN\1.2\901.4\DESIGN\ANDR2\91LANDR2.DGN