

FOR INDEX OF SHEETS, SEE SHEET NO. 2

FOR INDEX OF HIGHWAY STANDARDS, SEE SHEET NO. 2

STATE OF ILLINOIS  
DEPARTMENT OF TRANSPORTATION  
DIVISION OF HIGHWAYS

PLANS FOR PROPOSED  
FEDERAL AID PROJECT

INDIANWOOD BLVD (BLACKHAWK DR TO ORCHARD DR)  
STREET LIGHTING  
PROJECT NO.: TCSP-06IL(010)  
SECTION 07-00091-00-LT  
VILLAGE OF PARK FOREST  
COOK COUNTY  
JOB: C-91-165-07

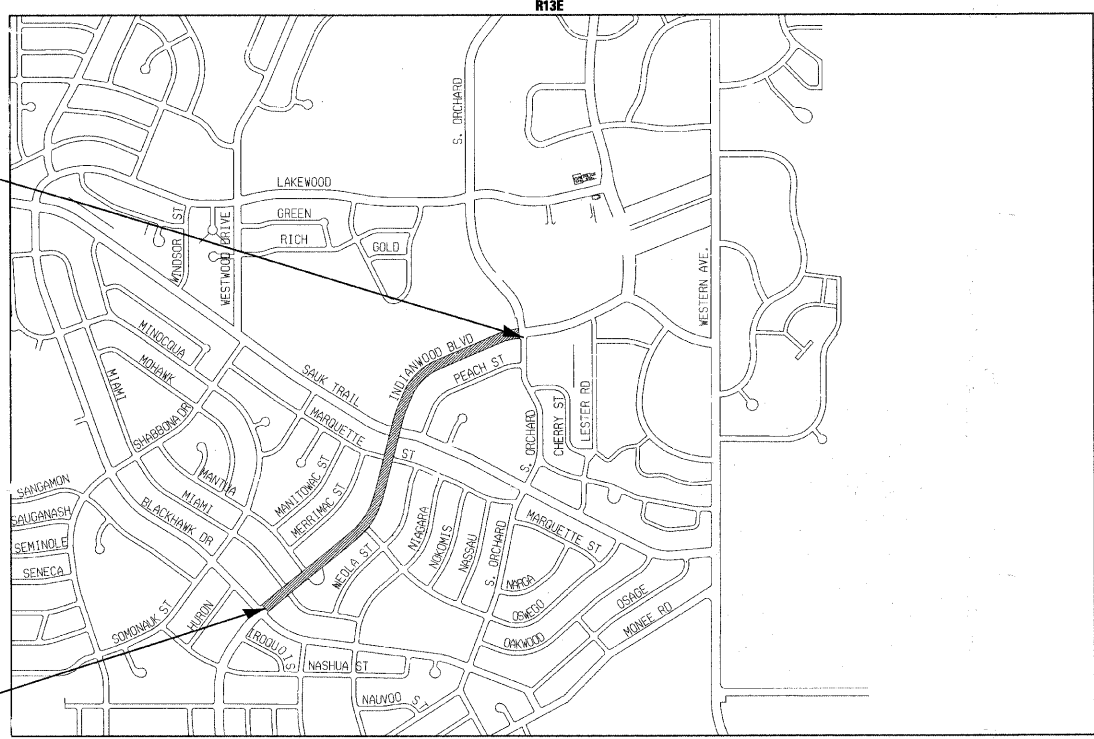
F.A. RTE.	SECTION	COUNTY	TOTAL SHEETS	SHEET NO.
*	**	COOK	10	1
STA.	TO STA.			
FED. ROAD DIST. NO	ILLINOIS	FED AID PROJECT TCSP-06IL (010)		
		CONTRACT NO. 83991		
		N/A		
		07-00091-00-LT		



INDIANWOOD BLVD  
IMPROVEMENT ENDS  
STA. 40 + 96

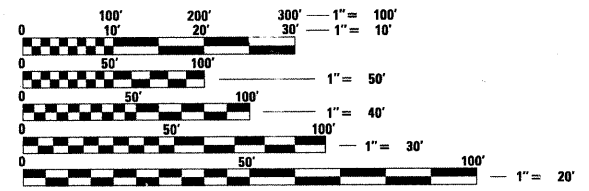
STA. 10 + 00 AHEAD =  
STA. 117 + 16.65 BACK

INDIANWOOD BLVD  
IMPROVEMENT BEGINS  
STA. 100 + 95



LOCATION MAP  
(NOT TO SCALE)

RICH TOWNSHIP  
GROSS AND NET LENGTH OF IMPROVEMENT = 4,648 LF OR 0.880 MILES



FULL SIZE PLANS HAVE BEEN PREPARED USING STANDARD ENGINEERING SCALES. REDUCED SIZED PLANS WILL NOT CONFORM TO STANDARD SCALES. IN MAKING MEASUREMENTS ON REDUCED PLANS, THE ABOVE SCALES MAY BE USED.

J.U.L.I.E.  
JOINT UTILITY LOCATION INFORMATION FOR EXCAVATION  
1-800-892-0123



THOMAS M. SATTERY  
62-050844  
REGISTERED  
PROFESSIONAL  
ENGINEER  
OF  
STATE OF ILLINOIS

*Thomas M. Satterly*  
PROJECT MANAGER  
"LICENSE EXPIRES 11-30-09"

JOHN T. BEAN  
62-033344  
REGISTERED  
PROFESSIONAL  
ENGINEER  
OF  
STATE OF ILLINOIS

*John T. Bean*  
PROJECT ENGINEER  
"LICENSE EXPIRES 11-30-09"

STATE OF ILLINOIS  
DEPARTMENT OF TRANSPORTATION  
DIVISION OF HIGHWAYS

APPROVED June 16, 2008  
*Kenneth A. Egan*  
VILLAGE OF PARK FOREST, DIRECTOR OF PUBLIC WORKS

PASSED July 1, 2008  
*Christopher Holt*  
LOCAL ROADS ENGINEER

RELEASING FOR BID  
BASED ON LIMITED  
REVIEW JULY 7  
*Dimitris M. O'Keefe*  
DEPUTY DIRECTOR OF  
HIGHWAYS, REGION 1 ENGINEER

PRINTED BY THE AUTHORITY  
OF THE STATE OF ILLINOIS

CONTRACT NO. 83991

Burlington, Wisconsin 262.763.7834  
Crystal Lake, Illinois 815.459.1269  
DeKalb, Illinois 815.787.3111  
Itasca, Illinois 630.773.1870  
Mokena, Illinois 708.478.2090  
Grayslake, Illinois (Plainfield, Illinois) 847.223.5088  
Rockford, Illinois 815.609.7425  
Madison, Wisconsin 608.347.1542

(OFFICE WHICH PREPARED PLANS)

B&W PROJECT NO.: 061389.40 DATE: 06-13-08

COPYRIGHT © 2007 BY BAXTER WOODMAN CONSULTING ENGINEERS, INC.  
 LICENSE NO. 04-00121 EXPIRES 4/30/2009  
 6/16/2008 9:33:50 AM  
 BUREAU OF LOCAL ROADS AND STREETS: PHIL MARCYL (847)705-4189

### GENERAL NOTES

ALL CONSTRUCTION SHALL BE DONE IN ACCORDANCE WITH THE DETAILS IN THE PLANS, THE SPECIAL PROVISIONS INCLUDED IN THE CONTRACT DOCUMENTS, AND THE LATEST EDITION OF THE FOLLOWING STATE OF ILLINOIS SPECIFICATIONS: "THE STANDARD SPECIFICATIONS FOR ROAD AND BRIDGE CONSTRUCTION" (REFERRED TO AS THE "STANDARD SPECIFICATIONS"), THE "SUPPLEMENTAL SPECIFICATIONS AND RECURRING SPECIAL PROVISIONS", THE "STANDARD SPECIFICATIONS FOR TRAFFIC CONTROL ITEMS", THE "MANUAL ON UNIFORM TRAFFIC CONTROL DEVICES FOR STREETS AND HIGHWAYS", THE "MANUAL OF TEST PROCEDURES FOR MATERIALS" AND THE "STANDARD SPECIFICATIONS FOR WATER AND SEWER MAIN CONSTRUCTION IN ILLINOIS".

UTILITY LOCATIONS HAVE NOT BEEN SHOWN ON THESE PLANS. THE CONTRACTOR SHALL HAVE THE RESPECTIVE UTILITY COMPANIES FIELD LOCATE ALL THEIR FACILITIES PRIOR TO BEGINNING CONSTRUCTION. THE CONTRACTOR SHALL ALSO VERIFY THE DEPTHS OF THE EXISTING UTILITIES IF NECESSARY. ANY RELOCATION OR LOWERING OF UTILITIES SHALL BE COORDINATED BY THE CONTRACTOR.

THE CONTRACTOR SHALL BE RESPONSIBLE FOR THE PROTECTION OF ALL UNDERGROUND OR SURFACE UTILITIES EVEN THOUGH THEY MAY NOT BE SHOWN ON THE PLANS. ANY UTILITY THAT IS DAMAGED DURING CONSTRUCTION SHALL BE REPAIRED OR REPLACED AT THE CONTRACTOR'S EXPENSE TO THE SATISFACTION OF THE ENGINEER OR VILLAGE.

THE CONTRACTOR SHALL NOTIFY THE VILLAGE PUBLIC WORKS ADMINISTRATOR AT LEAST 48 HOURS IN ADVANCE OF BEGINNING WORK TO OBTAIN VILLAGE UTILITY LOCATIONS AND SHALL COORDINATE ALL CONSTRUCTION OPERATIONS WITH THE ENGINEER.

MATERIALS RESULTING FROM THE REMOVAL OF PAVEMENT, DRIVEWAYS, CURB AND GUTTER, HOT-MIX ASPHALT SURFACES, ETC. SHALL BE REMOVED AT THE END OF EACH DAY TO AN APPROVED SITE. IN THE JUDGMENT OF THE VILLAGE, SHOULD IT BE NECESSARY TO REMOVE SUCH MATERIALS, THE VILLAGE WILL HAVE THE MATERIAL REMOVED AND THE CONTRACTOR WILL BE BILLED (CHARGED) ACCORDINGLY.

THE CONTRACTOR MAY OBTAIN MUNICIPAL WATER IN BULK, AT NO CHARGE, AS LONG AS THERE IS NOT A "WATERING BAN" IN EFFECT. THE INDISCRIMINATE USE OF FIRE HYDRANTS IS STRICTLY PROHIBITED. WATER FOR CONSTRUCTION SHALL BE METERED OR OTHERWISE ACCOUNTED FOR AND A DAILY LOG MAINTAINED. THE CONTRACTOR SHALL PROVIDE THE WATER TRUCK AND DRIVER REQUIRED TO OBTAIN AND TRANSPORT THIS WATER. THE VILLAGE RESERVES THE RIGHT TO RESTRICT OR REFUSE THE USE OF VILLAGE WATER IF DEEMED NECESSARY.

IT WILL BE THE CONTRACTOR'S RESPONSIBILITY TO NOTIFY RESIDENTS AND THE VILLAGE WHEN ACCESS TO THEIR DRIVEWAYS WILL BE TEMPORARILY CLOSED. THE CONTRACTOR SHALL DISTRIBUTE NOTICES PROVIDED BY THE VILLAGE TO RESIDENTS. EVERY EFFORT SHALL BE MADE TO ACCOMMODATE ACCESS TO THESE PROPERTIES INCLUDING KNOCKING ON DOORS WHEN DRIVEWAYS ARE ABOUT TO BE CLOSED.

THE CONTRACTOR SHALL PROTECT AND CAREFULLY PRESERVE ALL SECTION OR SUBSECTION MONUMENTS OR PROPERTY OR REFERENCE MARKERS UNTIL THE OWNERS, HIS AGENT OR AN AUTHORIZED SURVEYOR HAS WITNESSED OR OTHERWISE REFERENCED THEIR LOCATIONS.

ACCESS TO PRIVATE DRIVEWAYS SHALL BE PROVIDED AT ALL TIMES EXCEPT DURING ACTUAL CONSTRUCTION ADJACENT THERE TO. TEMPORARY RAMPS SHALL BE CONSTRUCTED AS NEEDED TO PROVIDE SUCH ACCESS, UTILIZING CRUSHED STONE OR CRUSHED GRAVEL.

THE CONTRACTOR SHALL PROVIDE A REQUEST FOR MATERIAL TESTING TO THE ILLINOIS DEPARTMENT OF TRANSPORTATION BUREAU OF MATERIALS ORDER BOARD (PHONE (847) 705-4337) BY 4 PM, 24-HOURS IN ADVANCE OF CONSTRUCTION FOR INSPECTION OF ALL HOT-MIX ASPHALT AND CONCRETE MATERIALS USED ON THIS PROJECT.

THE CONTRACTOR SHALL PROVIDE AND INSTALL TWO (2) WEIGHTED SANDBAGS ON EACH TYPE I OR TYPE II BARRICADE USED. ONE (1) WEIGHTED SANDBAG SHALL BE PLACED ACROSS EACH BOTTOM RAIL.

EXISTING STREET LIGHTING UNITS TO REMAIN IN OPERATION AND TO BE MAINTAINED BY THE CONTRACTOR UNTIL NEW STREET LIGHTS ARE OPERATIONAL AND ACCEPTED BY THE VILLAGE.

THE CONTRACTOR SHALL ADJUST LOCATION OF LIGHT POLES AT INTERSECTION SO AS NOT TO BLOCK VIEW OF EXISTING TRAFFIC SIGNALS.

CARE IS TO BE TAKEN AS NOT TO DAMAGE ANY OF THE EXISTING TRAFFIC SIGNAL CONDUITS, DETECTORS AND EQUIPMENT. IF ANY OF THE TRAFFIC SIGNAL CONDUIT AND/OR EQUIPMENT IS DAMAGED THE CONTRACTOR SHALL REPAIR AND/OR REPLACE THE CONDUIT AND/OR EQUIPMENT AT NO COST TO THE COUNTY OR THE VILLAGE.

THE CONTRACTOR SHALL MAKE SPECIAL NOTE OF THE REQUIREMENT FOR BURIED WARNING TAPE, SPECIFIED AS PART OF "TRENCH AND BACKFILL FOR ELECTRICAL WORK". THE INSTALLATION OF THE TAPE SHALL BE INSPECTED AND APPROVED BY THE RESIDENT ENGINEER PRIOR TO BACKFILLING OR DURING PLOWING OPERATIONS, AS APPLICABLE.

THE CONTRACTOR SHALL BE RESPONSIBLE FOR THE ESTABLISHMENT OF FINISHED GRADE. THE RESIDENT ENGINEER MAY ASSIST THE CONTRACTOR, AS APPLICABLE, BUT THE RESPONSIBILITY FOR COORDINATING THE FINISHED GRADE ELEVATION WITH THE TOP OF FOUNDATION HEIGHTS AND THE LIGHT SHALL REMAIN WITH THE CONTRACTOR.

THE CONTRACTOR SHALL MAKE SPECIAL NOTE OF THE REQUIREMENTS FOR WIRE MARKERS AND SHALL TAG ALL WIRE ACCORDINGLY.

EQUIPMENT GROUND CONDUCTORS SHALL BE SPLICED AND/OR BONDED AT EACH LIGHT POLE OR OTHER PIECE OF EQUIPMENT.

CONDUIT AND UNIT DUCT MUST BE POSITIONED IN THE FIELD TO AVOID CONFLICT WITH TREES, BUSHES, DRAINS AND OTHER UTILITIES AND LANDSCAPING.

ALL DISTURBED AREAS WHERE RESTORATION IS NOT COVERED BY APPLICABLE SECTIONS OF THE SPECIAL PROVISIONS MUST BE RESTORED TO THE SATISFACTION OF THE ENGINEER. THE WORK MUST BE CONSIDERED INCIDENTAL TO THE CONTRACT. SEPARATE PAYMENT WILL NOT BE MADE.

THE EXACT LOCATIONS OF ALL UTILITIES SHALL BE VERIFIED BY THE CONTRACTOR BEFORE THE INSTALLATION OF ANY COMPONENTS OF THE LIGHTING SYSTEM. FOR THE LOCATIONS OF THE UTILITIES, CALL JULIE TOLL FREE AT 1-800-892-0123. IT IS THE CONTRACTOR'S RESPONSIBILITY TO LOCATE EXISTING TRAFFIC SIGNAL CABLES AND CONDUITS.

### SUMMARY OF QUANTITIES

ITEM NO.	DESCRIPTION	UNIT	QUANTITY Y030-1E
* 20101100	TREE TRUNK PROTECTION	EACH	5
67100100	MOBILIZATION	L SUM	1
70102630	TRAFFIC CONTROL AND PROTECTION, STANDARD 701601	L SUM	1
70102635	TRAFFIC CONTROL AND PROTECTION, STANDARD 701701	L SUM	1
80300100	LOCATING UNDERGROUND CABLE	FOOT	1000
80400100	ELECTRICAL SERVICE INSTALLATION	EACH	2
80400200	ELECTRICAL UTILITY SERVICE CONNECTION	LSUM	1
81000600	CONDUIT IN TRENCH, 2" DIA., GALVANIZED STEEL	FOOT	165
81018500	CONDUIT PUSHED, 2" DIA., GALVANIZED STEEL	FOOT	900
XX007275	UNIT DUCT, 600V, 4-1C NO. 6 1/C NO. 8 GROUND, (XLP-TYPE USE), 1 1/4" DIA. POLYETHYLENE	FOOT	4700
81702400	ELECTRIC CABLE IN CONDUIT, 600 V. (XLP-TYPE USE) 3-1/C NO. 2	FOOT	400
81900200	TRENCH AND BACKFILL FOR ELECTRICAL WORK	FOOT	165
82102250	LUMINAIRE, SODIUM VAPOR, HORIZONTAL MOUNT, 250 WATT	EACH	42
82500505	LIGHTING CONTROLLER, SPECIAL	EACH	2
XX007277	LIGHTPOLE, FIBERGLASS BREAKAWAY, DIRECT EMBED, 35 FT. M.H., TWIN 12 FT. MAST ARMS	EACH	21
* XX007278	PARKWAY RESTORATION	SQ.YD.	500
84200500	REMOVAL OF EXISTING LIGHTING UNIT, SALVAGE	EACH	2
84200600	REMOVAL OF EXISTING LIGHTING UNIT, NO SALVAGE	EACH	14

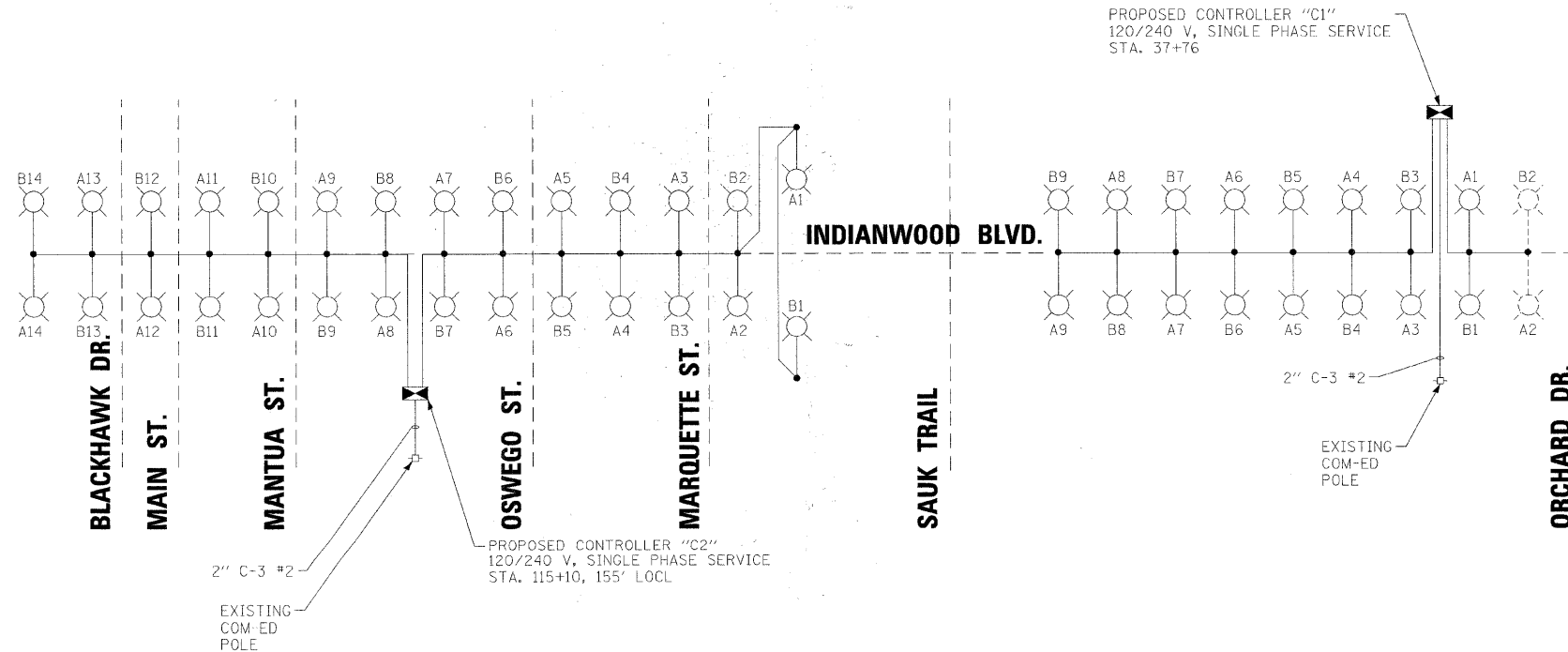
\*SPECIALTY ITEMS

### INDEX OF SHEETS

SHEET NO.	TITLE
1	COVER SHEET
2	GENERAL NOTES, SUMMARY OF QUANTITIES, INDEX OF SHEETS AND HIGHWAY STANDARDS
3 - 7	STREET LIGHTING PLANS
8	STREET LIGHTING DETAILS
9	DISTRICT ONE DETAIL TC-10: TRAFFIC CONTROL AND PROTECTION FOR SIDEROADS, INTERSECTIONS AND DRIVEWAYS
10	DISTRICT ONE DETAIL TC-14: TRAFFIC CONTROL AND PROTECTION AT TURN BAYS (TO REMAIN OPEN TO TRAFFIC)

### HIGHWAY STANDARDS

STANDARD NO.	TITLE
000001-05	STANDARD SYMBOLS, ABBREVIATIONS AND PATTERNS
701601-05	URBAN LANE CLOSURE, MULTI-LANE, 1W OR 2W WITH NON-TRAVERSABLE MEDIAN
701701-05	URBAN LANE CLOSURE, MULTI-LANE INTERSECTION
701901	TRAFFIC CONTROL DEVICES



6/19/2008 10:51:33 AM I:\p1\k1\061389\061389-GEN NOTES.sht  
 2008, BY BAXTER & WOODMAN, INC.  
 LICENSE NO. 001-1184-0002 - EXPIRES 4/30/2007

CONSULTANTS	REV. NO.	DATE	DESCRIPTION
* REFER TO EQUIPMENT MANUFACTURER'S SHOP DRAWINGS			
DRAWING FILE: ...061389-GEN NOTES.sht			



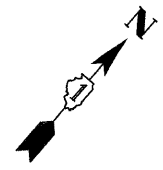
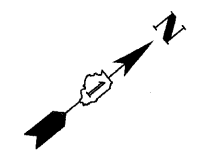
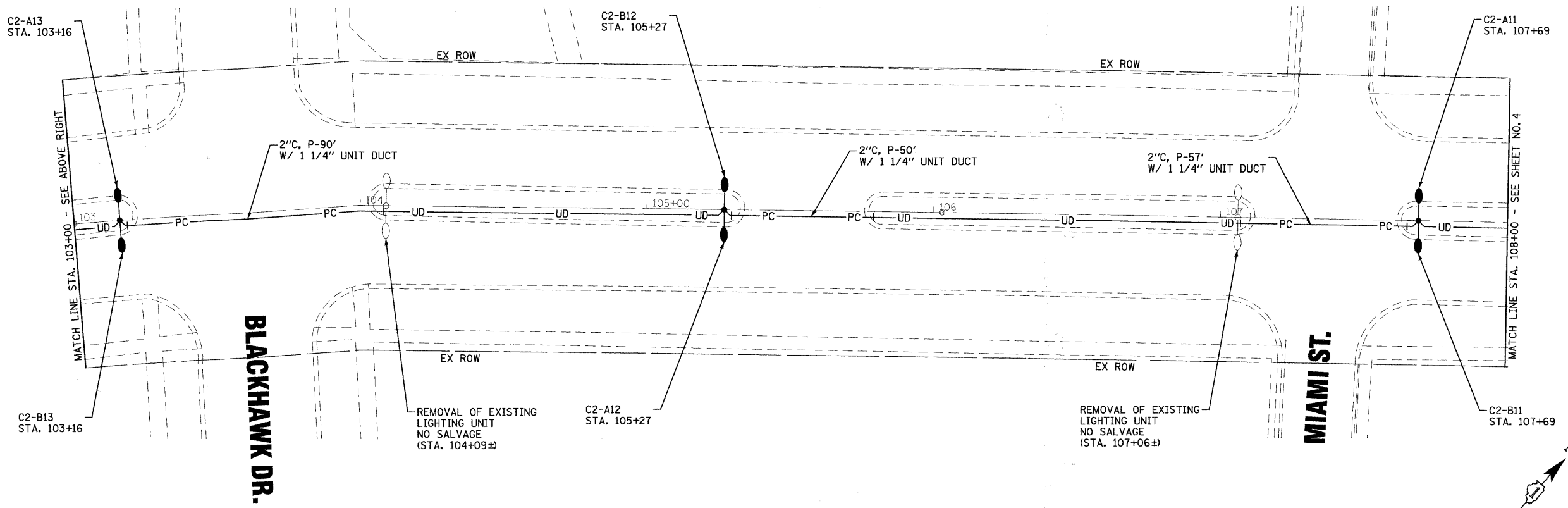
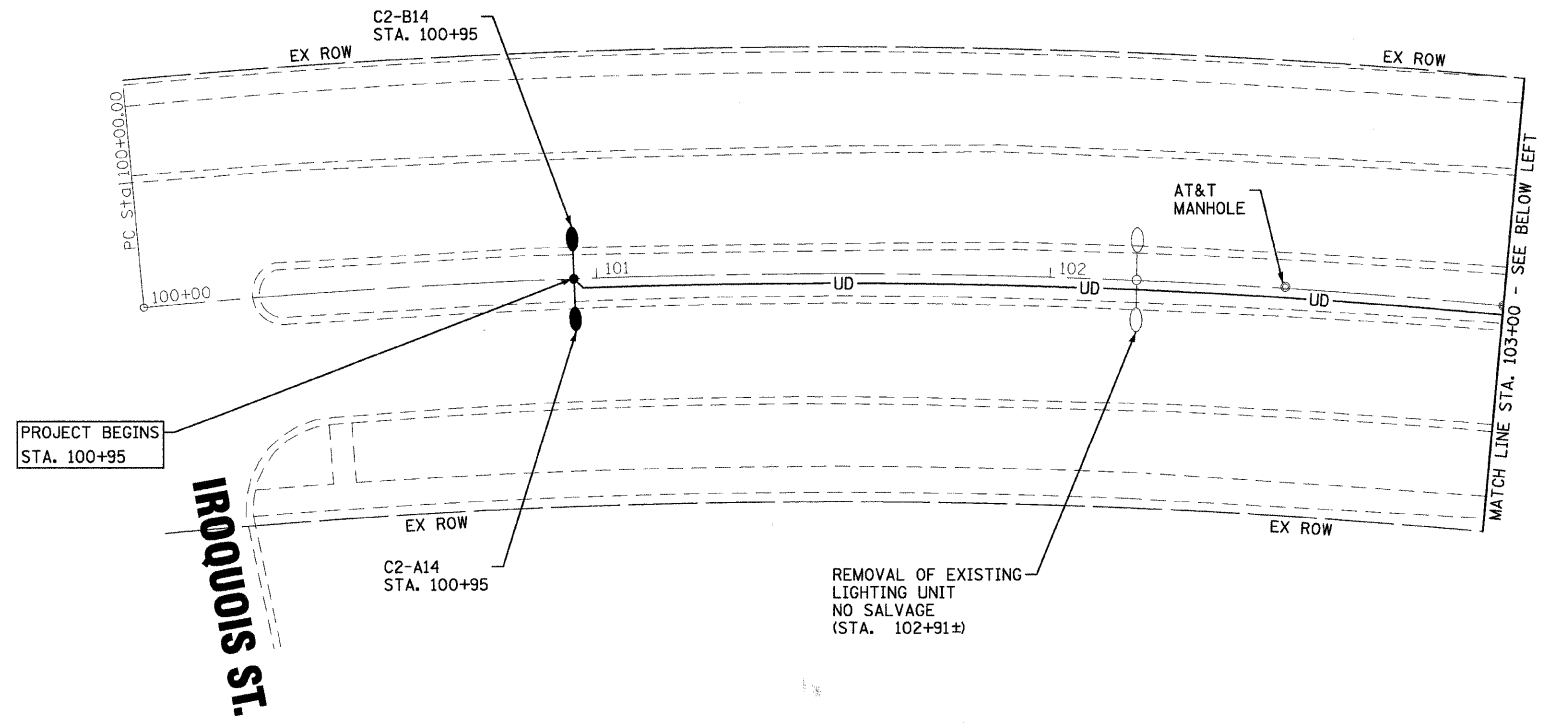
**Baxter & Woodman**  
 Crystal Lake, Illinois 815.459.1260  
 Burlington, Wisconsin 862.763.7834  
 Moline, Illinois 708.478.3090  
 DeKalb, Illinois 815.787.8111  
 Graylake, Illinois 847.223.5088  
 Rockford, Illinois 815.489.1551  
 Plainfield, Illinois 815.609.7425

**VILLAGE OF PARK FOREST, ILLINOIS**  
**INDIANWOOD BLVD**  
**BLACKHAWK DR TO ORCHARD DR**

**GENERAL NOTES, WIRING DIAGRAM,**  
**SUMMARY OF QUANTITIES,**  
**INDEX OF SHEETS & HIGHWAY STANDARDS**

DESIGNED BY	SCALE
JLR	1" = 20'
DRAWN BY	PROJECT NO.
BCD	061389
CHECKED BY	SHEET NO.
TMS	2 OF 10
DATE	
06-13-08	

F.A. RTE.	SECTION	COUNTY	TOTAL SHEETS	SHEET NO.
*	**	COOK	10	3
STA.	TO STA.			
FED. ROAD DIST. NO	ILLINOIS	FED AID PROJECT TCSP-061L (010)		
* NA		CONTRACT NO. 83991		
** 07-00091-00-LT				



6/19/2008 09:53:4 AM I:\p\k\11\06389\0\dms from mokemo\06389\_5L.dwg  
 © 2006 BY BAXTER & WOODMAN, INC.  
 LICENSE NO. 184-00231 - EXPIRES 7/30/2007

CONSULTANTS	REV. NO.	DATE	DESCRIPTION
* REFER TO EQUIPMENT MANUFACTURER'S SHOP DRAWINGS			
DRAWING FILE: ...061389_5La.sht			

**BAXTER & WOODMAN**  
 Consulting Engineers

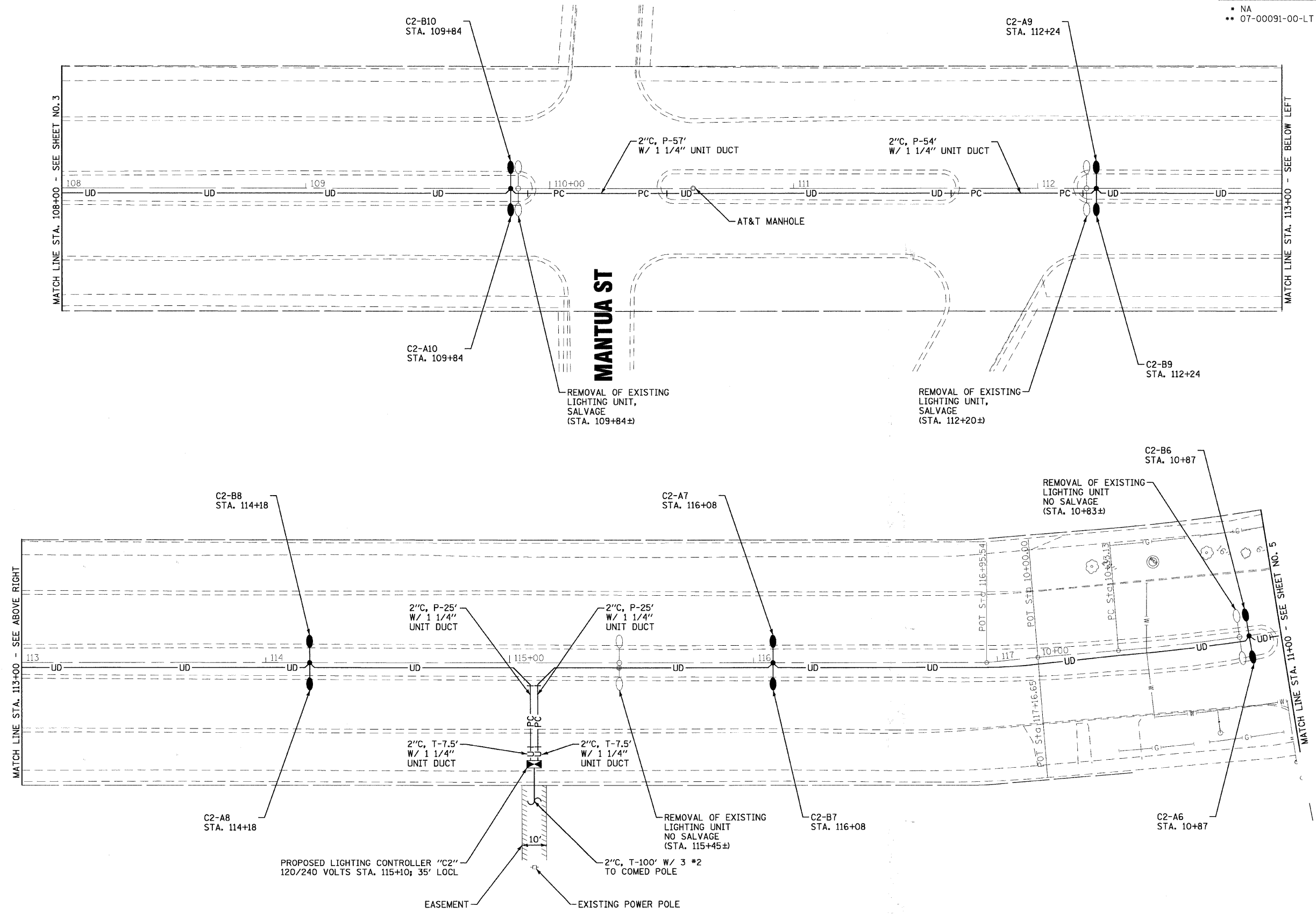
**Baxter & Woodman**  
 Crystal Lake, Illinois 815.459.1260  
 Burlington, Wisconsin 262.763.7854  
 Mokena, Illinois 708.478.2090  
 DeKalb, Illinois 815.787.9111  
 Graylake, Illinois 847.223.5088  
 Rockford, Illinois 815.488.1551  
 Plainfield, Illinois 815.609.7425

**VILLAGE OF PARK FOREST, ILLINOIS**  
**INDIANWOOD BLVD**  
**BLACKHAWK DR TO ORCHARD DR**

**STREET LIGHTING**  
**STA. 100+00 TO STA. 108+00**

DESIGNED BY	JLR	SCALE	1" = 20'
DRAWN BY	BCD	PROJECT NO.	061389
CHECKED BY	TMS	SHEET NO.	3 OF 10
DATE	06-13-08		

F.A. RTE.	SECTION	COUNTY	TOTAL SHEETS	SHEET NO.
•	••	COOK	10	4
STA.	TO STA.			
FED. ROAD DIST. NO.	ILLINOIS	FED AID PROJECT	TCSP-061L (010)	
* NA		CONTRACT NO. 83991		
•• 07-00091-00-LT				



6/19/2008 10:53:34 AM I:\p\k\k\061389.dwg From makema\061389.SLb.sht  
 2005 BY BAXTER & WOODMAN, INC.  
 LICENSE NO. 118C-00121 - EXPIRES 7/30/2007

CONSULTANTS	REV. NO.	DATE	DESCRIPTION
* REFER TO EQUIPMENT MANUFACTURER'S SHOP DRAWINGS			

DRAWING FILE: ...061389.SLb.sht

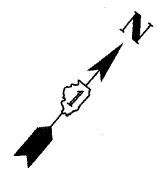
**BAXTER & WOODMAN**  
 Consulting Engineers

**Baxter & Woodman**  
 Crystal Lake, Illinois 815.459.1260  
 Burlington, Wisconsin 262.783.7834  
 Mahomet, Illinois 708.478.3090  
 DeKalb, Illinois 815.787.3111  
 Oroslope, Illinois 847.228.5088  
 Rockford, Illinois 815.489.1551  
 Plainfield, Illinois 815.609.7425

**VILLAGE OF PARK FOREST, ILLINOIS**  
**INDIANWOOD BLVD**  
**BLACKHAWK DR TO ORCHARD DR**

**STREET LIGHTING**  
**STA. 108 + 00 TO STA. 11 + 00**

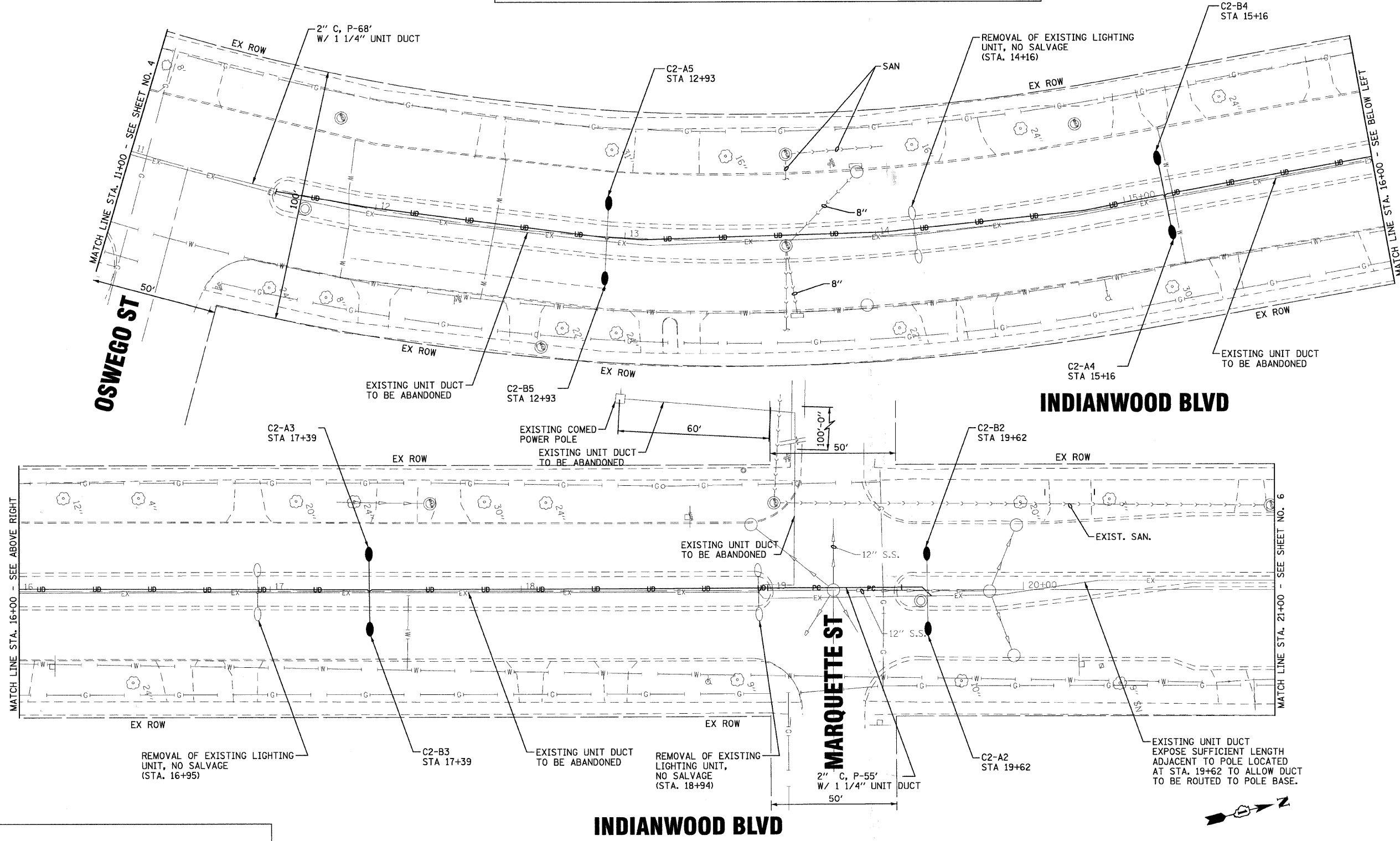
DESIGNED BY	JLR	SCALE	1" = 20'
DRAWN BY	BCD	PROJECT NO.	061389
CHECKED BY	TMS	SHEET NO.	4 OF 10
DATE	06-13-08		



F.A. RTE.	SECTION	COUNTY	TOTAL SHEETS	SHEET NO.
•	••	COOK	10	5
STA.	TO STA.			
FED. ROAD DIST. NO	ILLINOIS	FED AID PROJECT	TCSP-06IL (010)	
• NA		CONTRACT NO. 83991		
•• 07-00091-00-LT				

**LEGEND**

- EXISTING COM ED POWER POLE
- UD— 1 1/4" UNIT DUCT 4\*6 & 1\*8 GROUND OR AS INDICATED
- PC— 2" CONDUIT, PUSHED 8' LONG WITH 1 1/4" UNIT DUCT
- U— 2" CONDUIT, TRENCHED 4' LONG WITH 3\*2
- 2"C,T-4' W/3\*2 PROPOSED STREET LIGHT 35' MOUNTING HEIGHT, 250 WATT HPS, 240 VOLTS, W/12' ARM
- EXISTING LIGHTING UNIT REMOVE & SALVAGE
- SB SET BACK FROM BACK OF CURB
- EX— EXISTING STREET LIGHTING UNIT DUCT TO BE ABANDONED



**NOTE:**  
 ANY DAMAGE TO PAVEMENT, SIDEWALK, CURB, OR ANY OTHER PORTION OF THE ROADWAY NOT SPECIFICALLY TO BE REMOVED AND REPLACED SHALL BE REPAIRED OR REPLACED BY THE CONTRACTOR AT NO ADDITIONAL COST.

6/19/2008 10:53:35 AM I:\proj\fa\061389\0\dms from mokeno\061389\_SLI.dwg  
 © 2006 BY BAXTER & WOODMAN, INC.  
 ALL RIGHTS RESERVED. 4/27/2001

CONSULTANTS	REV. NO.	DATE	DESCRIPTION

\* REFER TO EQUIPMENT MANUFACTURER'S SHOP DRAWINGS

DRAWING FILE: ...061389\_SLI.dwg

**BAXTER & WOODMAN**  
 Consulting Engineers

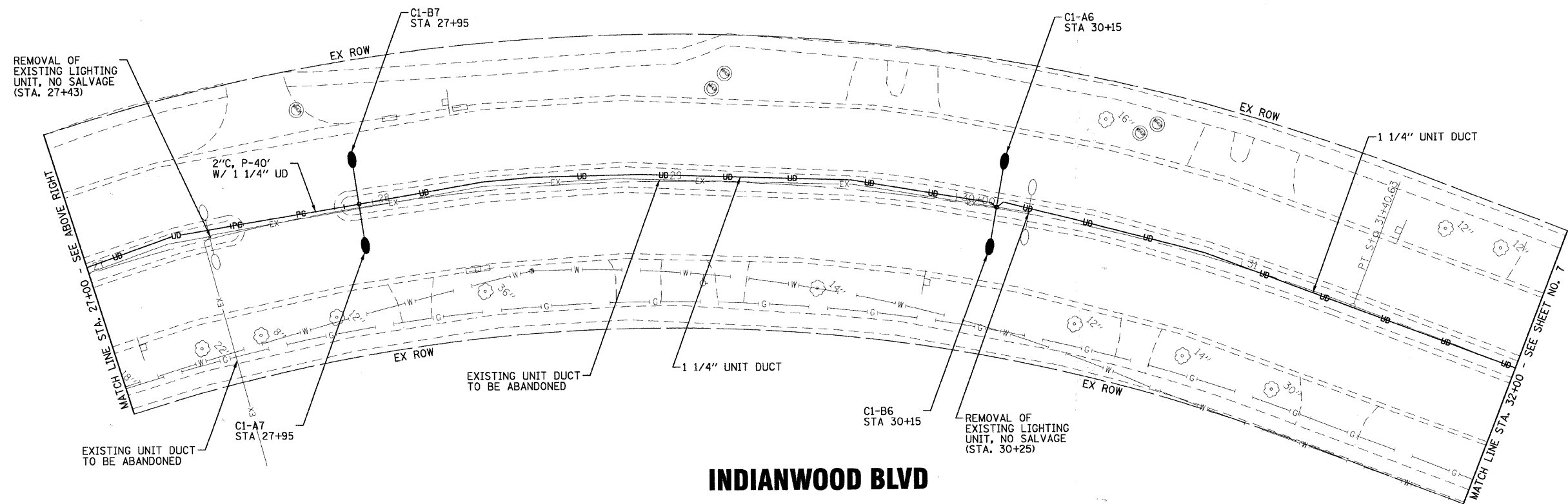
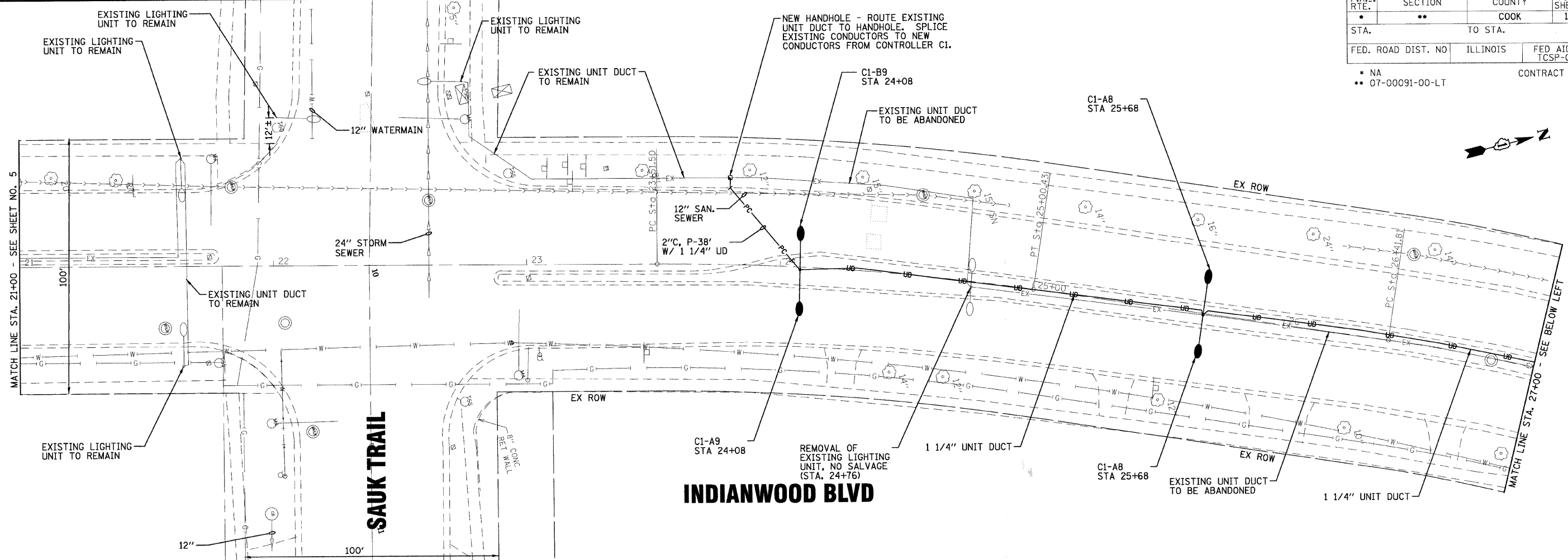
**Baxter & Woodman**  
 Crystal Lake, Illinois 815-459-1260  
 Burlington, Wisconsin 262-765-7834  
 Mokena, Illinois 708-478-3090  
 DeKalb, Illinois 815-787-3111  
 Grayslake, Illinois 847-223-5088  
 Rockford, Illinois 815-488-1551  
 Plainfield, Illinois 815-609-7425

**VILLAGE OF PARK FOREST, ILLINOIS**  
**INDIANWOOD BLVD**  
**BLACKHAWK DR TO ORCHARD DR**

**STREET LIGHTING PLAN**  
**STA. 11+00 TO STA. 21+00**

DESIGNED BY	JLR	SCALE	1" = 20'
DRAWN BY	BCD	PROJECT NO.	061389
CHECKED BY	TMS	SHEET NO.	5 OF 10
DATE	06-13-08		

F.A. RTE.	SECTION	COUNTY	TOTAL SHEETS	SHEET NO.
•	••	COOK	10	6
STA.	TO STA.			
FED. ROAD DIST. NO.	ILLINOIS	FED AID PROJECT TCSP-061L (010)		
• NA	CONTRACT NO. 83991			
• 07-00091-00-LT				



6/29/2008 10:35 AM I:\proj\11\06389.SL2.dgn from mokemo\06389.SL2.dgn  
 2008 BAXTER & WOODMAN, INC.  
 STATE OF ILLINOIS - PROFESSIONAL DESIGN FIRM  
 LICENSE NO. - 184-00121 - EXPIRES 4/30/2007

CONSULTANTS	REV. NO.	DATE	DESCRIPTION

\* REFER TO EQUIPMENT MANUFACTURER'S SHOP DRAWINGS

DRAWING FILE: ...061389\_SL2.dgn

**BAXTER & WOODMAN**  
 Consulting Engineers

**Baxter & Woodman**  
 Crystal Lake, Illinois 815.489.1280  
 Burlington, Wisconsin 952.763.7834  
 Mokena, Illinois 708.478.2090  
 DeKalb, Illinois 815.787.3111  
 Graylake, Illinois 847.223.5088  
 Rockford, Illinois 815.489.1551  
 Plainfield, Illinois 815.609.7425

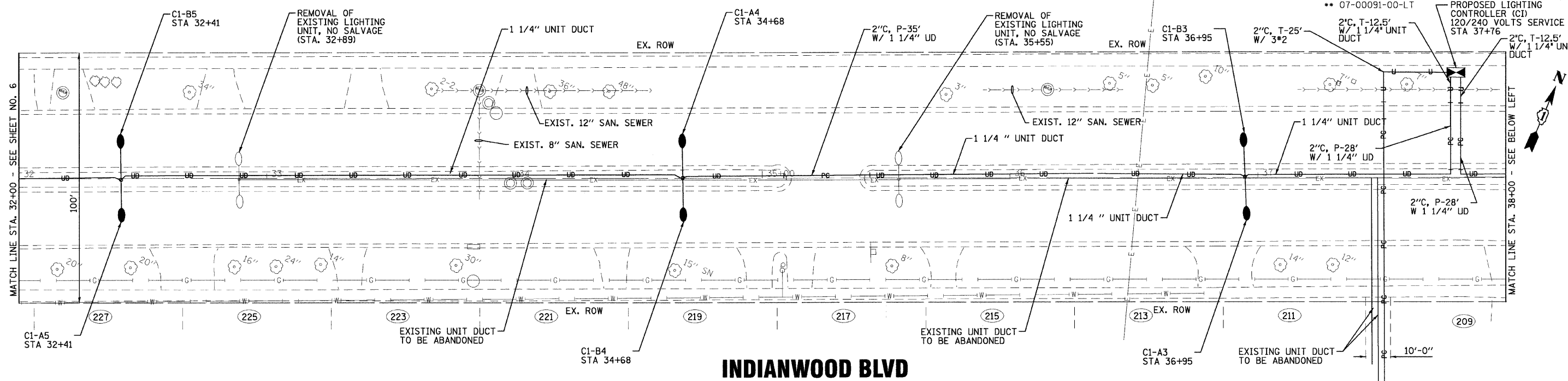
**VILLAGE OF PARK FOREST, ILLINOIS**  
**INDIANWOOD BLVD**  
**BLACKHAWK DR TO ORCHARD DR**

**STREET LIGHTING PLAN**  
**STA. 21+00 TO STA. 32+00**

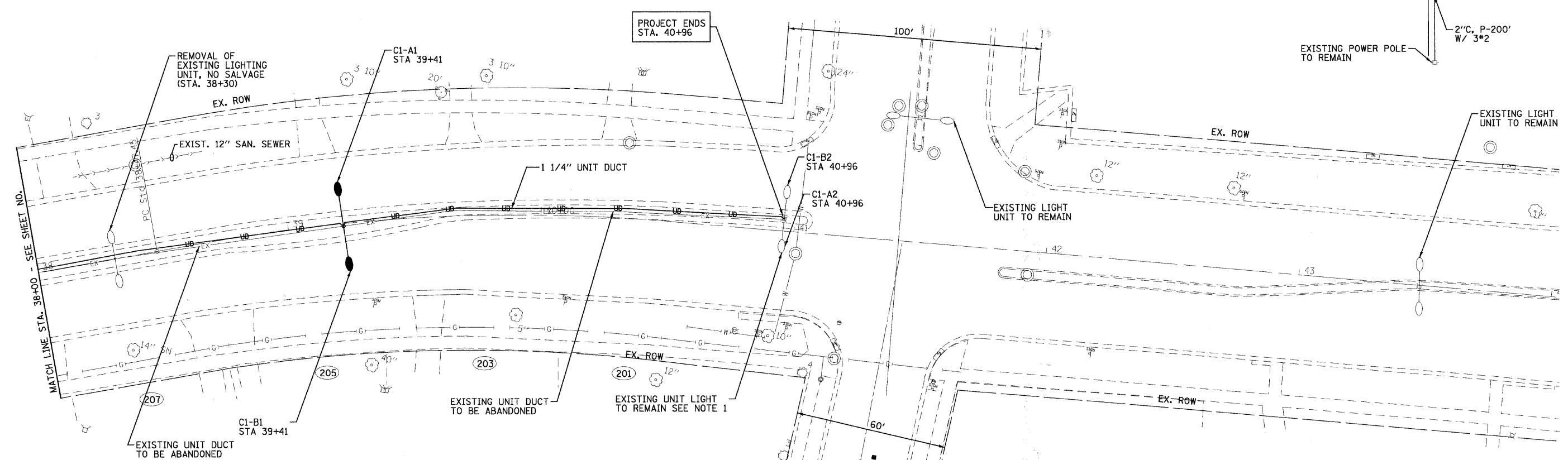
DESIGNED BY	JLR	SCALE	1" = 20'
DRAWN BY	BCD	PROJECT NO.	061389
CHECKED BY	TMS	SHEET NO.	6 OF 10
DATE	06-13-08		

F.A. RTE.	SECTION	COUNTY	TOTAL SHEETS	SHEET NO.
•	••	COOK	10	7
STA.	TO STA.			
FED. ROAD DIST. NO	ILLINOIS	FED AID PROJECT	TCSP-061L (010)	

CONTRACT NO. 83991  
 NA  
 07-00091-00-LT  
 PROPOSED LIGHTING CONTROLLER (CI) 120/240 VOLTS SERVICE STA 37+76



**INDIANWOOD BLVD**



**ORCHARD DR.**

**INDIANWOOD BLVD**

NOTE:  
 1. EXISTING LIGHT UNIT TO REMAIN. DISCONNECT AND REMOVE EXISTING WIRING, INSTALL NEW UNIT DUCT AND RECONNECT EXISTING LIGHT UNIT

6/19/2008 10:53:37 AM I:\p\k\11\061389\_40\dwgns from mokena\061389\_SL3.dwg  
 2005, BY BAXTER & WOODMAN, INC.  
 LICENSE NO. 061-000000-EXPRES 2/20/2001

CONSULTANTS	REV. NO.	DATE	DESCRIPTION

\* REFER TO EQUIPMENT MANUFACTURER'S SHOP DRAWINGS

DRAWING FILE: ...\\061389\_SL3.shp



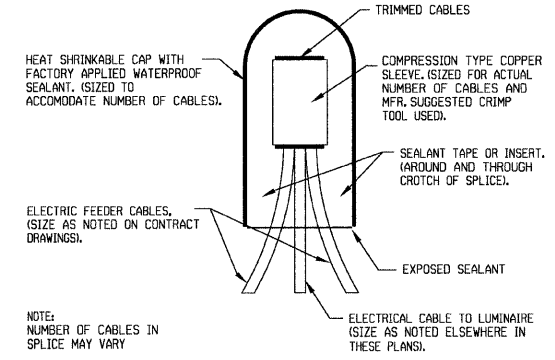
**Baxter & Woodman**  
 Crystal Lake, Illinois 815.459.1260  
 Burlington, Wisconsin 862.763.7834  
 Chicago, Illinois 708.478.9090  
 DeKalb, Illinois 815.787.3111  
 Graylake, Illinois 847.223.5088  
 Rockford, Illinois 815.498.1551  
 Plainfield, Illinois 815.609.7425

**VILLAGE OF PARK FOREST, ILLINOIS**  
**INDIANWOOD BLVD**  
**BLACKHAWK DR TO ORCHARD DR**

**STREET LIGHTING PLAN**  
**STA 32+00 TO STA 44+00**

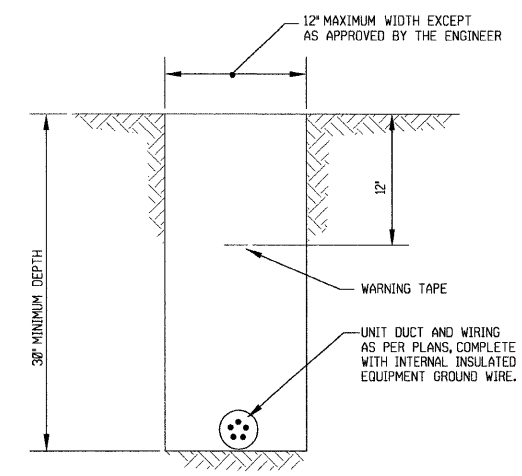
DESIGNED BY	JLR	SCALE	1" = 20'
DRAWN BY	BCD	PROJECT NO.	061389
CHECKED BY	TMS	SHEET NO.	7 OF 10
DATE	06-13-08		





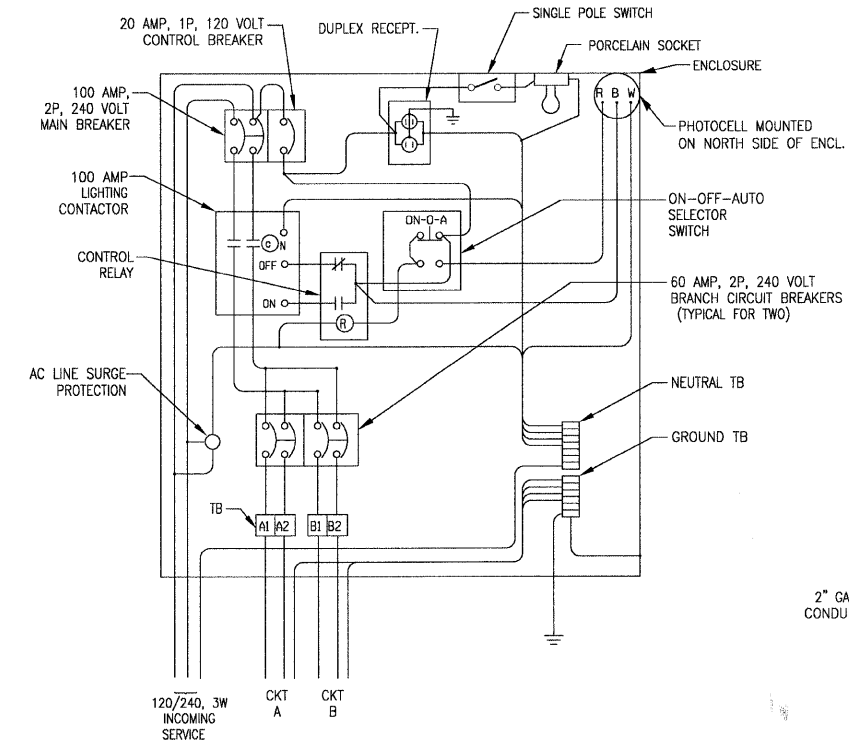
**SPLICING ELECTRICAL CABLES**  
BASIC MATERIALS AND METHODS

NO SCALE



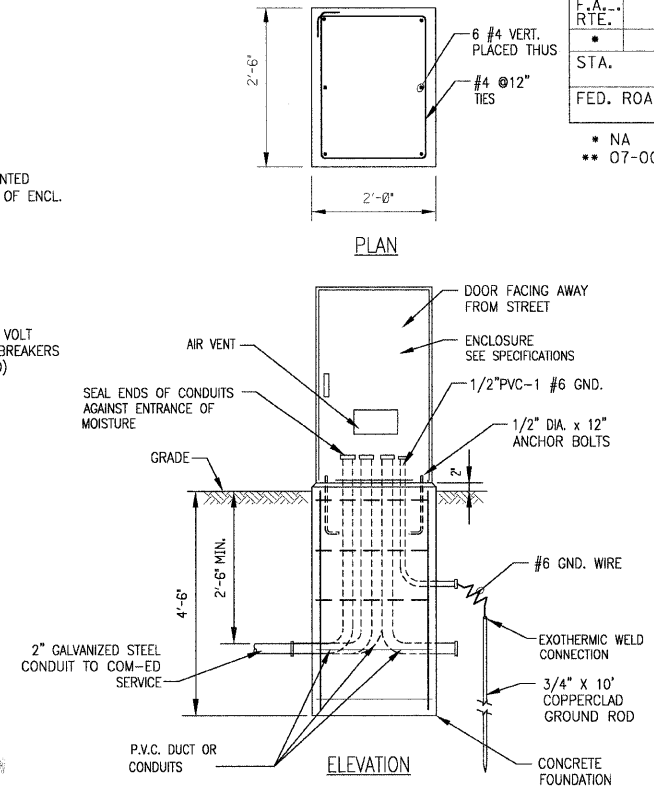
**TYPICAL WIRING IN TRENCH DETAIL**

NO SCALE



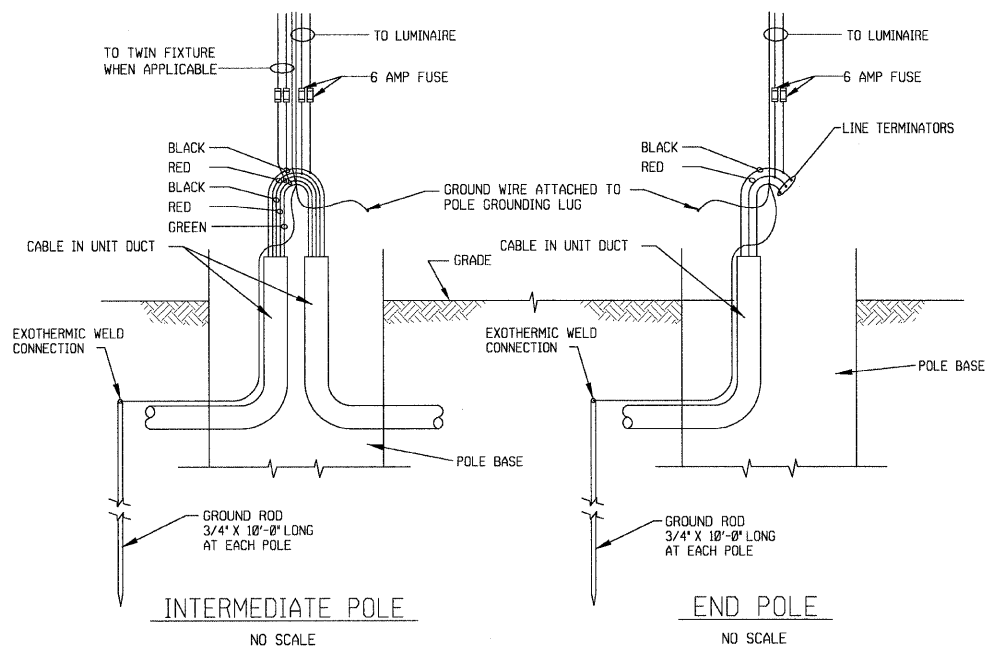
**LIGHTING CONTROLLER C1 & C2 WIRING DIAGRAM**

NO SCALE

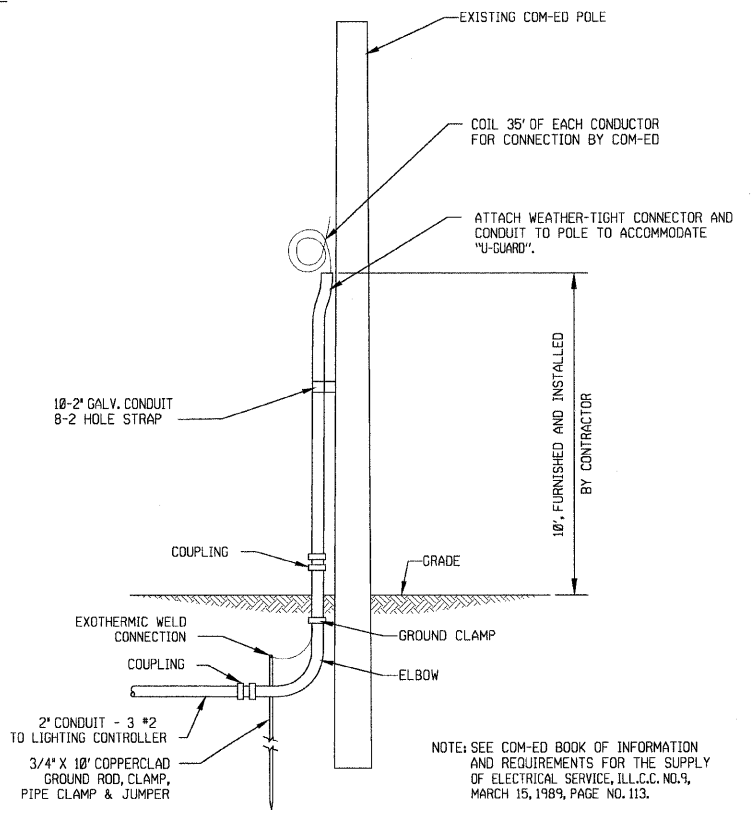


**LIGHTING CONTROLLER AND FOUNDATION DETAIL**

NO SCALE

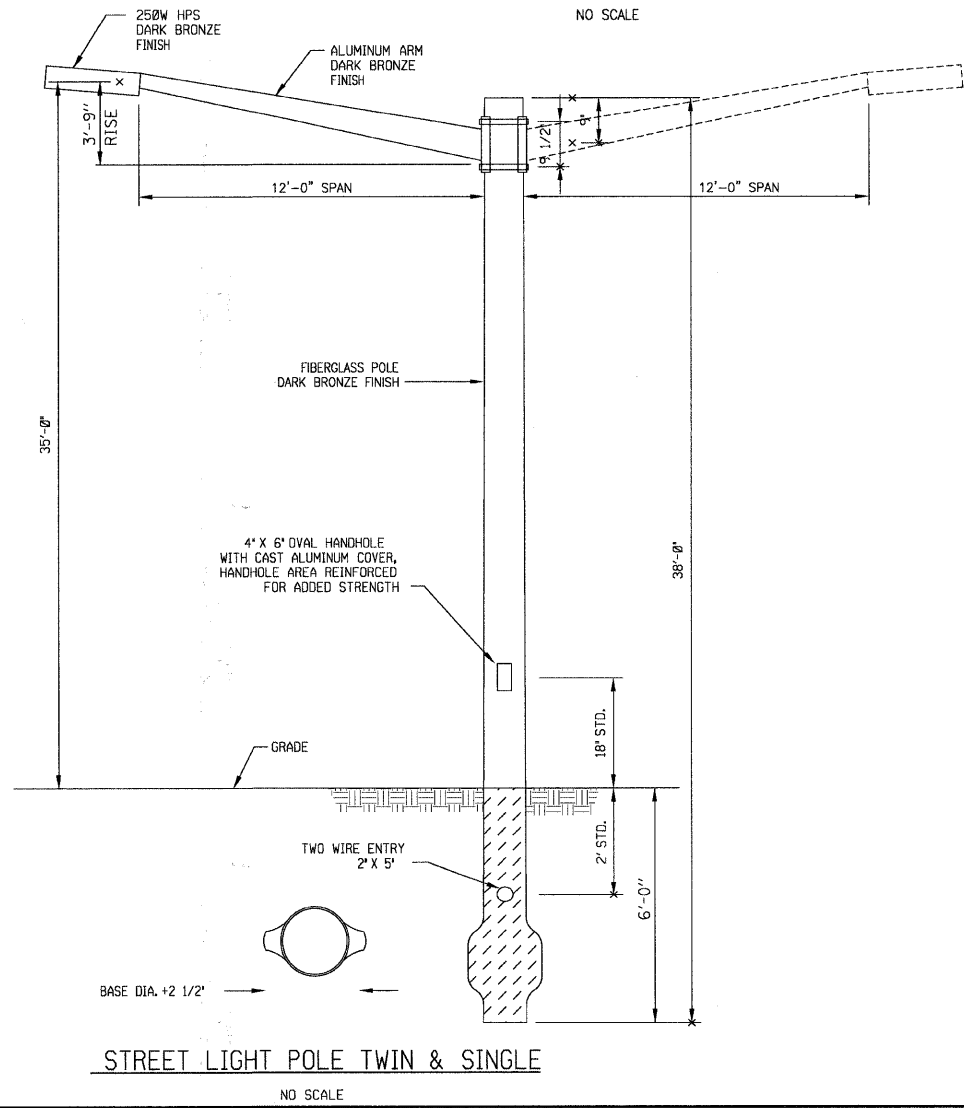


NOTE: INSTALL LIGHT POLE IN ACCORDANCE WITH MANUFACTURER'S RECOMMENDATIONS. PROVIDE 6 INCHES OF COARSE GRAVEL IN BOTTOM OF AUGERED HOLE FOR DRAINAGE AND SUPPORT, AUGER HOLE LARGE ENOUGH TO ACCOMMODATE THE BUTT OF THE POLE, BACKFILL HOLE AROUND POLE WITH CRUSHED LIME STONE SCREENINGS COMPACTED BY MACHINE OR HAND TAMPING IN 6-INCH LAYERS, ADD 1/2 BAG OF DRY CEMENT TO TAMPING MIXTURE AROUND POLE IF SOIL CONDITIONS REQUIRE, PLUMB AND ALIGN POLE IN A VERTICAL POSITION ONCE POLE IS SELF-SUPPORTING.



**COM-ED OVERHEAD CONNECTION POLE**

NO SCALE



**STREET LIGHT POLE TWIN & SINGLE**

NO SCALE

6/19/2008 10:49:38 AM I:\proj\11\061389\40\dwg\m\makend\061389-DETALS.dwg  
 2005, BY: BAXTER & WOODMAN, INC.  
 11-18-00021 - EXPRESS 4/20/2007

CONSULTANTS	REV. NO.	DATE	DESCRIPTION
* REFER TO EQUIPMENT MANUFACTURER'S SHOP DRAWINGS			
DRAWING FILE: ...061389-DETAILS.sht			

**BAXTER & WOODMAN**  
Consulting Engineers

**Baxter & Woodman**  
Crystal Lake, Illinois 815.459.1260  
Burlington, Wisconsin 862.763.7834  
Mukwonago, Illinois 708.478.9090  
DeKalb, Illinois 815.787.3111  
Gayslake, Illinois 847.223.5088  
Rockford, Illinois 815.489.1551  
Plainfield, Illinois 815.609.7425

**VILLAGE OF PARK FOREST, ILLINOIS**  
INDIANWOOD BLVD  
BLACKHAWK DR TO ORCHARD DR

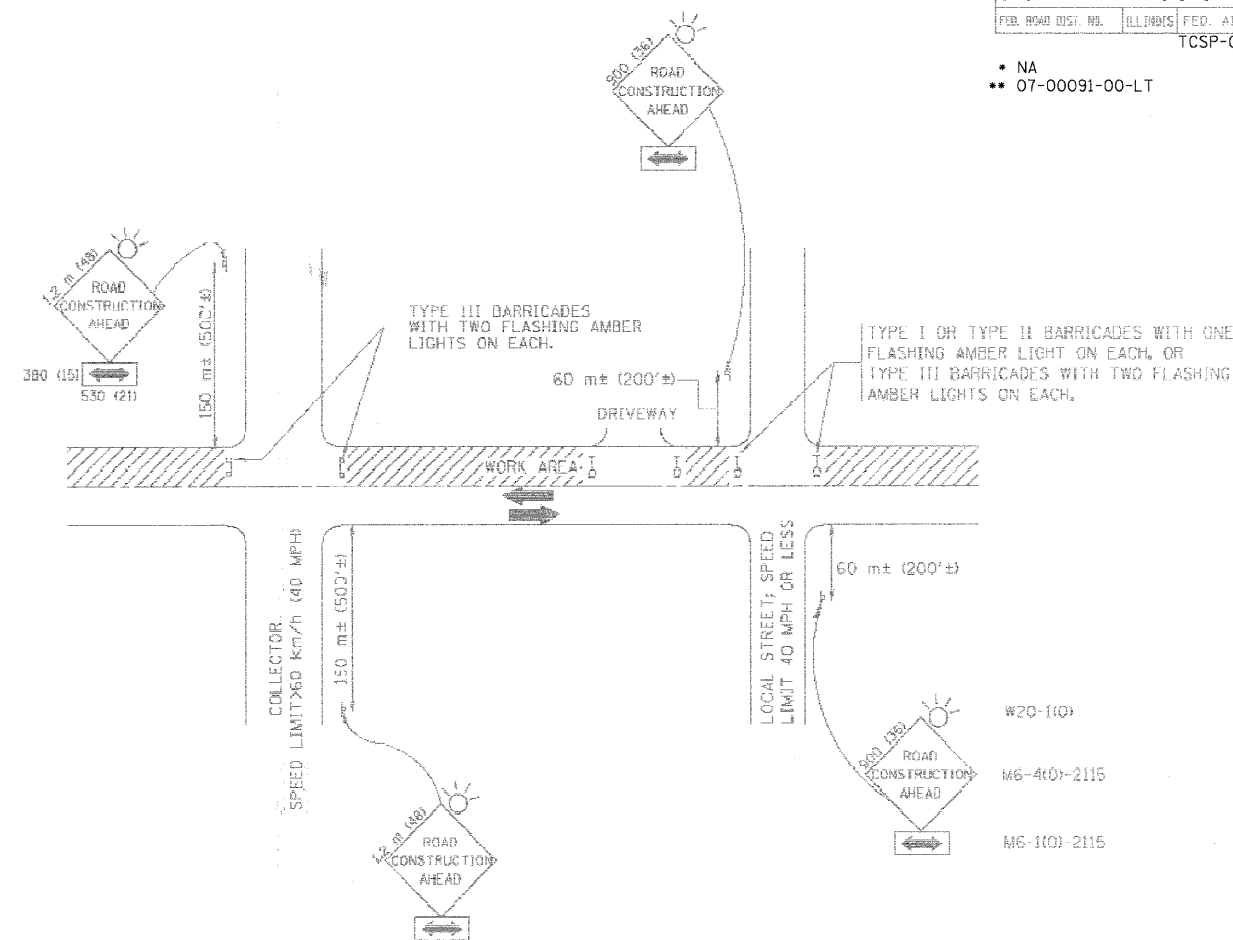
**STREET LIGHTING DETAILS**

DESIGNED BY	JLR	SCALE	1" = 20'
DRAWN BY	BCD	PROJECT NO.	061389
CHECKED BY	TMS	SHEET NO.	8 OF 10
DATE	06-13-08		



F.V. RTE.	SECTION	COUNTY	TOTAL SHEETS	SHEET NO.
		COOK	10	9
STA.		TO STA.		
FED. ROAD DIST. NO.	ILLINOIS	FED. AID PROJECT		
TCSP-061L (010)				

- NA
- 07-00091-00-LT



W20-110)  
M6-40)-2115  
M6-110)-2115

### TRAFFIC CONTROL AND PROTECTION FOR SIDE ROADS, INTERSECTIONS, AND DRIVEWAYS

#### NOTES:

A. FOR NO LANE RESTRICTION ON THE SIDE ROAD OR DRIVEWAYS

1. SIDE ROAD WITH A SPEED LIMIT OF 60 km/h (40 MPH) OR LESS AS SHOWN ON THE DRAWING AND AS DIRECTED BY THE ENGINEER:
  - a) ONE ROAD CONSTRUCTION AHEAD SIGN 900x900 (36x36) WITH A FLASHER AND FLAG MOUNTED ON IT APPROXIMATELY 60 m (200') IN ADVANCE OF THE MAIN ROUTE.
  - b) THE CLOSED PORTION OF THE MAIN ROUTE SHALL BE PROTECTED BY BLOCKING WITH TYPE I, TYPE II OR TYPE ID BARRICADES, 1/3 OF THE CROSS SECTION OF THE CLOSED PORTION.
2. SIDE ROAD WITH A SPEED LIMIT GREATER THAN 60 km/h (40 MPH) AS SHOWN ON THE DRAWING AND AS DIRECTED BY THE ENGINEER:
  - a) ONE ROAD CONSTRUCTION AHEAD SIGN 1.2 m x 1.2 m (48x48) WITH A FLASHER MOUNTED ON IT APPROXIMATELY 150 m (500') IN ADVANCE OF THE MAIN ROUTE.
  - b) THE CLOSED PORTION OF THE MAIN ROUTE SHALL BE PROTECTED BY BLOCKING WITH TYPE III BARRICADES, 1/2 OF THE CROSS SECTION OF THE CLOSED PORTION.
3. WHEN THE SIDE ROAD LIES BETWEEN THE BEGINNING OF THE MAINLINE SIGNING AND THE WORK ZONE, A SINGLE HEADED ARROW (M6-1) SHALL BE USED IN LIEU OF THE DOUBLE HEADED ARROW (M6-4).

B. FOR A LANE CLOSURE ON A SIDE ROAD OR DRIVEWAY:

- USE APPLICABLE PORTIONS OF THE TYPICAL APPLICATION OF TRAFFIC CONTROL DEVICES (STD. 70150), STD. 701606 OR THE APPROPRIATE STANDARD). THE SPACING OF SIGNS AND BARRICADES SHALL BE ADJUSTED FOR FIELD CONDITIONS AS DIRECTED BY THE ENGINEER. THE DIRECTIONAL ARROW SHALL BE COVERED OR REMOVED WHEN NO LONGER CONSISTENT WITH THE SIDE ROAD LANE CLOSURE.
- C. ADVANCE WARNING SIGNS ARE TO BE OMITTED ON DRIVEWAY UNLESS OTHERWISE NOTED.
- D. THE TRAFFIC CONTROL AND PROTECTION FOR SIDE ROADS, INTERSECTIONS, AND DRIVEWAYS SHALL BE INCIDENTAL TO THE COST OF SPECIFIED TRAFFIC CONTROL STANDARDS OR ITEMS.

REVISIONS	
NAME	DATE
LHA	6/89
T. RAMMACHER	09/08/94
J. OBERLE	10/18/95
A. HOUSEH	03/06/96
A. HOUSEH	10/15/96
T. RAMMACHER	01/06/00

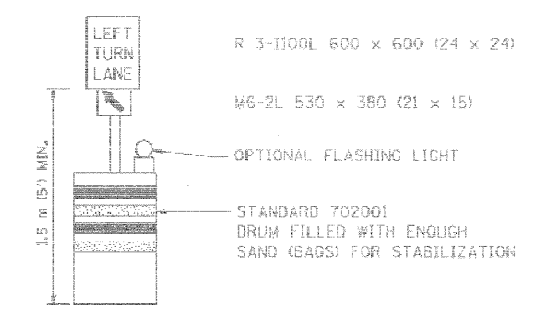
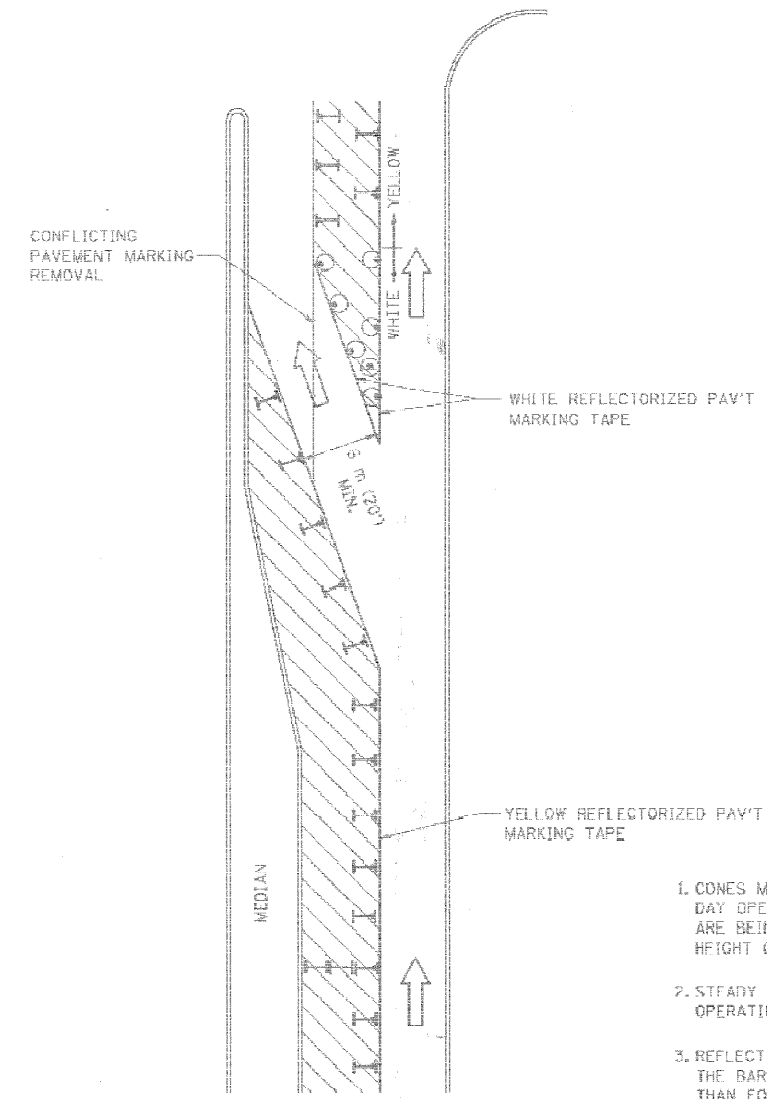
ILLINOIS DEPARTMENT OF TRANSPORTATION  
TRAFFIC CONTROL AND PROTECTION  
FOR  
SIDE ROADS, INTERSECTIONS, AND  
DRIVEWAYS

SCALE: DATE: 2/15/2006  
DRAWN BY: CHECKED BY: TC-10  
REVISION DATE: 01/06/00

PLT DATE = 2/15/2006  
FILE NAME = s:\vtd\pds\m61e.dgn  
PLT SCALE = 80x80 / IN.  
USER NAME = gschlarost

F.A. R/L	SECTION	COUNTY	TOTAL SHEETS	SHEET NO.
		COOK	10	10
STA.	TO STA.			
ILLINOIS FED. AID PROJECT				
TCSP-061L (010)				

- NA
- 07-00091-00-LT



**GENERAL NOTES**

1. CONES MAY BE SUBSTITUTED FOR BARRICADES OR DRUMS AT HALF THE SPACING DURING DAY OPERATIONS. CONES SHALL BE A MINIMUM OF 710 (28") IN HEIGHT. WHEN CONES ARE BEING USED, THE "LEFT TURN LANE" SIGN MAY BE SKID MOUNTED AT A MINIMUM HEIGHT OF 1.5 m (5').
2. STEADY BURNING LIGHTS WILL NOT BE REQUIRED ON BARRICADES OR DRUMS FOR DAY OPERATIONS. ALL LIGHTS SHALL BE MONODIRECTIONAL.
3. REFLECTORIZED TEMPORARY PAVEMENT MARKING TAPE SHALL BE PLACED THROUGHOUT THE BARRICADED AREA OF EACH TURN BAY WHERE THE CLOSURE TIME IS GREATER THAN FOURTEEN DAYS.
4. THIS APPLICATION ALSO APPLIES WHEN WORK IS BEING PERFORMED IN THE RIGHT LANE(S) AND THE RIGHT TURN BAY IS TO REMAIN OPEN. UNDER THIS CONDITION, "RIGHT TURN LANE" R3 100 600 x 600 (24 x 24) AND M6 2R 530 x 380 (21 x 15) SHALL BE USED.
5. THESE CONTROLS SHALL SUPPLEMENT MAINLINE TRAFFIC CONTROL FOR LANE CLOSURES.
6. LONGITUDINAL DIMENSIONS MAY BE ADJUSTED TO FIT FIELD CONDITIONS.
7. FORM BT 725 IS REQUIRED.
8. TRAFFIC CONTROL AND PROTECTION AT TURN BAYS (TO REMAIN OPEN TO TRAFFIC) SHALL BE INCLUDED IN THE COST SPECIFIED TRAFFIC CONTROL STANDARDS OR ITEMS.

**LEGEND**

- WORK AREA
- LANE OPEN TO TRAFFIC
- TYPE I OR II BARRICADE WITH STEADY BURN LIGHT
- DRUM WITH STEADY BURN LIGHT
- DRUM WITH SIGN (WITH OPTIONAL FLASHING LIGHT) SEE DETAIL
- TYPE I OR II CHECK BARRICADE WITH FLASHING LIGHT

All dimensions are in millimeters (inches) unless otherwise shown.

REVISIONS	
NAME	DATE
T. RAMMACHER	09/08/94
A. HOUSEH	11/07/95
A. HOUSEH	10/12/96
T. RAMMACHER	01/06/00

ILLINOIS DEPARTMENT OF TRANSPORTATION  
**TRAFFIC CONTROL AND PROTECTION  
 AT TURN BAYS  
 (TO REMAIN OPEN TO TRAFFIC)**

SCALE: NONE  
 DATE: 2/15/2006  
 DRAWN BY  
 CHECKED BY LHA  
 TC-14  
 REVISION TABLE (2/15/2006)

PLOT DATE: 2/15/2006  
 FILE NAME: W:\MANSOUR\061L.dwg  
 PLOT SCALE: 1/8"=1'-0"  
 USER NAME: jrammache