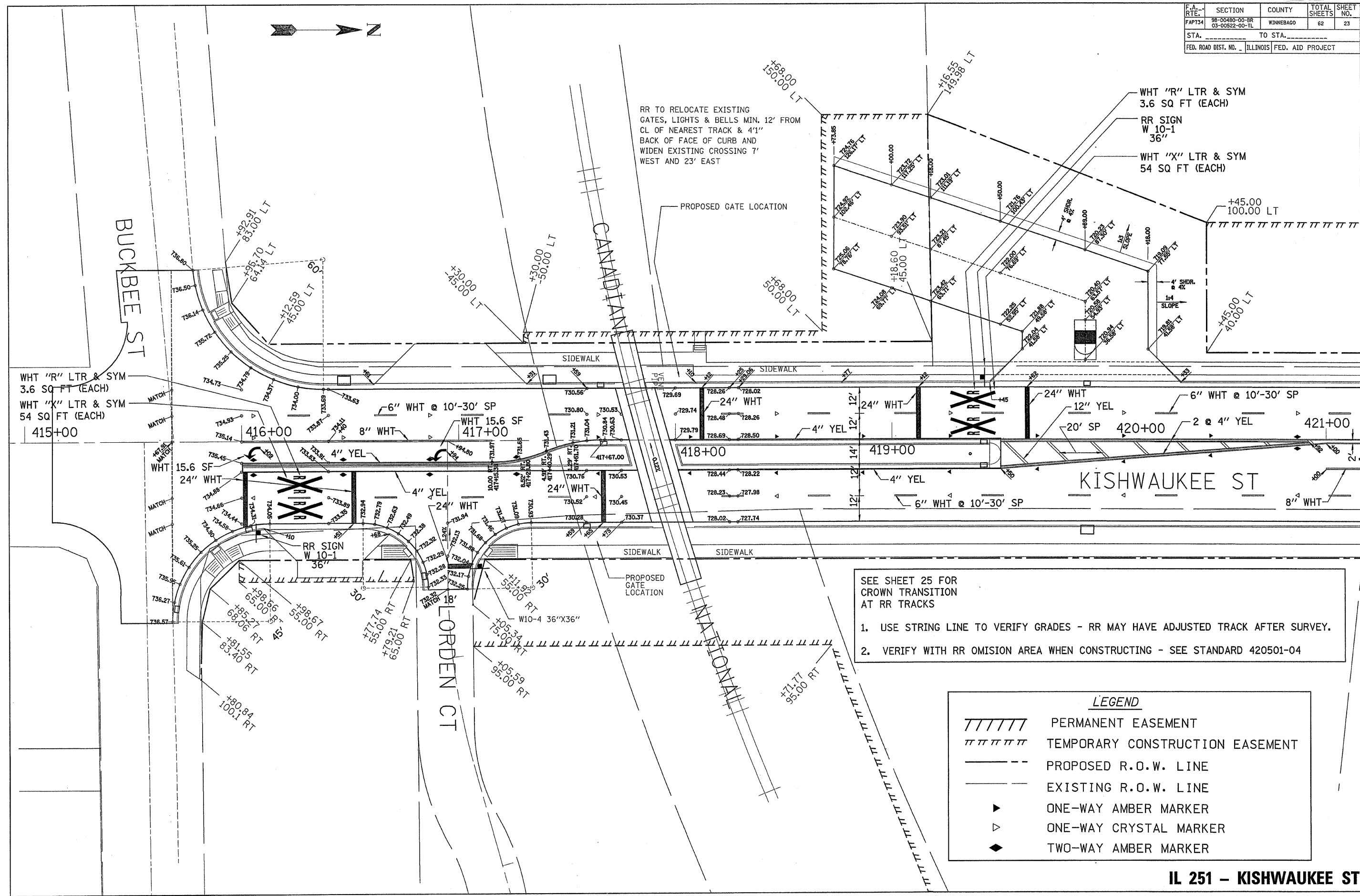


F.A. RTE.	SECTION	COUNTY	TOTAL SHEETS	SHEET NO.
FAPT34	98-00480-00-BR 03-00522-00-TL	WINNEBAGO	62	23
STA.		TO STA.		
FED. ROAD DIST. NO.		ILLINOIS FED. AID PROJECT		



RR TO RELOCATE EXISTING GATES, LIGHTS & BELLS MIN. 12' FROM CL OF NEAREST TRACK & 4'1" BACK OF FACE OF CURB AND WIDEN EXISTING CROSSING 7' WEST AND 23' EAST

PROPOSED GATE LOCATION

SIDEWALK

SIDEWALK

SIDEWALK

SIDEWALK

PROPOSED GATE LOCATION

SEE SHEET 25 FOR CROWN TRANSITION AT RR TRACKS

1. USE STRING LINE TO VERIFY GRADES - RR MAY HAVE ADJUSTED TRACK AFTER SURVEY.
2. VERIFY WITH RR OMISION AREA WHEN CONSTRUCTING - SEE STANDARD 420501-04

LEGEND

TTTTTT	PERMANENT EASEMENT
TTTTTT	TEMPORARY CONSTRUCTION EASEMENT
---	PROPOSED R.O.W. LINE
---	EXISTING R.O.W. LINE
▶	ONE-WAY AMBER MARKER
▽	ONE-WAY CRYSTAL MARKER
◆	TWO-WAY AMBER MARKER

IL 251 - KISHWAUKEE ST.

PAVEMENT MARKING, ROW, EASEMENT DETAILS & PAVEMENT ELEVATIONS