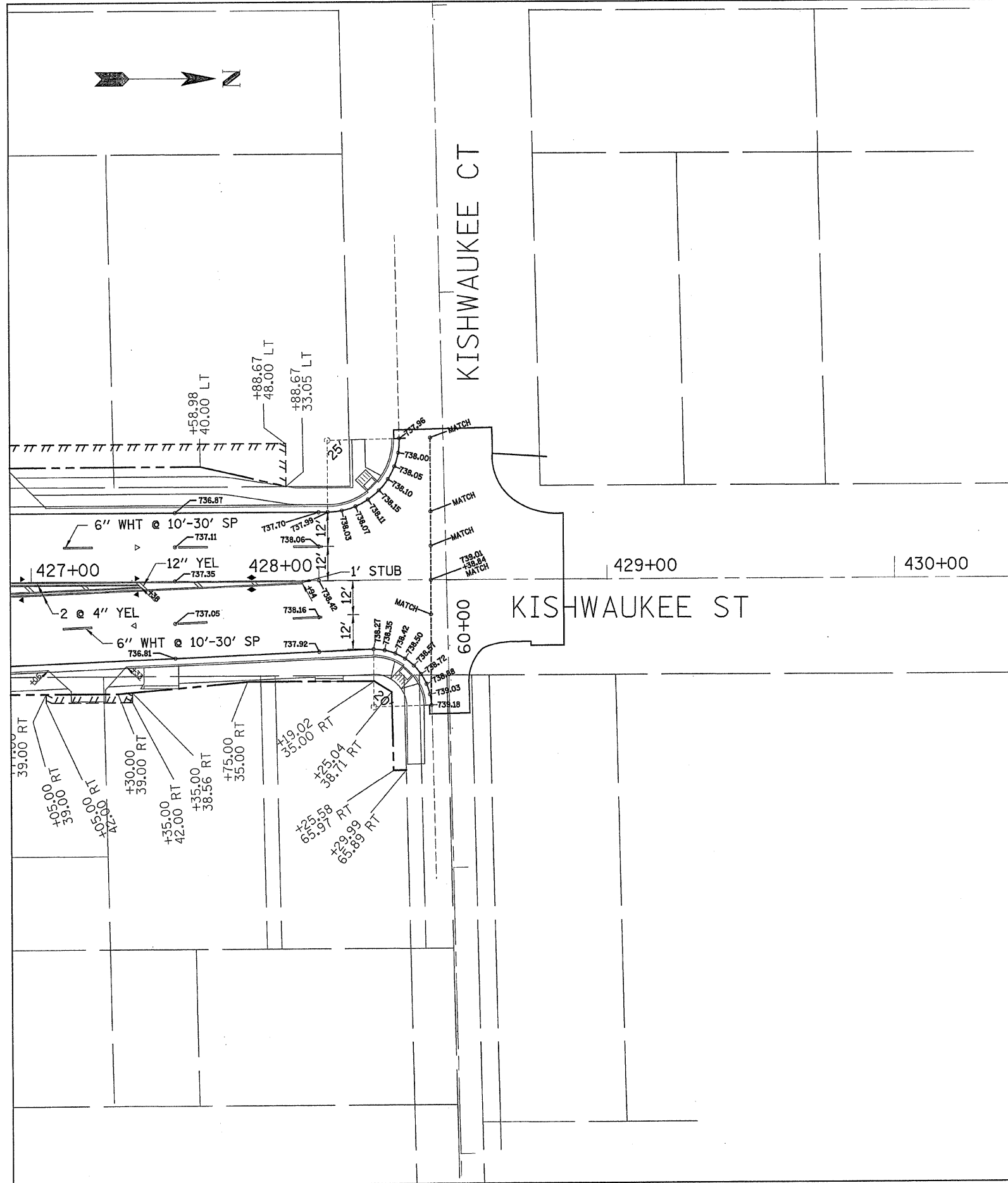


F.A. RTE.	SECTION	COUNTY	TOTAL SHEETS	SHEET NO.
FAP734	98-00480-00-BR 03-00522-00-TL	WINNEBAGO	62	25
STA.		TO STA.		
FED. ROAD DIST. NO.		ILLINOIS	FED. AID PROJECT	

CROWN TRANSITION AT RAILROAD

STA	PERCENT		LT		CL	RT		
	CROWN LT	CROWN RT	24	12	0	14	26	38
41758.84	2	-2	730.57	730.81	731.05	730.77	730.53	730.29
41759	1.9885	-1.9870	730.56	730.80	731.04	730.76	730.52	730.28
41759.05	1.9850	-1.9830	730.56	730.80	731.04	730.76	730.52	730.29
41760	1.9169	-1.9059	730.56	730.79	731.02	730.75	730.52	730.30
41765.46	1.5258	-1.4627	730.51	730.70	730.88	730.68	730.50	730.32
41767	1.4155	-1.3378	730.50	730.67	730.84	730.65	730.49	730.33
41772.32	1.0344	-0.9060	730.45	730.58	730.70	730.57	730.46	730.36
41775	0.8424	-0.6885	730.43	730.53	730.63	730.53	730.45	730.37
41782.24	0.3238	-0.1009	730.37	730.41	730.45	730.44	730.42	730.41
41782.4	0.3124	-0.0879	730.37	730.40	730.44	730.43	730.42	730.41
41784	0.1978	0.0419	730.34	730.37	730.39	730.40	730.40	730.41
41785.01	0.1254	0.1239	730.33	730.34	730.36	730.38	730.39	730.41
41785.02	0.1247	0.1247	730.33	730.35	730.36	730.38	730.39	730.41
41786	0.1247	0.1247	730.30	730.32	730.33	730.35	730.36	730.38
41788.85	0.1247	0.1247	730.20	730.22	730.23	730.25	730.26	730.28
41790.5	0.1247	0.1247	730.15	730.17	730.18	730.20	730.21	730.23
41794.5	0.1247	0.1247	730.00	730.02	730.03	730.05	730.06	730.08
41795.1	0.1247	0.1247	729.97	729.99	730.00	730.02	730.03	730.05
41797.23	0.2431	-0.0094	729.85	729.88	729.91	729.91	729.91	729.91
41800	0.3970	-0.1839	729.69	729.74	729.79	729.76	729.74	729.72
41801.24	0.4660	-0.2620	729.63	729.68	729.74	729.70	729.67	729.64
41808.06	0.8450	-0.6914	729.24	729.34	729.44	729.34	729.26	729.18
41825	1.7866	-1.7582	728.26	728.48	728.69	728.44	728.23	728.02
41828.83	1.9994	-1.9994	728.03	728.27	728.51	728.23	727.99	727.75
41828.84	2	-2	728.03	728.27	728.51	728.23	727.99	727.75
41829.06	2	-2	728.02	728.26	728.50	728.22	727.98	727.74



LEGEND	
TTTTTT	PERMANENT EASEMENT
TTTTTT	TEMPORARY CONSTRUCTION EASEMENT
---	PROPOSED R.O.W. LINE
---	EXISTING R.O.W. LINE
▶	ONE-WAY AMBER MARKER
▷	ONE-WAY CRYSTAL MARKER
◆	TWO-WAY AMBER MARKER

IL 251 - KISHWAUKEE ST.

PAVEMENT MARKING, ROW, EASEMENT DETAILS & PAVEMENT ELEVATIONS