

# PLANS FOR PROPOSED FEDERAL-AID BRIDGE REPLACEMENT & REHABILITATION PROGRAM

## TOWNSHIP BRIDGE PROGRAM NORTH GROVE ROAD (TR 89) SECTION 01-09114-00-BR DEKALB COUNTY - MAYFIELD ROAD DISTRICT PROJECT BROS-0037(045)

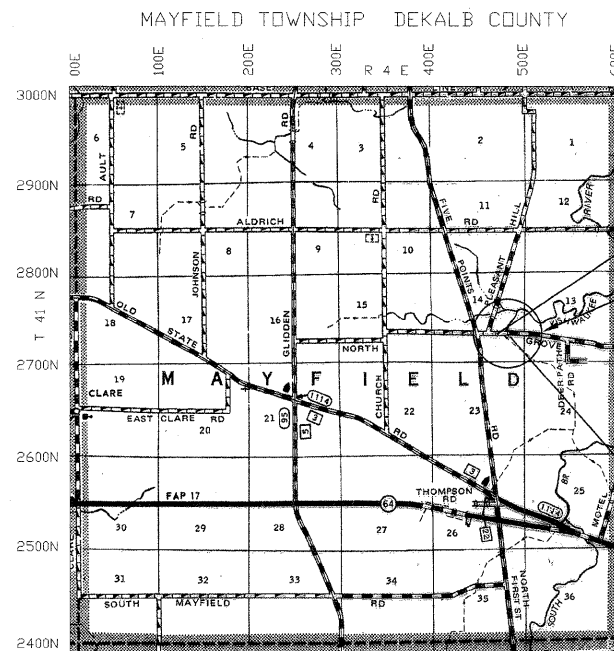
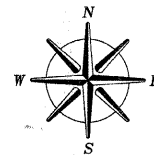
JOB NO. C-93-089-08

### INDEX OF SHEETS

1. COVER SHEET
2. SUMMARY OF QUANTITIES, SCHEDULE OF QUANTITIES AND TYPICAL SECTIONS
3. PLAN AND PROFILE
- 4-9. ROADWAY CROSS SECTIONS
10. GENERAL PLAN AND ELEVATION OF BRIDGE
11. DECK ELEVATIONS LAYOUT
12. DECK ELEVATIONS
13. SUPERSTRUCTURE
14. SUPERSTRUCTURE DETAILS
15. STRUCTURAL STEEL
16. STRUCTURAL STEEL DETAILS
17. ELASTOMERIC BEARINGS
18. SUBSTRUCTURE - ABUTMENTS
19. SUBSTRUCTURE DETAILS
20. PIER
21. STEEL BRIDGE RAIL SIDE MOUNTED
22. ANCHOR BOLT STANDARD
23. PILING DETAILS
24. EROSION & SEDIMENT CONTROL PLAN
- 25-30 EXISTING STRUCTURE PLANS

STANDARDS:

000001-05	STANDARD SYMBOLS, ABBREVIATIONS, & PATTERNS
280001-04	TEMPORARY EROSION CONTROL SYSTEMS
515001-02	NAME PLATE FOR BRIDGES
630301-04	SHOULDER WIDENING FOR TYPE 1 (SPECIAL) TRAFFIC BARRIER TERMINALS
701901	TRAFFIC CONTROL DEVICES
781001-02	TYPICAL PAVEMENT MARKINGS
BLR 21-7	TYPICAL APPLICATION OF TRAFFIC CONTROL DEVICES
BLR 26	STEEL PLATE BEAM GUARD RAIL 27 1/2" HEIGHT
BLR 27	TRAFFIC BARRIER TERMINAL, TYPE 5A



### LOCATION MAP

GROSS LENGTH OF SECTION = 1055 FEET (0.20 MILE)  
NET LENGTH OF SECTION = 1055 FEET (0.20 MILE)

SECTION 01-09114-00-BR  
BEGINS AT STA. 4+00

SECTION 01-09114-00-BR SN 019-4402

REMOVAL OF EXISTING:  
SUPERSTR - RC DECK ON STEEL I BEAMS WITH STEEL RAILING 24" WIDE X ±130" BK-BKABUTS.  
SUBSTR - RC ABUTS WITH CONCRETE WING WALLS ON TIMBER PILE SOLID RC PIERS ON TIMBER PILE. EXISTING PLANS MAY BE VIEWED AT THE DEKALB COUNTY HIGHWAY DEPARTMENT  
PROPOSED:  
RC DECK ON STEEL I BEAMS WITH CLOSED PILE BENT STEEL SHEETING ABUTMENTS AND WINGWALLS AND PILE BENT PIERS WITH SOLID RC ENCASEMENT.  
30' WIDE x ±135'-6" BK-BK

SECTION 01-09114-00-BR  
ENDS AT STA. 14+55

### DESIGN CRITERIA

ROADWAY	DESIGN CLASSIFICATION	ADT 2008	ADT 2028	DESIGN SPEED
NORTH GROVE ROAD	LOCAL ROAD	500	575	50

BLR RURAL 3R GUIDELINES



Scott A. Brown 7/10/08  
Exp. 11/30/2009

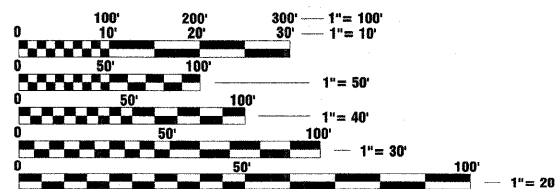
PLANS PREPARED BY:

**WENDLER ENGINEERING SERVICES**

DIXON, ILLINOIS  
SYCAMORE, ILLINOIS  
PRINCETON, ILLINOIS  
STERLING, ILLINOIS



LOCATION OF SECTION INDICATED THUS: - [black rectangle] -



FULL SIZE PLANS HAVE BEEN PREPARED USING STANDARD ENGINEERING SCALES. REDUCED SIZED PLANS WILL NOT CONFORM TO STANDARD SCALES. IN MAKING MEASUREMENTS ON REDUCED PLANS, THE ABOVE SCALES MAY BE USED.

J.U.L.I.E.  
JOINT UTILITY LOCATION INFORMATION FOR EXCAVATION  
1-800-892-0123

CONTRACT NO. 87364

STATE OF ILLINOIS  
DEPARTMENT OF TRANSPORTATION  
DIVISION OF HIGHWAYS

SUBMITTED July 8 20 08  
William J. M. COUNTY ENGINEER

SUBMITTED July 8 20 08  
Paul K. Kroll MAYFIELD ROAD DISTRICT

PASSED 7-22 20 08  
Kenneth L. Long DISTRICT 3 ENGINEER OF LOCAL ROADS & STREETS

RELEASED FOR BID BASED ON LIMITED REVIEW 7-22 20 08  
George F. Ryan DEPUTY DIRECTOR OF HIGHWAYS, REGION 2 ENGINEER

PRINTED BY THE AUTHORITY  
OF THE STATE OF ILLINOIS