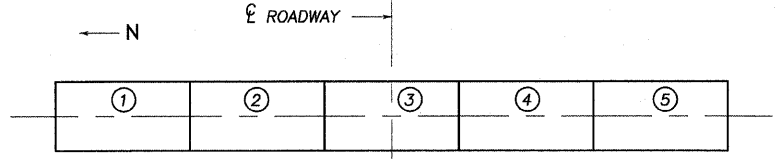


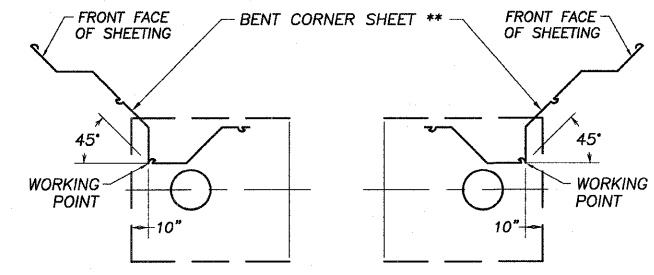
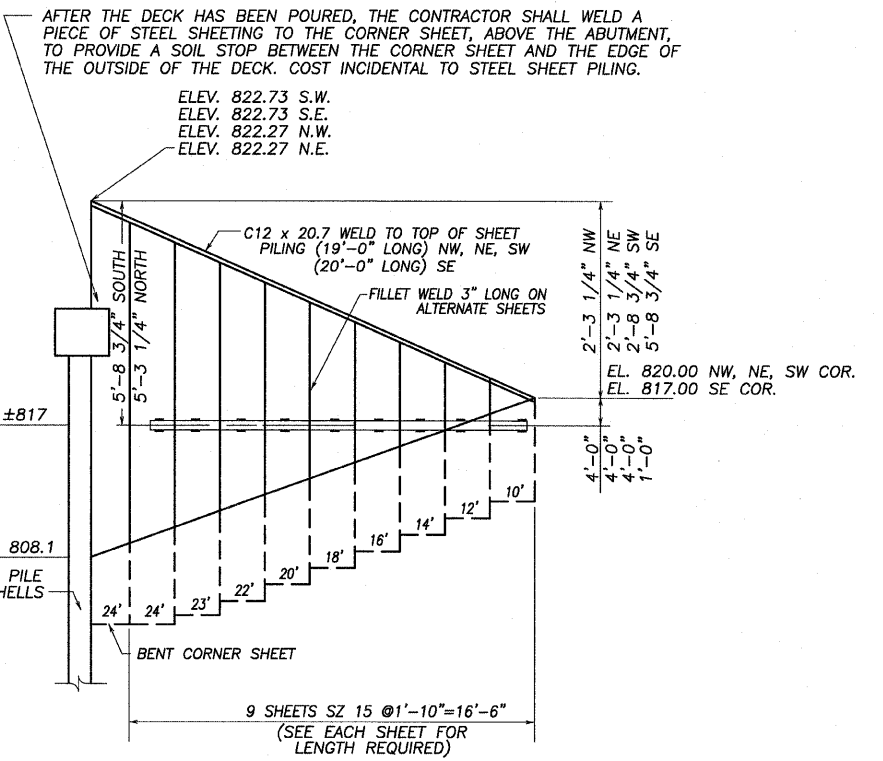
ELEVATION

ALL HORIZONTAL DIMENSIONS ARE ALONG CENTERLINE OF CAP
*FOR CAP ELEVATIONS, SEE TABLE BELOW



LOCATION	ELEV.	①	②	③	④	⑤
EAST ABUT.		819.037	819.134	819.232	819.330	819.427
WEST ABUT.		819.037	819.134	819.232	819.330	819.427

ELEVATION TOP OF ABUTMENT CAP



DETAIL "A"

DETAIL "B"

** AFTER THE CORNER SHEETS ARE DRIVEN TO GRADE AND BEFORE THE DECK IS FORMED, THE CONTRACTOR SHALL NOTCH THE BENT CORNER SHEET TO FIT THE END OF DECK.

BILL OF MATERIAL - ABUTMENTS

BAR	NO.	SIZE	LENGTH	SHAPE	
p(E)	20	#7	30'-8"	—	
s ₁ (E)	16	#4	6'-10"	□	
u ₁ (E)	16	#6	11'-7"	□	
u ₂ (E)	136	#4	6'-0"	□	
CONCRETE STRUCTURES				CU. YD.	18.2
REINFORCEMENT BARS, EPOXY COATED				LBS.	2150
FURNISHING METAL SHELL PILES - 12"Ø				FOOT	316
DRIVING PILES				FOOT	316
TEST PILE METAL SHELL PILES - 12"Ø				EACH	2
STEEL SHEET PILING				SQ. FT.	2457
HARDWARE				LBS.	940

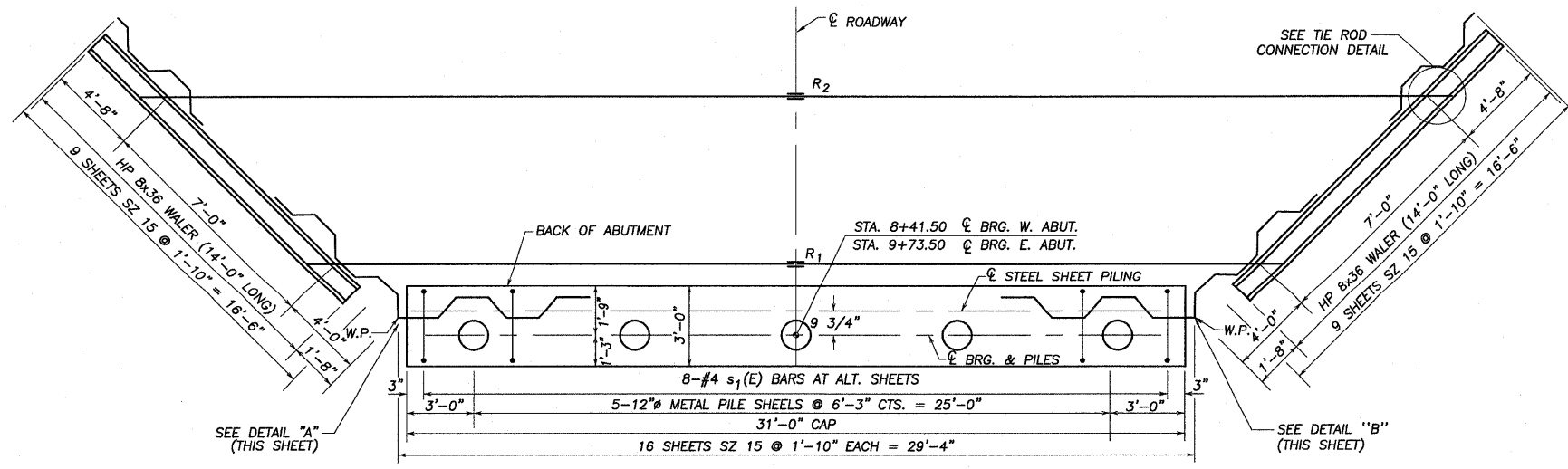
REINFORCEMENT BARS INDICATED (E) SHALL BE EPOXY COATED. WEIGHT OF WALERS & CHANNELS INCLUDED IN QUANTITY OF M270 GRADE 36. (SEE GENERAL NOTES BR. SHEET 1)

PILE DATA INFORMATION

TYPE AND SIZE: METAL SHELL 12" DIA. x 0.179 IN. WALLS
 NOMINAL REQUIRED BEARING: 204 KIPS
 ALLOWABLE RESISTANCE AVAILABLE: 68 KIPS

	WEST ABUTMENT	EAST ABUTMENT
NO. REQUIRED :	4+1 TEST PILE	4+1
EST. LENGTH:	39'	40'
MIN. PENETRATION	15' BELOW STREAMBED	
METAL SHELL PILES SHALL BE ACCORDING TO	ASTM A252 GRADE 3.	

THE TEST PILE SHALL BE DRIVEN TO 110 PERCENT OF THE NOMINAL REQUIRED BEARING INDICATED IN THE PILE DATA INFORMATION.



PLAN

SUBSTRUCTURE - ABUTMENTS
 SECTION 01-09114-00-BR
 NORTH GROVE ROAD
 DEKALB COUNTY
 S.N. 019-4409