

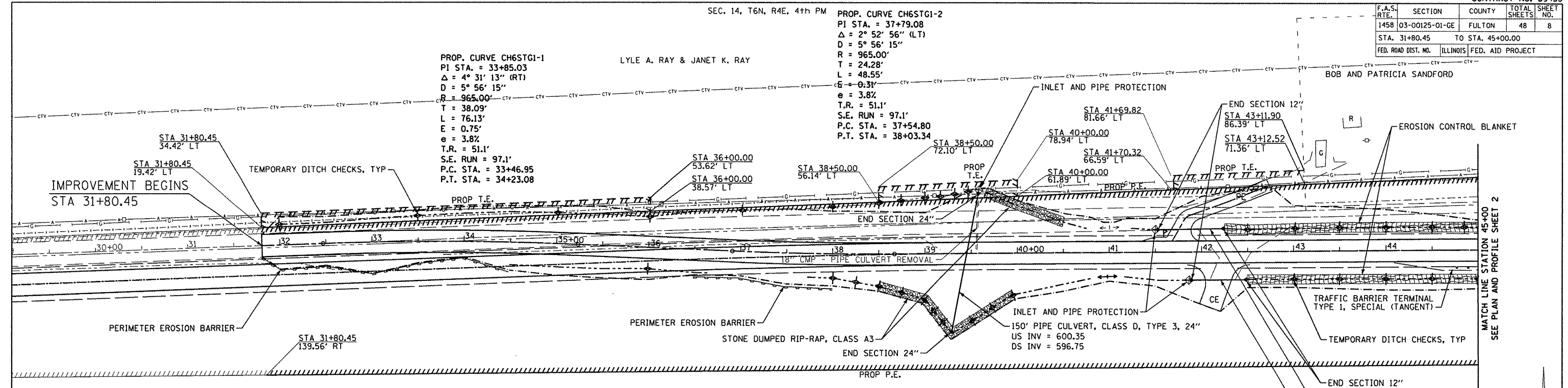
SEC. 14, T6N, R4E, 4th PM

F.A.S. RTE.	SECTION	COUNTY	TOTAL SHEETS	SHEET NO.
1458	03-00125-01-GE	FULTON	48	8
STA. 31+80.45		TO STA. 45+00.00		
FED. ROAD DIST. NO.		ILLINOIS		FED. AID PROJECT

PROP. CURVE CH6STG1-1
 PI STA. = 33+85.03
 $\Delta = 4^\circ 31' 13''$ (RT)
 $D = 5^\circ 56' 15''$
 $R = 965.00'$
 $T = 38.09'$
 $L = 76.13'$
 $E = 0.75'$
 $e = 3.8\%$
 $T.R. = 51.1'$
 $S.E. RUN = 97.1'$
 $P.C. STA. = 33+46.95$
 $P.T. STA. = 34+23.08$

PROP. CURVE CH6STG1-2
 PI STA. = 37+79.08
 $\Delta = 2^\circ 52' 56''$ (LT)
 $D = 5^\circ 56' 15''$
 $R = 965.00'$
 $T = 24.28'$
 $L = 48.55'$
 $E = 0.31'$
 $e = 3.8\%$
 $T.R. = 51.1'$
 $S.E. RUN = 97.1'$
 $P.C. STA. = 37+54.80$
 $P.T. STA. = 38+03.34$

LYLE A. RAY & JANET K. RAY



LEGEND		EROSION CONTROL	
	PROP PERMANENT EASEMENT (PE)		TEMPORARY DITCH CHECK
	PROP TEMPORARY EASEMENT (TE)		PIPE AND INLET PROTECTION
	PERIMETER EROSION BARRIER		EROSION CONTROL BLANKET
	LIMITS OF CONSTRUCTION		STONE DUMPED RIP-RAP
	PROPOSED DITCH LINE		DITCH SUMMIT
	SECTION LINE		AERIAL ELECTRIC/CABLE (AE)
	UNDERGROUND CABLE/TV		GAS & FIBER OPTIC (G&FO)

