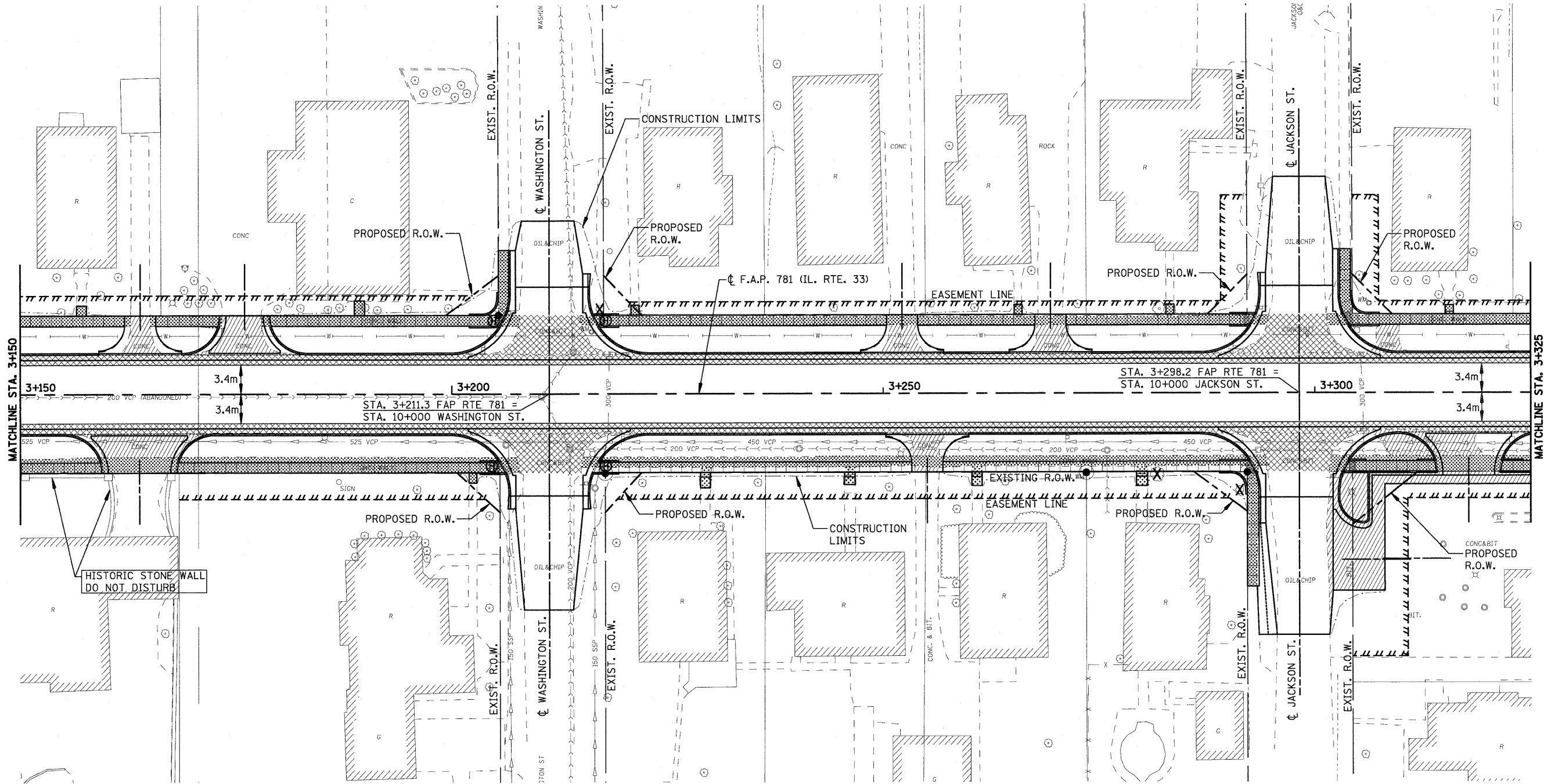
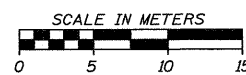


F.A.P. RTE.	SECTION	COUNTY	TOTAL SHEETS	SHEET NO.
781	1YRS, 2ZRS-1	CRAWFORD	378	51
STA. 3+150		TO STA. 3+325		
FED. ROAD DIST. NO.		ILLINOIS	FED. AID PROJECT	



**LEGEND**

- DRIVEWAY PAVEMENT REMOVAL (INCLUDES ALL MATERIAL ENCOUNTERED)
- PAVEMENT REMOVAL (INCLUDES ALL MATERIAL ENCOUNTERED)
- SIDEWALK REMOVAL (INCLUDES STEPS)



REVISIONS		ILLINOIS DEPARTMENT OF TRANSPORTATION
NAME	DATE	
		<b>REMOVAL ITEMS</b>  SCALE DATE APRIL 18, 2008  DRAWN BY EDW CHECKED BY RGH

PLOT DATE = 4/18/2008  
 FILE NAME = H:\14428\700651\_REK258\_B4.dgn

H. M. & G. NO. 4420