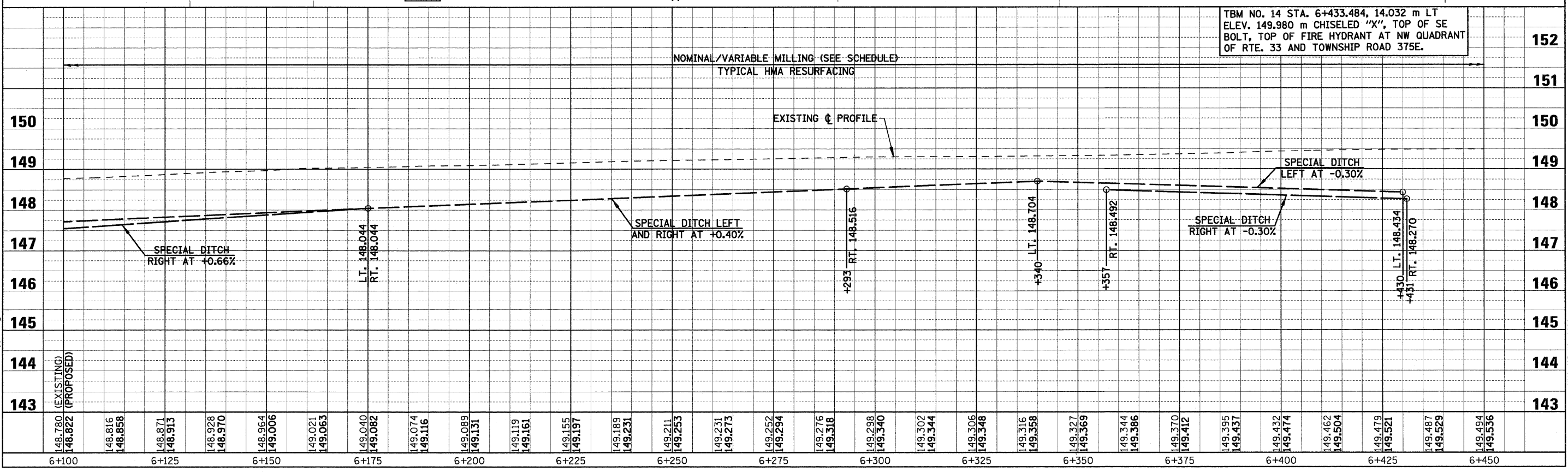
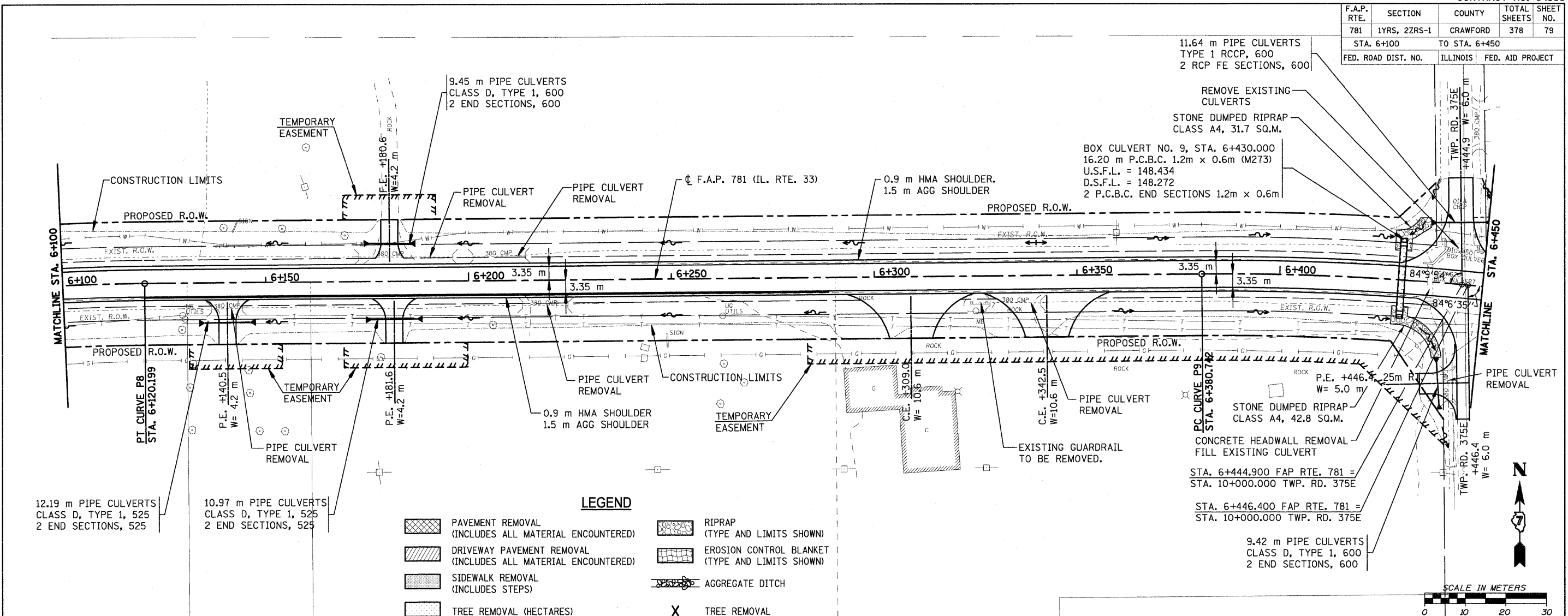


F.A.P. RTE.	SECTION	COUNTY	TOTAL SHEETS	SHEET NO.
781	1YRS, 2ZRS-1	CRAWFORD	378	79
STA. 6+100 TO STA. 6+450				
FED. ROAD DIST. NO.		ILLINOIS	FED. AID PROJECT	



TBM NO. 14 STA. 6+433.484, 14.032 m LT ELEV. 149.980 m CHISELED "X", TOP OF SE BOLT, TOP OF FIRE HYDRANT AT NW QUADRANT OF RTE. 33 AND TOWNSHIP ROAD 375E.

PLOT DATE = 4/19/2008  
FILE NAME = H:\4428\78079\_50pp\_13.dgn