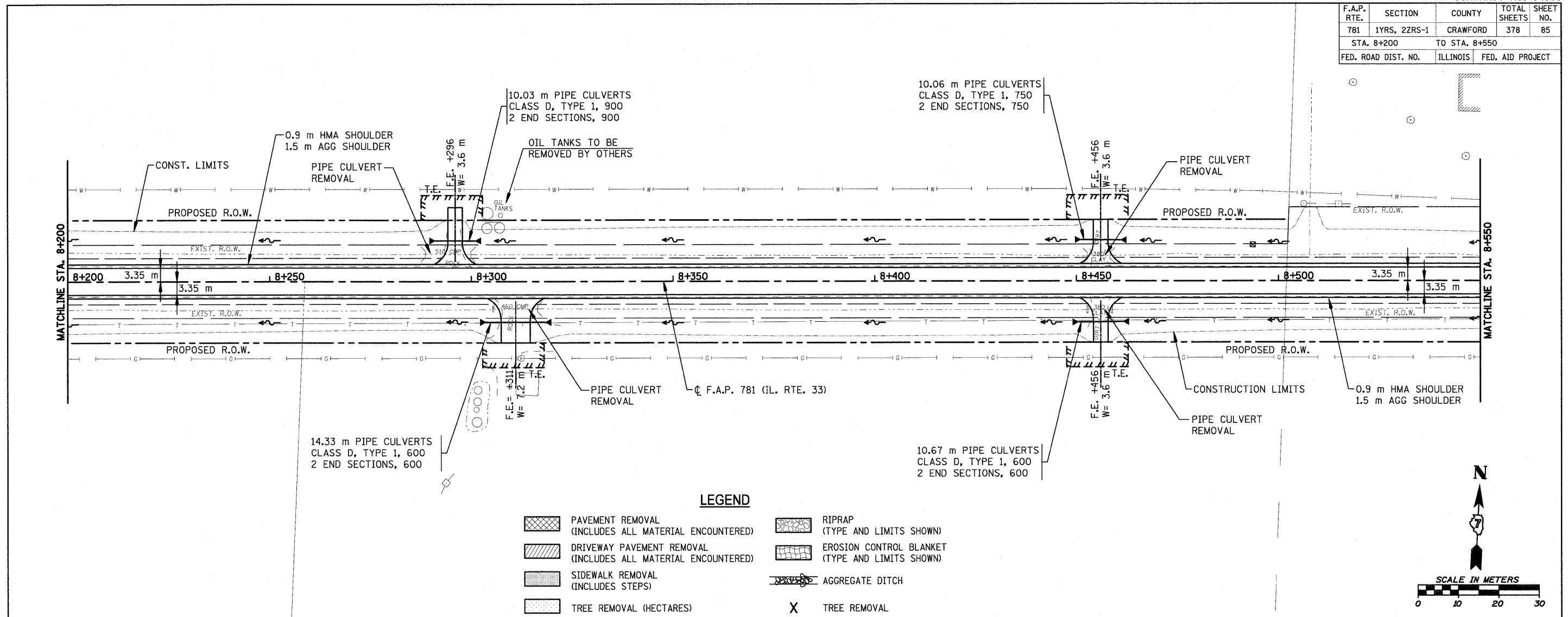
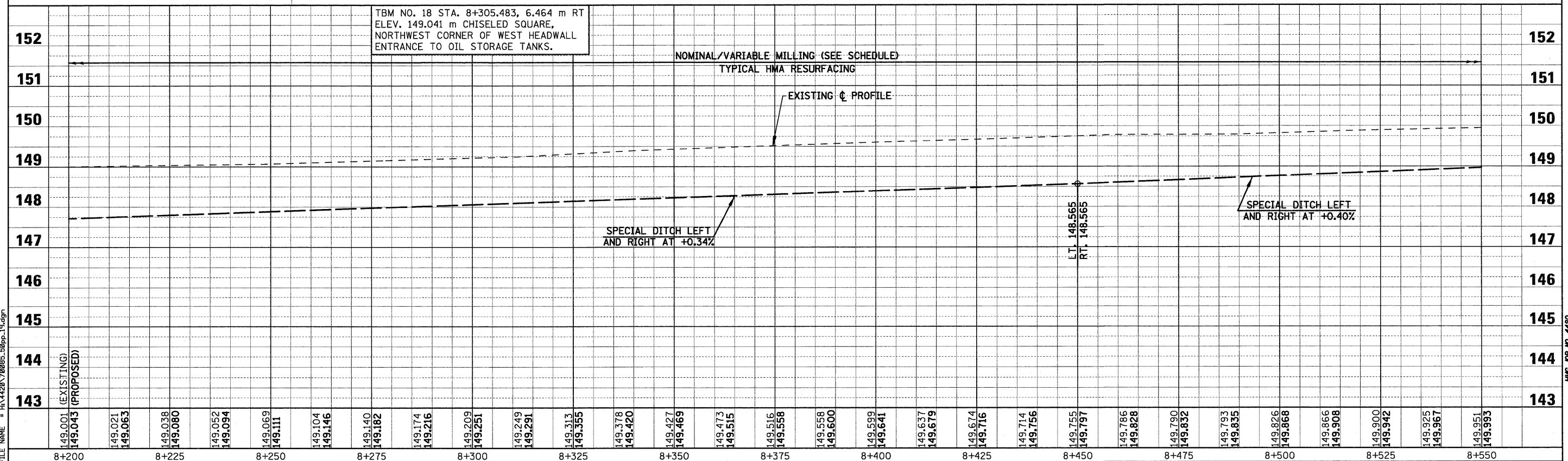
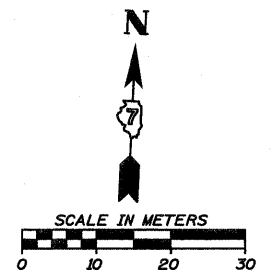


F.A.P. RTE.	SECTION	COUNTY	TOTAL SHEETS	SHEET NO.
781	1YRS, 2ZRS-1	CRAWFORD	378	85
STA. 8+200		TO STA. 8+550		
FED. ROAD DIST. NO.		ILLINOIS	FED. AID PROJECT	



**LEGEND**

- PAVEMENT REMOVAL (INCLUDES ALL MATERIAL ENCOUNTERED)
- DRIVEWAY PAVEMENT REMOVAL (INCLUDES ALL MATERIAL ENCOUNTERED)
- SIDEWALK REMOVAL (INCLUDES STEPS)
- TREE REMOVAL (HECTARES)
- RIPRAP (TYPE AND LIMITS SHOWN)
- EROSION CONTROL BLANKET (TYPE AND LIMITS SHOWN)
- AGGREGATE DITCH
- TREE REMOVAL



TBM NO. 18 STA. 8+305.483, 6.464 m RT  
ELEV. 149.041 m CHISELED SQUARE,  
NORTHWEST CORNER OF WEST HEADWALL  
ENTRANCE TO OIL STORAGE TANKS.

PLOT DATE = 4/18/2008  
FILE NAME = H:\420\70085.50pp.19.dgn