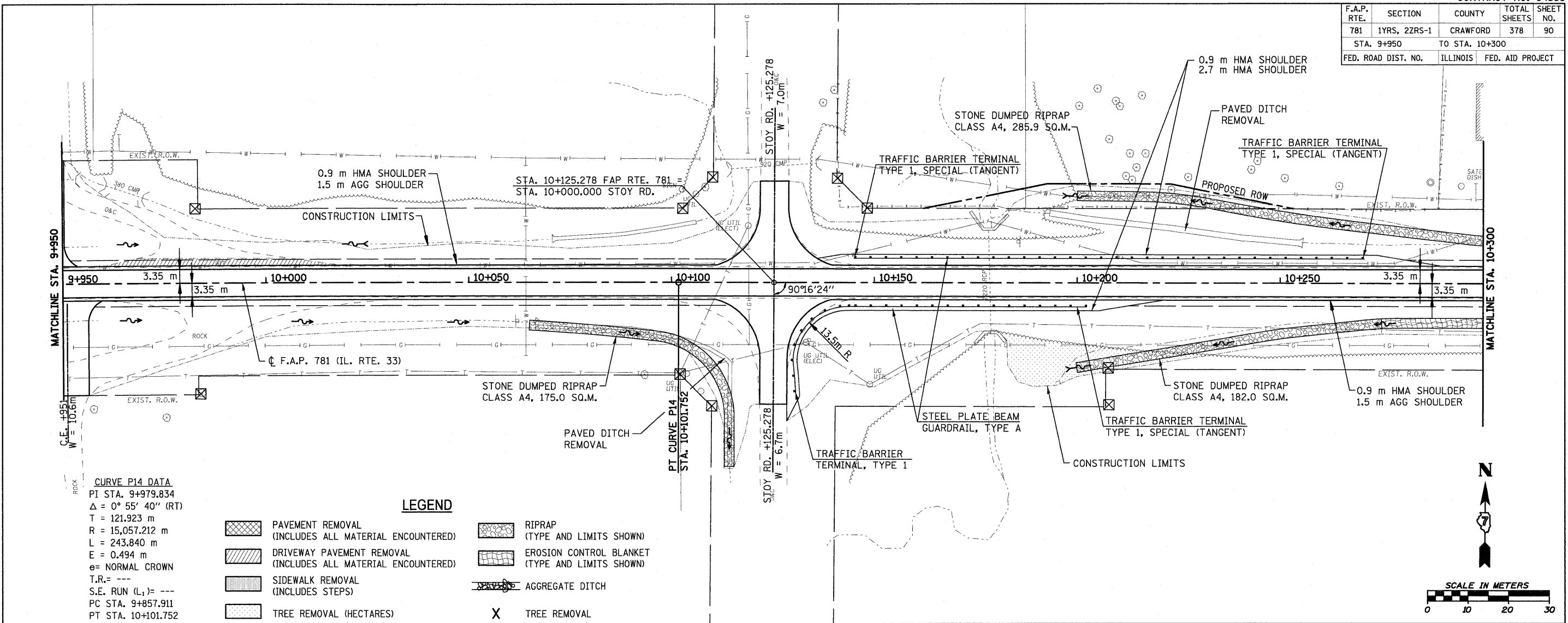


F.A.P. RTE.	SECTION	COUNTY	TOTAL SHEETS	SHEET NO.
781	1YRS, 2ZRS-1	CRAWFORD	378	90
STA. 9+950		TO STA. 10+300		
FED. ROAD DIST. NO.		ILLINOIS	FED. AID PROJECT	



CURVE P14 DATA
 PI STA. 9+979.834
 $\Delta = 0^\circ 55' 40''$ (RT)
 T = 121.923 m
 R = 15,057.212 m
 L = 243.840 m
 E = 0.494 m
 e = NORMAL CROWN
 T.R. = ---
 S.E. RUN (L.) = ---
 PC STA. 9+857.911
 PT STA. 10+101.752

- LEGEND**
- PAVEMENT REMOVAL (INCLUDES ALL MATERIAL ENCOUNTERED)
 - DRIVEWAY PAVEMENT REMOVAL (INCLUDES ALL MATERIAL ENCOUNTERED)
 - SIDEWALK REMOVAL (INCLUDES STEPS)
 - TREE REMOVAL (HECTARES)
 - RIPRAP (TYPE AND LIMITS SHOWN)
 - EROSION CONTROL BLANKET (TYPE AND LIMITS SHOWN)
 - AGGREGATE DITCH
 - TREE REMOVAL

