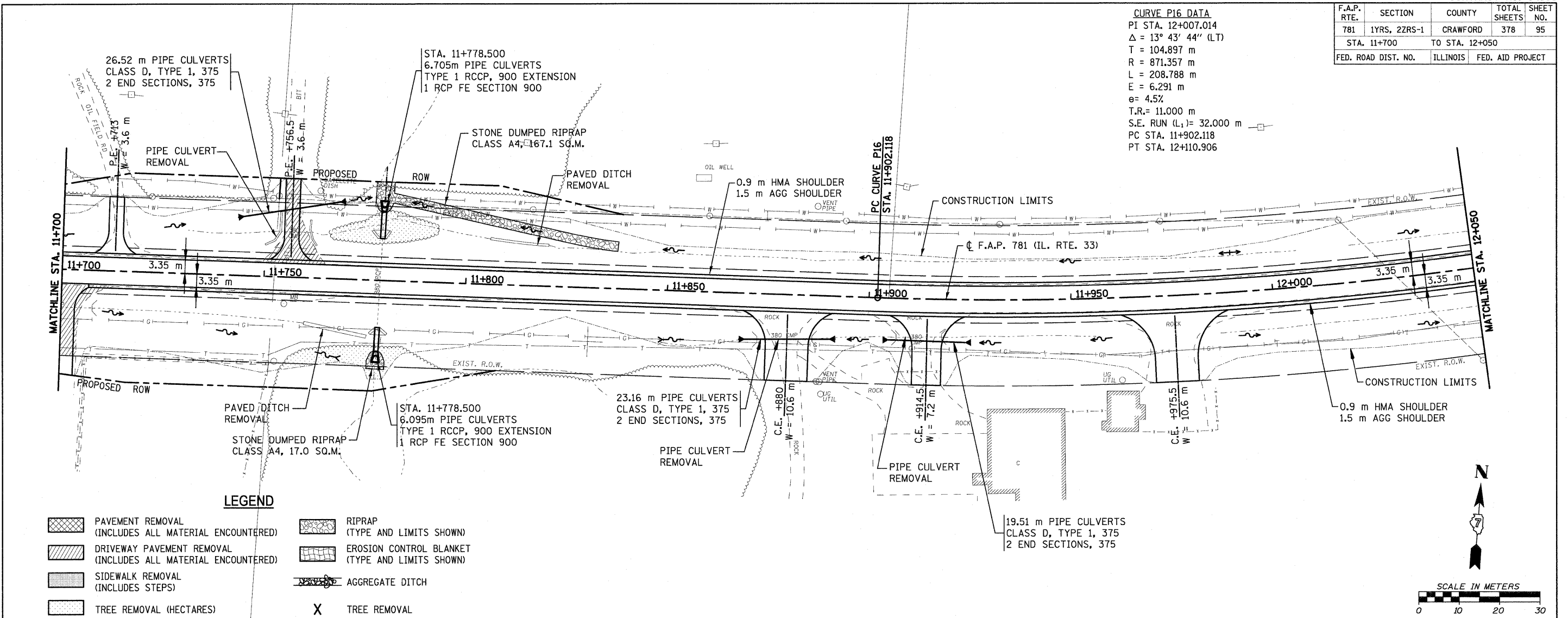


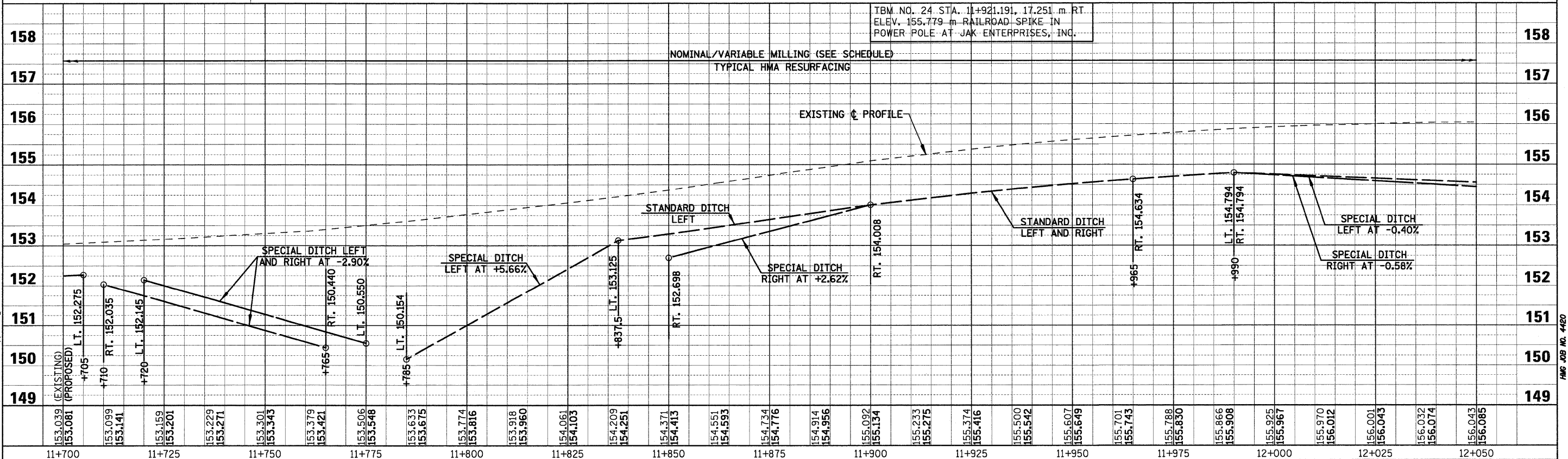
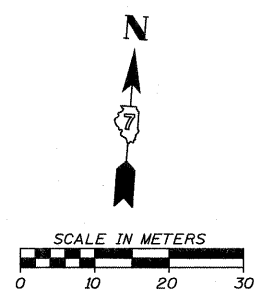
F.A.P. RTE.	SECTION	COUNTY	TOTAL SHEETS	SHEET NO.
781	1YRS, 2ZRS-1	CRAWFORD	378	95
STA. 11+700		TO STA. 12+050		
FED. ROAD DIST. NO.		ILLINOIS FED. AID PROJECT		

CURVE P16 DATA
 PI STA. 12+007.014
 $\Delta = 13^\circ 43' 44''$ (LT)
 T = 104.897 m
 R = 871.357 m
 L = 208.788 m
 E = 6.291 m
 e = 4.5%
 T.R. = 11.000 m
 S.E. RUN (L₁) = 32.000 m
 PC STA. 11+902.118
 PT STA. 12+110.906



LEGEND

	PAVEMENT REMOVAL (INCLUDES ALL MATERIAL ENCOUNTERED)		RIPRAP (TYPE AND LIMITS SHOWN)
	DRIVEWAY PAVEMENT REMOVAL (INCLUDES ALL MATERIAL ENCOUNTERED)		EROSION CONTROL BLANKET (TYPE AND LIMITS SHOWN)
	SIDEWALK REMOVAL (INCLUDES STEPS)		AGGREGATE DITCH
	TREE REMOVAL (HECTARES)		TREE REMOVAL



PLOT DATE = 4/19/2008
 FILE NAME = H:\14428\70095_50pp_29.dgn