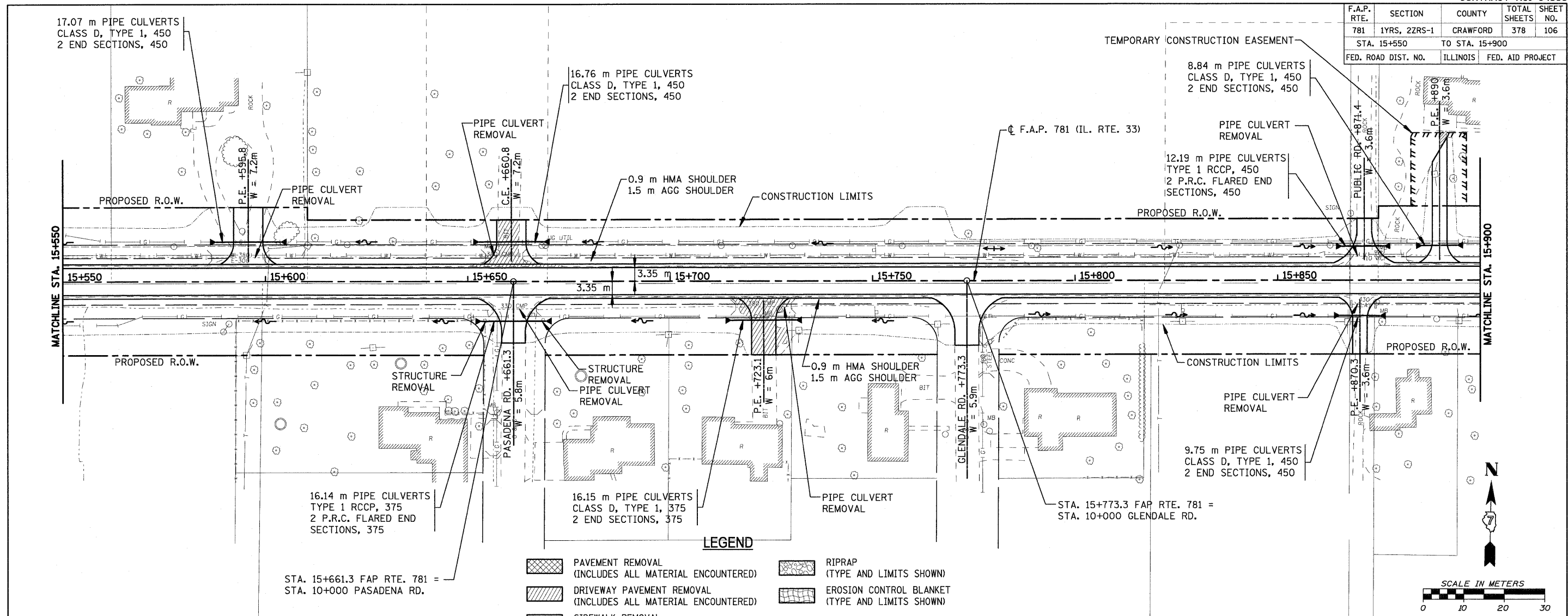


F.A.P. RTE.	SECTION	COUNTY	TOTAL SHEETS	SHEET NO.
781	1YRS, 2ZRS-1	CRAWFORD	378	106
STA. 15+550		TO STA. 15+900		
FED. ROAD DIST. NO.		ILLINOIS	FED. AID PROJECT	



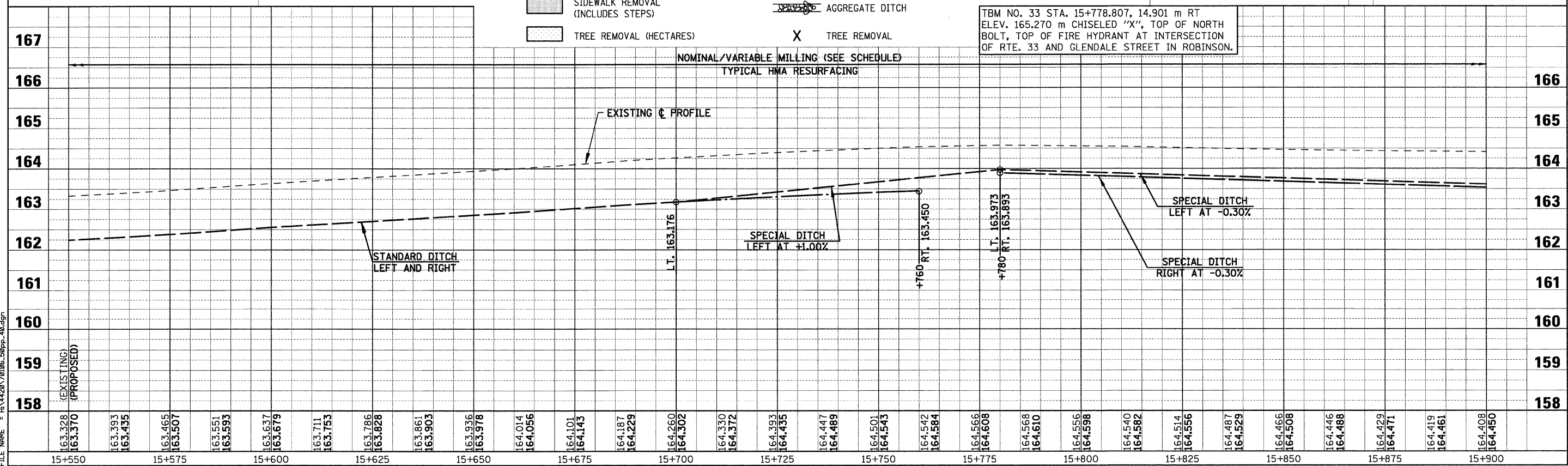
STA. 15+661.3 FAP RTE. 781 =  
STA. 10+000 PASADENA RD.

STA. 15+773.3 FAP RTE. 781 =  
STA. 10+000 GLENDALE RD.

- LEGEND**
- PAVEMENT REMOVAL (INCLUDES ALL MATERIAL ENCOUNTERED)
  - DRIVEWAY PAVEMENT REMOVAL (INCLUDES ALL MATERIAL ENCOUNTERED)
  - SIDEWALK REMOVAL (INCLUDES STEPS)
  - TREE REMOVAL (HECTARES)
  - RIPRAP (TYPE AND LIMITS SHOWN)
  - EROSION CONTROL BLANKET (TYPE AND LIMITS SHOWN)
  - AGGREGATE DITCH
  - TREE REMOVAL



TBM NO. 33 STA. 15+778.807, 14.901 m RT  
ELEV. 165.270 m CHISELED "X", TOP OF NORTH  
BOLT, TOP OF FIRE HYDRANT AT INTERSECTION  
OF RTE. 33 AND GLENDALE STREET IN ROBINSON.



PLOT DATE = 4/19/2009  
FILE NAME = H:\4428\78106\_50pp\_40.dgn