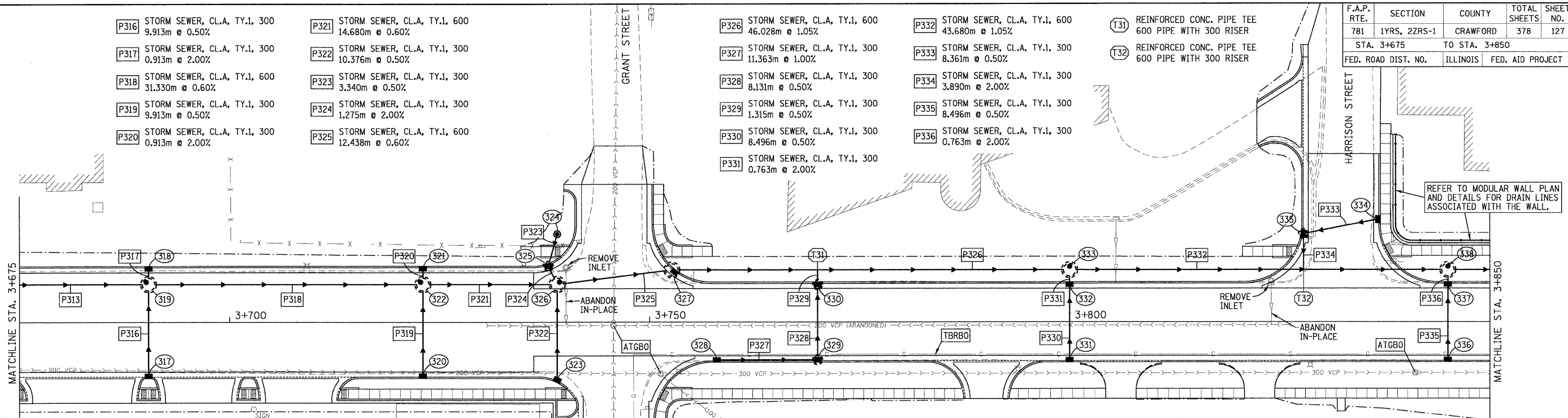
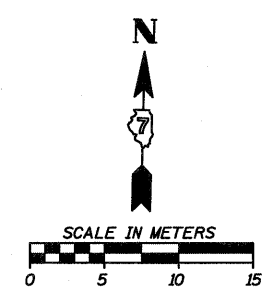
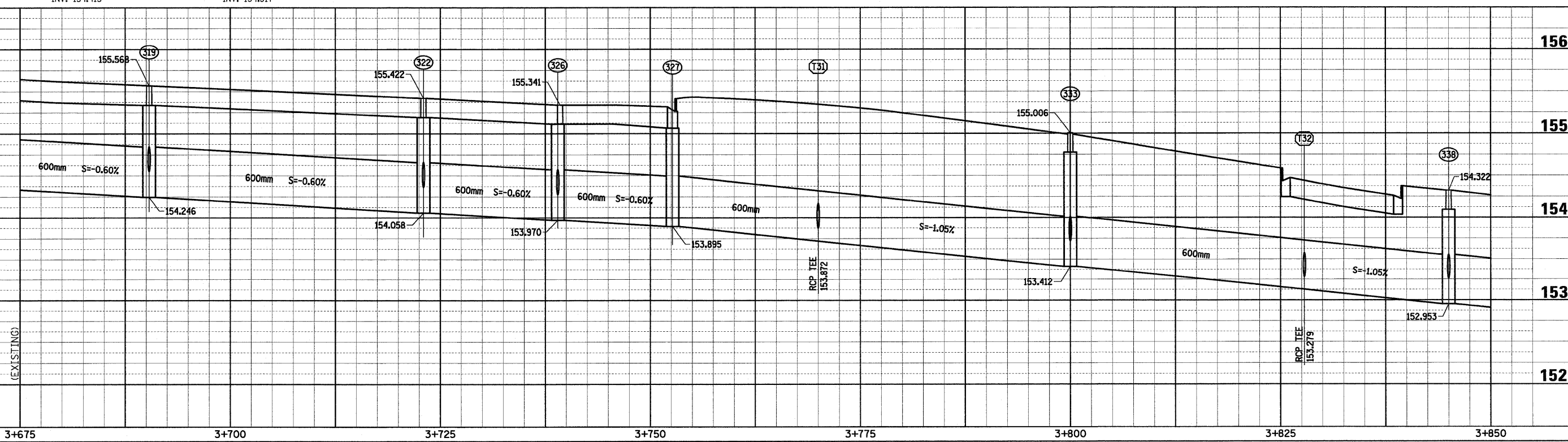


F.A.P. RTE.	SECTION	COUNTY	TOTAL SHEETS	SHEET NO.
781	1YRS, 2ZRS-1	CRAWFORD	378	127
STA. 3+675		TO STA. 3+850		
FED. ROAD DIST. NO.		ILLINOIS	FED. AID PROJECT	



- P316** STORM SEWER, CL.A, TY.1, 300 9.913m @ 0.50%
- P317** STORM SEWER, CL.A, TY.1, 300 0.913m @ 2.00%
- P318** STORM SEWER, CL.A, TY.1, 600 31.330m @ 0.60%
- P319** STORM SEWER, CL.A, TY.1, 300 9.913m @ 0.50%
- P320** STORM SEWER, CL.A, TY.1, 300 0.913m @ 2.00%
- P321** STORM SEWER, CL.A, TY.1, 600 14.680m @ 0.60%
- P322** STORM SEWER, CL.A, TY.1, 300 10.376m @ 0.50%
- P323** STORM SEWER, CL.A, TY.1, 300 3.340m @ 0.50%
- P324** STORM SEWER, CL.A, TY.1, 300 1.275m @ 2.00%
- P325** STORM SEWER, CL.A, TY.1, 600 12.438m @ 0.60%
- P326** STORM SEWER, CL.A, TY.1, 600 46.028m @ 1.05%
- P327** STORM SEWER, CL.A, TY.1, 300 11.363m @ 1.00%
- P328** STORM SEWER, CL.A, TY.1, 300 8.131m @ 0.50%
- P329** STORM SEWER, CL.A, TY.1, 300 1.315m @ 0.50%
- P330** STORM SEWER, CL.A, TY.1, 300 8.496m @ 0.50%
- P331** STORM SEWER, CL.A, TY.1, 300 0.763m @ 2.00%
- P332** STORM SEWER, CL.A, TY.1, 600 43.680m @ 1.05%
- P333** STORM SEWER, CL.A, TY.1, 300 8.361m @ 0.50%
- P334** STORM SEWER, CL.A, TY.1, 300 3.890m @ 2.00%
- P335** STORM SEWER, CL.A, TY.1, 300 8.496m @ 0.50%
- P336** STORM SEWER, CL.A, TY.1, 300 0.763m @ 2.00%
- (T31)** REINFORCED CONC. PIPE TEE 600 PIPE WITH 300 RISER
- (T32)** REINFORCED CONC. PIPE TEE 600 PIPE WITH 300 RISER



Sheet: 7
 Angle: 1.3348
 Chain: P_IL33

PLT DATE = 3/20/2009
 FILE NAME = H:\4428\78127_ss_07.dgn

HMG JOB NO. 4460