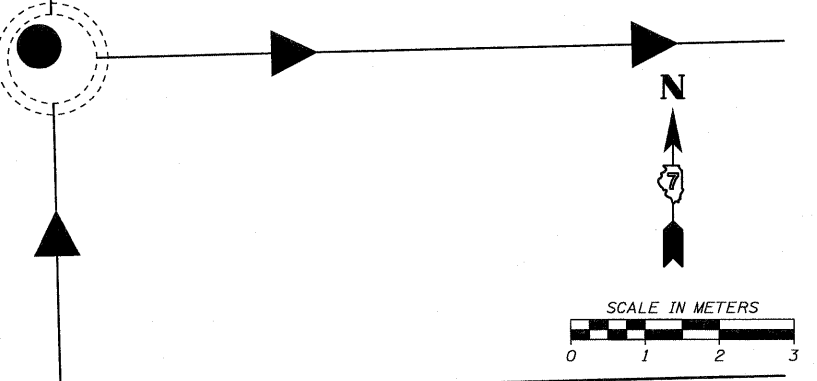
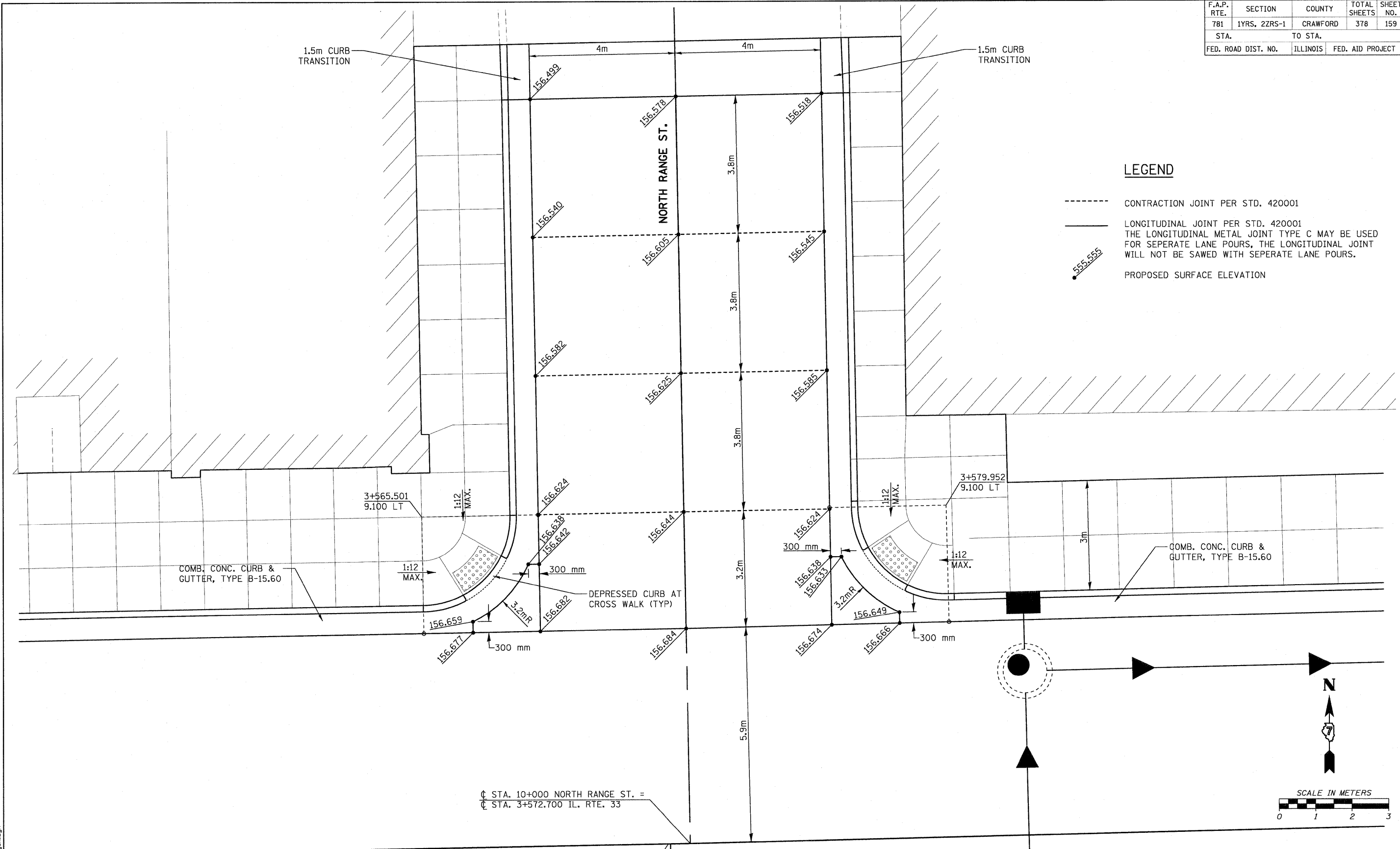


F.A.P. RTE.	SECTION	COUNTY	TOTAL SHEETS	SHEET NO.
781	1YRS, 2ZRS-1	CRAWFORD	378	159
STA.		TO STA.		
FED. ROAD DIST. NO.		ILLINOIS	FED. AID PROJECT	

**LEGEND**

- CONTRACTION JOINT PER STD. 420001
- LONGITUDINAL JOINT PER STD. 420001  
THE LONGITUDINAL METAL JOINT TYPE C MAY BE USED FOR SEPERATE LANE POURS, THE LONGITUDINAL JOINT WILL NOT BE SAWED WITH SEPERATE LANE POURS.
- 555.555 PROPOSED SURFACE ELEVATION



REVISIONS		ILLINOIS DEPARTMENT OF TRANSPORTATION
NAME	DATE	
		<b>INTERSECTION DETAIL NORTH RANGE STREET</b>  SCALE AS SHOWN      DRAWN BY EDW DATE MARCH 20, 2008      CHECKED BY RGH

PLOT DATE = 3/20/2008  
 FILE NAME = H:\4428\78159\_int\_Range.dgn

H. M. & G. NO. 4420