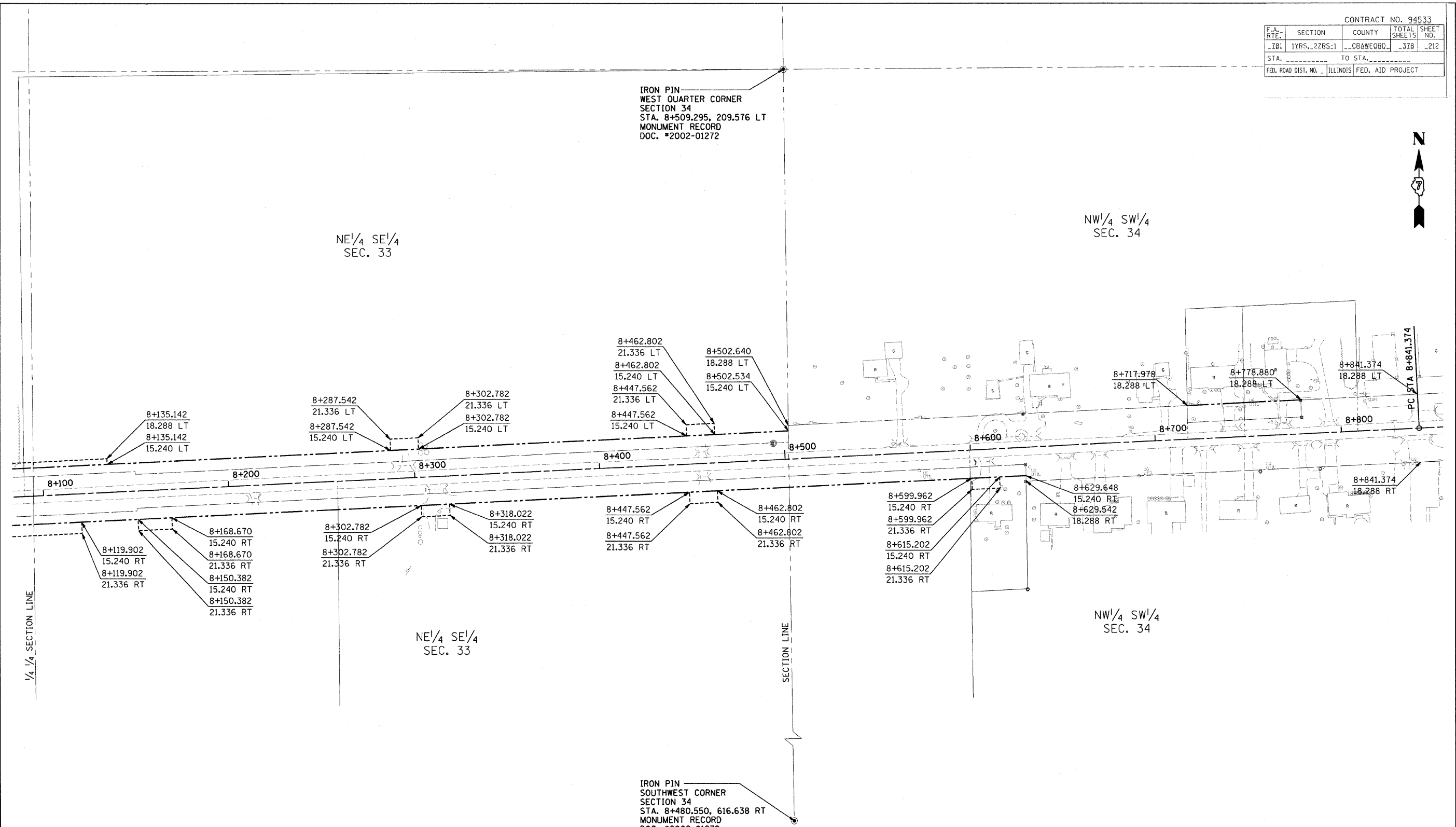


CONTRACT NO. 94533				
F.A. RTE.	SECTION	COUNTY	TOTAL SHEETS	SHEET NO.
-781	1YRS, 2ZRS-1	CRAWFORD	378	212
STA.	TO STA.			
FED. ROAD DIST. NO.	ILLINOIS	FED. AID PROJECT		



FOR INFORMATION ONLY

THESE METRIC RIGHT-OF-WAY PLANS ARE FOR INFORMATION ONLY. THEY WERE DEVELOPED FROM THE OFFICIAL ENGLISH VERSION OF THE RIGHT-OF-WAY PLANS. STATIONING AND DIMENSIONS CONVERTED TO METRIC. FINAL RIGHT-OF-WAY SHALL BE DETERMINED BY THE ORIGINAL ENGLISH PLANS.

RIGHT OF WAY PLANS	
FAP ROUTE 781	
PROJECT	SECTION 1YRS, 2ZRS-1
STATION 8+090	TO
STATION 8+850	
COUNTY CRAWFORD	
SCALE 1:1000	SHEET 12 OF 22