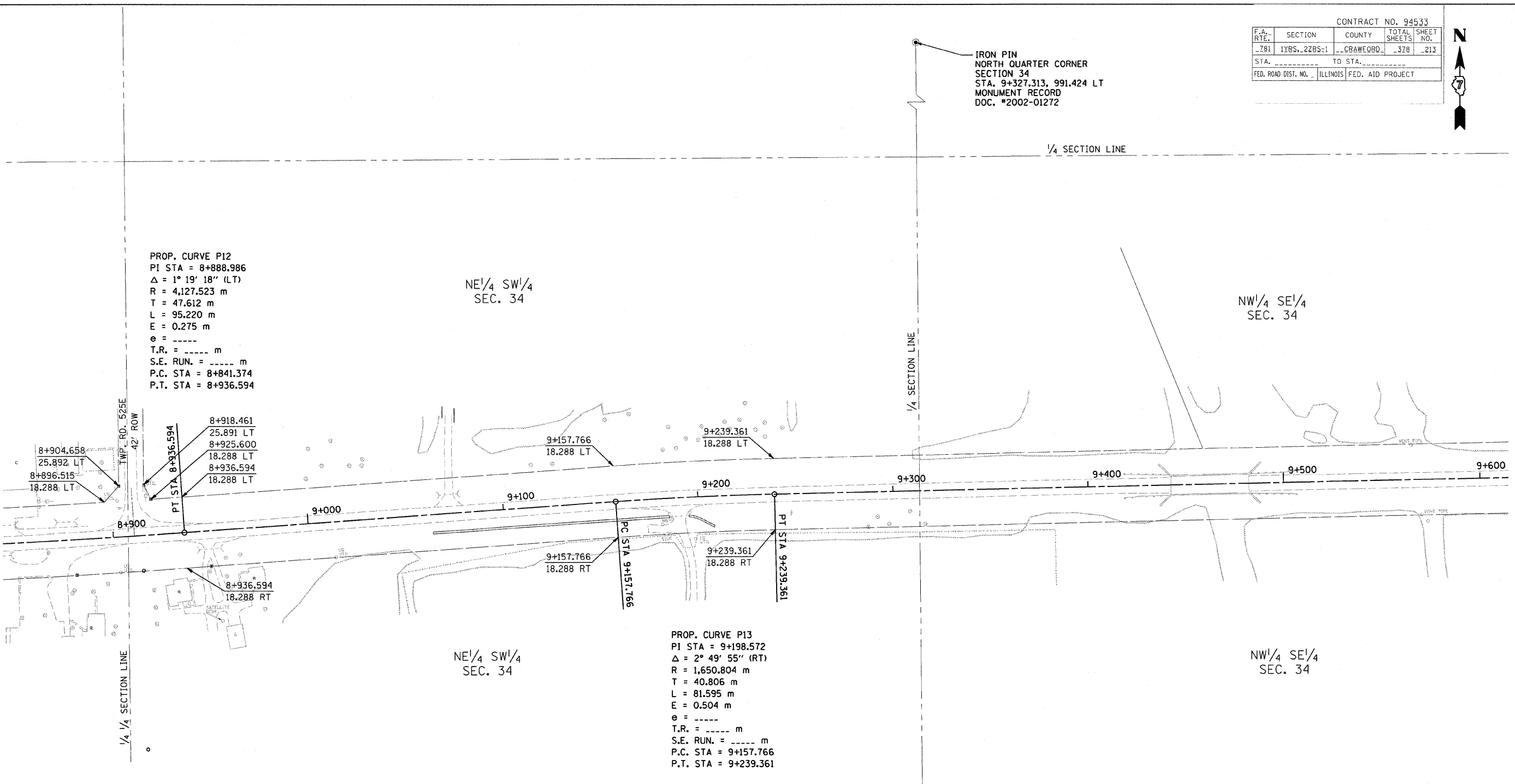


CONTRACT NO. 94533				
F.A. RTE.	SECTION	COUNTY	TOTAL SHEETS	SHEET NO.
781	1YRS..2ZRS-1	CRAWFORD	378	213
STA.		TO STA.		
FED. ROAD DIST. NO.		ILLINOIS FED. AID PROJECT		



IRON PIN  
NORTH QUARTER CORNER  
SECTION 34  
STA. 9+327.313, 991.424 LT  
MONUMENT RECORD  
DOC. \*2002-01272



PROP. CURVE P12  
PI STA = 8+888.986  
 $\Delta = 1^\circ 19' 18''$  (LT)  
R = 4,127.523 m  
T = 47.612 m  
L = 95.220 m  
E = 0.275 m  
e = -----  
T.R. = ----- m  
S.E. RUN. = ----- m  
P.C. STA = 8+841.374  
P.T. STA = 8+936.594

PROP. CURVE P13  
PI STA = 9+198.572  
 $\Delta = 2^\circ 49' 55''$  (RT)  
R = 1,650.804 m  
T = 40.806 m  
L = 81.595 m  
E = 0.504 m  
e = -----  
T.R. = ----- m  
S.E. RUN. = ----- m  
P.C. STA = 9+157.766  
P.T. STA = 9+239.361

**FOR INFORMATION ONLY**

THESE METRIC RIGHT-OF-WAY PLANS ARE FOR INFORMATION ONLY. THEY WERE DEVELOPED FROM THE OFFICIAL ENGLISH VERSION OF THE RIGHT-OF-WAY PLANS. STATIONING AND DIMENSIONS CONVERTED TO METRIC. FINAL RIGHT-OF-WAY SHALL BE DETERMINED BY THE ORIGINAL ENGLISH PLANS.

IRON PIN  
SOUTH QUARTER CORNER  
SECTION 34  
STA. 9+304.903, 649.725 RT  
MONUMENT RECORD  
DOC. \*2002-01272

RIGHT OF WAY PLANS FAP ROUTE 781	
PROJECT	SECTION 1YRS, 2ZRS-1
STATION 8+850	TO
STATION 9+610	
COUNTY CRAWFORD	
SCALE 1:1000	SHEET 13 OF 22