

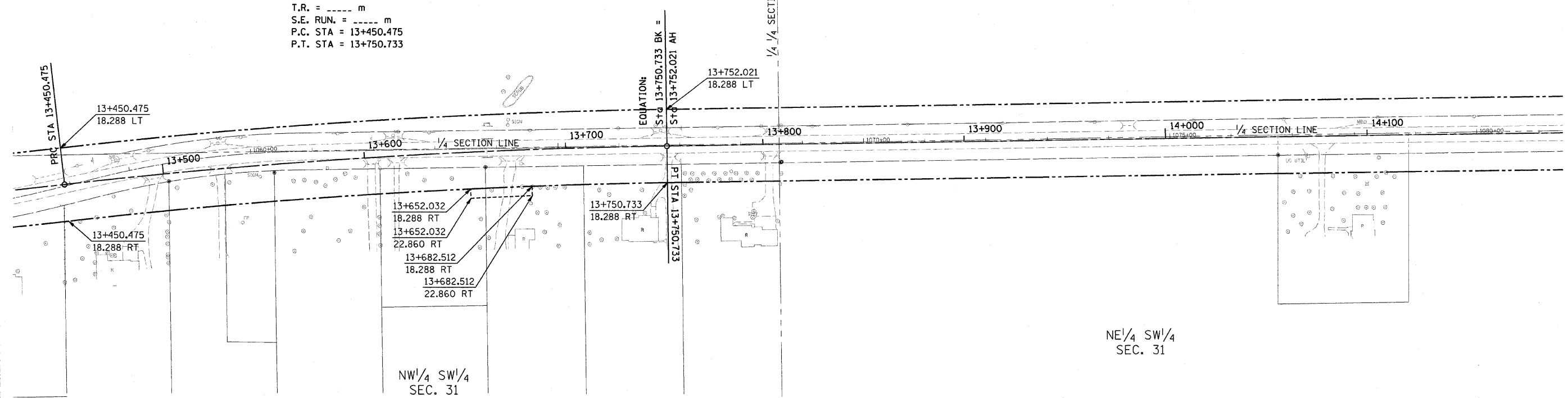
CONTRACT NO. 94533			
F.A. RTE.	SECTION	COUNTY	TOTAL SHEET NO.
781	1YRS-2ZRS-1	CRAWFORD	378 219
STA.	TO STA.		
FED. ROAD DIST. NO.	ILLINOIS FED. AID PROJECT		



PROP. CURVE P19
 PI STA = 13+600.724
 $\Delta = 5^\circ 36' 40''$ (RT)
 R = 3,066.000 m
 T = 150.249 m
 L = 300.258 m
 E = 3.679 m
 $e =$ -----
 T.R. = ----- m
 S.E. RUN. = ----- m
 P.C. STA = 13+450.475
 P.T. STA = 13+750.733

SW¹/₄ NW¹/₄
 SEC. 31

SE¹/₄ NW¹/₄
 SEC. 31



FOR INFORMATION ONLY

THESE METRIC RIGHT-OF-WAY PLANS ARE FOR INFORMATION ONLY. THEY WERE DEVELOPED FROM THE OFFICIAL ENGLISH VERSION OF THE RIGHT-OF-WAY PLANS. STATIONING AND DIMENSIONS CONVERTED TO METRIC. FINAL RIGHT-OF-WAY SHALL BE DETERMINED BY THE ORIGINAL ENGLISH PLANS.

RIGHT OF WAY PLANS
 FAP ROUTE 781
 PROJECT SECTION 1YRS, 2ZRS-1
 STATION 13+430 TO
 STATION 14+195
 COUNTY CRAWFORD
 SCALE 1:1000 SHEET 19 OF 22