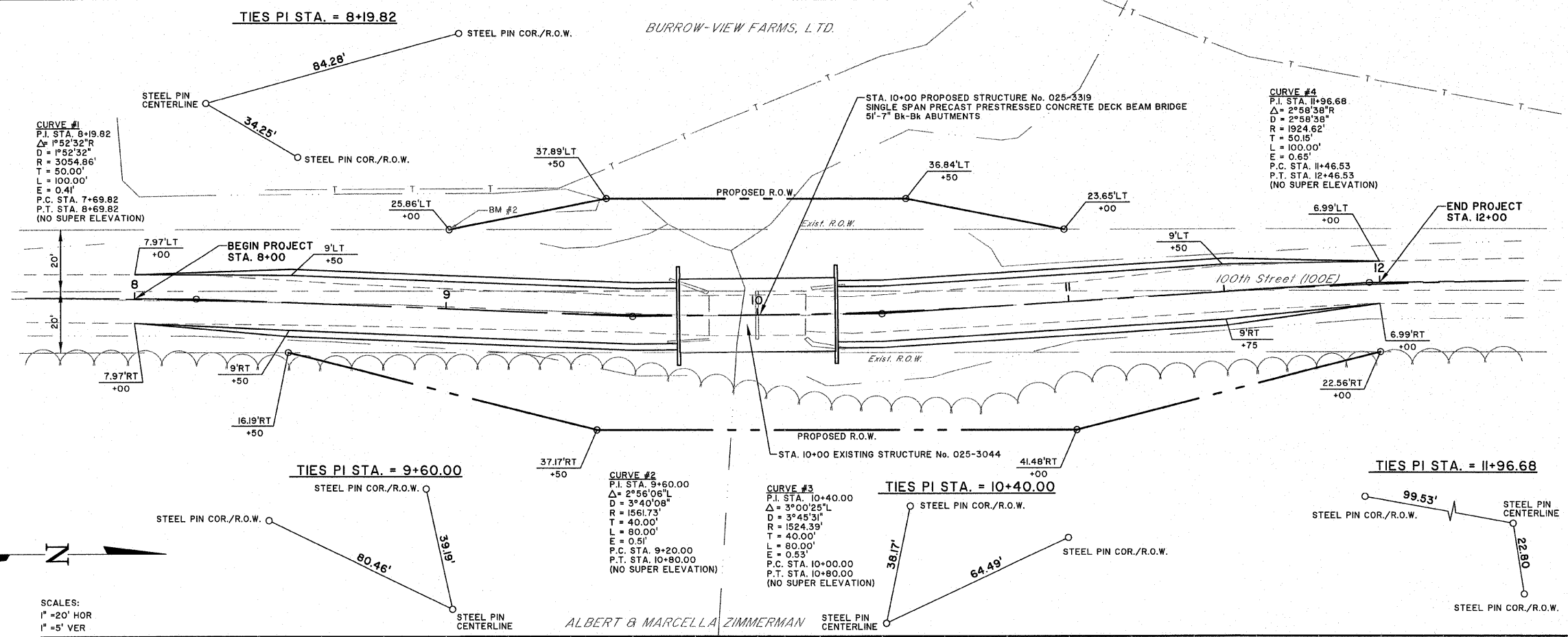


ROUTE NO.	SECTION	COUNTY	TOTAL SHEETS	SHEET NO.
S.B.I.	02-0810-00-BR	EFFINGHAM	14	3
F.A.				
FED. ROAD DIST. NO. 7	ILLINOIS	FED. AID PROJECT-	CONTRACT #95535	



**LEGEND**  
 UNDERGROUND TELEPHONE  
 TREE/BRUSH LINE

**NOTE:**  
 CONTRACTOR TO FIELD VERIFY BETWEEN BENCHMARKS ELEVATIONS

- BM #3**  
TOP OF RAILROAD SPIKE IN POWER POLE 135' ± NORTH OF CREEK ELEV=599.34
- BM #2**  
TOP OF IRON PIN AT STATION 9+00 25.86' LT ELEV. = 592.64
- BM #1**  
SE CORNER OF EXPOSED METAL ON TOP OF RETAINING WALL AT SE CORNER OF EXISTING BRIDGE. ELEV=595.14

**MILANO & GRUNLOH ENGINEERS, LLC**  
 14 WEST WASHINGTON  
 P.O. BOX 997  
 EFFINGHAM, ILLINOIS 62401  
 Phone: (217) 347-7262  
 (800) 677-2774  
 Fax #: (217) 342-3433  
 Web Address: www.mgeengineers.com  
 Design Firm #: 184-003108  
 File name: S:\DWG\03\03234\dwg\Road Plan.dwg  
 Plot date: 08/21/07 at 11:00 F.B. 558

**SCALES:**  
 1" = 20' HOR  
 1" = 5' VER

